

Camp Opened: 24 June 2011

Camp Phase: Set-up

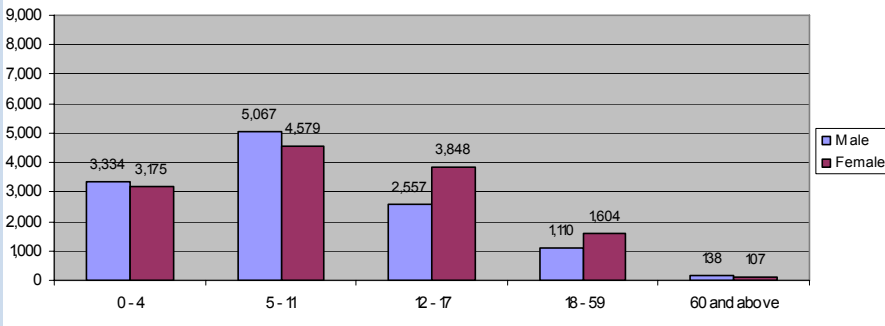
Refugee Population

25,519 as of 5 September 2011



Photo: Kobe refugee camp © UNHCR / Aug 2011

Figure 1: Population breakdown by age-group



Geographic Snapshot

GPS Coordinates longitude: 41.755960
latitude: 4.481250

Size of Camp Area 235 Hectares

Number of Sector Divisions 3

Number of Blocks 35

Number of Communities 302.5

Number of Family Plots 4,840

Average Plot Size per Household 180 m²
(10mx18m)

Distance from International Border 62 km

Contextual Background

- Pattern in Population Change**
 - Organized large-scale relocation from the Transit Centre began 24 June 2011 and ended 16 July 2011, during which time the camp grew rapidly.
- Areas of Origin**
 - 59% of residents are from Bay; 24% are from Geddo; remaining are from various areas
- Cultural Background**
 - Sunni Muslim
 - Majority (80%) are May May speakers from Rahanweyn clan and 12% are Mahatiri speakers from Marehan clan; remaining are from various other Somali clans
- Main Occupations**
 - Pastoralists (livestock herding: goats, camels, cows, sheep and donkeys)

Tips for Humanitarians

- UNHCR provides protection and monitors delivery of services to all refugees in Kobe.
- Camp Management is done **by ARRA with support from UNHCR**.
- Camp Coordination Meetings**, co-chaired by ARRA and UNHCR, are held weekly in Kobe Camp with humanitarian actors.
- All refugees in Kobe Camp are **individually registered** in UNHCR's proGres database and hold **ration cards**. Ration card numbers are useful for referral between partners and for distribution events. By end 2011, refugees will have been given a **Proof of Registration** document showing family-related and individual details, including **each person's photo**.
- Biometrics (fingerprinting)** has been used for registering refugees living in Kobe. Biometrics assists in preventing double registration. No refugee household should have more than one ration card.
- Thousands of children with severe acute malnutrition (SAM) under 5 have been enrolled in nutrition programmes. **Each malnourished child has a unique Out-patient Therapeutic Programme card**.

Administrative Structure

Role of Ethiopian Government in Kobe

- ARRA is active in the following sectors:**
 - Registration
 - Food Distribution
 - Camp Management
 - NFI Distribution
 - Camp Security
- ARRA staff posted inside the camp include:**
 - Camp Coordinator
 - Sanitation Specialist
 - Protection Officer
 - Distribution Staff
 - Site Planner

Role of Camp Residents in Self-Management

- Refugee Central Committee (RCC)** – is a resident coordination and leadership body that is consulted on multi-sectoral issues pertaining to camp life. It's made up of a Chairman, a Deputy, Zone Leaders and women representatives. Zone Leaders gather information on each zone in the camp, provide information to people living in each zone and advocate on behalf of their respective zone residents.
- Women's Association** - the Women's Association runs a grinding mill (income generation project), helps with the distribution of sanitary pads and provides representatives to other camp management committees, including the Food Distribution Committee and the RCC.
- Food Distribution Committee** – provide information about food distribution to the community, assist with scooping and provide feedback on the quality of food.
- Plans are underway to establish the following resident self-governance associations:
 - Youth Committee**
 - Neighbourhood Watch Programme**
 - Disability Committee**

Local Administration

- The Sub-Kebele Chairman is responsible for local (non-refugee) administration on behalf of Dollo Ado Woreda, Somali Regional State, Ethiopia. The Sub-Kebele Chairman and his administrative committee are consulted about refugee-host community relationship, natural resource use and managing conflicts between the refugee and host communities, with the help of local elders.



Kobe Camp: Who Does What Where

Health



Activities	Actors
<ul style="list-style-type: none"> Primary Health Care offers in-patient, out-patient, basic laboratory services, Immunization (EPI) and reproductive health including basic emergency obstetric and neonatal care services. 	MSF-Spain
<ul style="list-style-type: none"> Mobile vaccination teams conducted a vaccination campaign for measles 	MSF-Spain, UNHCR, UNICEF, ARRA
<ul style="list-style-type: none"> Mobile health teams conducted a vaccination campaign for polio and performed MUAC screening 	UNHCR, ARRA, UNICEF
<ul style="list-style-type: none"> Mobile health teams are doing outreach 	UNICEF
<ul style="list-style-type: none"> Community Health workers identify new cases, assist in health education, community referrals to the health facilities and following up on patients already in the health programmes among other activities 	MSF-Spain, IMC
<ul style="list-style-type: none"> Rehabilitation programmes for disabled people 	RADO
Infrastructure	
<ul style="list-style-type: none"> Health Clinic has in-patient and out-patient treatment and EPI rooms. For reproductive health, there is an anti-natal care room, delivery room and post-natal care room. The clinic has a laboratory and a dispensary 	MSF-Spain
Gaps	
<ul style="list-style-type: none"> Comprehensive Emergency obstetric care and emergency surgical services 	
<ul style="list-style-type: none"> Satellite Clinics where health services can be decentralized into the camp. 	

Nutrition



Activities	Actors
<ul style="list-style-type: none"> Treatment of SAM (Severe Acute Malnutrition) 	MSF-Spain
<ul style="list-style-type: none"> Treatment of MAM (Moderate Acute Malnutrition) 	IMC
<ul style="list-style-type: none"> MOC (Malnourished Other Categories) Programme, a targeted feeding programme for severely and moderately malnourished children between 5 years and 18 years. 	MSF-S, IMC
<ul style="list-style-type: none"> Blanket / complimentary feeding for all children under 5 	IMC
<ul style="list-style-type: none"> Mobile nutrition team doing outreach 	UNICEF
Infrastructure	
<ul style="list-style-type: none"> OTP Centre 	MSF-Spain
<ul style="list-style-type: none"> MAM / Blanket Feeding Centres 	IMC
Gaps	
<ul style="list-style-type: none"> Stabilization Centre (SC) where all severe acute malnourished children with complications are treated in an in-patient department. Currently, these children are transferred to the Melkadida SC. 	

Water, Hygiene & Sanitation



Activities	Actors
<ul style="list-style-type: none"> Trucking of treated water from the non-permanent water treatment plant 	IRC, UNHCR
<ul style="list-style-type: none"> Hygiene Promotion 	IMC, ARRA
<ul style="list-style-type: none"> Solid Waste Disposal activities have been initiated 	IMC
Infrastructure	
<ul style="list-style-type: none"> Permanent water system installation, including a water treatment plant is being installed near Kobe and a pipeline project is underway 	IRC, UNHCR
<ul style="list-style-type: none"> Communal latrines 	IMC, UNHCR
<ul style="list-style-type: none"> Family latrines 	IMC, UNHCR
Gaps	
<ul style="list-style-type: none"> Repairs and maintenance of existing infrastructure 	

Protection & Community Services





Activities	Actors
<ul style="list-style-type: none"> On-site ARRA Protection Officer is the first point of contact for security liaison and cases of detention 	ARRA
<ul style="list-style-type: none"> Child protection activities, including establishing child-friendly spaces 	UNHCR, SC-US
<ul style="list-style-type: none"> Supporting camp self-management committees 	UNHCR, ARRA
<ul style="list-style-type: none"> Establishing programmes that prevent and respond to Sexual and Gender Based Violence incidents 	UNHCR, IMC
<ul style="list-style-type: none"> Weekly protection monitoring and counseling; individual case follow-up 	UNHCR
<ul style="list-style-type: none"> Supporting refugees with specific needs 	UNHCR, RADO
<ul style="list-style-type: none"> Provision of community services and psycho-social counseling 	UNHCR
<ul style="list-style-type: none"> Facilitation of family reunification, including for Unaccompanied Minors and Separated Children 	UNHCR, ARRA
<ul style="list-style-type: none"> Registration updates, lost ration cards and newborn and death registration ("continuous registration") 	UNHCR, ARRA
<ul style="list-style-type: none"> Provision of sanitary materials to women and girls reproductive age (13 – 49) 	UNHCR, ARRA
Infrastructure	
<ul style="list-style-type: none"> Women's Centre is under construction 	IMC
Gaps	
<ul style="list-style-type: none"> Legal aid counseling 	
<ul style="list-style-type: none"> Capacity building for Camp Security and Police Officers in the camp 	
<ul style="list-style-type: none"> Community Centre 	
<ul style="list-style-type: none"> Mobility devices (e.g. wheelchairs, crutches) for the disabled 	
<ul style="list-style-type: none"> Community outreach / information programme 	
<ul style="list-style-type: none"> Mixed local / refugee committee 	
<ul style="list-style-type: none"> Child friendly spaces and facilities need improvement 	


UNHCR gratefully acknowledges the support of the following partners in Kobe Camp:





Kobe Camp: Who Does What Where (continued)


Shelter 	
Activities	Actors
<ul style="list-style-type: none"> Emergency shelter (tent) supply and erection Semi-permanent transitional shelter provision Semi-permanent transitional shelter funding Dome shelter project implementer (semi-permanent transitional shelter) 	UNHCR, NRC NRC UNHCR AHA, AHADA
Infrastructure	
<ul style="list-style-type: none"> Phase 1 Emergency Shelter: Lightweight Emergency Tent; 2 rooms; can accommodate average family size of 5 persons; 15-21m² Phase 1 Emergency Shelter: Family Tent; 1 room; can accommodate average family size of 5 persons; 16 m² main floor area, plus two 3.5m² vestibules, for a total area of 23 m² Phase 1 Emergency Shelter: NRC Tent (1 room); can accommodate one family Phase 2 Semi-Permanent Transitional Shelter: dome shelters; 1 room; (metal domes covered with plastic sheeting) Phase 2 Semi-Permanent Transitional Shelter: bamboo and mud brick shelters; 1 room; (note: project commencing) 	UNHCR UNHCR NRC AHA, UNHCR NRC, UNHCR
Gaps	
<ul style="list-style-type: none"> Semi-Permanent Transitional Shelter is in early stages 	

Core Relief Items 	
Activities	Actors
<ul style="list-style-type: none"> Sleeping mats, jerry cans, buckets, kitchen sets, soap, women's sanitary napkins, female underwear and blankets have been distributed 	UNHCR, ARRA
Infrastructure	
<ul style="list-style-type: none"> Central Logistics Base in Hilaweyn Camp (which supplies Kobe) consists of 5 rubhalls Kobe Camp has 1 CRI-dedicated rubhall 	UNHCR UNHCR
Gaps	
<ul style="list-style-type: none"> Household fuel Lamps 	

Logistics 	
Activities	Actors
<ul style="list-style-type: none"> Truck fleet for field deliveries Transportation of family reunification cases Office and facilities construction Vehicle maintenance, generator repair and other technical support services 	UNHCR IOM UNHCR THW
Infrastructure	
<ul style="list-style-type: none"> Logistics infrastructure for Kobe Camp is located in Hiloweyn Camp and Dollo Ado 	
Gaps	
<ul style="list-style-type: none"> Further upgrade of access roads to Type B 	

Education 	
Activities	Actors
<ul style="list-style-type: none"> Plans for emergency primary education are underway 	SC-US, ARRA
Infrastructure	
<ul style="list-style-type: none"> Emergency school is under construction 	SC-US
Gaps	
<ul style="list-style-type: none"> Primary and secondary school facilities (classrooms, books, desks, teachers, school WASH facilities) 	

Environment 	
Activities	Actors
<ul style="list-style-type: none"> Environment assessment 	PWO
Infrastructure	
<ul style="list-style-type: none"> n/a 	
Gaps	
<ul style="list-style-type: none"> Household fuel / fuel-efficient stoves Environment conservation awareness raising campaign 	

Food 	
Activities	Actors
<ul style="list-style-type: none"> Food supply, transportation and distribution 	WFP, ARRA
Infrastructure	
<ul style="list-style-type: none"> 1 Food-dedicated Rubhall and a food distribution point 	ARRA
Gaps	
<ul style="list-style-type: none"> Secondary distribution points Food distribution and post-distribution monitoring 	

UNHCR gratefully acknowledges the support of the following partners in Kobe Camp:



For updated sectoral indicators from Kobe Camp, please consult <http://data.unhcr.org/horn-of-africa>