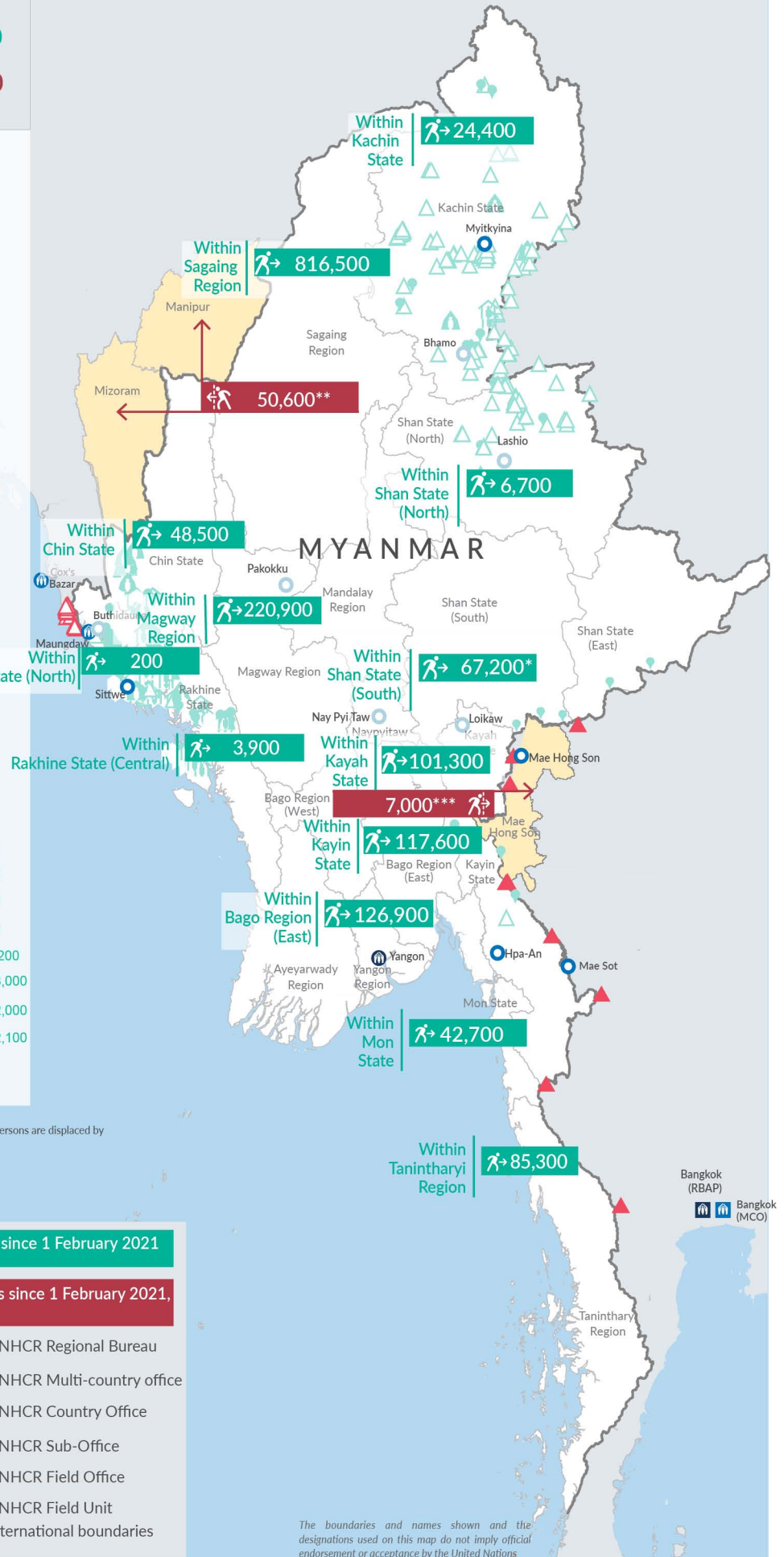
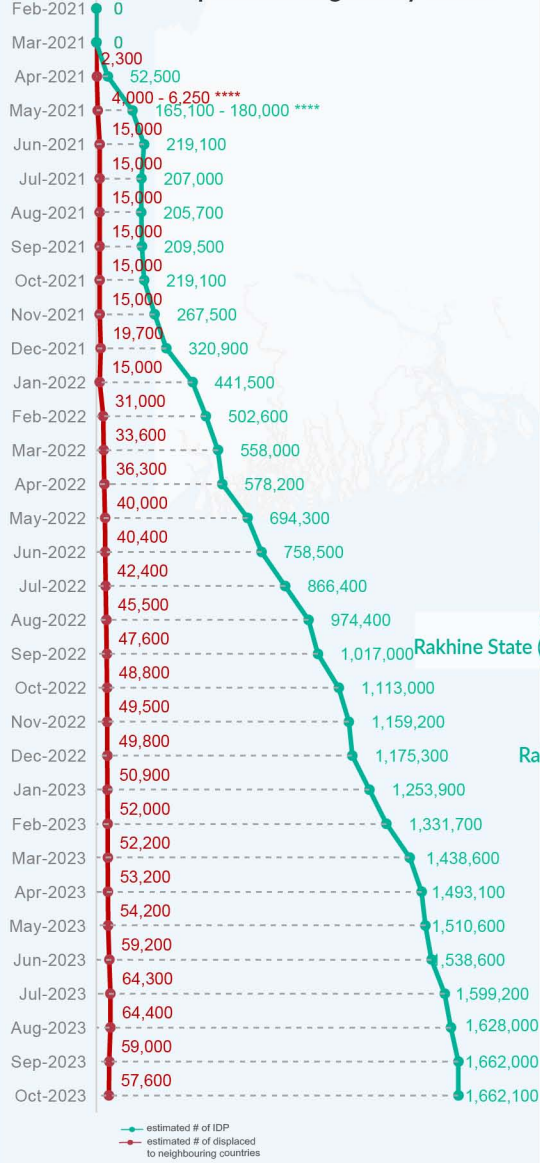


Key figures

Estimated # of IDPs → 1,662,100
 Estimated # of displaced to neighbouring countries → 57,600

Source : UN in Myanmar

Estimated displacement figures by Month



*60,200 persons are displaced by armed conflict in neighbouring Kayah State while 7,000 persons are displaced by inter-EAO conflict between SSPP and RCSS.

**UN Estimates

***Estimates by Tak Border Command Center (TBCC)

****Range of figures was used while data collection was in progress.

Estimated internal displacement within Myanmar since 1 February 2021 (rounded to the nearest hundred)

Estimated displacement to neighbouring countries since 1 February 2021, who remain displaced (rounded to the nearest hundred)

- IDP unplanned settlement (pre-1 Feb 2021)
- IDP Center (pre-1 Feb 2021)
- IDP spontaneous location (pre-1 Feb 2021)
- IDP planned settlement (pre-1 Feb 2021)
- Temporary shelter for displaced people from Myanmar
- Refugee, planned settlement
- States/Provinces with new arrivals
- UNHCR Regional Bureau
- UNHCR Multi-country office
- UNHCR Country Office
- UNHCR Sub-Office
- UNHCR Field Office
- UNHCR Field Unit
- International boundaries

The boundaries and names shown and the designations used on this map do not imply official endorsement or acceptance by the United Nations

Key figures

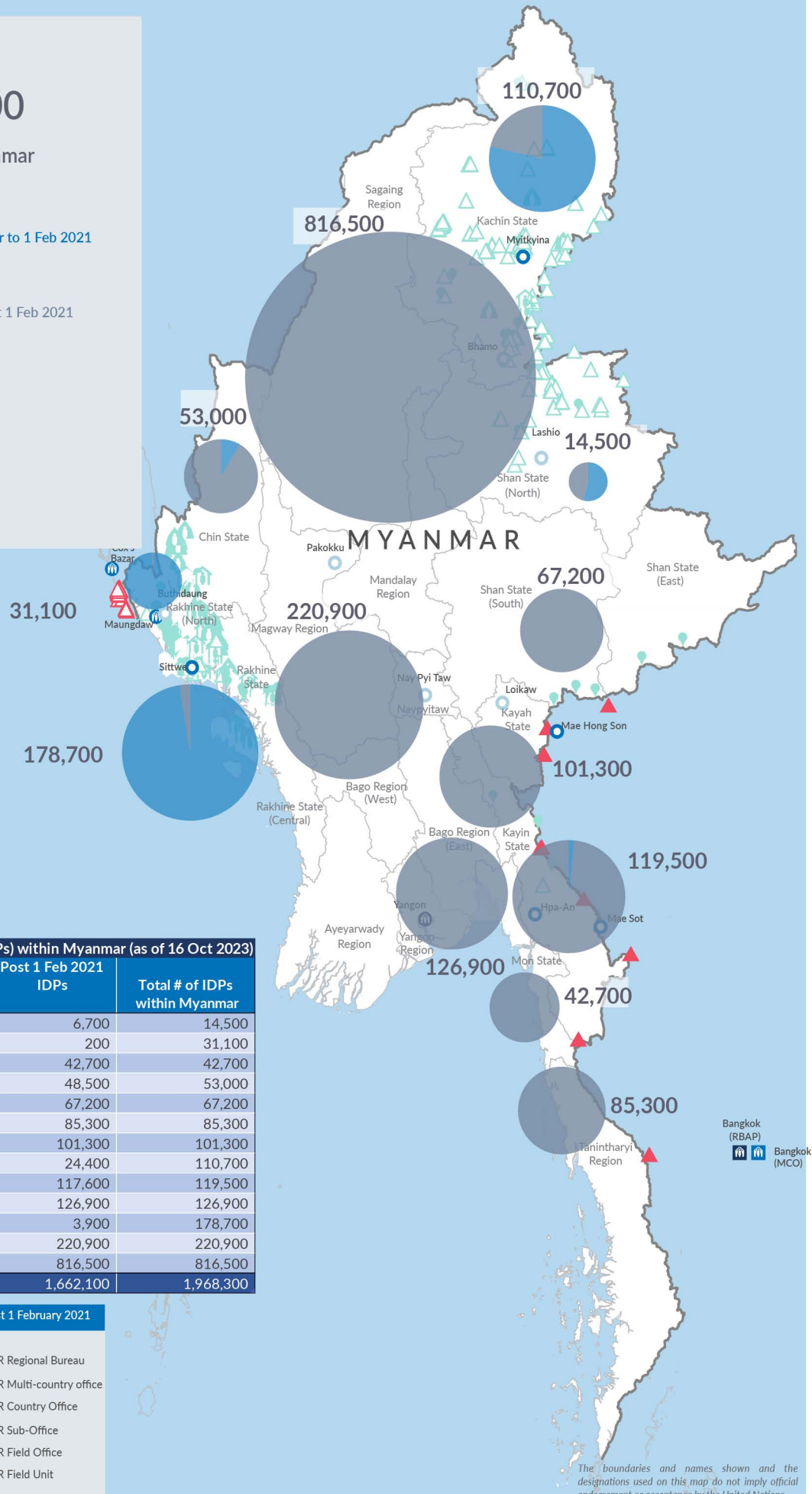

1,968,300

Estimated total IDPs within Myanmar



306,200
 Estimated # of IDPs displaced prior to 1 Feb 2021
(As of 30 Jun, 2023)

1,662,100
 Estimated # of IDPs displaced post 1 Feb 2021
(As of 16 Oct, 2023)
 Prior to 1 Feb 2021
 Post 1 Feb 2021

Source : UN in Myanmar


Estimated total internally displaced person (IDPs) within Myanmar (as of 16 Oct 2023)

State/Region	Prior to 1 Feb 2021 IDPs	Post 1 Feb 2021 IDPs	Total # of IDPs within Myanmar
Shan State (North)	7,800	6,700	14,500
Rakhine State (North)	30,900	200	31,100
Mon State	-	42,700	42,700
Chin State	4,500	48,500	53,000
Shan State (South)	-	67,200	67,200
Tanintharyi Region	-	85,300	85,300
Kayah State	-	101,300	101,300
Kachin State	86,300	24,400	110,700
Kayin State	1,900	117,600	119,500
Bago Region (East)	-	126,900	126,900
Rakhine State (Central)	174,800	3,900	178,700
Magway Region	-	220,900	220,900
Sagaing Region	-	816,500	816,500
Grand Total	306,200	1,662,100	1,968,300

 **Estimated internal displacement within Myanmar Pre+Post 1 February 2021**
(rounded to the nearest hundred)

-  IDP unplanned settlement (pre-1 Feb 2021)
-  IDP Center (pre-1 Feb 2021)
-  IDP spontaneous location (pre-1 Feb 2021)
-  IDP planned settlement (pre-1 Feb 2021)
-  Temporary shelter for displaced people from Myanmar
-  Refugee, planned settlement
-  International boundaries
-  UNHCR Regional Bureau
-  UNHCR Multi-country office
-  UNHCR Country Office
-  UNHCR Sub-Office
-  UNHCR Field Office
-  UNHCR Field Unit

The boundaries and names shown and the designations used on this map do not imply official endorsement or acceptance by the United Nations