

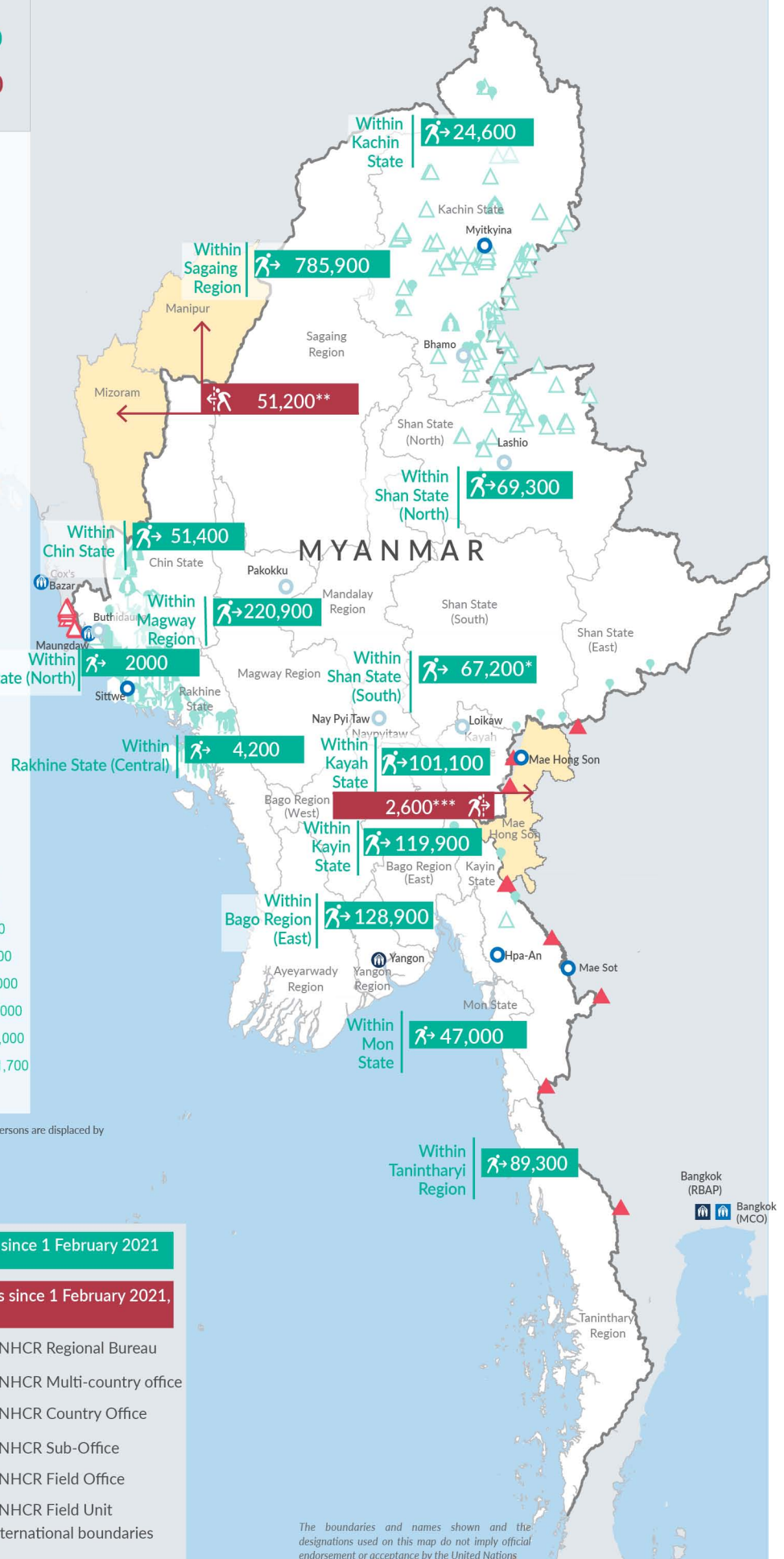
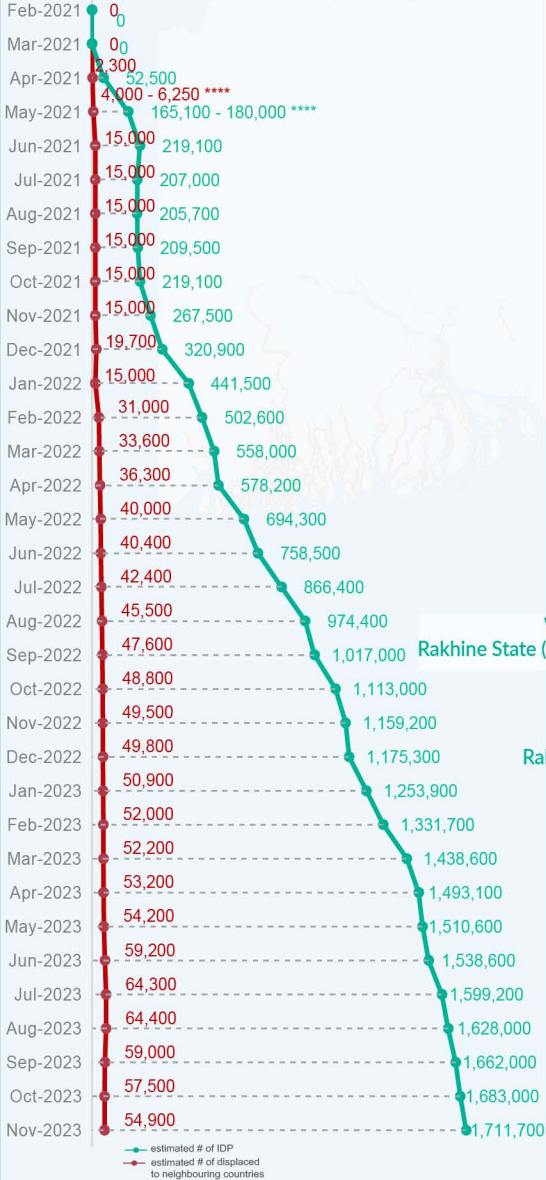
Key figures

Estimated # of IDPs  1,711,700

Estimated # of displaced to neighbouring countries  53,800

Source : UN in Myanmar

Estimated displacement figures by Month




*60,200 persons are displaced by armed conflict in neighbouring Kayah State while 7,000 persons are displaced by inter-EAO conflict between SSPP and RCSS.

**UN Estimates

***Estimates by Tak Border Command Center (TBCC)

****Range of figures was used while data collection was in progress.

 Estimated internal displacement within Myanmar since 1 February 2021 (rounded to the nearest hundred)

 Estimated displacement to neighbouring countries since 1 February 2021, who remain displaced (rounded to the nearest hundred)

-  IDP unplanned settlement (pre-1 Feb 2021)
-  IDP Center (pre-1 Feb 2021)
-  IDP spontaneous location (pre-1 Feb 2021)
-  IDP planned settlement (pre-1 Feb 2021)
-  Temporary shelter for displaced people from Myanmar
-  Refugee, planned settlement
-  States/Provinces with new arrivals
-  UNHCR Regional Bureau
-  UNHCR Multi-country office
-  UNHCR Country Office
-  UNHCR Sub-Office
-  UNHCR Field Office
-  UNHCR Field Unit
-  International boundaries

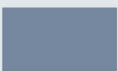
The boundaries and names shown and the designations used on this map do not imply official endorsement or acceptance by the United Nations

Key figures

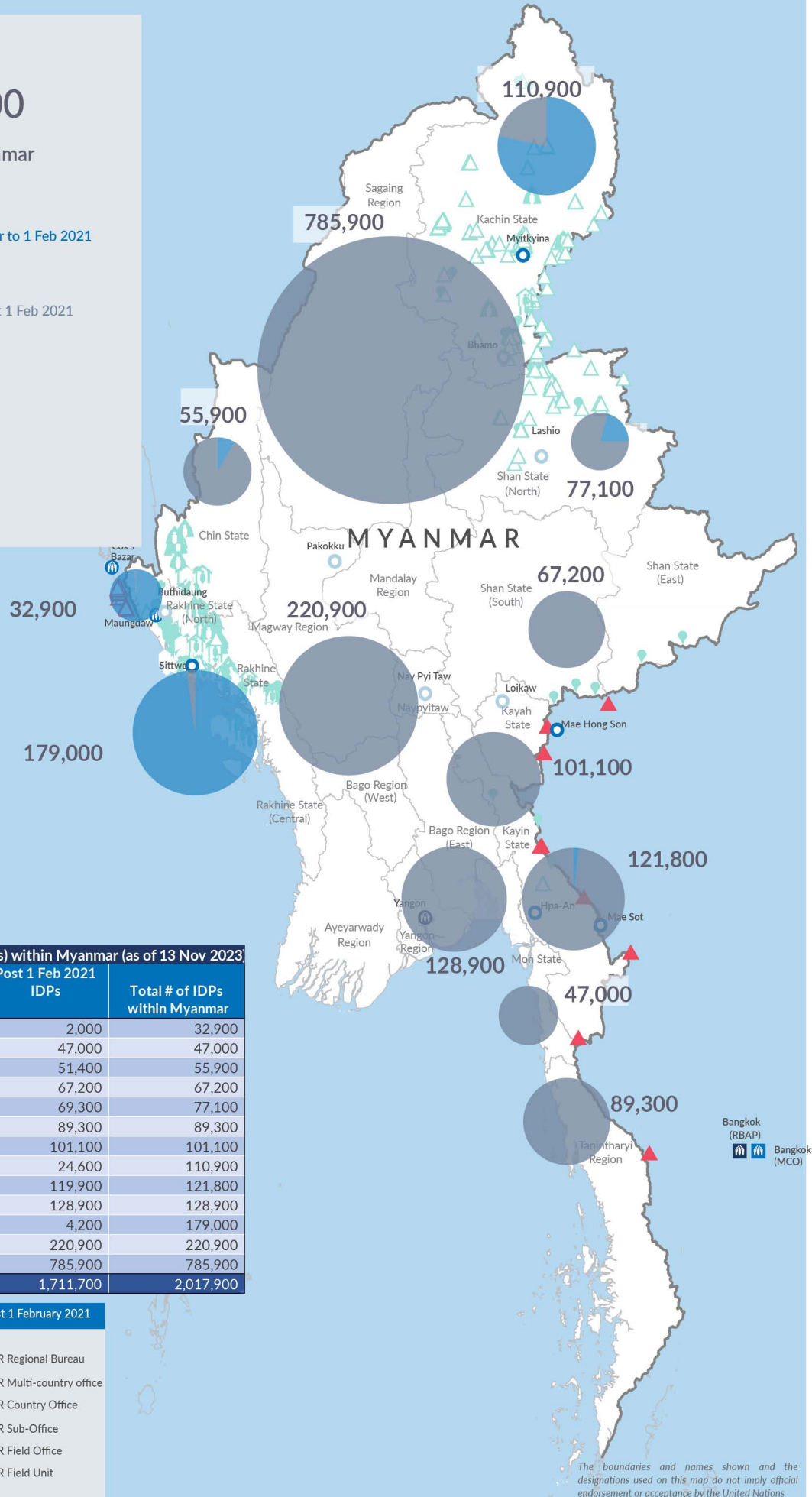

2,017,900

Estimated total IDPs within Myanmar


306,200
 Estimated # of IDPs displaced prior to 1 Feb 2021
(As of 30 Jun, 2023)


1,711,700
 Estimated # of IDPs displaced post 1 Feb 2021
(As of 13 Nov, 2023)
 Prior to 1 Feb 2021
 Post 1 Feb 2021

Source : UN in Myanmar



Estimated total internally displaced person (IDPs) within Myanmar (as of 13 Nov 2023)

State/Region	Prior to 1 Feb 2021 IDPs	Post 1 Feb 2021 IDPs	Total # of IDPs within Myanmar
Rakhine State (North)	30,900	2,000	32,900
Mon State	-	47,000	47,000
Chin State	4,500	51,400	55,900
Shan State (South)	-	67,200	67,200
Shan State (North)	7,800	69,300	77,100
Tanintharyi Region	-	89,300	89,300
Kayah State	-	101,100	101,100
Kachin State	86,300	24,600	110,900
Kayin State	1,900	119,900	121,800
Bago Region (East)	-	128,900	128,900
Rakhine State (Central)	174,800	4,200	179,000
Magway Region	-	220,900	220,900
Sagaing Region	-	785,900	785,900
Grand Total	306,200	1,711,700	2,017,900


Estimated internal displacement within Myanmar Pre+Post 1 February 2021
(rounded to the nearest hundred)

-  IDP unplanned settlement (pre-1 Feb 2021)
-  IDP Center (pre-1 Feb 2021)
-  IDP spontaneous location (pre-1 Feb 2021)
-  IDP planned settlement (pre-1 Feb 2021)
-  Temporary shelter for displaced people from Myanmar
-  Refugee, planned settlement
-  International boundaries
-  UNHCR Regional Bureau
-  UNHCR Multi-country office
-  UNHCR Country Office
-  UNHCR Sub-Office
-  UNHCR Field Office
-  UNHCR Field Unit

The boundaries and names shown and the designations used on this map do not imply official endorsement or acceptance by the United Nations