

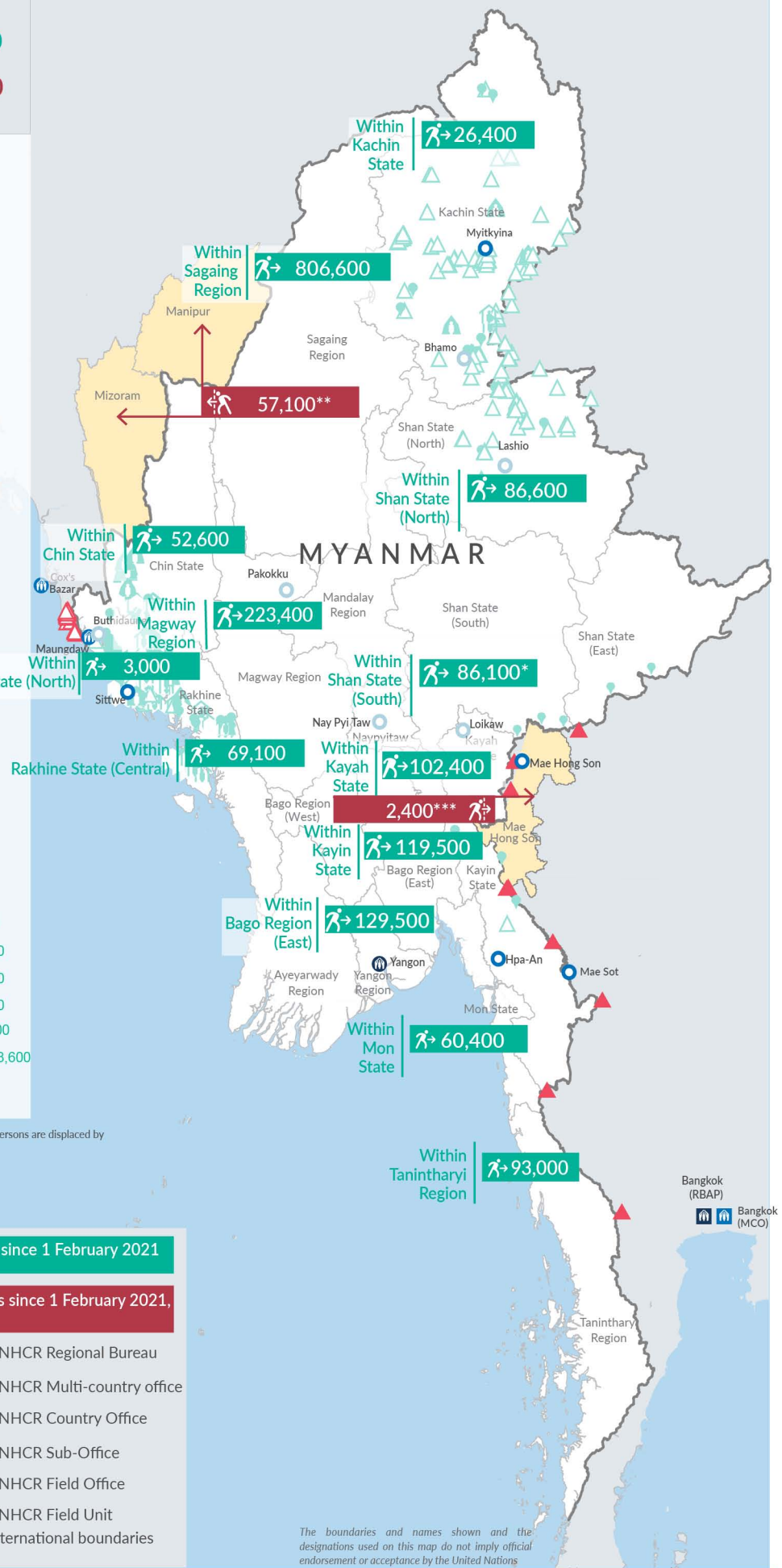
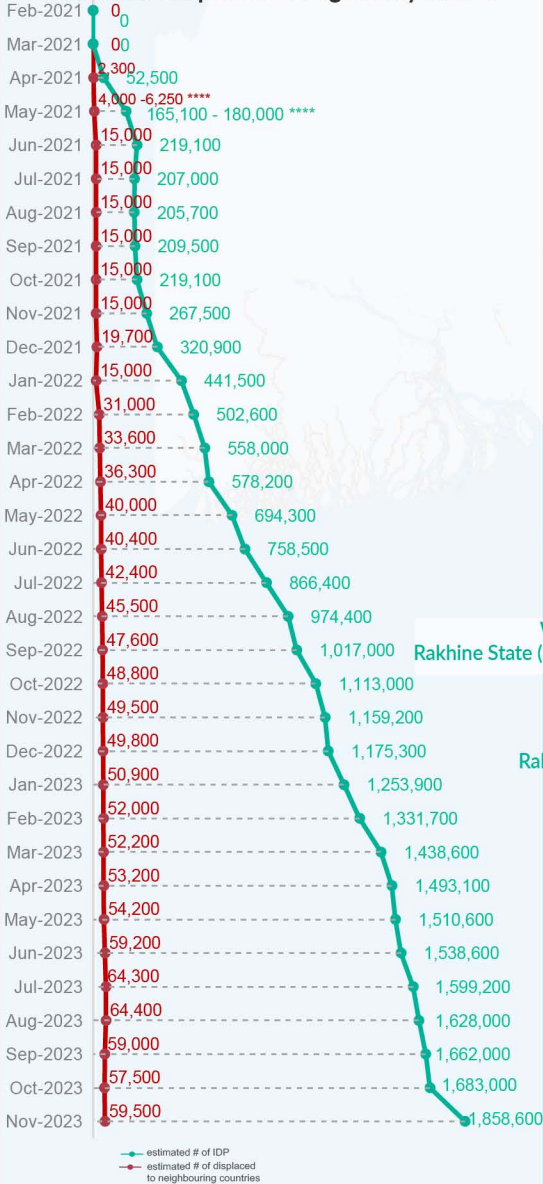
### Key figures

Estimated # of IDPs → 1,858,600

Estimated # of displaced to neighbouring countries → 59,500

Source : UN in Myanmar

### Estimated displacement figures by Month



\*79,100 persons are displaced by armed conflict in neighbouring Kayah State while 7,000 persons are displaced by inter-EAO conflict between SSPP and RCSS.

\*\*UN Estimates

\*\*\*Estimates by Tak Border Command Center (TBCC)

\*\*\*\*Range of figures was used while data collection was in progress.

Estimated internal displacement within Myanmar since 1 February 2021 (rounded to the nearest hundred)

Estimated displacement to neighbouring countries since 1 February 2021, who remain displaced (rounded to the nearest hundred)

- IDP unplanned settlement (pre-1 Feb 2021)
- IDP Center (pre-1 Feb 2021)
- IDP spontaneous location (pre-1 Feb 2021)
- IDP planned settlement (pre-1 Feb 2021)
- Temporary shelter for displaced people from Myanmar
- Refugee, planned settlement
- States/Provinces with new arrivals
- UNHCR Regional Bureau
- UNHCR Multi-country office
- UNHCR Country Office
- UNHCR Sub-Office
- UNHCR Field Office
- UNHCR Field Unit
- International boundaries

The boundaries and names shown and the designations used on this map do not imply official endorsement or acceptance by the United Nations

## Key figures


**2,164,800**

Estimated total IDPs within Myanmar

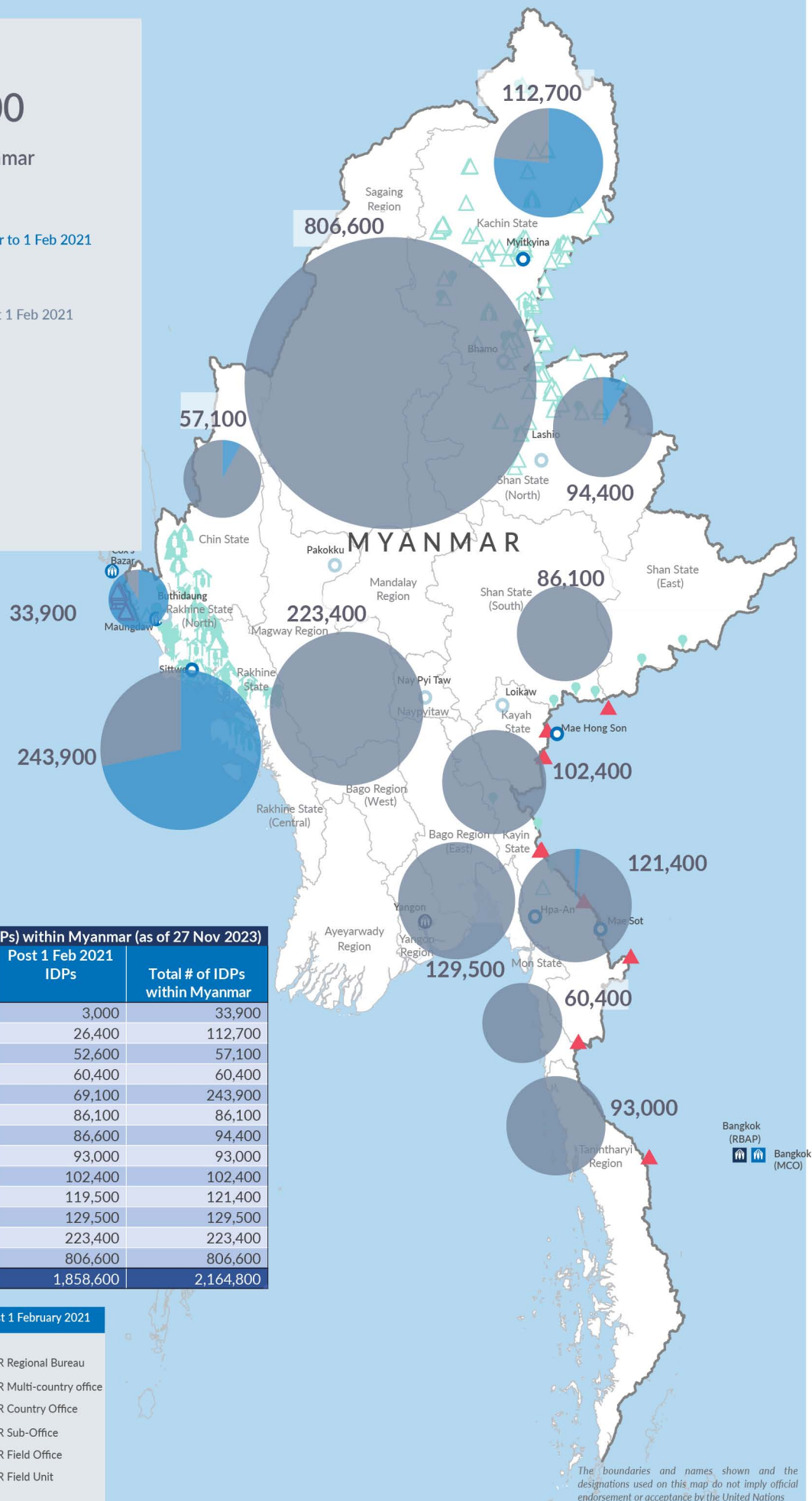

**306,200**  
 Estimated # of IDPs displaced prior to 1 Feb 2021  
 (As of 30 Jun, 2023)


**1,858,600**  
 Estimated # of IDPs displaced post 1 Feb 2021  
 (As of 27 Nov, 2023)


 Prior to 1 Feb 2021

 Post 1 Feb 2021

Source : UN in Myanmar


**Estimated total internally displaced person (IDPs) within Myanmar (as of 27 Nov 2023)**

State/Region	Prior to 1 Feb 2021 IDPs	Post 1 Feb 2021 IDPs	Total # of IDPs within Myanmar
Rakhine State (North)	30,900	3,000	33,900
Kachin State	86,300	26,400	112,700
Chin State	4,500	52,600	57,100
Mon State	-	60,400	60,400
Rakhine State (Central)	174,800	69,100	243,900
Shan State (South)	-	86,100	86,100
Shan State (North)	7,800	86,600	94,400
Tanintharyi Region	-	93,000	93,000
Kayah State	-	102,400	102,400
Kayin State	1,900	119,500	121,400
Bago Region (East)	-	129,500	129,500
Magway Region	-	223,400	223,400
Sagaing Region	-	806,600	806,600
<b>Grand Total</b>	<b>306,200</b>	<b>1,858,600</b>	<b>2,164,800</b>

 **Estimated internal displacement within Myanmar Pre+Post 1 February 2021**  
 (rounded to the nearest hundred)

-  IDP unplanned settlement (pre-1 Feb 2021)
-  IDP Center (pre-1 Feb 2021)
-  IDP spontaneous location (pre-1 Feb 2021)
-  IDP planned settlement (pre-1 Feb 2021)
-  Temporary shelter for displaced people from Myanmar
-  Refugee, planned settlement
-  International boundaries
-  UNHCR Regional Bureau
-  UNHCR Multi-country office
-  UNHCR Country Office
-  UNHCR Sub-Office
-  UNHCR Field Office
-  UNHCR Field Unit

The boundaries and names shown and the designations used on this map do not imply official endorsement or acceptance by the United Nations