

SUDAN SITUATION

28 November- 4 December 2023



On 30 November, UNHCR and partners began the relocation of Sudanese refugees living in makeshift shelters in the Chadian border town of Adre to Alacha, a newly built refugee site. © UNHCR/Ying Hu

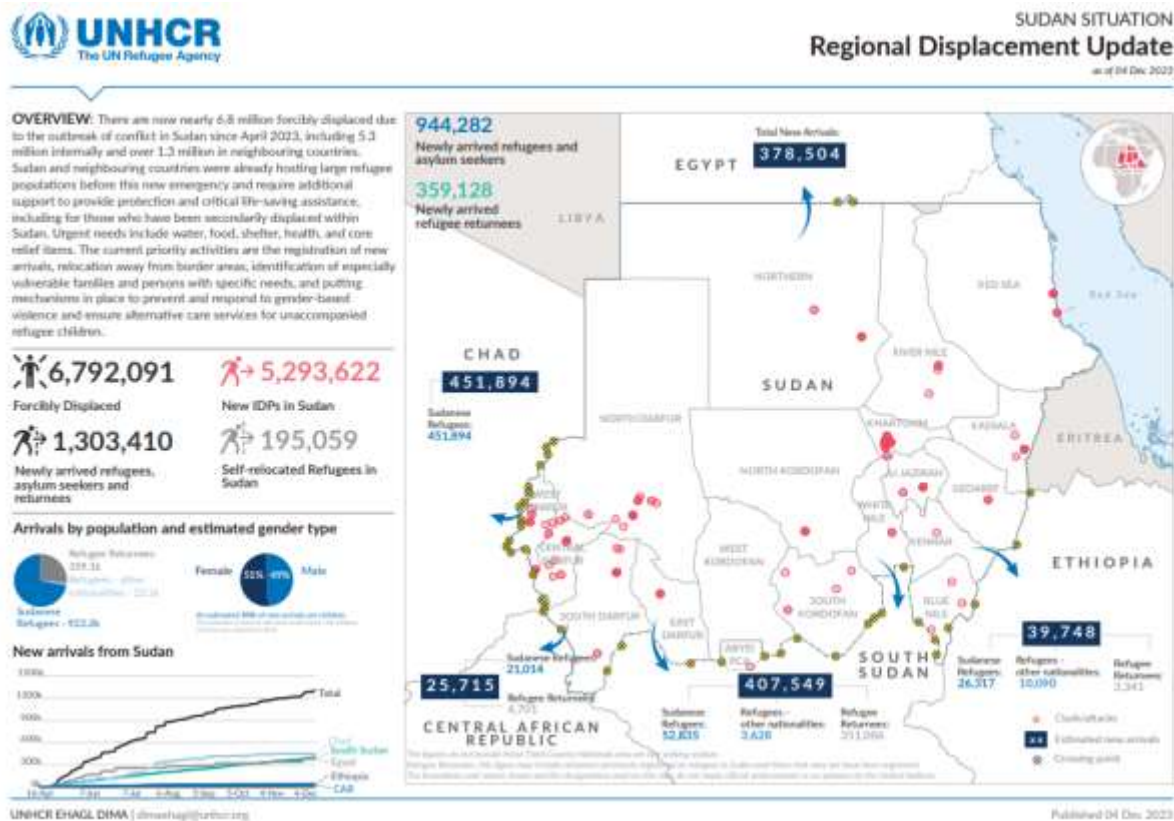
Highlights

The ongoing clashes between the Sudanese Armed Forces (SAF) and Rapid Support Forces (RSF) that started on 15 April 2023 have continued for 233 days as of 4 December.

On 1 December, the UN Security Council [decided](#) to terminate the mandate of the UN political mission in Sudan. Sudan's military government has said that the UN mission was failing to meet expectations and called for its immediate withdrawal last month. Adopting resolution 2715 (2023), the Security Council requested UNITAMS to "immediately start on 4 December 2023, the cessation of its operations and the process of the transfer of its tasks, where appropriate and to the extent feasible, to UN agencies, funds and programmes, with the objective of completing this by 29 February 2024."

On 4 December, the UN Spokesperson [said](#) that humanitarians and partners are scaling up a response to the outbreak of cholera across Sudan. This effort includes detection and treatment of cases and addressing water, sanitation and hygiene issues. OCHA is warning that the outbreak continues to worsen, with a 70 per cent surge in reported cases over the past three weeks. To date, nearly 2.2 million oral cholera vaccinations have been administered in the worst-affected states. As of 4 December, nearly 5,200 suspected cases of cholera have been registered, including more than 160 deaths, according to the World Health Organization and Sudan's health ministry. In all, at least nine states have registered cases since 26 September. The war has led to a dramatic deterioration in healthcare, with two thirds of the population now lacking access and more than 70 per cent of health facilities in conflict areas out of service.

Media reports that talks between the Sudanese Armed Forces (SAF) and Rapid Support Forces (RSF) in Jeddah, Kingdom of Saudi Arabia have been [suspended indefinitely due to the failure of the parties to implement commitments made](#).



Situation and Operational Response

SUDAN

Highlights

- Through cross-border operations from Chad, WFP successfully distributed food assistance to refugees and members of the host community in Um Shalaya camp, Central Darfur on 28 November. UNHCR is planning a distribution of non-food items in the coming days.

Protection & Registration

Across the operation, UNHCR field offices are commemorating the 16-Days of Activism against Gender-based Violence through information campaigns and public engagement activities.

In Northern State, UNHCR is enhancing its awareness-raising activities on smuggling and human trafficking in response to growing concerns about the increase in deportations from Egypt. In November, close to 1,600 people, including documented refugees were reportedly deported from Egypt. UNHCR is seeking to strengthen information sharing and coordination with local authorities to facilitate the provision of support to the individuals.

In South Darfur, some 1,880 households have reportedly been displaced in Buram locality following inter-communal clashes and have yet to receive any assistance.

Site Management

In Jazirah State, UNHCR's partner has received clearance from local authorities to resume site mapping and site assessment activities, following a period of suspension due to security concerns. It is hoped that other partners engaged in similar activities will also receive clearances to facilitate site management activities.

Health & Nutrition

In South Kordofan State, an outbreak of measles has been reported by community-based protection networks in Al Sarajiya refugee settlement. UNHCR and its partner will transport available drugs from Abu Jubayhah town to support the primary health care centre address the increased needs of the population in the refugee settlement.

Core Relief Items (CRIs)/Shelter

In Blue Nile State, UNHCR provided NFI kits to almost 770 recently registered refugees and asylum-seekers arriving from Ethiopia. A standard NFI kit comprises blankets, sleeping mats, kitchen sets and mosquito nets amongst others and is intended to support a household of five.

WASH

In White Nile State, 50 household latrines in Alagaya, Alganaa, and Dabat Bosin camps and the extension of water network in Al Kashafa and Jouri camps are under construction to improve water and sanitation conditions in the camps. WASH partners are regularly sensitizing the population on the appropriate use and maintenance of these facilities, especially in light of the increased risks of water-borne diseases and incidence of cholera in the country.

Cash Based Initiatives (CBI)

In Blue Nile State, 800 refugee returnee and IDP returnee households in Baw and Kurmuk localities received cash for shelter assistance. Each household receives a one-off cash support of USD 400.

CHAD

Highlights

- Chadian authorities informed UNHCR of the deteriorating security situation in Sudan and signaled humanitarian workers should expect population movements towards the Sila Province in Chad, (Amdjarass) and other population movements towards the Central African Republic.
- Inflation and poverty continue in operational areas including an increase in the costs of fuel. More support is needed to avert a major impact on the lives of refugees, refugee hosting communities and to maintain peaceful coexistence between the two communities.
- The campaign for the constitutional referendum began on 26 November. Most of UNHCR's interlocutors in the various ministries are out in the field to campaign. The outcome of the campaign might directly or indirectly affect the operation in terms of security and movement of staff and programme activities.

Relocation

Relocation of new refugees continued during the reporting period. The first five convoys from the Adré refugee spontaneous site arrived in the new Alacha refugee camp. A total of 2,552 individuals have been relocated so far. In Iriba ten convoys composed of 5,531 individuals were relocated from Tine border entry point to the Touloum refugee camp.

As of 28 November, a total of 187,710 individuals have been relocated from the border areas to consolidated camps and provided protection and assistance.

Protection

Between 27 November to 1 December, the Immigration Police recorded 1,698 new arrivals (428 households) who crossed into Chad. This figure excludes those who bypassed the immigration posts and went directly to the refugee spontaneous sites.

A total of 5,693 individuals (1,367 households) were registered biometrically during the week in Arkoum, and Djabal. A total of 123,479 individuals have been biometrically registered since the start of the emergency.

Health and Nutrition

Since the beginning of the emergency, a total of 208,796 medical consultations have been conducted, including 27,525 consultations in the past week. The most common health issues remain malaria, acute respiratory infections, watery diarrhoea, and malnutrition.

During the reporting period, 138,237 children were screened for malnutrition. A total of 19,960 cases of children aged 6 to 59 months were treated for moderate acute malnutrition (MAM), and 11,237 for severe acute malnutrition (SAM). Out of 37,989 children screened last week, 1,745 were identified and treated for MAM and 645 for SAM.

14,538 pregnant and lactating women were screened, and 1,577 out of them were treated for MAM. Last week, 1,258 pregnant women were screened including 110 identified with MAM.

A total of 2,881 deliveries were attended to by qualified personnel since the start of the emergency, including 489 deliveries last week.

Routine vaccination (Expanded Vaccination Program (EPI)) commenced in the Metché Refugee Camp (Ouaddai Province) during the reporting week with all the antigens provided by the Adré district health facility. MSF Switzerland and MSF Spain in agreement with the district health authorities will provide vaccines for the refugee sites in Metché and Ourang.

Shelter Infrastructure and WASH

2,300 emergency shelters were finalized by the Chadian Red Cross. A total of 3,480 shelters have been built so far in Alacha and 1,040 refugee housing units (RHUs). In Iriba and Amjarass, 164 shelters and 129 latrines were constructed during the reporting period. Thirty-one new latrines have been completed. This brings the total number of shelters constructed to 45,455, and 6,075 latrines since the start of the emergency.

IT & TELECOMS

Biometric registration is still ongoing in Djabal Refugee Camp (Sila Province) where UNHCR continues providing connectivity.

UNHCR continues extending VHF coverage in Farchana area. A new security communication equipment (VHF repeater) has been installed at Biski Site and Metché Camp, on a tower owned by a local mobile network operator (Airtel Tchad) to enhance the VHF network.

Central African Republic (CAR)

Highlights

- As of 4 December, UNHCR and the National Commission for Refugees (CNR) have biometrically registered a total of 10,423 Sudanese individuals (3,570 households). Since the beginning of the crisis, approximately 25,715 people have arrived in the Central African Republic (CAR) from Sudan. This includes 21,014 Sudanese refugees and 4,701 Central African returnees, with 89% comprising women and children. Besides those living in Korsi site (some 2,467) the rest are living in small villages in different prefectures.
- Since the beginning of the emergency, 2,467 people (1,260 households) have relocated to Korsi in Birao, where assistance is being delivered. UNHCR and CNR are strengthening monitoring and registration mechanisms for new arrivals at the site. Despite the temporary suspension of the assisted relocation to Korsi in July, due to the rainy season rendering roads impassable, refugees continued to arrive at the site on their own to seek assistance.

Protection

UNHCR's partner INTERSOS recorded 55 protection cases during the week. Persons with special needs, including persons with disabilities and unaccompanied and separated children, are being identified and referred to service providers for assistance. Since the beginning of the response to the crisis, 550 persons with special needs have been identified, including unaccompanied and separated children and women and men in need of protection. They have been referred to relevant services and are being followed up.

During the reporting period, UNHCR's partner INTERSOS conducted 71 monitoring visits with refugees and host communities in 6 locations in Tambaye District and Birao Health District. The monitoring allows for the identification of protection cases for assistance and referral to other relevant services. In addition, 13 survivors of gender-based violence (GBV) were identified, including cases of physical assault, sexual assault, forced marriage, rape, and psychological and emotional violence. Survivors were referred to relevant medical and legal services, and some received dignity kits.

At the "Ma Mbi Si" listening center, 12 individual counseling sessions were conducted with people with special needs. This included breastfeeding mothers in difficult living conditions and GBV survivors.

Three awareness-raising sessions were held in Korsi to disseminate the complaint management mechanism established to allow refugees to report issues to the actors intervening on site. The sessions reached 289 people. The complaint management and feedback mechanism allowed for the collection of 29 complaints during the reporting period, including reports on protection incidents, as well as feedback and requests for information on shelter, basic assistance, food security and durable solutions. Complaints are regularly followed up as required.

Education

UNHCR and its partner INTERSOS organized a four-day training during the reporting period covering modules on mental health, psychosocial support, GBV, and child protection referral mechanisms in schools. The training benefitted a total of 58 participants (19 women) including 25 teachers from the host community and 33 community relays from the refugee community participated.

UNHCR's partner INTERSOS organized two awareness-raising sessions this week at Djoubkia Primary School on peaceful coexistence and improving children's attendance at school. In total, 670 people (420 women) participated, including 465 parents (295 women) and 205 children (125 girls).

The school-based Psychosocial Support Team trained by UNHCR's partner INTERSOS identified two cases of GBV this week through the school-based child protection referral mechanisms created in the host-community schools attended by Sudanese refugees. Both cases were referred for psychological care and case management follow-up during the week.

In total, 162 children and adolescents (106 girls) participated in recreational activities and benefited from psychosocial support activities at the Child Friendly Space managed by UNHCR's partner INTERSOS at Korsi.

All education activities are being made possible thanks to the generous support of Education Cannot Wait through its First Emergency Response grant for Sudanese refugees in Central African Republic.

Health

NOURRIR, WHO, OHG-DS, IMC and the Biaro Health District jointly carried out 255 medical consultations during the week, including with 102 children under five years. Malaria, digestive bacterial infections, and

acute respiratory infections remained the main pathologies recorded. A total of 28 deliveries were assisted at the health centre in Korsi.

Shelter, CRIs and Food Distribution

From 16 September to 30 November, NOURRIR served a total of 9,816 hot meals in Korsi.

WASH

A total of 105 latrines and 104 emergency showers are now operational in Am-Dafock and Korsi. Community groups have been established in various blocks of Korsi to ensure the hygiene of the site and of the sanitation infrastructure, including water points.

UNHCR and its partner NOURRIR distributed 40,000 litres of water per day in Korsi to 2,467 Sudanese refugee households. However, the country's fuel shortage severely disrupts the water-pumping generator's regular operation, resulting in inadequate and erratic water supply. Long queues and potential tensions have emerged at water collection points due to this inconsistency. Adequate resources are necessary to meet these needs and effectively tackle the associated challenges. To tackle this issue, NOURRIR is building a second borehole to provide more water.

ETHIOPIA

Highlights

- As of 5 December, a total of 39,748 refugees and asylum-seekers including 3,341 Ethiopian refugee returnees, have fled violence in Sudan and arrived in Ethiopia.
- In Metema, Amhara region, UNHCR, in close collaboration with the Governments' Refugees and Returnees Service (RRS) and IOM, has successfully relocated 303 refugee families / 651 persons from the border to the Kumer transit center. As a result, these refugees now have access to basic services, such as health, water, shelter, and high-energy biscuits temporarily until the general food distribution planned early next week.
- Level three registration exercises in both Kumer site and Mandefro transit center are progressing.
- A new site has been identified by the authorities in the Benishangul Gumuz region (BGR) for newly arrived refugees who are currently staying in Kurmuk transit center. A joint team comprising of UNHCR and RRS, alongside technical experts, district officers and local community leaders carried out an initial site visit to the Ura Woreda Administration on 29 November 2023.
- The 16-days of activism against gender-based violence was commemorated in Metema (Amhara region) and Kurmuk (Benishangul Gumuz region).

Population Movements

As of 4 December, 39,748 refugees and asylum-seekers including 3,341 Ethiopian refugee returnees, have crossed from Sudan to Ethiopia. Most of the new arrivals are Sudanese (65.5 per cent) followed by Eritreans (20.8 per cent), Ethiopian returnees (9.4 per cent) and South Sudanese (4.1 per cent).

Following a peak in July when 13,788 new arrivals were registered, the trend in arrivals has gradually slowed down, with only 1,739 recorded in November.

Protection

Efforts are ongoing to strengthen community engagement and social cohesion efforts through the creation of Refugee Community Committees (RRC) and other structures.

UNHCR and the Development and Inter-Church Aid Commission (DICAC) have conducted the first GBV Safety Audit Assessment in Metema. Findings of the safety audits are under analysis and a report will be prepared.

Coordination: The Child Protection (CP)/GBV sub-working group takes place each week chaired by DICAC.

UNHCR, its partners and refugees in Metema and Kurmuk have commemorated the 16-day activism campaign against gender-based violence. This year, UNHCR has adapted the global theme. ***"Invest to prevent violence against women and girls."***

With the aim of restoring the family links, the Ethiopian Red Cross Society has provided free international phone calls and phone charging services to 366 refugees at the Metema point of entry as well as in the transit center. Additionally, in the coming week, the partner is planning to extend similar services to refugees hosted in Kumer refugee site.

At the Mandefro transit center in BGR, UNHCR's protection partner, DICAC, received and supported two GBV survivors in comprehensive case management, psychological first aid, counseling, and material provision (dignity kit) and were further referred to RRS for shelter. Additionally, psychological first aid and ongoing counseling were provided for 36 survivors and vulnerable members of the community.

A joint risk assessment was conducted at Kurmuk border point by Solidarity International and Benishangul Gumuz Development Association. Inventory reports show available food supplies and plans for distribution. RRS and UNICEF have aligned cash distribution to 2,158 families, and next week UNHCR will commence a verification exercise of the target population against UNHCR's level 1 (L1) household level registration data. Ethiopian Red Cross continues family services despite challenges tracing parents.

Registration

At Metema entry point, 39 families / 51 new arrivals were screened and pre-registered in Kobo tool, bringing the cumulative number of pre-registered new arrivals to 19,444 individuals to date. 303 families / 655 people were relocated from Metema entry point to Transit Center.

133 families and 379 people were biometrically registered (Level 3) at Transit Center, bringing the cumulative number of individually registered refugees and asylum seekers to 769 families / 1,519 people.

During Level 3 individual registration at Transit Centre, 19 cases were attended to by UNHCR and RRS at the litigation desk. Of these, eight cases were resolved and cleared for registration. Litigation cases included the registration by Eritreans previously registered in Tigray, family reunification, merging/splitting of cases and pass permits for medical referrals to Gondar and Addis.

Education

In Kurmuk, children aged 7-8 years old have access to education services. Plan International will cover the costs of incentives for 6 teachers, scholastic supplies, textbooks and plastic chairs., while the Partners In Ethiopia (PIE) team will also facilitate coaching and mentoring sessions.

Health and nutrition response

Nutrition

Out of 41 children who were screened for malnutrition at Kurmuk, 12 were identified as malnourished and referred to outpatient therapeutic and targeted supplementary feeding programmes. In Kurmuk transit site, Global Acute Malnutrition prevalence has been reported to be 26% which shows critical situation (>15%).

In the last weeks of November 671 children under five were screened for malnutrition at Kumer site and 68 of the children were identified as malnourished and subsequently referred for treatment. The Screening report in Kumer site depict 13% of GAM prevalence.

Food Security

Newly arrived refugees in Amhara region (Kumer site, Mandefro transit centre) and Benishangul Gumuz region (Kurmuk transit centre) received food assistance at 60% of recommended dietary allowance (RDA). The food basket contained Cereal 10kgs, pulse 1kg, Oil 0.45kg, Corn Soya Blend (CSB+) 1kg, Salt 0.15kg

November food distribution has been ongoing in Metema/Kumer reaching 5,742 so far, and Kurmuk distribution has been planned for next week.

WASH

In Kumer site, in collaboration with UNHCR's WASH partner, Innovation Humanitarian Solution (HIS) has provided 12.56 liters of water per person per day to 9,712 refugees and 81 members of the local community in the outskirts of the settlement. In view of expanding the water storage and distribution capacity, the partner has installed a total of nine water tanks, of which eight have a storage capacity of 10,000 liters and one has a capacity of 5000 liters, for a total of 54 water taps.

Site development, Shelter, CRIs

A shelter assessment was conducted in Kumer site in collaboration with UNHCR, RRS, and ANE to relocate vulnerable people from the entry point. 41 empty family tents have been identified, and the people in ten of the twenty available hangers will be consolidated, allowing them to accommodate newcomers.

In Kurmuk, limited resources have prevented the installation of partitions in the communal shelters, leading multiple families to share a single large space. Additionally, the scarcity of resources has limited the construction of hangars, forcing most of the population to seek their own shelter solutions. The absence of communal kitchens has also forced hangar occupants to cook inside, posing a fire hazard, health risks and contributing significantly to roof leaks. These challenges highlight the urgent need for increased resources and support to improve living conditions.

EGYPT

Highlights

- A total of 370,000 Sudanese and 8,504 individuals of other nationalities, totaling some 378,504 people, have crossed into Egypt since the start of the Sudan crisis according to the Government of Egypt.
- The total number of regular daily entries from Sudan for all nationalities increased at an average of 364 in November, compared to 338 in October. The daily number of Sudanese entries increased from 199 to 244 between October and November.
- UNHCR has so far registered some 114,000 new arrivals from Sudan - 90 per cent Sudanese.
- UNHCR commemorated the 16 Days of Activism Against Gender-Based Violence with different awareness-raising events across Egypt including one event attended by 200 refugee women, men and children in Cairo.
- UNHCR highlighted improvements to the digital inclusion of refugee children in Egypt through the Instant Network Schools (INS) joint programme with the Vodafone Foundation in London on 28 November.

Registration and Protection

Registration: November marked the highest number of monthly registration in 2023, with 35,714 refugees and asylum seekers registered, of which 81% are Sudanese. This is a 4% increase from October and a nearly 9-fold increase from the pre-Sudan Situation. Since the start of the conflict, UNHCR has provided pre-registration appointments to 167,301 new arrivals as of 1 December, of whom 113,890 individuals (68%), are fully registered.

Gender-based violence: To commemorate the 16 Days of Activism Against Gender-Based Violence, UNHCR organized a community event attended by 200 refugee women, men and children in Cairo on 30 November. The activity, in collaboration with the Ministry of Youth and Sports and UNFPA, included GBV awareness-raising sessions, sports activities for children, yoga sessions for women, and a bazaar for refugee-women business owners to sell their products. In addition, a panel discussion with women who receive livelihood grants from UNHCR showcased the positive impact of investing in livelihood and other prevention activities. A similar event attended by 150 Sudanese refugees recently arrived in Egypt was organized in Aswan on 28 November. Meanwhile, UNHCR also participated in gender-based violence prevention events in Alexandria and Damietta.

Community-based Protection: UNHCR facilitated three full-day training sessions on disability inclusion and LGBTIQ+ awareness which was attended by 70 frontline UNHCR and partner staff. Among other topics, the training introduced UNHCR's rights-based approach to empowering people with disabilities, and LGBTIQ+ terminology for Arabic speakers.

Infoline: 15,150 inquiries were handled by UNHCR's Infoline last week and registration appointments given to 8,376 individuals. This brings the overall number of people who received registration appointments through the system to 86,947. Following the merging of the Cairo and Alexandria lines and the hiring of additional agents, the average number of calls per day has tripled compared to pre-crisis levels.

Education

The UNHCR's Representative participated in a "Connected Education for All" event, jointly organized by UNHCR and the Vodafone Foundation in London on 28 November. The event focused on the growing education needs of refugees and the importance of innovative solutions and private sector support to address the challenges faced by forcibly displaced students in accessing quality education, especially in the digital era. The Representative highlighted improvements in digital inclusion for refugee children in Egypt, including Sudanese, achieved through the Instant Network Schools (INS) joint programme. Since 2021, INS has supported refugee and host community students and teachers in accessing quality digital education in 48 schools across three Egyptian governorates hosting high refugee populations in Cairo, Giza, and Damietta. Among the six countries where INS operates, Egypt is now the largest, with around 180,000 refugee and host community students. INS supports schools to have an enabling infrastructure, relevant content, digital competencies, and pedagogical support to ensure these tools can be fully utilized in the classroom. Additionally, with five of the schools being powered by solar energy, the UNHCR and the Vodafone Foundation are contributing to the fight against climate change in Egypt.

Livelihoods

In Alexandria, UNHCR and the Bibliotheca Alexandrina organized an entrepreneurship training facilitated by the Micro, Small & Medium Enterprise Development Agency (MSMEDA) that was attended by 30 refugee and Egyptian women. Another training was also delivered to introduce women to digital marketing skills and photography.

Cash Assistance

UNHCR continues to deliver cash assistance to new arrivals from Sudan. In November, UNHCR Egypt provided emergency cash assistance to 2,566 people. Since the onset of the Sudan conflict, UNHCR has identified 45,984 people as eligible for one-off emergency cash assistance. 97% of them have already been assisted (44,325 individuals). UNHCR provides emergency cash assistance to newly arrived Sudanese who fled to Egypt after the conflict in Sudan. Cash assistance is provided once to families who have registered with UNHCR, and to those who are in Aswan and have not yet registered, to support with the most urgent needs. UNHCR conducts rapid needs assessments to inform the eligibility for emergency cash assistance for unregistered Sudanese individuals.

SOUTH SUDAN

Highlights

- As of 3 December, a cumulative number of 420,894 individuals (96,077 households) had arrived in South Sudan, with 13,834 individuals (2,965 households) arriving between 25 November-2 December.
- Since April, 85 per cent of the new arrivals have entered via the Joda/Renk border point. While Sudanese refugees account for 15 per cent, South Sudanese returnees continue to comprise the vast majority (83 per cent) of all new arrivals. Over the past week, 96 per cent of arrivals entered via the Joda/Renk border point and 2 per cent via Abyei.
- Due to the increased insecurity in Sudan, an increase in the number of arrivals was recorded in Renk resulting in 17,400 individuals at the site, most of whom are South Sudanese returnees. Compared to last week, the number of new individuals arriving has increased by 24 percent.

Combined with the halt on the onward movement of refugees, the population at Renk transit centre is stretching the already limited resources and space.

- The water supply levels are around 10 litres per person per day and one latrine serves around 250 individuals.
- Both refugees and returnees are experiencing severe shortages in accessing food resulting in the increased tensions and leading to further protection and security risks at the transit centre.
- The local authorities have also raised concerns regarding a possible increase of tensions and the need for urgent humanitarian action to address especially with regards to access to food, water, and sanitation.

Registration

A total of 59,705 refugees and asylum-seekers have arrived in South Sudan since the onset of the crisis with 53,590 individuals (90 per cent) biometrically registered so far. According to those registered and profiled for registration, the majority of refugees are located in Maban (16,300) and Renk (16,600), over 10,090 in Juba and around 10,700 in Aweil.

In Wedweil, 154 individuals were biometrically registered during the week, accumulating to 5,148 individuals. In Maban, a total of 328 individuals of new arrivals underwent biometric registration, contributing to a cumulative total of 10,666 new arrivals with the majority being women and children (72% or 7,700 individuals).

Protection

At the Joda border point, the increase of individuals arriving has led to people spending more than two nights at the reception site. 5,655 most vulnerable individuals (returnees and refugees) were prioritized for onward transportation. At Renk transit centre, 377 individuals were identified and supported as persons with specific needs. The overcrowding combined with limited access to cash and NFI assistance are mounting to frustrations at the transit centre, including higher rate of criminality. The process of prioritizing persons with specific needs for assistance is causing tensions among the population.

In Maban, UNHCR/ACTED received a total of 572 individuals (183 households) of new arrivals from Blue Nile State in Doro reception centre. 423 persons with specific needs were supported with cash, 30 new child protection cases were reported and a total of 637 individuals received various child protection preventive messages, information about available protection services and referral pathways.

In Bentiu, as part of the 16 Days of Activism campaign, women including returnees were provided with canoes for livelihood activities and in the Rotriak returnee site, a training on fuel efficiency stoves was conducted.

Health and Nutrition

In Renk, 3,951 consultations were conducted at the transit center with acute respiratory infections, malaria and water diarrhea being the main causes. 247 pregnant women received antenatal care during the reporting period and 8 skilled deliveries were conducted. A total of 628 children were vaccinated within the week, this brings the total cumulative of children vaccinated to 17,407. Two mortalities due to tuberculosis and secondary shock to acute water diarrhea were recorded, keeping the daily mortality rate at 0.14/10,000. The lack of essential medication continues among the partners at the transit centre especially related to patients with chronic illnesses. At the Renk transit centre extension site, the construction pace of the clinic and nutrition facilities remains slow.

In Renk, Malakal, Maban and Wedweil 1,988 children under 5 years of age among new arrivals were screened for malnutrition and 112 were identified with moderate or severe acute malnutrition and two were admitted to the stabilization ward in the reporting week. In Renk and Maban, 1,100 children were provided with vitamin A supplementation while 151 children received deworming medication in Renk.

Water and Sanitation

Due to the increase in arrivals, the latrine coverage has worsened in Renk. The person-to-latrines ratio remains significantly below the emergency standard of 1:15 as one latrine serves currently 250 individuals. At the Joda border and Renk transit centre, the increased population has led to the practice of open defecation as WASH services are insufficient, causing increasing concerns for health outbreaks. Urgent action is still needed to boost the water storage capacity by at least 60,000 liters to match with the population growth.

In Maban, 21 emergency family shared latrines and 09 bathing showers were constructed at Doro camp and an additional water point was also installed at Doro Reception center.

Shelter and CRIs

At Renk transit centre, the 29 communal shelters (out of a total of 59 to be constructed) and 21 family emergency shelters are at full capacity. There is dire need for additional shelter especially for those at heightened risk. Many continue to stay under makeshift shelters using blankets, mosquito nets and clothes both inside and around the transit. ACTED is working construct nine family emergency shelters for persons at heightened risk. Targeted distribution of CRIs, such as blankets, mosquito nets and buckets, was conducted for 105 vulnerable individuals and additionally, 35 children with specific needs received NFI items, including buckets, towels, soap and blankets.

In Renk, the ongoing construction at the transit centre extension site is progressing with a plan to construct a total of 59 communal shelters with available resources which will accommodate a maximum of 2,000 individuals. The site has enough space for construction of an additional 69 shelters which would enable a total of 5,000 individuals be accommodated in the extension site in case additional funding is secured.

In Maban, significant progress has achieved with regards to the construction and extension of Doro Reception center.

Response Plans and Funding Situation

Revised Regional Refugee Response Plan (RRP) – May-December 2023

- On 4 September, UNHCR and 64 partner organisations published a revised inter-agency [Sudan Emergency Regional Refugee Response Plan – May to December 2023](#), which is appealing for **USD 1,004,761,770** to provide essential aid and protection to over 1.8 million people expected to arrive in five neighbouring countries by the end of 2023, fleeing ongoing conflict in Sudan. As of 4 December, total funding of USD 375 million has been recorded or **37%** of the funding requirements ([Refugee Funding Tracker](#)).
- RRP Summary: [Sudan Regional Refugee Response Plan \(May-December 2023\) – At a Glance](#).

Humanitarian Response Plan (HRP) – May-December 2023

- The revised inter-agency [Humanitarian Response Plan \(HRP\) for Sudan \(May-December 2023\)](#) requires **USD 2.57 billion** to help 18 million people. As of 27 November, the total funding for the HRP reached some USD 980.5 million or **38.2%** of the requirements ([OCHA FTS](#)).

Revised UNHCR Supplementary Appeal – May-December 2023

- On 4 September, UNHCR issued a revised [Sudan Emergency Supplementary Appeal \(May-December 2023\)](#) to reflect increased needs of **USD 506,528,613**. As of 4 December, the total available funding for the appeal was USD 166.3 million or **33%** of the funding requirements ([Sudan Situation Funding Update](#)).

Resources

- [UNHCR Ethiopia – Protection Brief - Sudan Situation - October 2023](#)
- [UNHCR Sudan – IDP Response Factsheet November 2023](#)
- [Sudan Situation - UNHCR Health and Nutrition Update - October 2023](#)
- UNHCR's [Operational Data Portal \(ODP\) for the Sudan Situation](#) provides daily updates on the refugee and returnee arrivals in Sudan's neighbouring countries.
- [UNHCR and IOM Joint Dashboard](#) of arrivals to South Sudan, including data on returnee intentions, onward movements, and numbers and locations of returnees in and around Renk.
- [UNHCR Global Focus Sudan Operation page](#)
- [UNHCR Sudan Emergency website](#)
- UNHCR's HELP site for Refugees and Asylum-Seekers in Sudan provides information to individuals seeking information and support inside Sudan (in [English](#) and [Arabic](#)).

Contacts: Kabami Kalumiya – Reporting Officer, RB EHAGL (kalumiya@unhcr.org); Joyce Munyao-Mbithi – Senior Donor Relations Officer, RB EHAGL (munyao@unhcr.org);