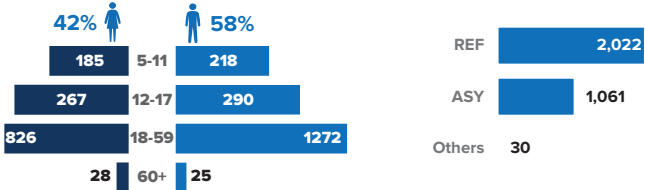


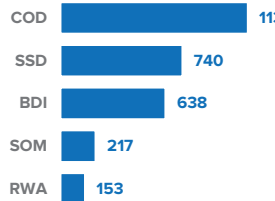
CUMULATIVE CROSS BORDER MOVEMENTS KEY FIGURES*



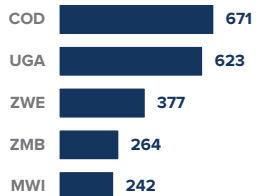
AGES, GENDER AND LEGAL STATUS OF MOVERS **



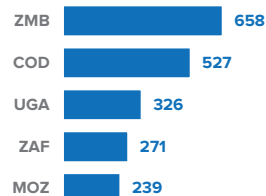
Top 5: Nationality



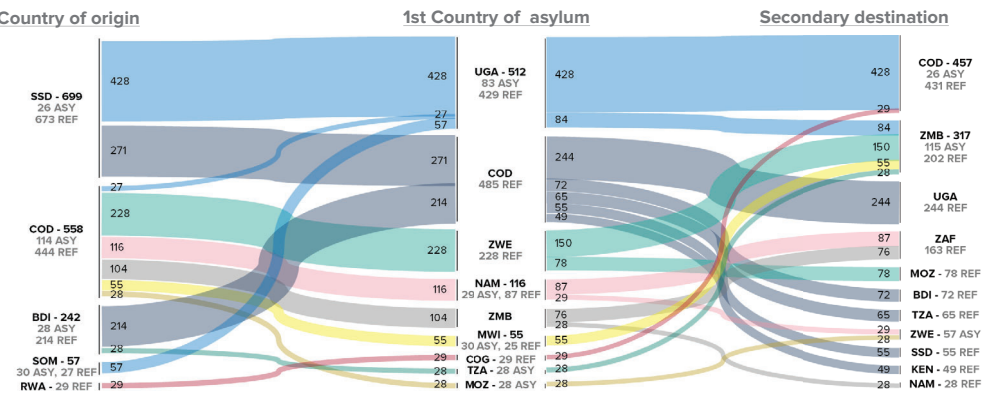
Top 5: 1st Country of Asylum



Top 5: 2nd Country of Asylum



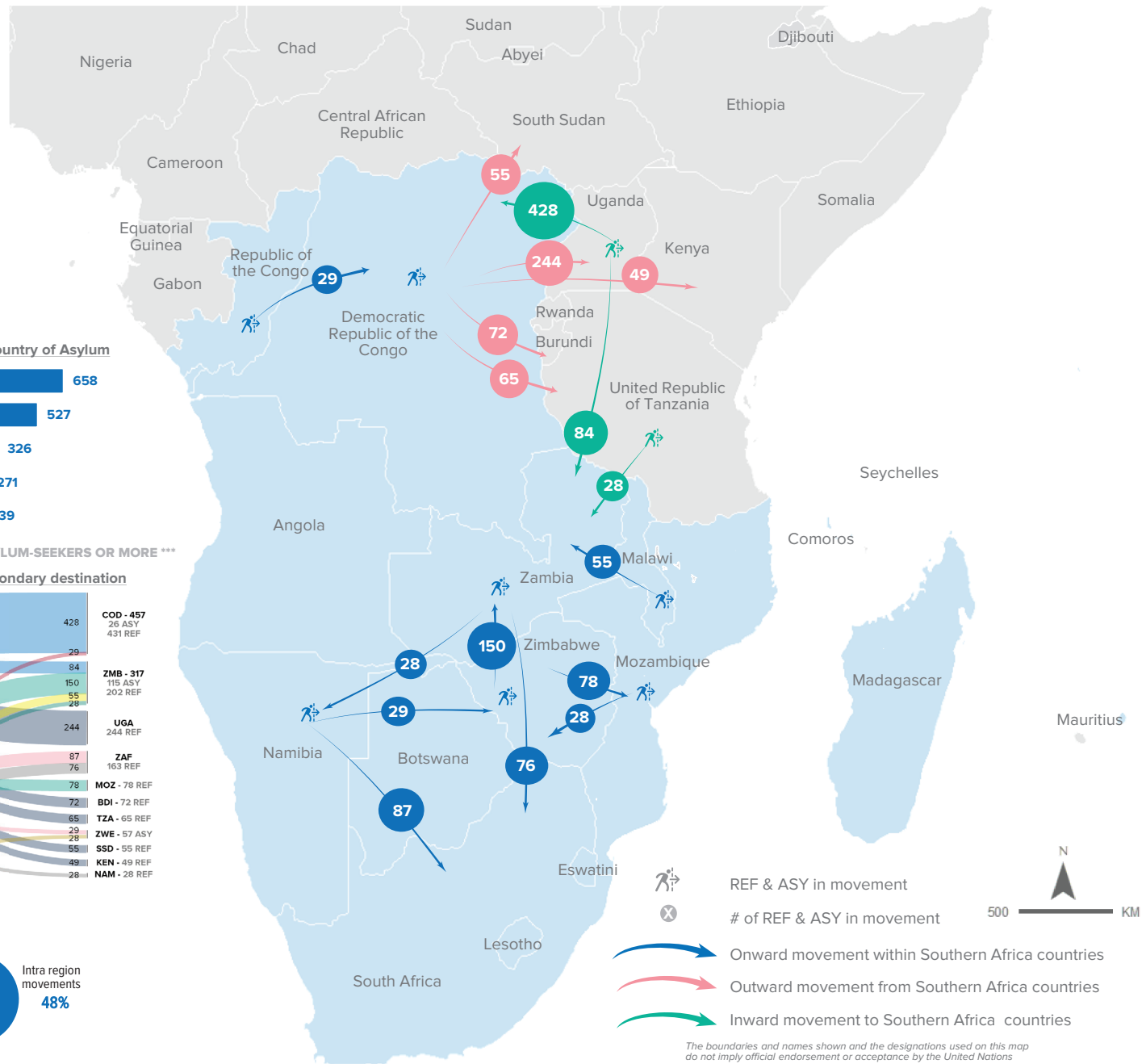
CUMULATIVE CROSS BORDER MOVEMENTS WHERE THE FLOW INVOLVED 25 REFUGEES AND ASYLUM-SEEKERS OR MORE ***



CUMULATIVE CROSS BORDER MOVEMENTS TREND PER YEAR AND PROPORTIONS SINCE 2019



MAP OF CUMULATIVE CROSS BORDER MOVEMENTS WHERE THE FLOW INVOLVED 25 REFUGEES AND ASYLUM-SEEKERS OR MORE



* Figures have been revised in June by removing individuals found in VolRep and Data Transfer Request.
** REF = Refugee, ASY = Asylum-Seeker, OOC = Other person of concern

*** The flows shown are restricted only to movements of a minimum group people, therefore the totals is different from the overall movements of the month due to the exclusion. In case of the same country of origin and first country of asylum, due to the change of nationality of some PoCs, country of origin are replaced with the previous nationality. All countries were named according to the ISO 3 Codes. BDI = Burundi, COD = Democratic Republic of the Congo, COG = Republic of the Congo, SSD = South Sudan, KEN = Kenya, UGA = Uganda, MWI = Malawi, MOZ = Mozambique, NAM = Namibia, TZA = Tanzania, ZMB = Zambia, ZWE = Zimbabwe

Data sources: UNHCR PRIMES. For more information or to contribute, please contact UNHCR RB SA DIMA (rsarbdima@unhcr.org)