

**Population**  
Refugees and asylum-seekers

Individuals: **94,778**  
Households: **22,264**

**Settlement**

Rwamwanja

*On average two performance indicators are measured per sector against the annual 2023 RRP targets*

**UCRRP Partners: 25**

GOV'T **03** UN Agencies **02**  
NNGOs **06** RLOs **2** INGOs **12**

Sector of Intervention	Indicator	Achieved	Target
------------------------	-----------	----------	--------

**Education**



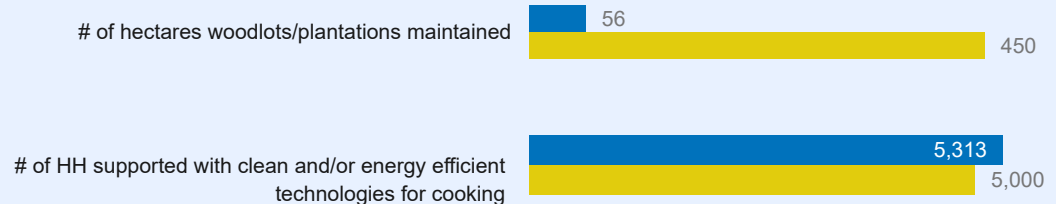
**Health & Nutrition**



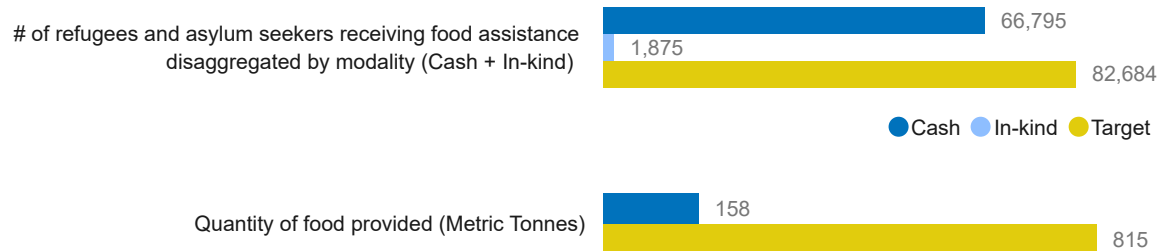
**WASH**



**Energy & Environment**



**Food Security**



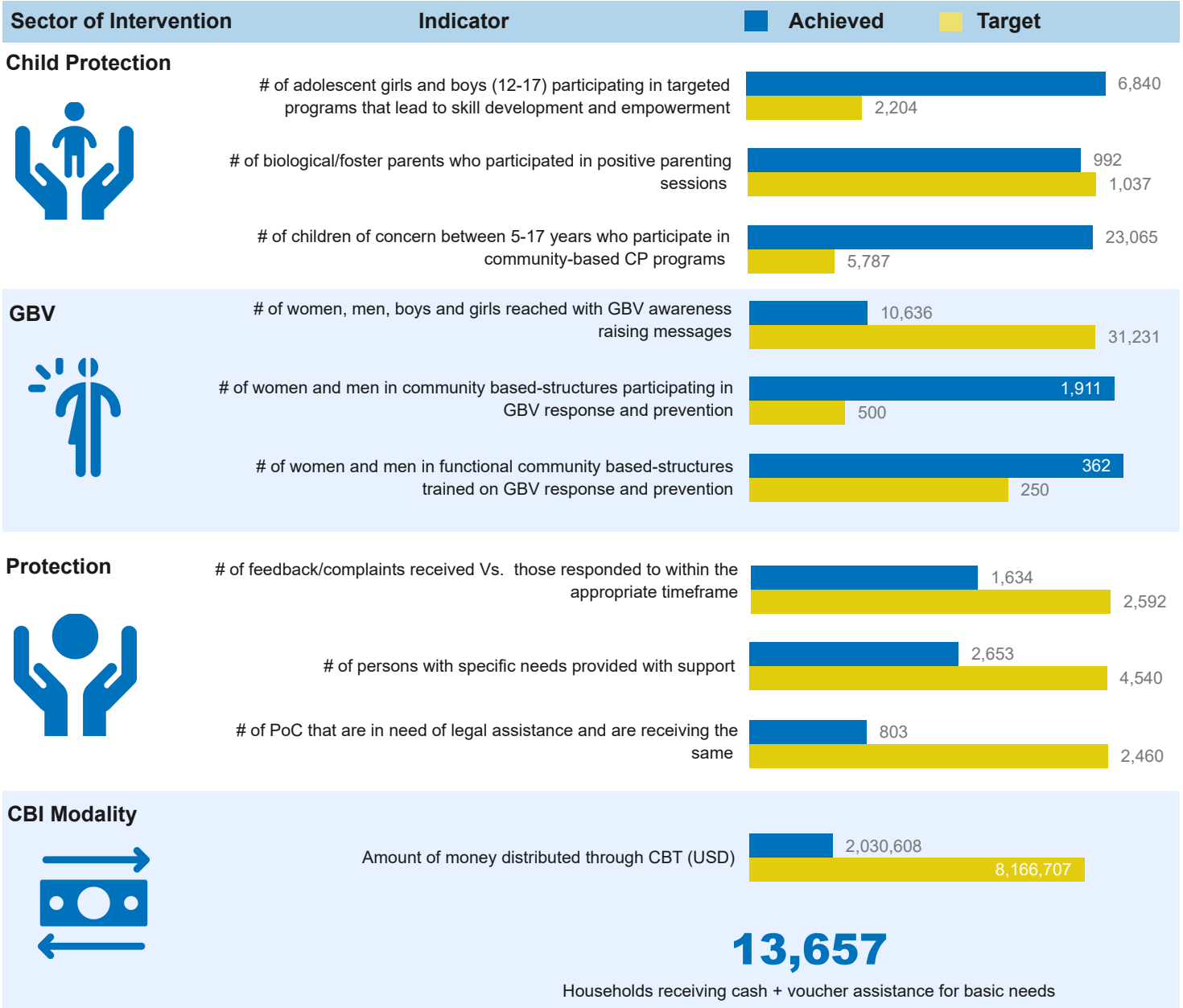
**Livelihoods & Resilience**



# of men, women, boys and girls trained on financial literacy

815	14,768
-----	--------

**0** Acres of arable land accessed by refugees  
**768** HH receiving emergency livelihood support



### List of Partners who reported for Q4 2023, UN Agencies and Government

#### National NGOs

AAID, AWYAD, Nsamizi, SOS, TPO & TTR

#### Refugee Led Organizations (RLOs)

RIC & RWEC

#### International NGOs

AIRD, Alight, AVSI, COHERE, DAI, FCA, FRC, HI, LWF, MTI, SCI & WCC

#### UN Agencies

UNHCR & WFP

#### Government

OPM, NARO & Kamwenge DLG