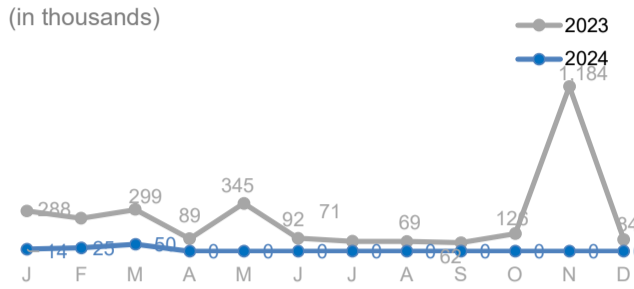


View the interactive dashboard here: <http://prmn-somalia.unhcr.org/>

TOTAL DISPLACEMENTS

50,000 in March
88,000 (Jan - Mar 2024)
2,945,000 (Jan - Dec 2023)

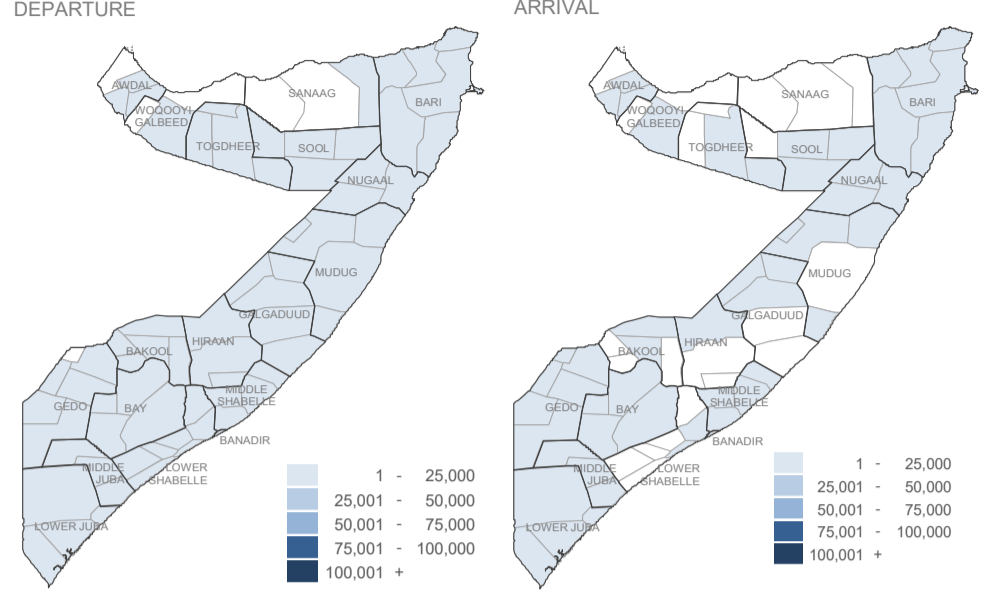
The UNHCR-led PRMN implemented in partnership with NRC reported 50,000 internal displacements in the month of March 2024. Out of these, 37,000 were caused by conflict or insecurity, 0 displacement were due to drought, 6,000 were due to floods and 6,000 were displaced due to other reasons



BY REGION (Jan - Mar 2024)

| DEP | ARR |
|-----------------|--------|
| Awdal | 170 |
| Bakool | 5,980 |
| Banadir | 280 |
| Bari | 2,700 |
| Bay | 22,330 |
| Galgaduud | 800 |
| Gedo | 7,850 |
| Hiraan | 4,410 |
| Lower Juba | 6,910 |
| Lower Shabelle | 7,720 |
| Middle Juba | 9,470 |
| Middle Shabelle | 2,760 |
| Mudug | 13,980 |
| Nugaal | 1,970 |
| Sanaag | 160 |
| Sool | 460 |
| Togdheer | 500 |
| Woq. Galbeed | 40 |

BY DISTRICT (Jan - Mar 2024)

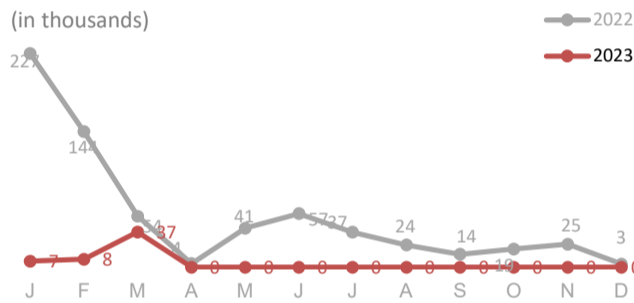


CONFLICT / INSECURITY DISPLACEMENTS

37,000 in March
52,000 (Jan - Mar 2024)
654,000 (Jan - Dec 2023)

Major displacements Arrival in March due to Conflict/Insecurity occurred in Galgaduud (11,860) and Bay (11,540) regions.

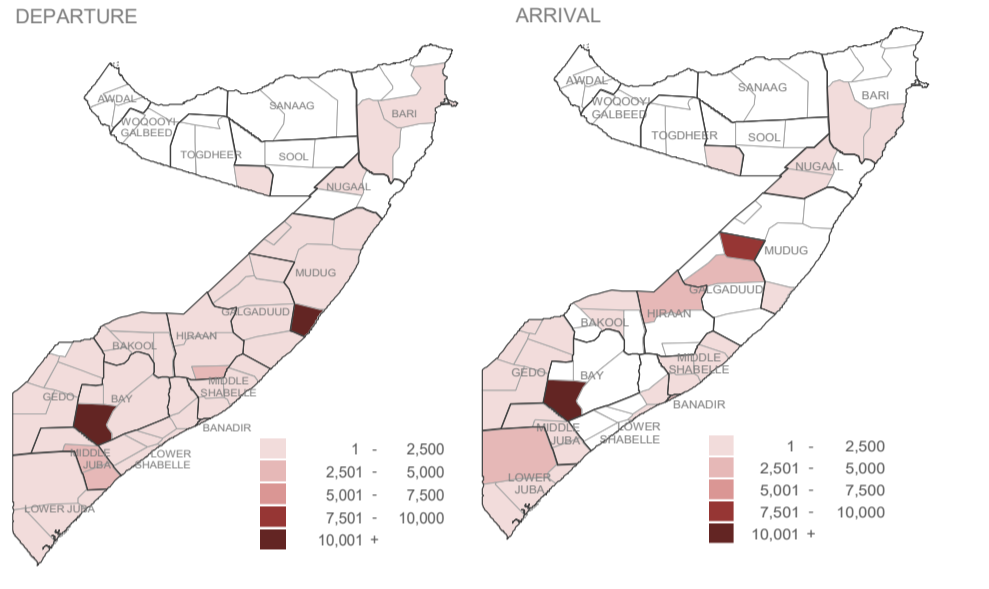
Major displacements Departure in March due to Conflict/Insecurity occurred in Bay (12,950) and Mudug (12,340) regions



BY REGION (Jan - Mar 2024)

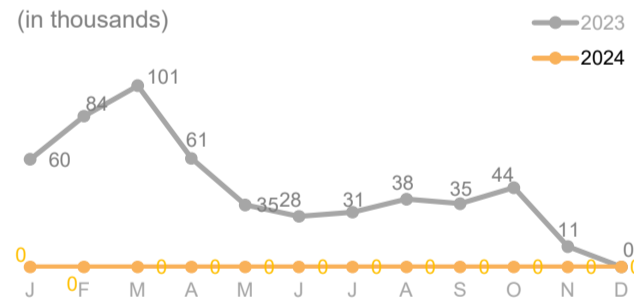
| DEP | ARR |
|-----------------|--------|
| Awdal | 90 |
| Bakool | 2,540 |
| Banadir | 140 |
| Bari | 320 |
| Bay | 14,370 |
| Galgaduud | 580 |
| Gedo | 720 |
| Hiraan | 3,930 |
| Lower Juba | 4,920 |
| Lower Shabelle | 3,000 |
| Middle Juba | 7,360 |
| Middle Shabelle | 1,500 |
| Mudug | 12,840 |
| Nugaal | 40 |
| Sanaag | 0 |
| Sool | 0 |
| Togdheer | 70 |
| Woq. Galbeed | 60 |

BY DISTRICT (Jan - Mar 2024)



DROUGHT RELATED DISPLACEMENTS

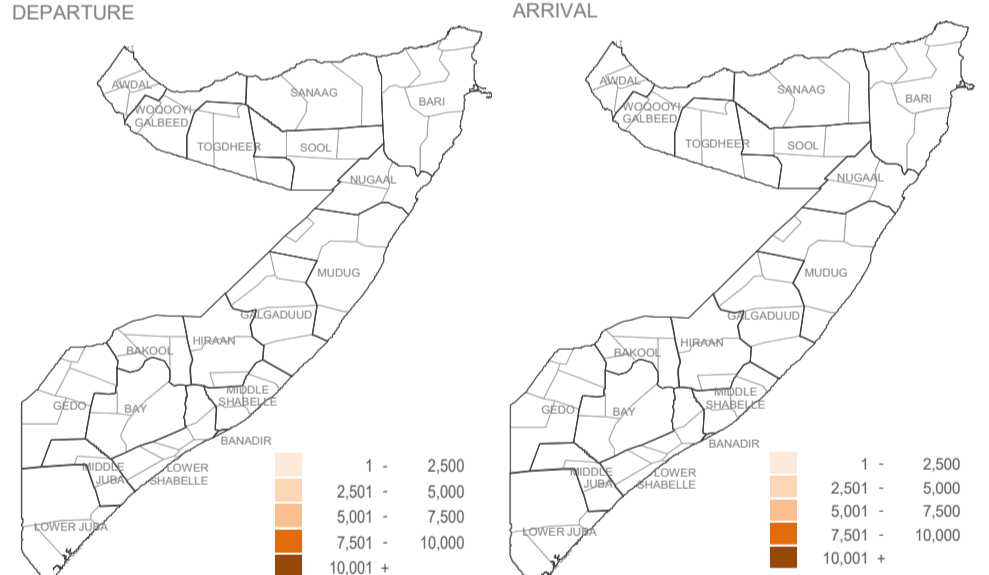
0 in March
0 (Jan - Mar 2024)
529,000 (Jan - Dec 2023)



BY REGION (Jan - Mar 2024)

| DEP | ARR |
|-----------------|-----|
| Awdal | 0 |
| Bakool | 0 |
| Banadir | 0 |
| Bari | 0 |
| Bay | 0 |
| Galgaduud | 0 |
| Gedo | 0 |
| Hiraan | 0 |
| Lower Juba | 0 |
| Lower Shabelle | 0 |
| Middle Juba | 0 |
| Middle Shabelle | 0 |
| Mudug | 0 |
| Nugaal | 0 |
| Sanaag | 0 |
| Sool | 0 |
| Togdheer | 0 |
| Woq. Galbeed | 0 |

BY DISTRICT (Jan - Mar 2024)

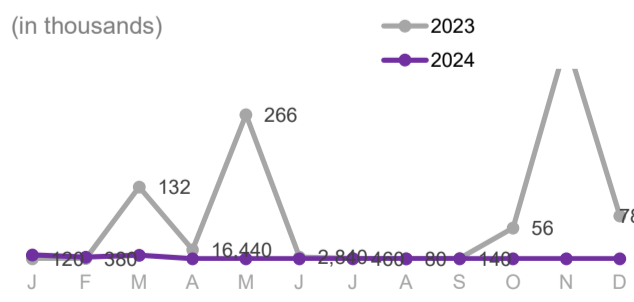


FLOOD DISPLACEMENTS

6,000 in March
16,000 (Jan - Mar 2024)
1,694,100 (Jan - Dec 2023)

The highest displacements Arrival in March due to floods were recorded in Bay (2,890) and Gedo (2,620) regions.

The highest displacements departure in March due to floods were recorded in Gedo (2,130) and Middle Juba (2,030) regions.



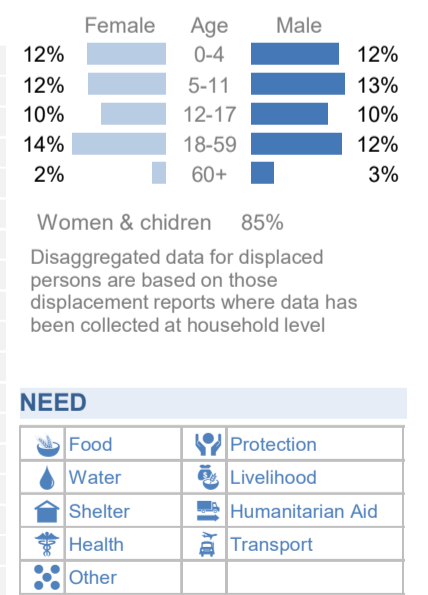
BY REGION (Jan - Mar 2024)

| DEP | ARR |
|-----------------|-------|
| Awdal | 0 |
| Bakool | 720 |
| Banadir | 1,630 |
| Bari | 40 |
| Bay | 5,290 |
| Galgaduud | 0 |
| Gedo | 4,630 |
| Hiraan | 120 |
| Lower Juba | 1,730 |
| Lower Shabelle | 980 |
| Middle Juba | 1,650 |
| Middle Shabelle | 1,130 |
| Mudug | 0 |
| Nugaal | 0 |
| Sanaag | 0 |
| Sool | 0 |
| Togdheer | 0 |
| Woq. Galbeed | 0 |

PRIORITY NEED ON ARRIVAL (March in %)

| Region | Food | Water | Shelter | Health | Protection | Transport | Other |
|-----------------|------|-------|---------|--------|------------|-----------|-------|
| Awdal | 0 | 0 | 0 | 0 | 0 | 0 | 0 |
| Bakool | 99 | 0 | 0 | 0 | 0 | 0 | 1 |
| Banadir | 42 | 11 | 39 | 7 | 0 | 0 | 0 |
| Bari | 48 | 0 | 24 | 27 | 0 | 0 | 0 |
| Bay | 100 | 0 | 0 | 0 | 0 | 0 | 0 |
| Galgaduud | 100 | 0 | 0 | 0 | 0 | 0 | 0 |
| Gedo | 99 | 0 | 0 | 0 | 0 | 0 | 0 |
| Hiraan | 0 | 0 | 0 | 100 | 0 | 0 | 0 |
| Lower Juba | 70 | 11 | 13 | 5 | 0 | 0 | 0 |
| Lower Shabelle | 3 | 0 | 2 | 94 | 0 | 0 | 1 |
| Middle Juba | 91 | 9 | 0 | 0 | 0 | 0 | 0 |
| Middle Shabelle | 2 | 0 | 95 | 3 | 0 | 0 | 0 |
| Mudug | 36 | 0 | 48 | 15 | 0 | 0 | 0 |
| Nugaal | 39 | 21 | 36 | 4 | 0 | 0 | 0 |
| Sanaag | 0 | 0 | 0 | 0 | 0 | 0 | 0 |
| Sool | 60 | 40 | 0 | 0 | 0 | 0 | 0 |
| Togdheer | 69 | 0 | 31 | 0 | 0 | 0 | 0 |
| Woq. Galbeed | 56 | 14 | 30 | 0 | 0 | 0 | 0 |

AGE & GENDER (2024)



About PRMN

The PRMN (Protection & Return Monitoring Network) is a UNHCR-led project which identifies and reports on displacements (including returns) of populations in Somalia. The network also identifies and reports on protection risks and incidents underlying such movements. Only figures collected by PRMN are reported above. Not all displacements in Somalia are captured. This dashboard should be read in conjunction with the Notes on PRMN Methodology (<https://data2.unhcr.org/en/documents/details/53888>) which outline the approach and certain limitations. The figures shown are for numbers of individuals and are based on interviews with key informants and/or displaced households at destination (unless otherwise noted). Further information and datasets available on request use contact below.



UNHCR is grateful for the generous contributions of donors who have directly contributed to the UNHCR Somalia operation in 2024

