

Total Arrivals from Ethiopia



2,633

Individuals Registered
Source: UNHCR, COR
As of 31 March 2024



1,087

Households

Introduction:

Babikri settlement was opened on 28 November 2021 to accommodate refugees fleeing Ethiopia due to armed conflict in November 2020.

Since the outbreak of conflict in Sudan in April 2023, the camp has received refugees and asylum seekers secondarily displaced from Khartoum, Al Jazirah and other parts of the country in addition to the Ethiopian refugee caseload. These include those who spontaneously arrived in the camp after fleeing conflict-affected areas and those who relocated with the support of UNHCR, the Commission for Refugees and other partners.

As of end March 2024, the settlement accommodates 2,633 refugees (including secondarily displaced refugees), all of whom are biometrically registered and provided with assistance. The dashboard below presents the population profile for Babikri Settlement:

Persons With Specific Needs



163

Individuals



62

Unaccompanied/Separated Children

Country of Origin

2,536

Ethiopians

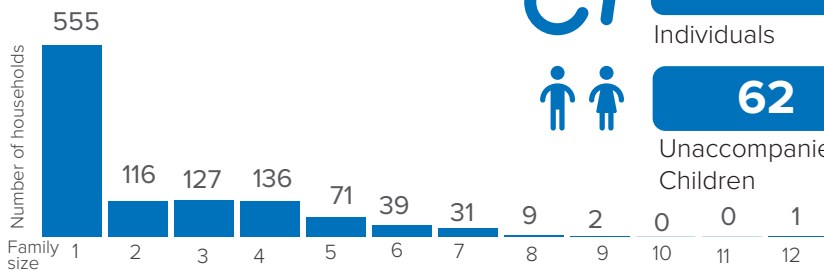
96

DRC

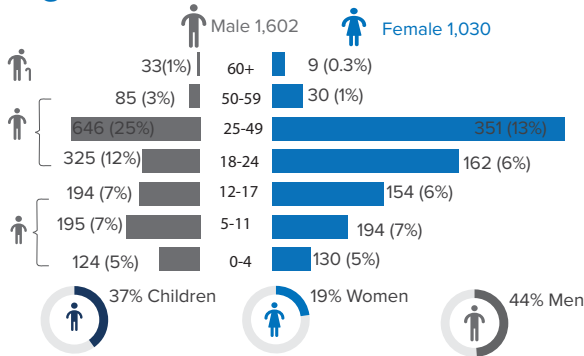
1

Eritrean

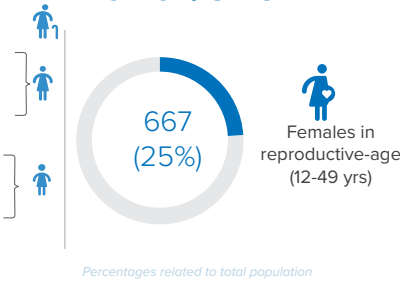
Family Size



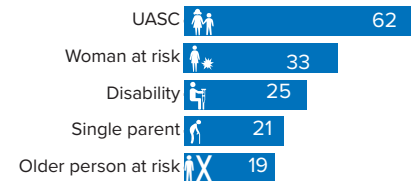
Age-Gender Breakdown



Reproductive-Age Women/Girls

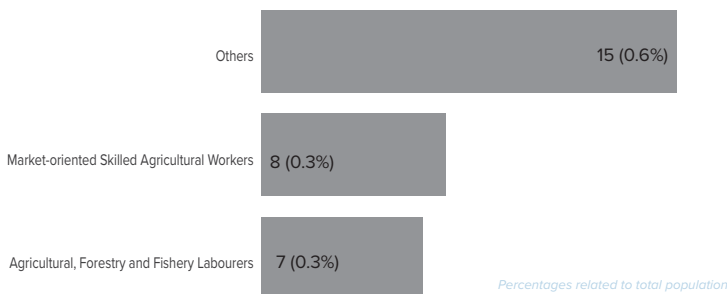


Specific Needs (top 5)



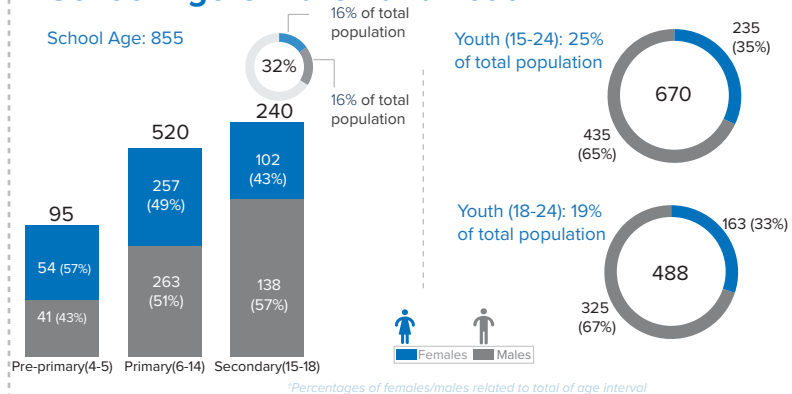
*Unaccompanied or separated child
Source: ProGres v4/Rapp

Occupation

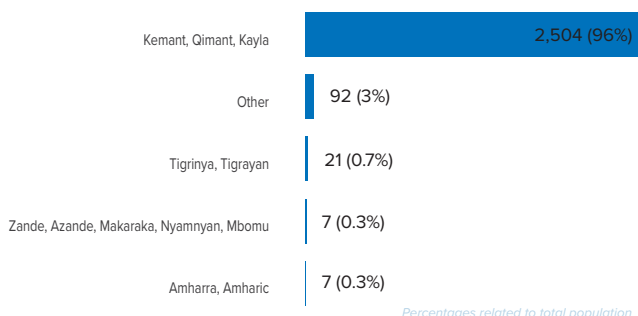


*Occupation and skills of population aged 18 and above

School Age Children and Youth



Ethnicity (Top 5)



Top 3 Areas of Origin (Ethiopia Admin 3)

