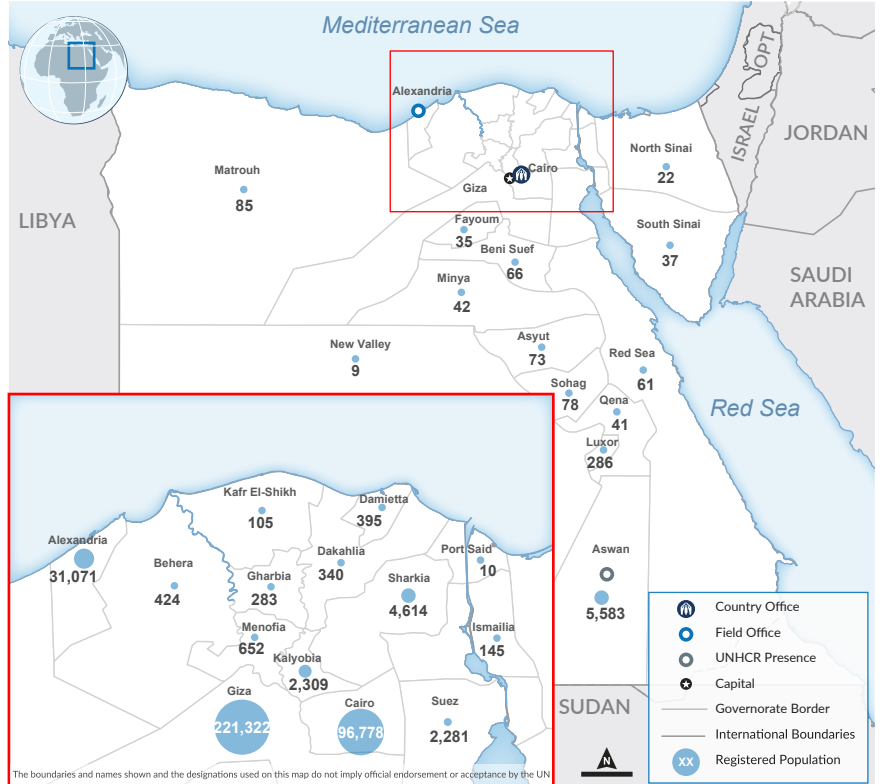
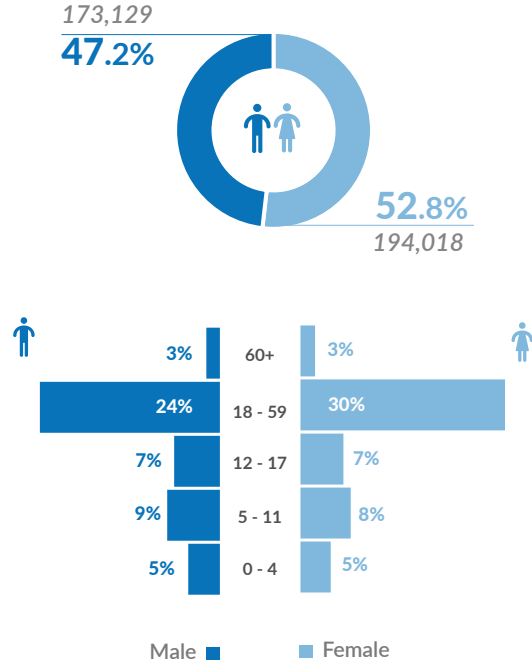
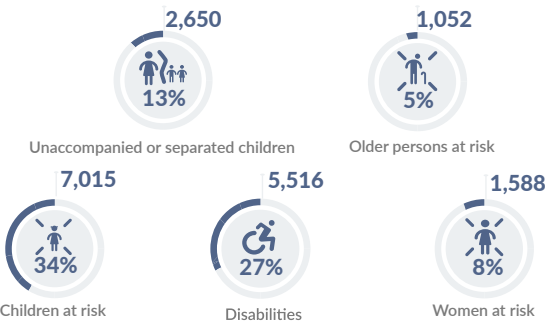




Age & Gender of Registered Population



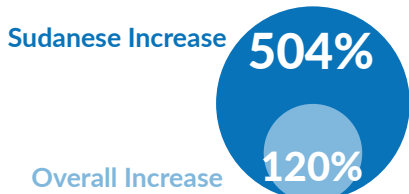
Persons with Specific Needs*



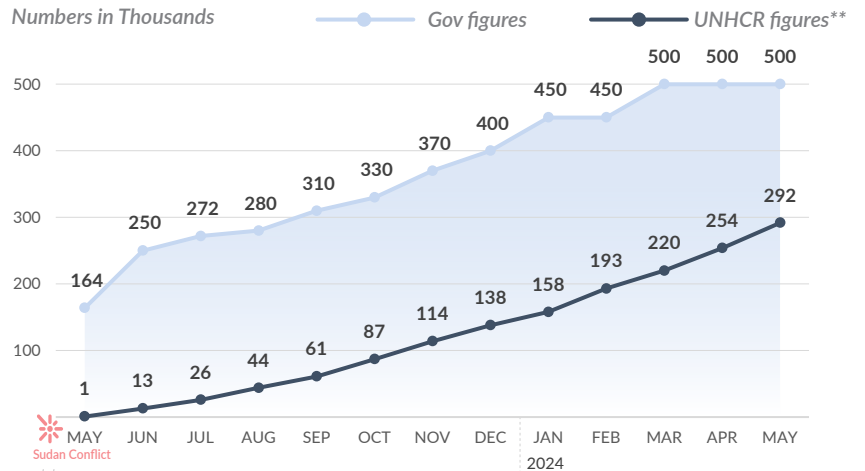
*Individuals who may face particular vulnerabilities and barriers to access services and protection, due to factors such as age, disability, health conditions, or other vulnerabilities. For more information please click on the link [here](#)

Population Growth

Percentage growth in Sudanese refugee numbers versus all nationalities between 31 March 2023 (pre Sudan crisis) and 31 May 2024.



Arrivals Trend in Egypt: Comparing Figures between UNHCR and Government



** This figure represents the registered individuals who arrived from Sudan and may include inactive and closed cases.

UNHCR is grateful for the contributions from its donors

