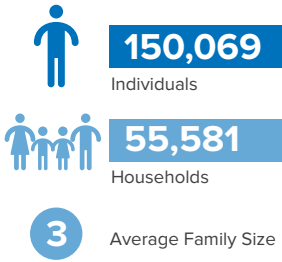


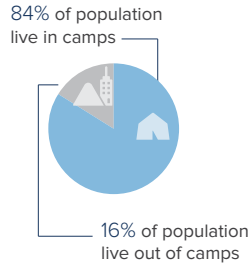
Eritrean Refugees Overview in Sudan

as of 30 June 2024

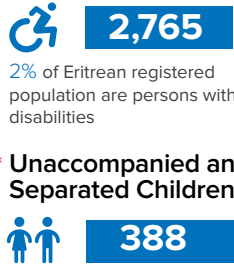
Eritrean Refugees and Asylum-seekers



Population Distribution



Persons With Disabilities



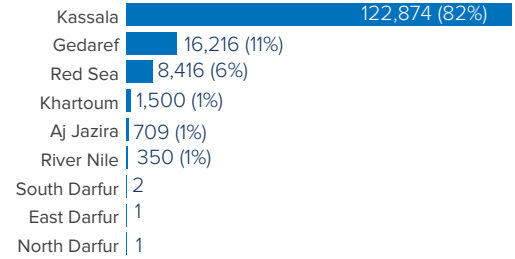
* **Unaccompanied and Separated Children¹**



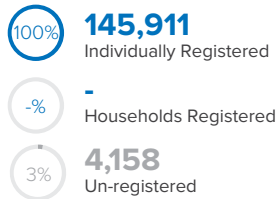
Despite the ongoing conflict that began in April 2023, Sudan continues to host a substantial number of refugees, totaling 909,325 as of June 2024, Eritrean refugees represent (16.5%) of this total population.

The conflict has also led to internal displacement, with 239,687 refugees self-relocating within Sudan, primarily moving from Khartoum to other states. In terms of living conditions of the Eritrean refugees, 84% of the refugees are accommodated in camps, while the remaining 16% live outside of these facilities. The refugee population is almost evenly split in terms of gender, with females accounting for 51% and males making up the remaining 49%.

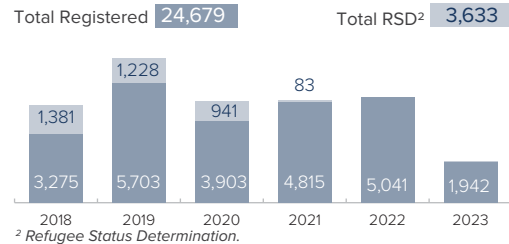
Eritrean Refugees and Asylum-seekers Per State



Registration Status

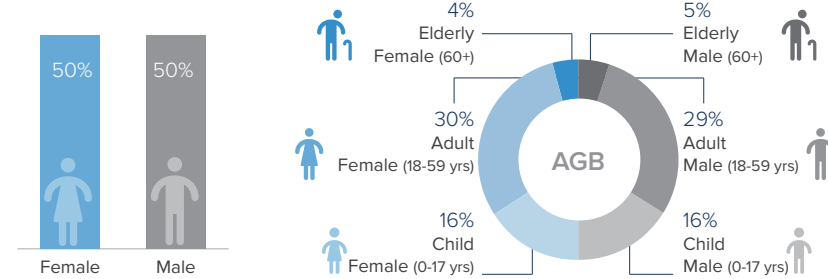


Registration Statistics Since 2018



² Refugee Status Determination.

Age-gender Breakdown³

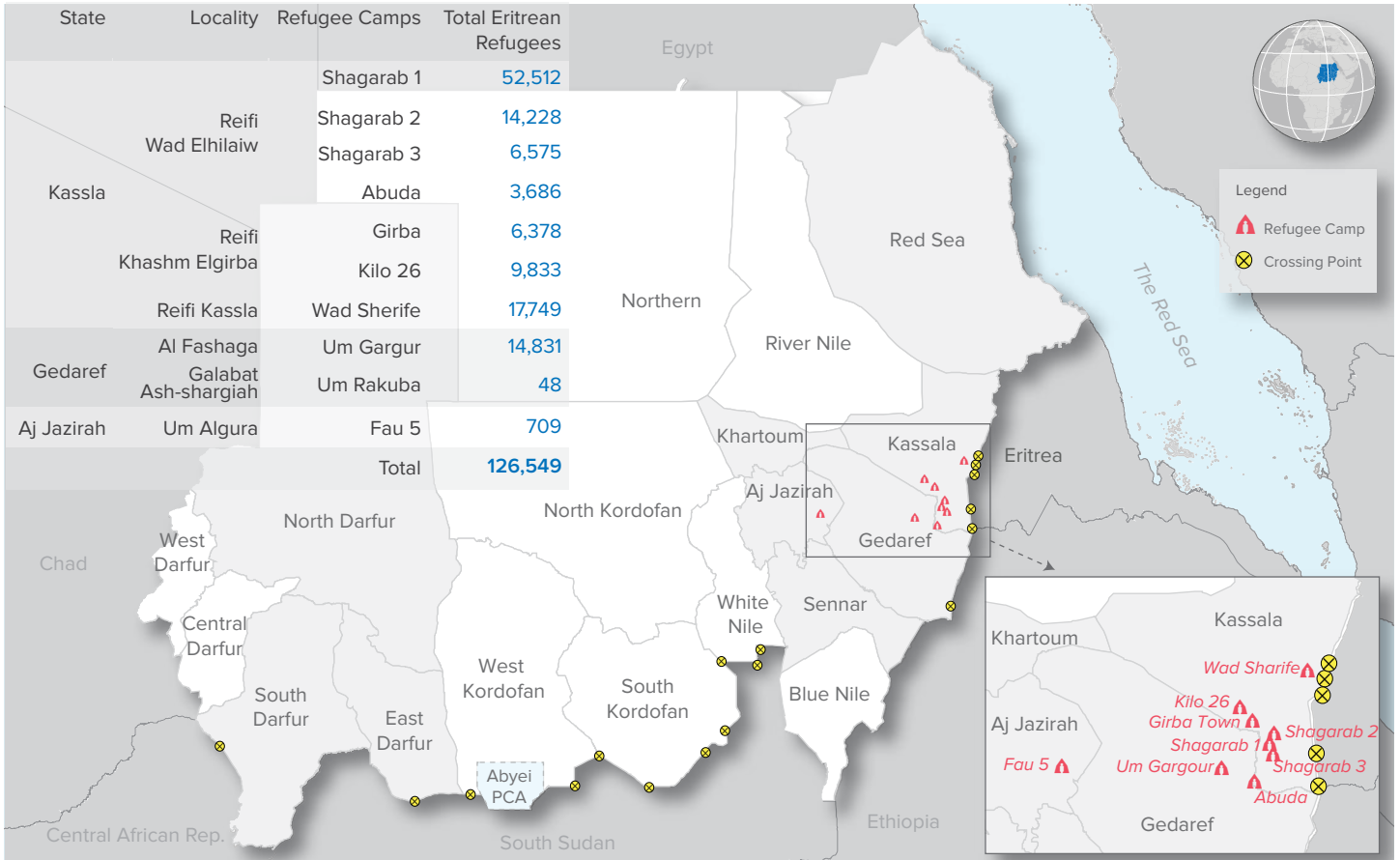
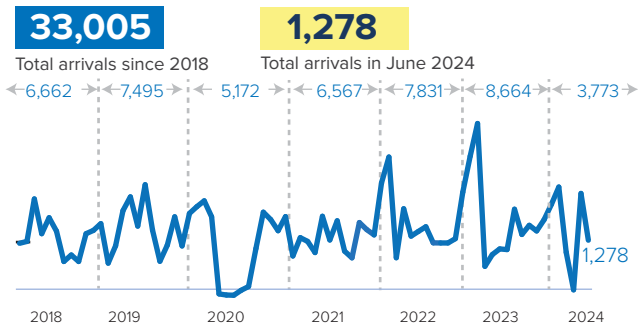


³ Population distribution statistics are based on registered individuals only.

* Registration team conducted verification/revision exercise of UASC figures, all cases exceed 18 year old been excluded.

Sources: UNHCR, Commission of Refugees (CoR), UNICEF

New Arrivals Trends (2018 - 2024)



The boundaries and names shown and the designations used on this map do not imply official endorsement or acceptance by the United Nations.

Abyei region: Final status of the Abyei area is not yet determined.

