

## Total Arrivals from Ethiopia


**16,902**

 Individuals Registered  
 Source: UNHCR, COR  
 As of 30 June 2024

**7,661**

Households

## Introduction:

Um Rakuba camp was opened on 12 November 2020 to accommodate refugees fleeing Ethiopia due to armed conflict in November 2020. Since the outbreak of conflict in Sudan in April 2023, the camp has received refugees and asylum seekers secondarily displaced from Khartoum, Al Jazirah and other parts of the country in addition to the Ethiopian refugee caseload. These include those who spontaneously arrived in the camp after fleeing conflict-affected areas and those who relocated with the support of UNHCR, the Commission for Refugees and other partners.

As of end of June 2024, the camp accommodates 16,902 refugees (including secondarily displaced refugees), all of whom are biometrically registered and provided with assistance. The dashboard below presents the population profile for Um Rakuba camp:

## Persons with Specific Needs


**1,802**

Individuals


**167**

 Unaccompanied/Separated  
 Children

## Country of Origin

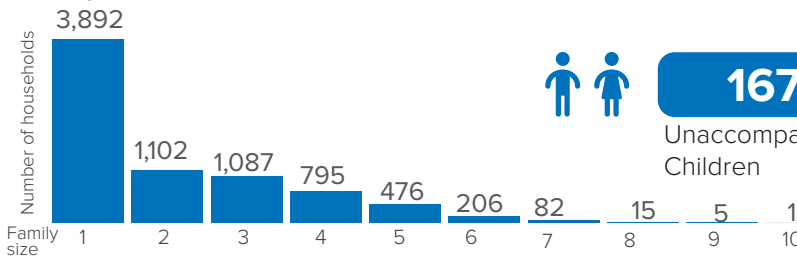
**16,873**

Ethiopians

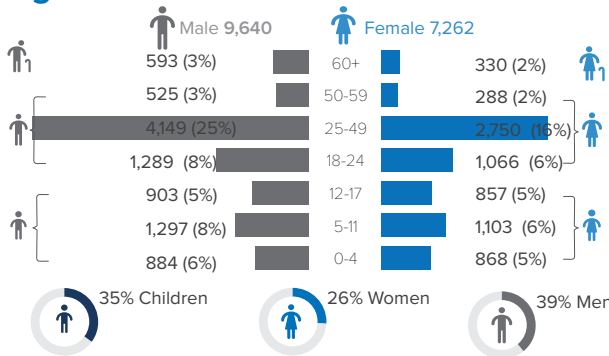
**29**

Eritreans

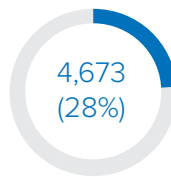
## Family Size



## Age-Gender Breakdown

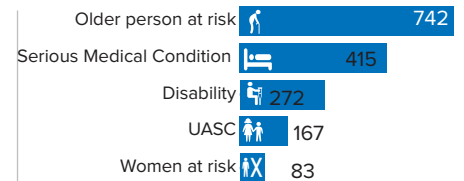


## Reproductive-Age Women/Girls

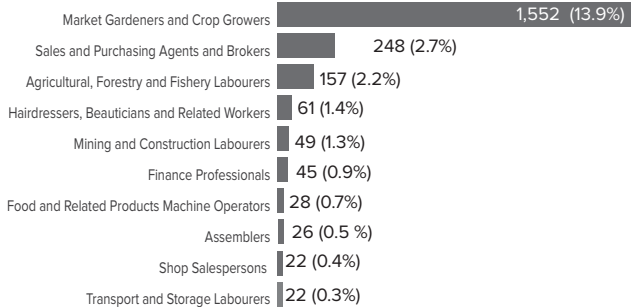

 Females in  
 reproductive-age  
 (12-49 yrs)

Percentages related to total population

## Specific Needs (Top 5)


 \*UASC: Unaccompanied or separated child  
 Source: ProGres v4/Rapp

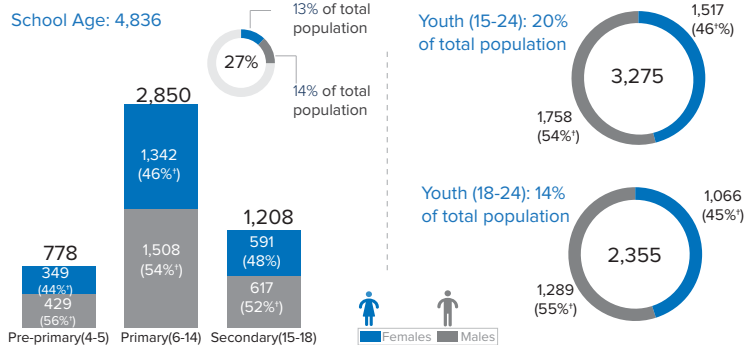
## Occupation (Top 10)



Percentages related to total population

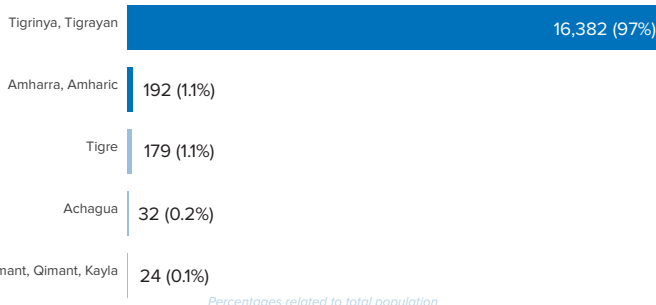
\*Occupation and skills of population aged 18 and above

## School Age Children and Youth



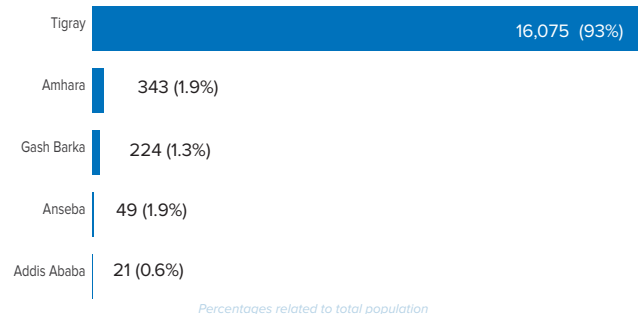
Percentages of females/males related to total of age interval

## Ethnicity (Top 5)



Percentages related to total population

## Top 5 Areas of Origin (Ethiopia Admin 3)



Percentages related to total population

