

On 25 March 2022, UNHCR started a financial assistance program for vulnerable Ukrainian refugees in close coordination with the Moldovan Government and in partnership with Catholic Relief Services, Diaconia, and Caritas Moldova. The transfer value is based on the Minimum Expenditure Basket.

Cash-based interventions are a cost-effective and efficient method for providing aid in areas with functional markets, more importantly is the preferred modality of assistance by refugees. Financial assistance can address diverse needs, mitigate protection risks, and empower refugees to make their own choices on how to allocate and fulfill their needs, preserving their dignity.

Cash-based interventions boost local economies, foster financial inclusion, and sustainable outcomes through a rights-based approach.




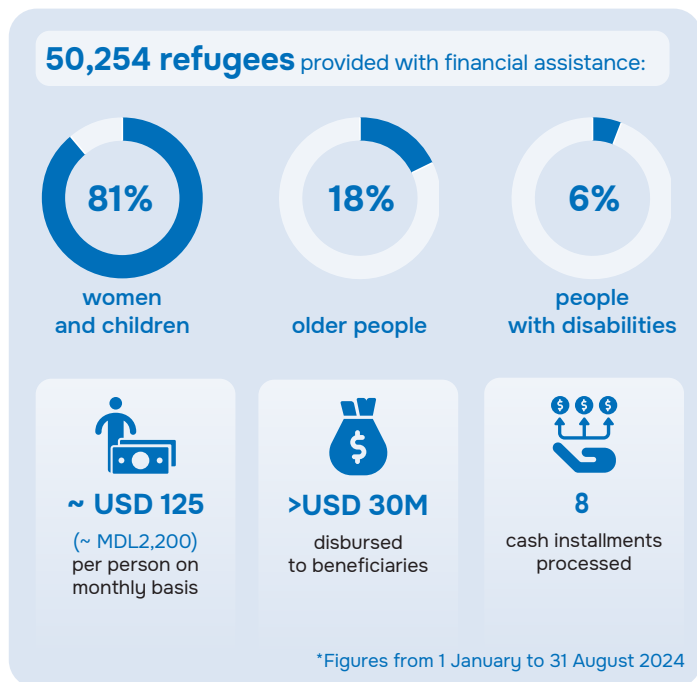
UNHCR provides cash assistance for refugees from Ukraine to address refugees' basic needs in a safe and dignified manner.

## Targeted cash assistance

UNHCR conducted a household vulnerability assessment for refugees in Moldova receiving cash assistance to ensure support reaches those most in need. The program helps refugees cover essential expenses like food and shelter, promoting dignity and autonomy. The assessment found that 66% of approximately 7,900 households are extremely, highly, or moderately vulnerable. 58% older, 31% single parents, 46% persons with serious health condition, 36% persons with disabilities, 10% persons with chronic disease.

A reconsideration mechanism was introduced for refugees disputing decisions or with changing circumstances. In the first three weeks, 1,900 reconsideration applications were received, and 749 cases were reviewed, with 66% confirmed ineligible, 28% sent for reassessment, and 6% referred for protection interviews, including 21 cases for immediate re-inclusion.

 During the cold season, UNHCR provides additional winter financial support (November to March) with an amount of USD 45 (MDL 800) per household on a monthly basis. The transfer value is additionally based on the Government's winter assistance programs.




## Financial assistance in 3 steps:




1 Refugees can approach any Registration Centre for Financial Assistance to make an appointment, or call the Cash Hotline to request a home visit. Appointments will be scheduled within 5 days of the request being received.

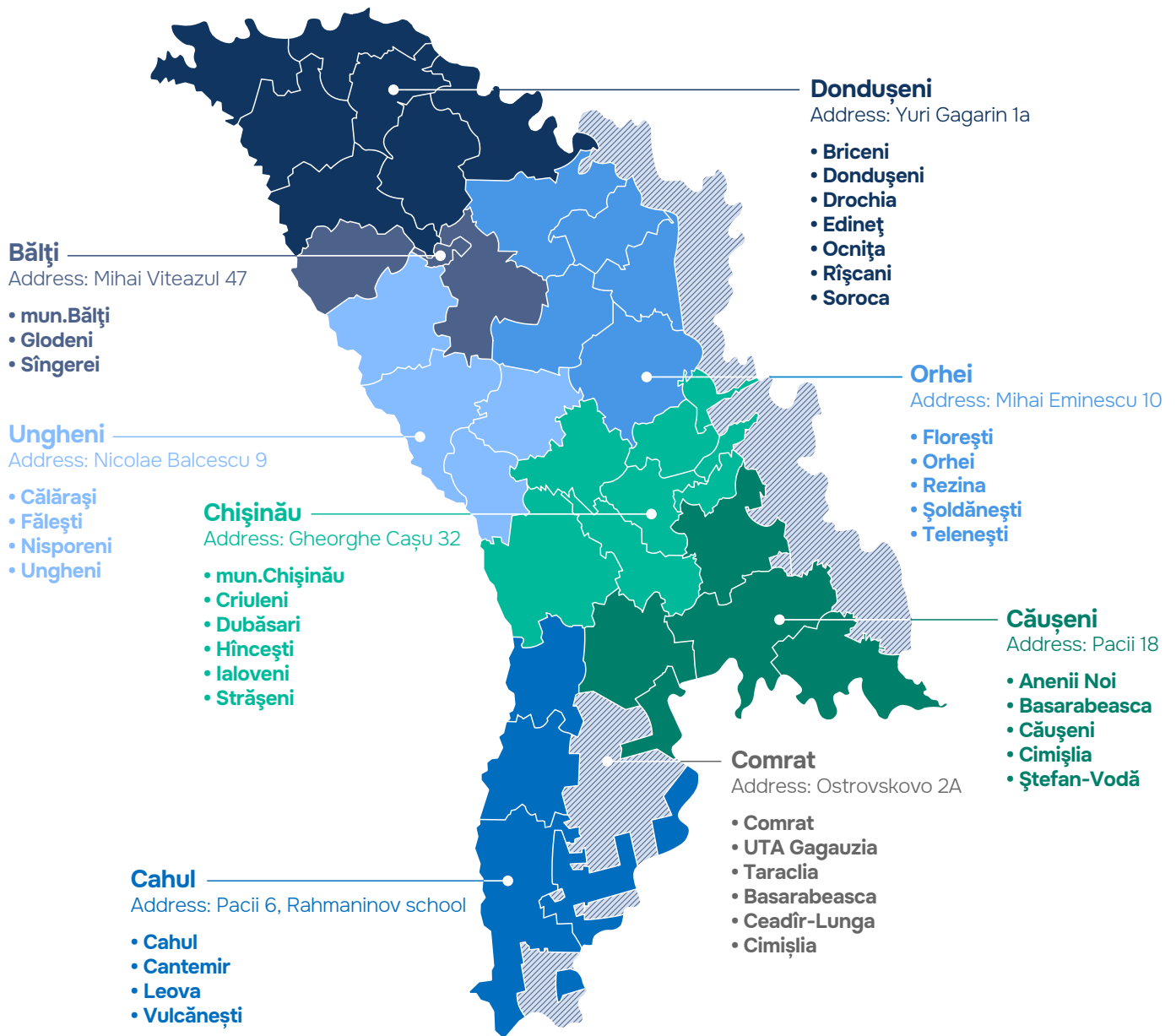
2 On the date of the appointment, individuals undergo a registration interview, capturing basic biodata, employment and educational history, specific needs including any protection needs and a socio-economic profile.

3 Once the interview is completed, refugees receive their pre-paid bank card. Payments will be credited to the account within a few days after their interview. Verification interviews will be conducted on a periodic basis.

 Home visits can be conducted for individuals with limited mobility or medical issues.

 The centres have protection desks, operated by Law Centre of Advocates, that provide information and support to refugees.

# Registration Centres for Financial Assistance in Moldova:



\*The boundaries and names shown and the designations used on this map do not imply official endorsement or acceptance by the United Nations.

UNHCR is grateful for the support provided by donors who have contributed to the financial assistance programme in Moldova:



Contacts:

**Bertrand Blanc**  
Representative (a.i.), [blanc@unhcr.org](mailto:blanc@unhcr.org)

**Yigit Anil Gurer**  
Programme Cash-Based Interventions Officer,  
[gurer@unhcr.org](mailto:gurer@unhcr.org)

[@unhcr\\_moldova](https://www.facebook.com/unhcr_moldova) [unhcr.org/md](https://www.unhcr.org/md) [@unhcr\\_moldova](https://www.instagram.com/unhcr_moldova)

For more information, please visit the Operational Data Portal for Moldova or the Global Focus page for the Ukraine Situation.



UNHCR Moldova is also grateful for the cooperation of Moldovan authorities at all levels, other UN agencies, the private sector and civil society organizations.