

Key Figures


472,000
Estimated individuals

 who arrived in Syria from Lebanon
 Since 23 Sep 2024

126,209
Estimated household

 who arrived in Syria from Lebanon
 Since 23 Sep 2024

6

Border crossing points


4

Health / Protection border post

Since the escalation of hostilities in Lebanon, an estimated number of individuals, including both Lebanese and Syrians, have crossed the border from Lebanon into Syria.

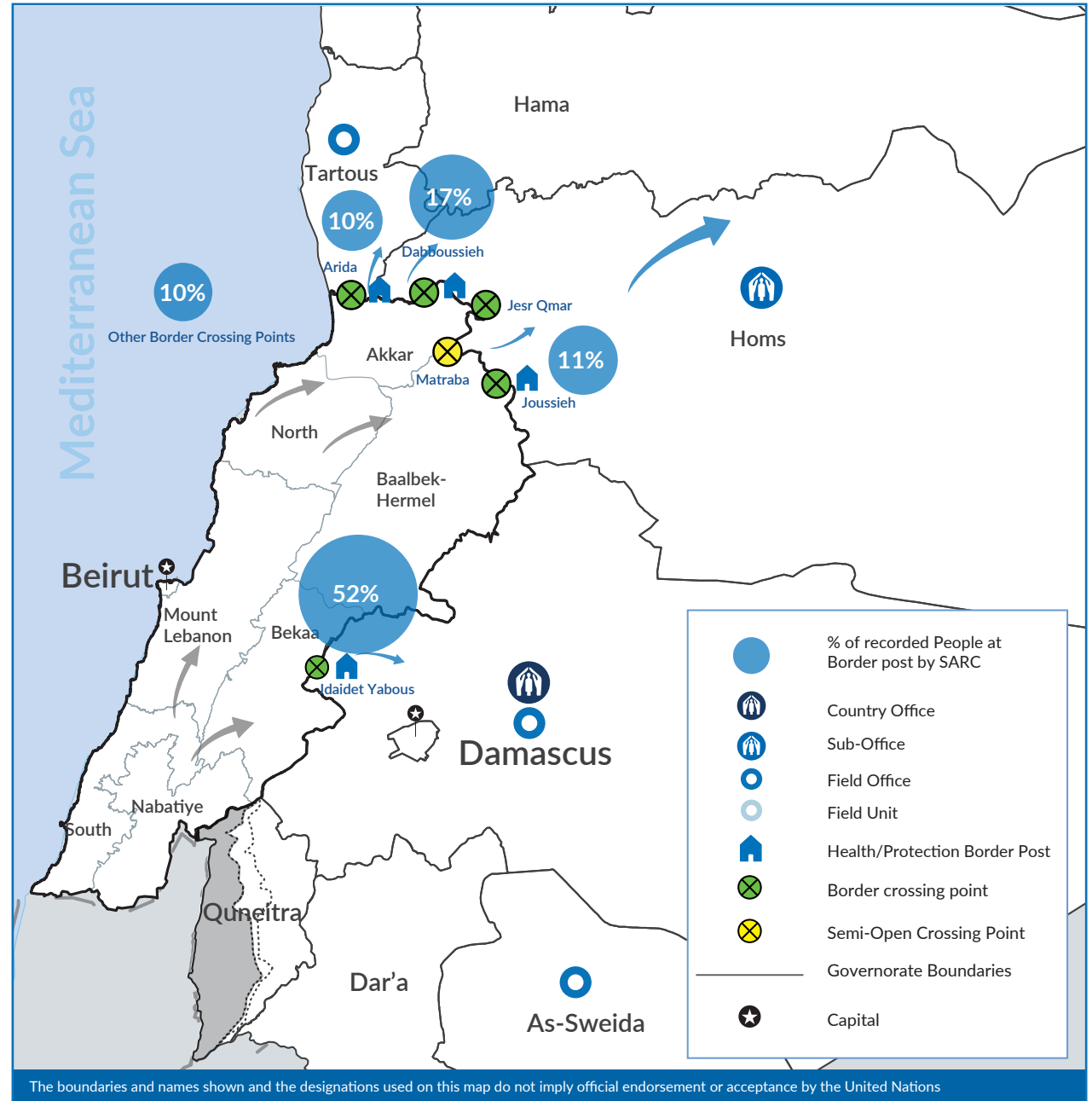
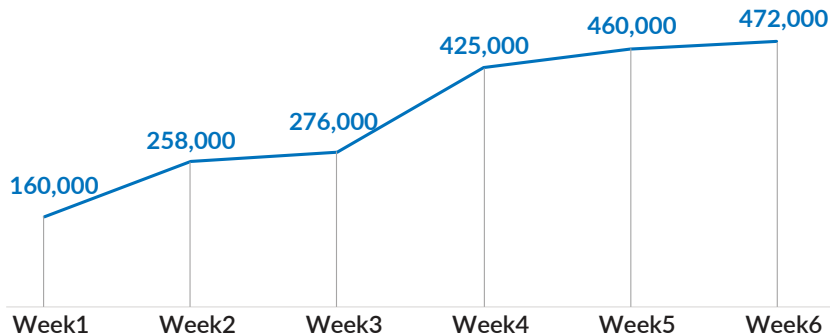

71%
 Syrians

27%
 Lebanese

2%
 Other nationalities

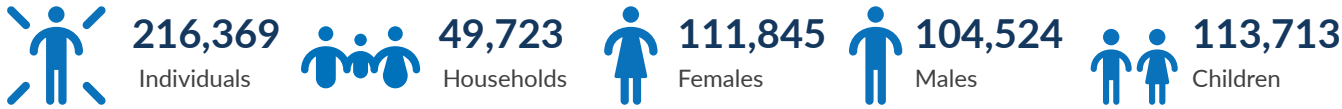
Cumulative arrival trend by week in Syria

Since 23 Sep 2024

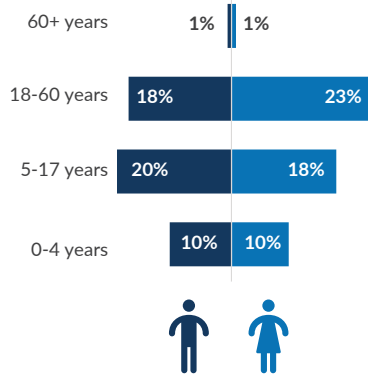


The boundaries and names shown and the designations used on this map do not imply official endorsement or acceptance by the United Nations

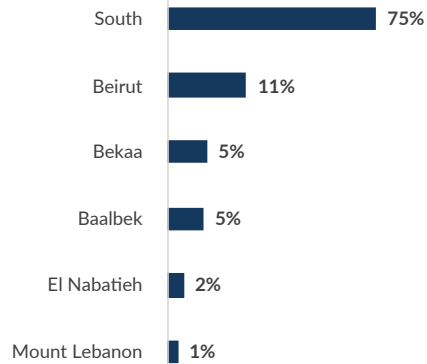
Syrian Returnees



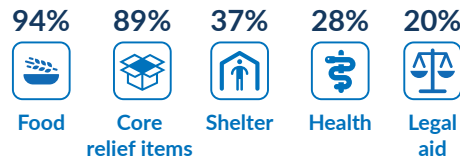
Age/gender breakdown



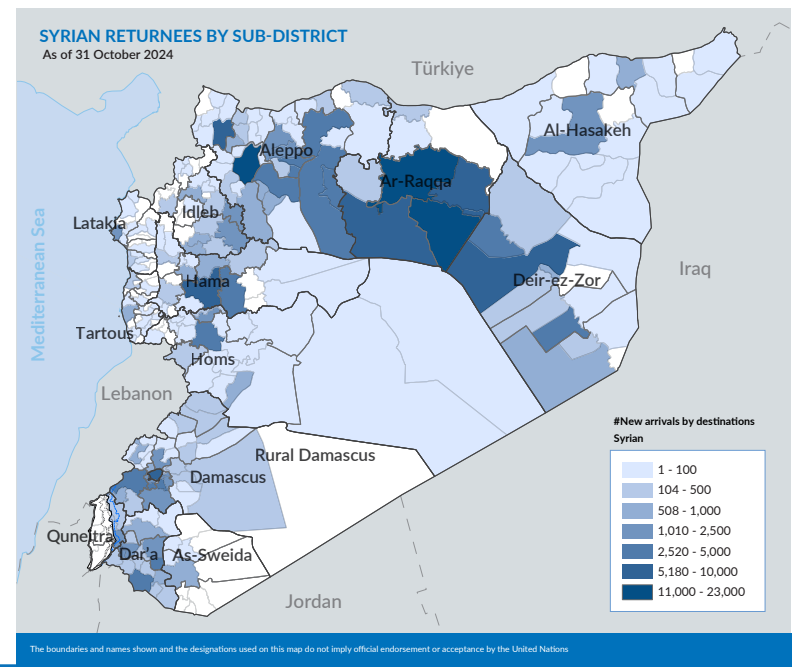
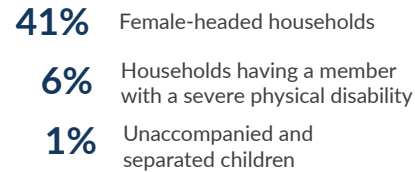
Places of departure in Lebanon



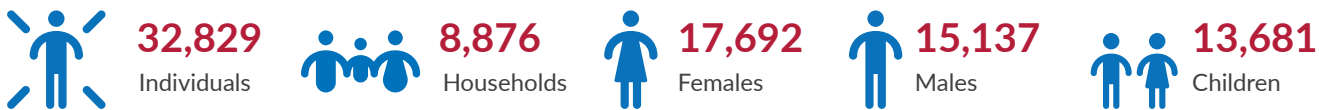
Top needed services¹



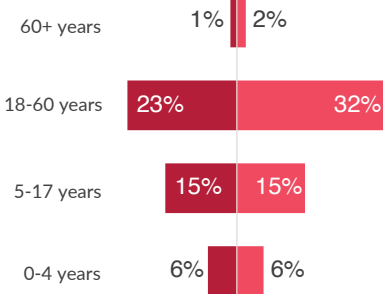
Returnees with specific needs



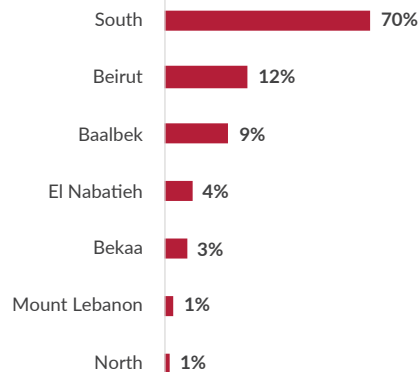
Lebanese Refugees



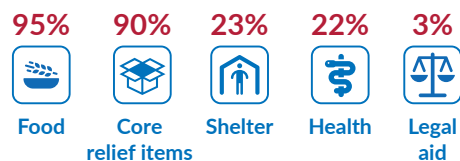
Age/gender breakdown



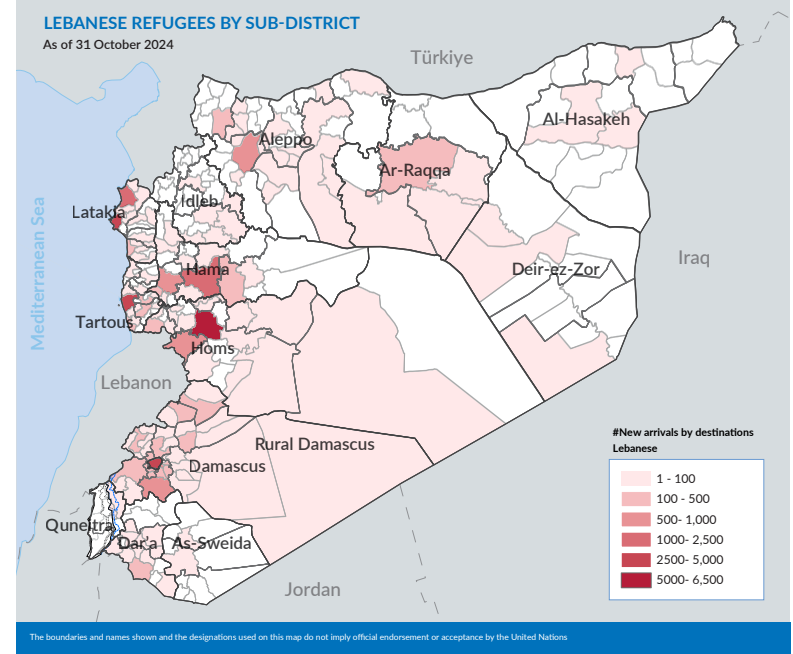
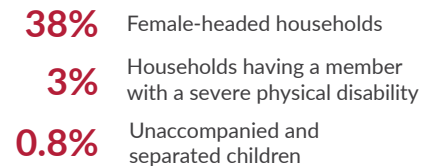
Places of departure in Lebanon



Top needed services²



Arrivals with specific needs



¹This resulted from a survey conducted with 49,723 individuals from Syrian returnee families

²This resulted from a survey conducted with 8,876 individuals from Lebanese refugee families