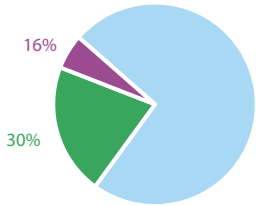


The third quarter of 2024 WaSH sector dashboard summarizes the progress made by WaSH sector partners involved in the Lebanon Response Plan (LRP). The WaSH sector in Lebanon is working to: Outcome 1: Strengthen national, regional and local public institutions' capacities to deliver improved public policies, goods and services (water and sanitation). Outcome 2: More vulnerable people in Lebanon are using safely managed drinking water and sanitation services whilst reducing health and environmental risks and improving water quality by increasing the proportion of wastewater that is safely treated. **This dashboard is based on information reported by WaSH sector partners operating under the sector strategy discussed with and endorsed by the Ministry of Energy and Water.**

## 2024 Sector Funding Status

as of September 2024



Sector Appeal 2024: \$190 M  
 Received in 2024: \$56.8 M  
 Carry over from 2023: \$30.1 M

## 2024 Population Reached

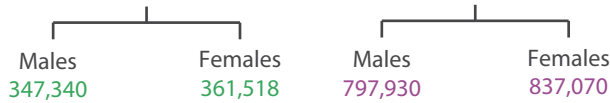


2,582,109

People in Need

Reached: 708,858

Targeted: 1,635,000



## 2024 Population Figures

Lebanese



1,270,752

People in Need



900,000

People Targeted



327,070

People Reached

Displaced Syrians



1,121,176

People in Need



660,000

People Targeted



317,124

People Reached

Palestine Refugees in Lebanon



75,503

People in Need



50,000

People Targeted



1,816

People Reached

Palestine Refugees from Syria



23,026

People in Need



15,000

People Targeted



4,506

People Reached

Migrants



97,408

People in Need



10,000

People Targeted



1,190

People Reached

The cholera risk map that was developed in 2022 has served as a crucial tool for identifying high-risk areas and guiding emergency interventions.

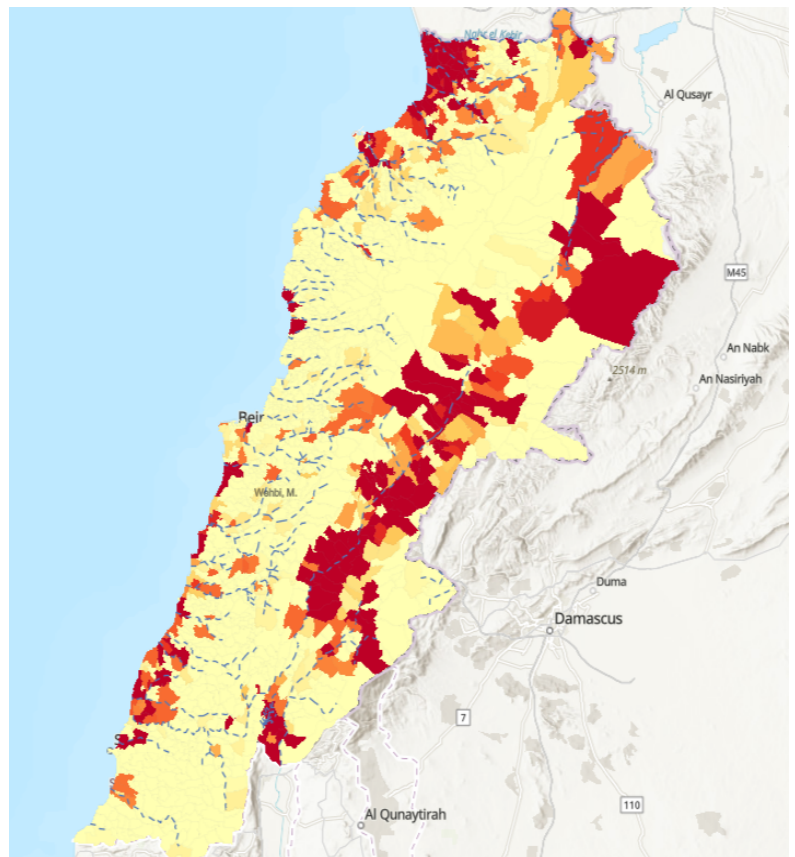
Building upon this framework, an updated WBD risk map for 2024 has been developed, incorporating a comprehensive set of indicators to assess the vulnerability of different cadastres to waterborne diseases.

This updated map highlights areas with dense populations, inadequate infrastructure, and limited access to safe water and sanitation facilities, providing valuable insights for targeted intervention strategies.

This map serves as a visual representation of the areas at highest risk for water-borne diseases, providing stakeholders with a clear understanding of the areas that require immediate attention and action.

In the updated version of the WBD risk map, we particularly emphasized on these indicators

- Density of population, factoring in the presence of IDPs and Collective shelters, in addition to displaced Syrians and Informal Settlements (Data source: Inter-Agency population package, IOM-DTM)
- Damages and dysfunctionality of water and sanitation infrastructure





## LRP Key Achievements: January 2024 - September 2024

# of people assisted with permanent improved access to adequate quantity of safe water for drinking and for domestic use  
404,782

# of affected people assisted with permanent improved access to safely managed wastewater services  
204,322

# of people assisted with temporary access to adequate quantity of safe water for drinking and water for domestic use  
242,078

# of affected people with temporary access to improved safe sanitation  
198,978

# of individuals who have experienced a WaSH behaviour change session/activity  
164,467

## Escalation of hostilities in Lebanon

Total number of sites reached  
1,730

Total number of partners reported  
62

Number of water trucking missions  
1,730

Cubic meters of water trucking  
23,836

Number of desludging missions  
236

Cubic meters of desludging  
974

Litres of fuel distributed to water pumping stations  
246,000

Number of water pumping stations provided with fuel  
25

Number of additional showers installed  
201

Number of additional toilets installed  
46

Litres of bottled water distributed  
1,300,916

Number of water heaters installed  
41

Number of Hygiene kits distributed  
50,733

Number of other kits distributed (Baby, MHM, etc...)  
15,920

## Contributing partners

The 85 organizations mentioned below are partners contributing to the achievements of the WaSH sector under the Lebanon Response Plan and addressing the current escalations of hostilities in Lebanon. These partners are reporting on ActivityInfo:

ACF Spain, ACTED, AFDC, AICA, Al Midan, AMEL, AND, ANERA, Archenova and Tankamel Sawa, AVSI, B&Z, Beit el Baraka, Borderless, CARE, CESVI, Dar Al Zahraa, DCA, DPNA, DRC, GVC, Hadatha, HAND, Hilfswerk Austria International HWA, IMC, International Association for Relief and Development (Onsur), Intersos, IOM, Islamic Relief Lebanon, ISWA, JRS, KAFA, Lebanese Red Cross, Lebanese Social Responsibility - LSR, LOST, LRI, MDSF, MEDAIR, Medglobal, Mouvement Social, MSF-OCG, Naba'a, Nabad, NRC, Nusaned, Organization Nationale de Développement Economique et Social - Ondes, OXFAM, Peace Labs, Plan International, PCPM, PU-AMI, RI, RMF, Sama for Development - SFDO, SAMS, SAWA Group, SBT, SCI, Solidarités International, Tabitha-Dorcas, UNHCR, UNICEF, URDA, WVI, YOU MATTER