

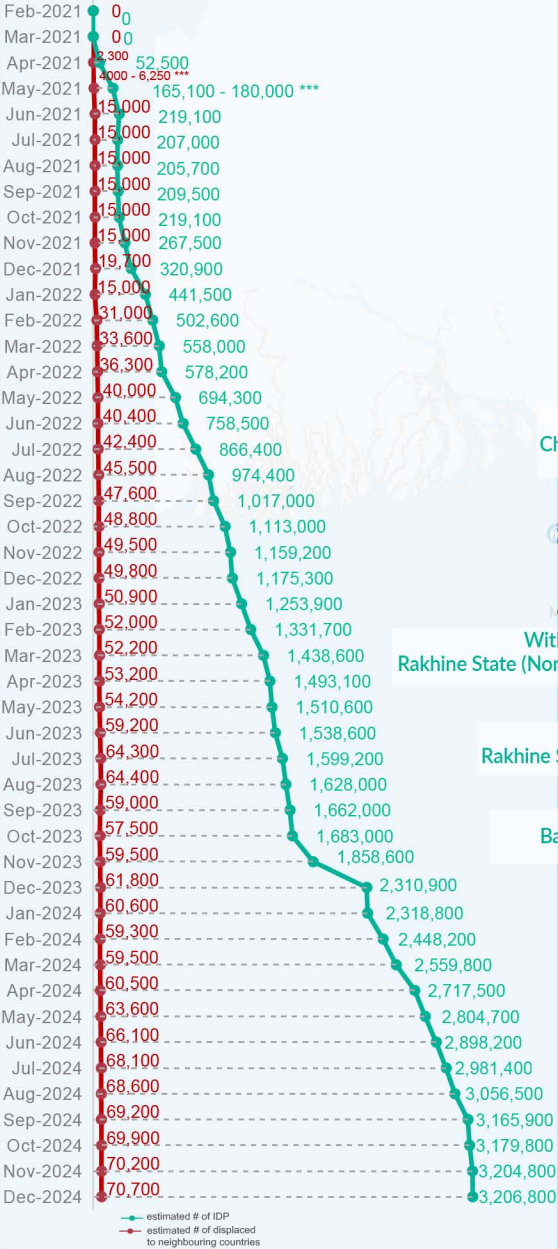
Key figures

Estimated # of IDPs → 3,206,800

Estimated # of displaced to neighbouring countries → 70,700

Source : UN in Myanmar

Estimated displacement figures by Month



*140,400 persons are displaced by armed conflict in neighbouring Kayah State while 4,600 persons are displaced by inter-EAO conflict between SSPP and RCSS.

**UN Estimates

***Range of figures was used while data collection was in progress.

Estimated internal displacement within Myanmar since 1 February 2021 (rounded to the nearest hundred)

Estimated displacement to neighbouring countries since 1 February 2021, who remain displaced (rounded to the nearest hundred)

- IDP unplanned settlement (pre-1 Feb 2021)
- IDP Center (pre-1 Feb 2021)
- IDP spontaneous location (pre-1 Feb 2021)
- IDP planned settlement (pre-1 Feb 2021)
- Temporary shelter for displaced people from Myanmar
- Refugee, planned settlement
- States/Provinces with new arrivals
- International boundaries
- UNHCR Regional Bureau
- UNHCR Multi-country office
- UNHCR Country Office
- UNHCR Sub-Office
- UNHCR Field Office
- UNHCR Field Unit
- UNHCR Liaison Office

Key figures

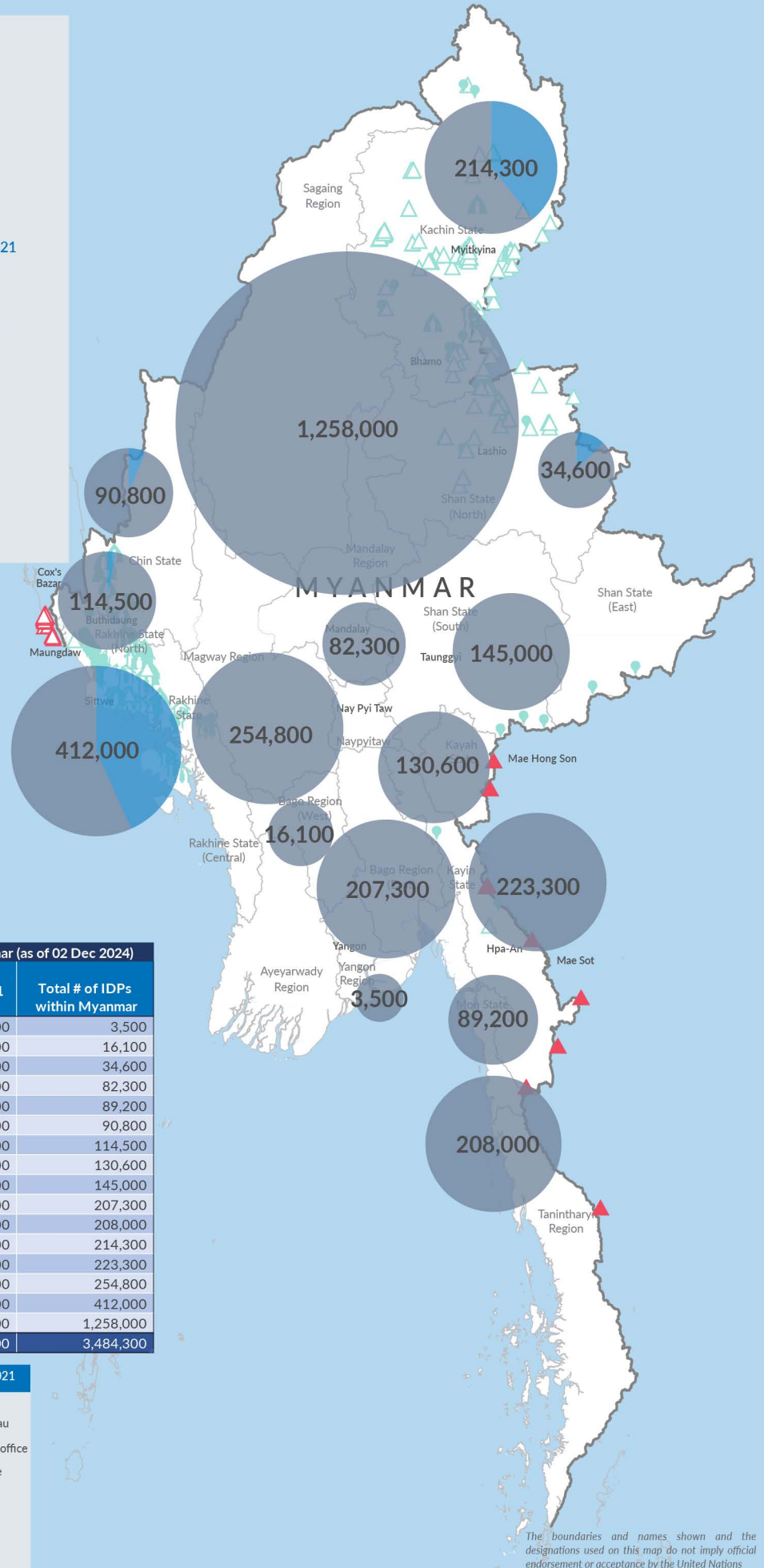

3,484,300

Estimated total IDPs within Myanmar


277,500
 Estimated # of IDPs displaced prior to 1 Feb 2021
(As of 30 Jun, 2024)

3,206,800
 Estimated # of IDPs displaced post 1 Feb 2021
(As of 02 Dec, 2024)
 Prior to 1 Feb 2021
 Post 1 Feb 2021

Source : UN in Myanmar



Estimated internal displacement within Myanmar Pre+Post 1 February 2021 (rounded to the nearest hundred)

-  IDP unplanned settlement (pre-1 Feb 2021)
-  IDP Center (pre-1 Feb 2021)
-  IDP spontaneous location (pre-1 Feb 2021)
-  IDP planned settlement (pre-1 Feb 2021)
-  Temporary shelter for displaced people from Myanmar
-  Refugee, planned settlement
-  International boundaries
-  UNHCR Regional Bureau
-  UNHCR Multi-country office
-  UNHCR Country Office
-  UNHCR Sub-Office
-  UNHCR Field Office
-  UNHCR Field Unit
-  UNHCR Liaison Office

The boundaries and names shown and the designations used on this map do not imply official endorsement or acceptance by the United Nations