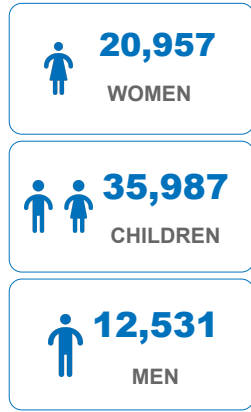
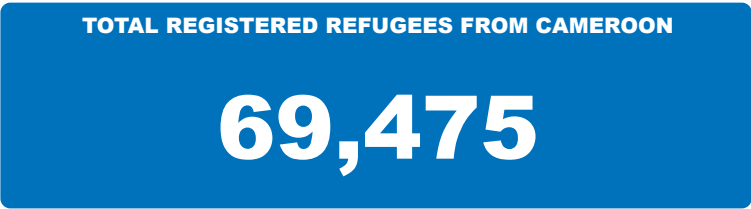
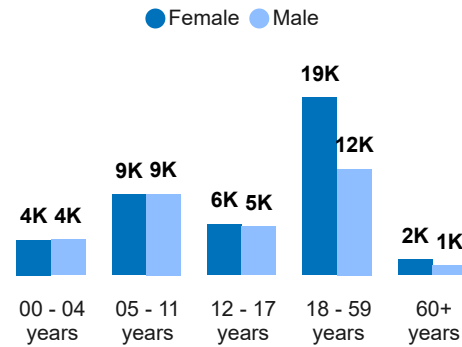


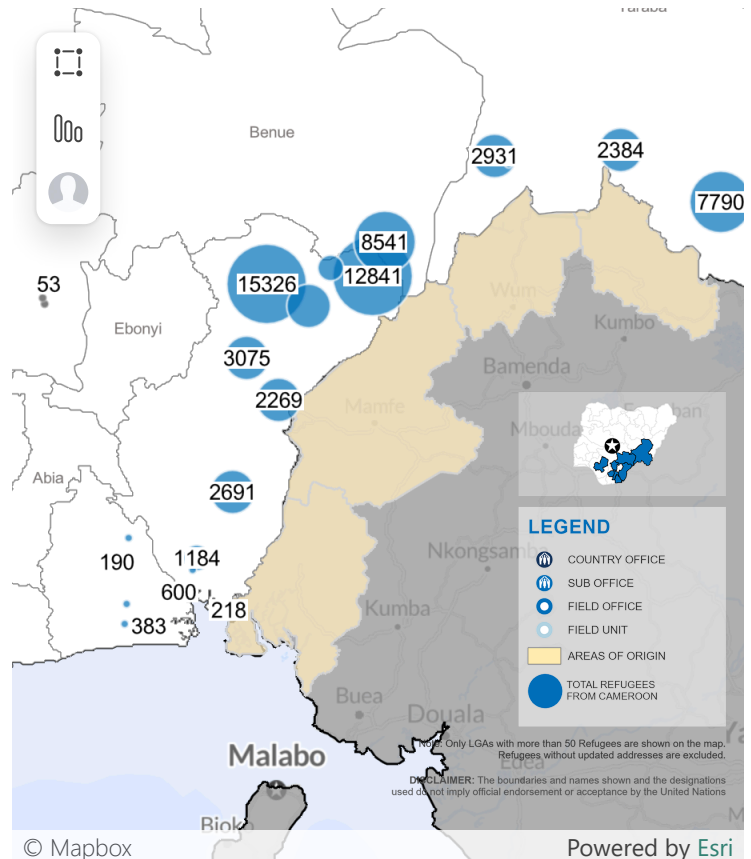
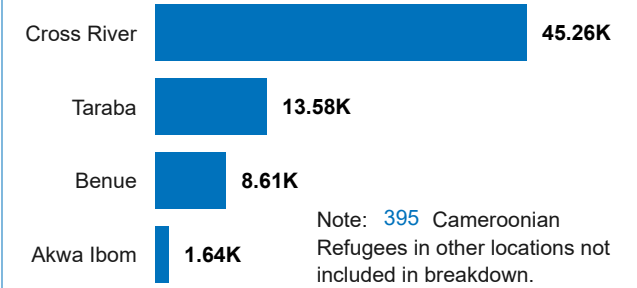
Cameroonian refugees are predominantly from the North-West and South-West regions of Cameroon affected by the conflict between the government and activists calling for secession of these Anglophone regions. The arrival of Cameroonian refugees in Nigeria has since presented a new dimension to the already complex humanitarian situation in Nigeria.



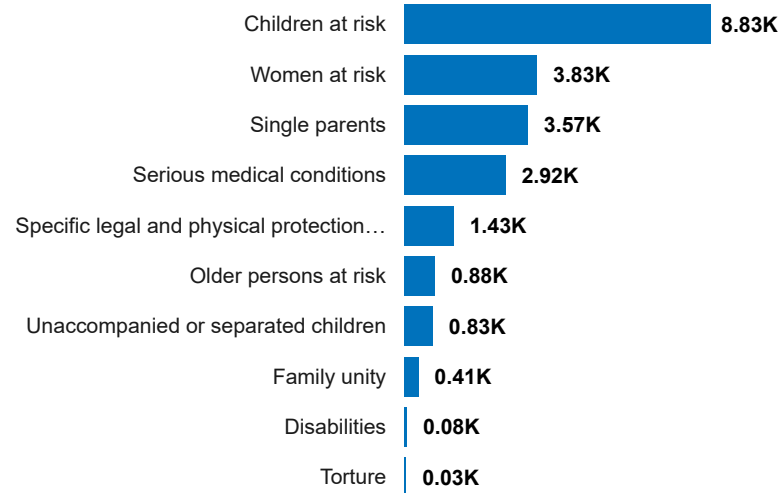
Population by Age, Gender & Diversity



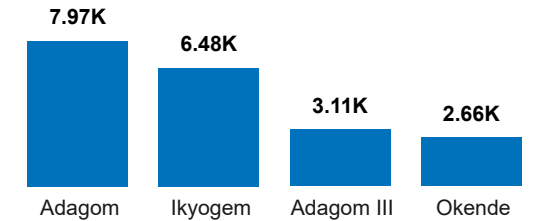
Breakdown by Location



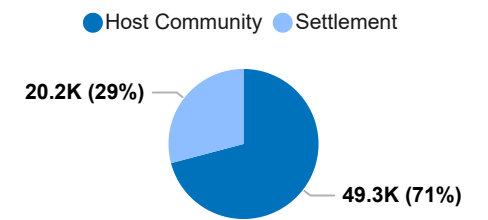
Breakdown by Specific Needs



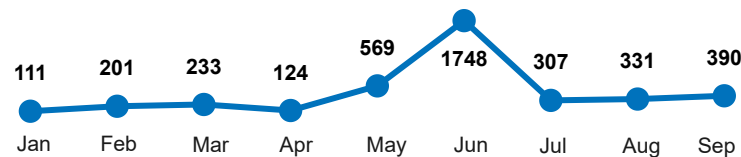
Breakdown by Settlement



Breakdown by Location Type



Monthly Registration Trend



Unregistered Population

Since August 2022 there has been an influx of approximately **32,000** persons from Cameroon, with majority of the population located in Madagali, Mubi North, Mubi South and Michika local government areas in Adamawa State. As of 30 September 2024, **21,443** of them have been registered by NCFRMI & UNHCR as asylum-seekers.