



LEBANON
Response Plan

LRP 2025 Partner Appeal Briefing

January 20, 2025

Agenda

- 1. Overview of the Lebanon Response Plan**
- 2. Sector Strategies Overview: Outcomes, Budgets, PiN, Targets**
- 3. Launch of Partner Appeal**
- 4. Q&A**



Lebanon Response Plan Overview

Stephanie Laba, Inter-Agency Coordination Officer (UNHCR)

Lebanon Response Plan Overview

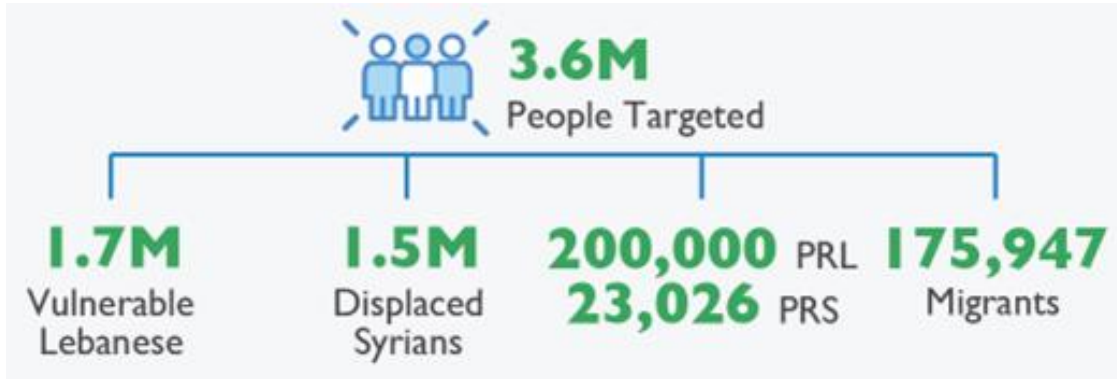
What is the Lebanon Response Plan?

- Unified response framework for crisis-affected populations in Lebanon **co-led by the Government of Lebanon (GoL) and the United Nations (UN)**.
- Two-year **humanitarian-stabilization framework** (2024-2025), with annual planning.
- **Builds upon the previous** Lebanon Crisis Response Plan (LCRP) and Emergency Response Plan (ERP).
- Addresses the needs of **vulnerable people across populations**, including Lebanese, displaced Syrians, Palestinian Refugees from Syria (PRS), Palestine Refugees in Lebanon (PRL), migrants (and 'other' category for reporting including refugees of other nationalities). Includes interventions targeting **households internally displaced** due to escalation of hostilities across population groups.

Lebanon Response Plan 2025

At a Glance

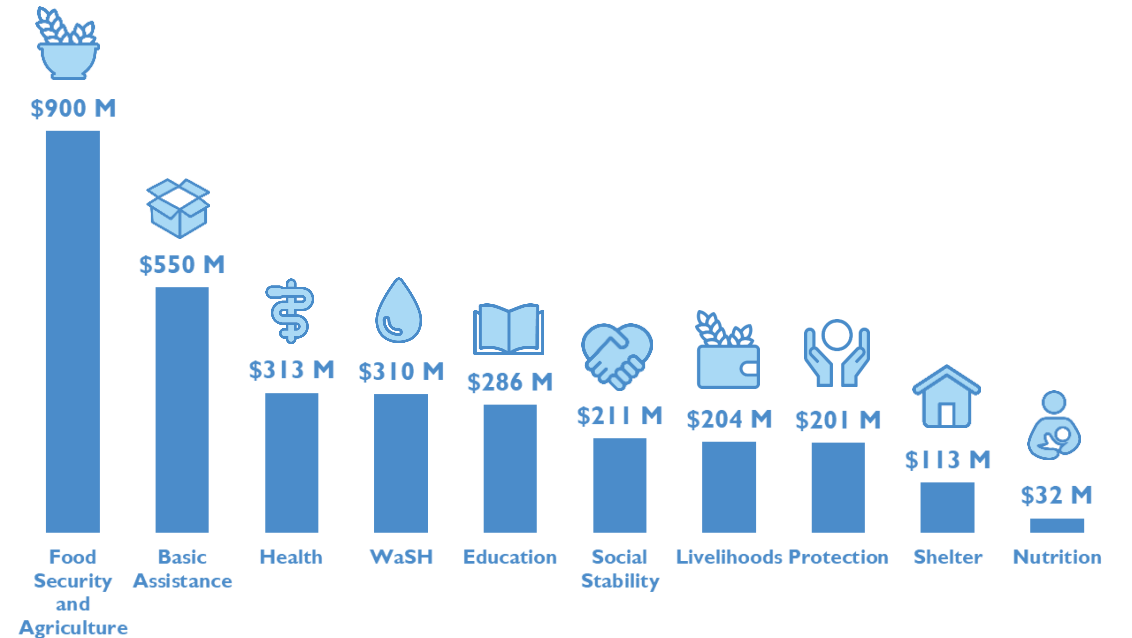
2025 Planning Figures



2025 Total Funding Request (USD)



2025 Funding Requirement by Sector (USD)



Lebanon Response Plan 2025

Strategic Objectives



Provide immediate humanitarian assistance to vulnerable populations to ensure critical needs are met.



Ensure protection of the vulnerable populations.



Support service provision through national systems including national rapid response capacity



Reinforce Lebanon's economic, social, and environmental stability.

Lebanon Response Plan Overview

Commitments

Guiding commitments for the LRP: *policies, strategies, approaches, and interventions*

- Sustainable Development Goals (SDGs)
- The Global Compact on Refugees (GCR)
- Humanitarian-Development-Peace Nexus (HDPN)
- Accountability to Affected Populations (AAP)
- Prevention of Sexual Exploitation and Abuse (PSEA)
- Localization
- Government of Lebanon sectoral plans/roadmaps

Lebanon Response Plan Overview

Principles

Principles governing the LRP framework and structure:

- Prioritization (in line with global practice for increasingly prioritized appeals)
- Collaborative planning for multiple years / linkages to UNSDCF
- Efficient Implementation and Coordination
- Strengthening area-based coordination
- Timely Information Sharing and Tracking (activities, funding, strengthening understanding of contribution to impact)
- Conflict sensitive approach

Lebanon Response Plan Overview

Planning Assumptions

Overall Steers:

- Address immediate and medium-term needs of vulnerable populations (Lebanese, displaced Syrians, Palestinian refugees, migrants, and others, including IDPs and returnees).
- Respond holistically to multiple crises (hostilities, socio-economic crisis, Syria crisis impacts) affecting people and institutions in Lebanon.
- Build on 2024 contingency, emergency preparedness, and business continuity planning; incorporate lessons learned from mass displacement responses.
- Adapt response to significant contextual changes, including rising needs and funding requirements. **Key milestones:**
 - **‘Gatekeeper moment’:** End of Q1-2025 review following the ceasefire agreement and Flash Appeal period.
 - Adjust geographical targeting for potential major population movements.

Strategic Focus:

- Incorporate localized, small-scale recovery efforts (e.g., livelihoods support) without large-scale reconstruction planning, which requires further evidence and frameworks.
- Conduct a ‘reality check’ to prioritize impactful components and adapt strategies to feasibility and effectiveness.
- Account for regional variations and cross-sectoral priorities through the Inter-Sector Coordination Group and January 2025 prioritization exercise.

Global and Regional Alignment:

- Address donor funding challenges amidst global crises and competing priorities.
- Align strategies with the **Regional Refugee & Resilience Plan (3RP)** for coherence and regional response integration.

Lebanon Response Plan Overview

Context Assumptions

Population Planning:

- **Baseline figures:** 2024 population of **5.7 million** (all cohorts) used for 2025 planning, with updates based on Displacement Tracking Matrix (DTM) data.
- Internal displacement and return data guide district-level planning; assumptions to be revisited during the year.

Key Contextual Assumptions:

- **Hostilities impact:** Continued reverberations of escalation in 2025. Ceasefire's sustainability uncertain; plans informed by December 2024 district-level data.
- **Population dynamics:** Vulnerabilities remain high for displaced, returning populations, and residents in conflict-affected areas + anticipated closures of collective shelters; potential new transitional shelter initiatives.
- **Infrastructure and services:** Risk of further deterioration or collapse without sustained support.
- **Environmental strain:** Mass displacement heightens pollution, waste, water resource diversion, and land degradation, intensifying fragility and tensions.

Social and Political Landscape:

- **Social tensions:** Escalation in hostilities and socio-economic crises exacerbate inter- and intra-communal pressures.
- **Economic vulnerability:** Rising needs disproportionately affect youth, older people, and individuals with disabilities. Negative coping mechanisms limit access to basic needs and services.
- **Syria's instability:** Ongoing impacts on Lebanon, with potential for increased sustainable returns if safe conditions improve.

Critical 'Moments to Watch':

- **Ceasefire evaluation:** 60-day halt to hostilities ends January 2025.
- **Parliamentary session:** Presidential election on 9 January 2025.
- **Regional dynamics:** New US President's inauguration (20 January 2025) may influence the region.



Sector Strategies Overview

Jana Nasr, Senior Inter-Agency Coordination Assistant (UNHCR)

Sector Strategies Overview



Basic Assistance

OUTCOME 1: Strengthen the ability of poor and vulnerable households and individuals, including female-headed HHs, persons with disabilities and children, to meet their basic needs

OUTCOME 2: Strengthen the ability of populations affected by seasonal hazards and emergencies to secure additional basic needs.

OUTCOME 3: Technical assistance to the national social assistance system is provided.



2.64 M



\$550.05 M

Population Cohorts	Population in Need (PiN)	Population Targeted
Lebanese	1,202,212	1,142,102
Displaced Syrian	1,337,114	1,261,355
Palestine Refugee from Syria (PRS)	23,026	23,026
Palestine Refugee in Lebanon (PRL)	200,000	162,000
Migrants	79,000	35,189
Others	12,370	12,370
GRAND TOTAL	2,853,722	2,636,042

Significant Changes to Sector Strategy for 2025:

- Transitional activity aimed at bridging emergency response with sustainable, medium-term recovery cash support.
- Additional tracking indicator for partners supporting Lebanese and establishing linkages with the National Social Protection Strategy under Outcome 3 of the sector.

Sector Strategies Overview



Education

OUTCOME 1: Enhanced equitable and inclusive access to and completion of safe, protective education for all learners in Lebanon, prioritizing the most vulnerable children and their caregivers.

OUTCOME 2: Improved learning outcomes for children and youth through improved quality of education services, ensuring safety, protection, and adaptation to multi-crisis situations.

OUTCOME 3: Strengthened governance, managerial, and knowledge management capacities within the education system at all levels, utilizing evidence-based decision-making.



0.90 M



\$285.91 M

Population Cohorts	Population in Need (PiN)	Population Targeted
Lebanese	560,201	640,946
Displaced Syrian	674,976	211,942
Palestine Refugee from Syria (PRS)	6,303	6,378
Palestine Refugee in Lebanon (PRL)	50,574	41,672
Migrants	10,551	3,393
GRAND TOTAL	1,302,605	904,331

Significant Changes to Sector Strategy for 2025:

- Accelerate rehabilitation of education facilities to ensure safe, inclusive environment for all learners.
- Implement targeted retention programs to present dropouts, integration psychosocial support and life skills training.
- Strengthen infrastructure for hybrid and flexible learning to support quality education access for all children.



Sector Strategies Overview

Food Security and Agriculture

OUTCOME 1: To ensure most vulnerable communities in Lebanon receive **FOOD ASSISTANCE** to reduce their food gaps and diversify their food intake.

OUTCOME 2: To improve agricultural production and productivity of most vulnerable farmers through agriculture livelihoods assistance to protect, restore and sustain their livelihoods.

OUTCOME 3: To enhance national capacities, coordination and information sharing on food security and agriculture.



2.59 M



\$900 M

Population Cohorts	Population in Need (PiN)	Population Targeted
Lebanese	1,202,212	1,142,102
Displaced Syrian	1,337,114	1,261,355
Palestine Refugee from Syria (PRS)	12,664	12,031
Palestine Refugee in Lebanon (PRL)	110,000	104,500
Migrants	79,176	75,217
GRAND TOTAL	2,741,166	2,595,205

Significant Changes to Sector Strategy for 2025:

- 6% deterioration of food insecurity comparing to 2024, a further deterioration due to escalating conflict, with an estimated 2.74 million Lebanese, displaced Syrians, Palestine refugees in Lebanon (PRL), Palestine refugees from Syria (PRS), and migrants, representing 49% percent of the population, were facing acute food insecurity (IPC Phase 3 [Crisis] and above).
- Scale up in food assistance (all modalities) with highest target, in particular looking into more targeted approach during and post emergency.
- Increase in recovery and agriculture interventions, particularly in south and Bekaa, Blabak-Hermel.

Sector Strategies Overview

Health

OUTCOME 1: Improved access to comprehensive primary healthcare.

OUTCOME 2: Improve access to hospital and advanced referral care.

OUTCOME 3: Enhance emergency, outbreak & infectious diseases preparedness and response.

OUTCOME 4: Improve access to health awareness & information.



2.49 M



\$303.5 M

Population Cohorts	Population in Need (PiN)	Population Targeted
Lebanese	2,196,440	1,098,220
Displaced Syrian	1,260,000	1,260,000
Palestine Refugee from Syria (PRS)	23,026	23,026
Palestine Refugee in Lebanon (PRL)	136,051	20,000
Migrants	96,878	90,097
GRAND TOTAL	3,712,395	2,491,343

Significant Changes to Sector Strategy for 2025:

- Free-of-charge routine vaccination is provided for all children under eighteen years of age,
- Strengthening continuum of care (Community→PHCC→Hospital) among Health sector partners, and addressing the bottlenecks.
- Strengthening intersectoral collaboration, referral and follow up for PWD inclusive services.



Sector Strategies Overview

Nutrition

OUTCOME 1: Young children and their caregivers have access to and demand for services aiming at prevention and management of all forms of malnutrition and the associated developmental risks (0-5 years of age).

OUTCOME 2: School age children, adolescents have access to and demand for services aiming at prevention of all forms of malnutrition.

OUTCOME 3: Women and Pregnant Breastfeeding have access to and demand for services aiming at prevention and management of all forms of malnutrition.



0.92 M



\$32.24 M

Population Cohorts	Population in Need (PiN)	Population Targeted
Lebanese	941,243	658,870
Displaced Syrian	312,569	218,798
Palestine Refugee from Syria (PRS)	4,078	2,854
Palestine Refugee in Lebanon (PRL)	32,528	22,770
Migrants	29,036	20,325
GRAND TOTAL	1,319,454	923,617

Significant Changes to Sector Strategy for 2025:

- The **major shift in strategy** for delivering **nutrition outcomes** involves the adoption of a **multi-sectoral, systems-based approach** to nutrition.
- Shift toward less costly and more integrated interventions. By aligning nutrition within broader delivery platforms, leveraging existing infrastructure, and emphasizing prevention and cost-effective strategies, the overall resource requirements has been reduced without compromising outcomes.
- Building capacity of local actor to deliver nutrition interventions.



Sector Strategies Overview

Livelihoods

OUTCOME 1: Stimulate local economic growth and market systems to foster income-generating opportunities, decent and safe employment.

OUTCOME 2: Improve workforce employability.

OUTCOME 3: Strengthen policy development and enabling environment for job creation.

 **76.70 K**

 **\$203.65 M**

Population Cohorts	Population in Need (PiN)	Population Targeted
Lebanese	411,945	65,483
Displaced Syrian	67,002	10,651
Palestine Refugee from Syria (PRS)	1,931	307
Palestine Refugee in Lebanon (PRL)	1,634	260
Migrants	-	-
GRAND TOTAL	482,512	76,701

Significant Changes to Sector Strategy for 2025:

- Budget has increased by 8.3% in 2025, compared to 2024
- PiN has increased by 1.5% in 2025, compared to 2024
- The sector has 70 partners (of which 30 are local and 40 are international)

Sector Strategies Overview



Protection (incl. CP & GBV)

OUTCOME 1: Affected people have increased knowledge of their rights and have access to an effective justice and protection system.

OUTCOME 2: Affected people are safe, supported and empowered in their communities to contribute to positive change.

OUTCOME 3: Individuals at heightened risk have access to quality specialized protection response services and durable solutions



Population Cohorts	Population in Need (PiN)	Population Targeted
Lebanese	1,833,877	856,533
Displaced Syrian	1,269,227	516,395
Palestine Refugee from Syria (PRS)	19,206	19,206
Palestine Refugee in Lebanon (PRL)	169,616	59,052
Migrants	102,945	44,969
Others	11,133	6,500
GRAND TOTAL	3,406,004	1,502,655

Significant Changes to Sector Strategy for 2025:

- Integration of emergency response activities and renewed focus on strengthening protection systems.
- Strengthened focus on monitoring of protection risks and support to address these risks by protection and other actors.
- Clearly defined CP and GBV response framework.

Sector Strategies Overview



Shelter

OUTCOME 1: Reduce immediate protection-related shelter needs of the most vulnerable households.

OUTCOME 2: Improve access to adequate shelter in disadvantaged areas for enhanced social stability.

OUTCOME 3: Enhance the contribution of national institutions and organizations to Lebanon's shelter and housing response.



0.61 M



\$112.54 M

Population Cohorts	Population in Need (PiN)	Population Targeted
Lebanese	1,218,346	195,975
Displaced Syrian	786,000	382,600
Palestine Refugee from Syria (PRS)	6,613	3,145
Palestine Refugee in Lebanon (PRL)	57,440	24,500
Migrants	13,204	7,688
GRAND TOTAL	2,081,603	613,908

Significant Changes to Sector Strategy for 2025:

- A significant rise in the number of Lebanese targeted, due to the large needs for repair of lightly and moderately damaged homes caused by recent hostilities.
- The CfR target has increased to respond to the additional needs of conflict affected households.
- Further prioritization of weatherproofing assistance in informal settlements has led to a decrease of the overall target of displaced Syrians.
- A reference to the SMC strategy and its complementarity to the Shelter sector is made under the Response to the Escalation of Hostilities.

Sector Strategies Overview



Social Stability

OUTCOME 1: Strengthen municipalities, national and local institutions' ability to alleviate resource pressure, reduce resentment, and build peace.

OUTCOME 2: Strengthen municipal and local community & resources' capacity to foster dialogue and address sources of tensions and conflicts.

OUTCOME 3: Enhance the abilities of LRP partners and public institutions on tension monitoring and conflict sensitivity mainstreaming.



Population Cohorts	Population in Need (PiN)	Population Targeted
Lebanese	2,200,000	1,603,712
Displaced Syrian	1,500,000	1,500,000
Palestine Refugee from Syria (PRS)	23,026	23,026
Palestine Refugee in Lebanon (PRL)	200,000	200,000
Migrants	175,947	175,947
GRAND TOTAL	4,098,973	3,502,685

Significant Changes to Sector Strategy for 2025:

- Significant change in the budget for HMA activities (20 M) due to the conflict across Lebanon and the widespread use of various weapons and ammunition that left behind large amounts of unexploded ordnance.
- The sector will focus more on supporting municipalities (mainly the ones directly affected during conflict) to address the needs of the communities by providing basic services (water, solid waste management, support to municipal police).



Sector Strategies Overview

WaSH

OUTCOME 1: Strengthen national, regional and local public institutions’ capacities to deliver improved public policies, goods and services (water and sanitation).

OUTCOME 2: More vulnerable people in Lebanon are using safely managed drinking water and sanitation services whilst reducing health and environmental risks and improving water quality by increasing the proportion of wastewater that is safely treated.



2.33 M



\$310.00 M

Population Cohorts	Population in Need (PiN)	Population Targeted
Lebanese	2,146,366	1,693,666
Displaced Syrian	1,021,786	570,000
Palestine Refugee from Syria (PRS)	15,739	12,000
Palestine Refugee in Lebanon (PRL)	68,810	40,000
Migrants	88,773	10,000
GRAND TOTAL	3,341,474	2,325,666

Significant Changes to Sector Strategy for 2025:

- **Increased Focus on Post-Conflict Recovery:** rehabilitation of water and sanitation infrastructure/schemes affected during 2024 hostilities, including integration of renewable energy solutions to reduce reliance on fossil fuels, and increase use of remote monitoring technologies.
- **Introduction of Cash-for-WaSH in 2025:** A shift from in-kind aid to cash assistance, enabling vulnerable families to purchase water and hygiene supplies directly, fostering flexibility, dignity, and local economic support.
- **Maintain life-saving WaSH services** for affected populations (collective shelters, informal settlements, etc.) mitigating public health risks.



Launch of Partner Appeal

Maroun Sader, Information Management Officer (UNHCR)

What is an LRP Appeal and What to Appeal for?

- An **Appeal** is an “ask” for funding harmonized activities / activity packages that are aligned with sector strategies.
- The **LRP Appeal** is **needs based**; it is the sum of sectors’ needs-based appeal.
- The **Partners Appeal** is based on **capacity to implement** with the aim to cover all needs.
- Appealing partners need to be familiar with the LRP sector outcomes and outputs.

Who is an LRP Partner?

- **Partners appealing directly under the LRP.**
Partner name listed in the LRP publication, 3Ws, sector dashboards / activity reports
- **Partners implementing activities for an organization (ex: UN) who are appealing under the LRP “Implementing Partners”.**
Mentioned on 3Ws, sector dashboards / activity reports
- **Partners who participate in the working groups and align their activities to the LRP**
Mentioned on 3Ws, sector dashboards / activity reports

To Appeal or not to Appeal

Who is encouraged to appeal:

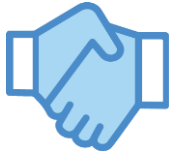
- Organizations who are familiar with LRP activities / attending working groups.
- Established organizations who have capacity to fund raise and are registered with MOIM.
- Experienced organizations in the sectors they are appealing for with good field presence.

Who should not appeal:

- Partners who have signed (or in process of signing) agreements with UN or NGOs as “implementing partners”. Unless bilateral appeal to donors is for a different sector.
- Partners who do not have a registration number with MOIM.
- Partners who do not have experience in the sector they are appealing for.

Benefits from being an LRP Appealing Partner

- Complementarity of activities / actions.
- Improved targeting.
- More visibility for your organization → increases opportunities to get funding.
 - LRP Appeal will be published on global FTS.
 - Your organization mentioned in LRP publications (report, dashboards, sector updates).
- Capacity building & training opportunities (reporting, tensions, PSEA, environment, etc.).



Important Note:

Being an LRP appealing partner does not secure any funding – it is still up to your organization to fundraise.

LRP 2025 Partner Appeal

- The 'LRP-Appeal' database is created on [ActivityInfo](#).
- Partners can submit their appeal from **13 to 24 January 2025**.
- Budgets need to be added by sector output.
- Targeted population figures need be added at sector level (Displaced Syrians, Lebanese, PRS, PRL, Migrants).
- Governorates coverage needs to be flagged at sector level.

How to Appeal?

- **Log into ActivityInfo:** <https://www.activityinfo.org/login>
 - Please log in to ActivityInfo and check if you have access to the “LRP-Appeal” database. If not, reach out to Maroun Sader at sader@unhcr.org for support, or your Sector IM focal point whose contact information is available in the [Sector Coordination Teams Contact List](#).
- **Prepare your Data:**
 - Refer to the [LRP 2025 Appeal Template Excel Sheet](#) to prepare your data before entering it into ActivityInfo.
- **Refer to the [LRP 2025 Appeal ActivityInfo Database User Guide](#):**
 - Follow the steps described and enter the Information in [ActivityInfo](#).
 - **New appealing partners** i.e., those who have not previously appealed under the LRP - will be requested to submit, via [ActivityInfo](#), a list of mandatory documents is required for conducting a capacity assessment as mentioned in the User Guide.
Only partners who successfully pass the capacity assessment will be included in the list of appealing organizations for LRP 2025.
 - A section dedicated to Frequently Asked Questions is available in the User Guide for your reference.
- **Click on ‘SAVE RECORD’:**
 - Do not forget to click on the ‘Save Record’ button to submit your final inputs.

New Partners

- New partners are partners who have not previously appealed under the LRP.
- New partners are requested to submit documents for capacity assessment (see next slide).
- Each new partner will be assigned to a specific sector coordinator to conduct the capacity assessment based on the highest sector budget.
- The sector coordinator reviews the document in liaison with the appealing partners and sets the evaluation category (accepted or not).

New Partners: Requirements for Capacity Assessment



When uploading the documents, please make sure to rename them as shown below:

1. MoIM Registration Paper (بيان علم و خبر صادر من وزارة الداخلية)
Document name: doc 1, doc 1.1
2. Mission statement, organization charter.
Document name: doc 2, doc 2.1
3. Organization chart that shows managerial structure in place.
Document name: doc 3, doc 3.1
4. Document Outlining Feedback and Complaints Mechanisms Within the Organization.
Document name: doc 4, doc 4.1
5. Document Proving Your Organization's Documented Experience in Implementing Humanitarian and Stabilization/Development Activities in Lebanon in the Context of the Syria Crisis. (e.g., Activity Reports)
Document name: doc 5, doc 5.1
6. Document Proving That Your Organization Already Implements Activities in the Targeted Governorate (e.g., Activity Reports).
Document name: doc 6, doc 6.1
7. Submit project concept note.
Document name: doc 7, doc 7.1
8. Document Proving Experience in Fundraising. (e.g., Annual Report, Funding Received Broken Down by Donor).
Document name: doc 8, doc 8.1
9. Sample Project Report Demonstrating Organization's Capacity to Conduct Monitoring and Evaluation (M&E).
Document name: doc 9, doc 9.1

Example on How to Appeal

Step 1:

Select the sector

Which Sectors you want to appeal for*

- Basic Assistance
- Education
- Food Security & Agriculture
- Health
- Protection - CP - SGBV
- Shelter
- WaSH
- Social Stability
- Livelihoods
- Nutrition

Step 2:

Select the Governorates where you will implement sector activities

Health Governorates*

- Akkar
- North
- Baalbek-EI Hermel
- Bekaa
- Beirut
- Mount Lebanon
- South
- El Nabatieh

Step 3:

Select the sector outputs

Select Health Outputs* REQUIRED

- OUTPUT 1.1: Financial subsidies and health promotion are provided to targeted population for improved access to a comprehensive primary healthcare package.
- OUTPUT 1.2: Free of charge medications for noncommunicable diseases are provided at primary healthcare centre level.
- OUTPUT 1.3: Free-of-charge acute disease medications, medical supplies, and reproductive health commodities are provided at primary healthcare centre level.
- OUTPUT 1.4: Free of charge routine vaccination is provided for all children under five at the primary healthcare centre level and through vaccination campaigns.
- OUTPUT 1.5: Primary healthcare institutions' service delivery is supported.
- OUTPUT 2.1: Financial support is provided to targeted population for improved access to hospital and advanced referral care.
- OUTPUT 2.2: Public and private hospital service delivery is supported.
- OUTPUT 3.1: The National Early Warning and Response System EWARS is expanded and reinforced.
- OUTPUT 3.2: Availability of selected contingency supplies is ensured.
- OUTPUT 3.3: Support to communicable diseases, is strengthened.
- OUTPUT 4.1: Health awareness and information is strengthened at the institutions level.
- OUTPUT 4.2: Access to healthcare information to women, men, and youth (children, boys, and girls) is increased at community level.

Step 4:

Add the budget for the selected output

HLT: OUTPUT 1.1 appeal budget* REQUIRED
Enter the 2024 appeal budget for Health output 1.1 in USD

Enter a number USD

Example on How to Appeal

Step 5:

Specify targeted population under all outputs

Health: Population Targeted* REQUIRED

Displaced Syrians
 Lebanese
 PRS
 PRL
 Migrant
 Others

HLT: # of targeted Displaced Syrians* REQUIRED
Enter the number of Displaced Syrians targeted under the Health

Enter a number Individuals

HLT: # of targeted PRL* REQUIRED
Enter the number of PRL targeted under the Health

Enter a number Individuals

Step 6:

Add a brief description for your sector activities

Add brief description of your Health Activities
Please provide comprehensive description of your activities. Include population or institutions targeted.

Step 7:

Ensure that you click on the 'Save Record' button

Save record



Key Links

- [3RP Regional Strategic Overview 2025](#)
- [Lebanon Information Hub](#)
- [LRP 2025 Appeal ActivityInfo Database User Guide](#)
- [LRP 2025 Appeal Template Excel Sheet](#)
- [Sector Coordination Teams Contact List](#)



Q&A



Thank you