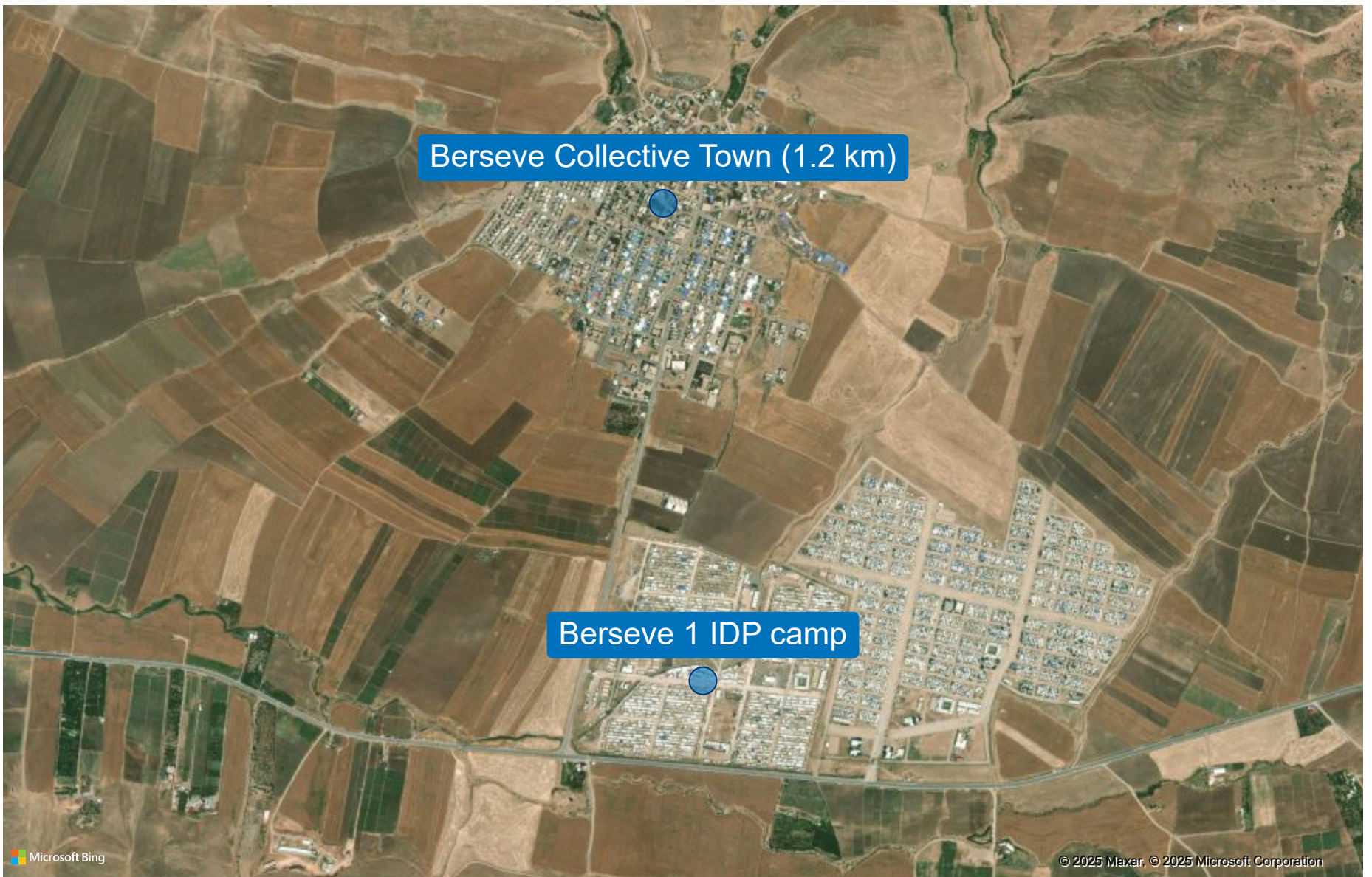
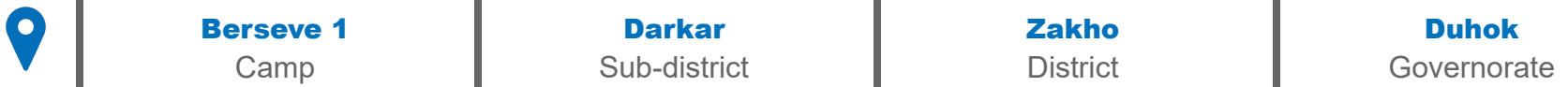


CAMP BACKGROUND INFORMATION

Berseve 1 camp was established in November 2014 and hosts predominantly Ezidi Internally Displaced People (IDPs), as well as other populations, who fled Sinjar in August 2014. UNHCR advocates for durable solutions for those in the camp, given the unsustainable living conditions. Many tents in Berseve 1 have exceeded their lifespan. Combined with IDPs' financial constraints and uncertainty about the camp's future, only a few residents have been able to upgrade their shelters. Consequently, residents remain vulnerable to harsh weather conditions in both summer and winter. IDPs in the camp indicate that to be able to return to their area of origin, security and law enforcement must be fully restored through institutions they trust, and they must have access to quality public services, adequate shelter, and livelihood opportunities. In addition, some indicate that they would prefer other durable solutions such as relocation in areas of displacement. As such, UNHCR is advocating for all durable solutions to be made available to the IDP population and that they have equal access to assistance packages available.



KEY FACTS & FIGURES



596
Total families



3,021
Total individuals



UNHCR/DMCR (BCF)
Camp management



318,000 m²
Camp area size



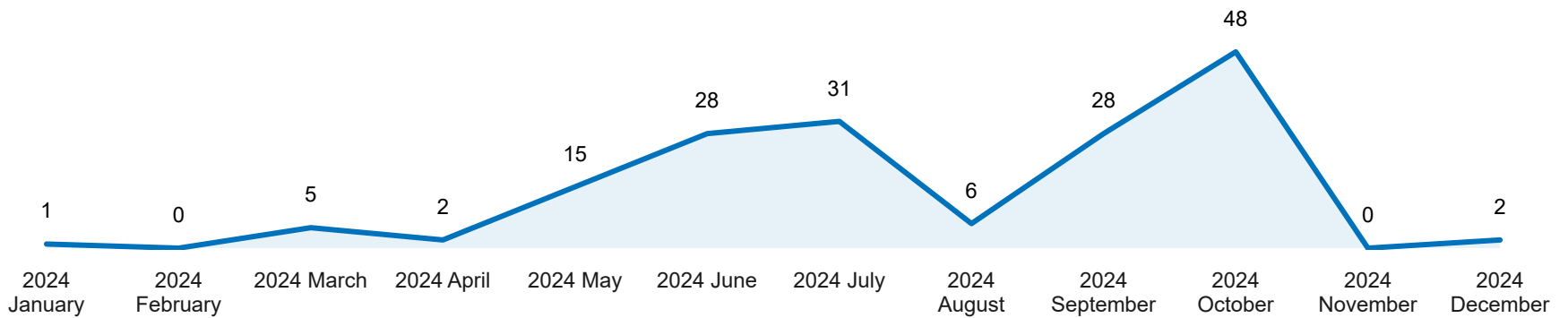
AFAD
Camp Construction



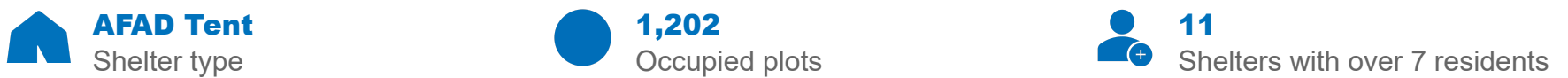
Private
Land ownership

POPULATION DEPARTURE TREND

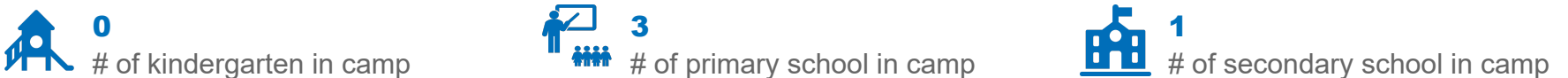
Since January 2024, 166 families (816 individuals) departed the camp, mainly through the International Organization of Migration (IOM) and Ministry of Migration and Displacement (MoMD) programmes on organized returns. This figure represents approximately 22% of the population registered as living in the camp as of January 2024. IDPs primarily departed to Ninewa.



SHELTER



EDUCATION



HEALTH



WASH



SERVICE MAPPING

Service	Entity type	Service provider name
Basic school (7-9)	Gol	General Directorate of Education
Food parcels	Gol	Ministry of Migration and Displacement
Basic school (1-6)	KRG	General Directorate of Education
Electricity	KRG	Directorate of Electricity
General protection	KRG	DOLSA - Duhok
Waste management	KRG	Directorate of Water and Sewage of the Kurdistan Region
Water supply	KRG	Department of Water Duhok
Camp management	Humanitarian	Barzani Charity Foundation
Child protection	Humanitarian	Island of Hope NGO
General protection	Humanitarian	Harikar
NFI	Humanitarian	Barzani Charity Foundation
Primary healthcare center	Humanitarian	Heevie Kurdistan Development Organization