



Mbarara Sub-Office Performance Snapshot

Population
Refugees and asylum-seekers

676,552
Refugees and asylum seekers

211,865
Households

77
Partners in Response

09
RLOs & CBOs

09
Government Partners

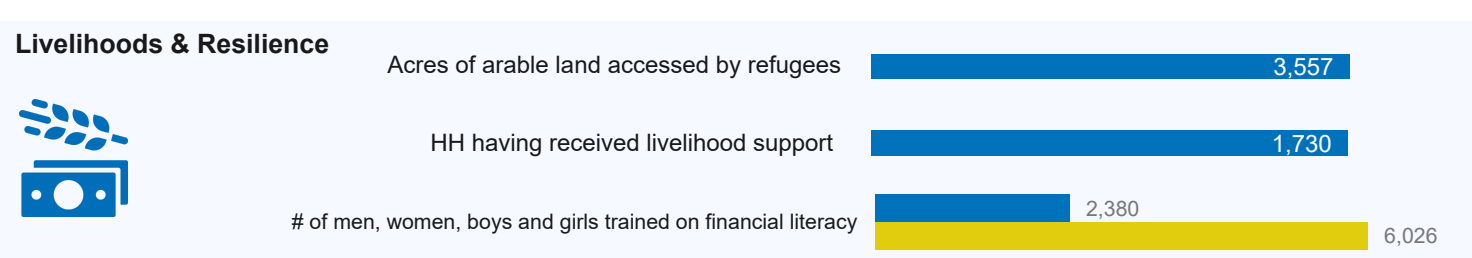
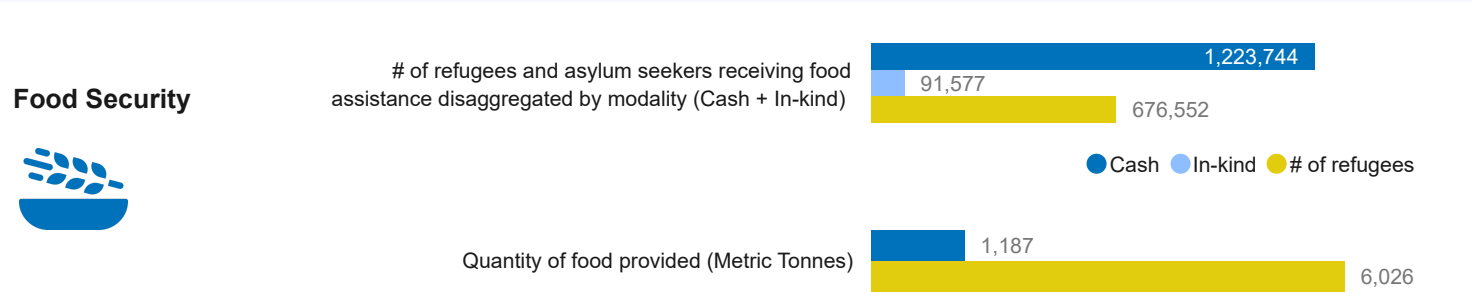
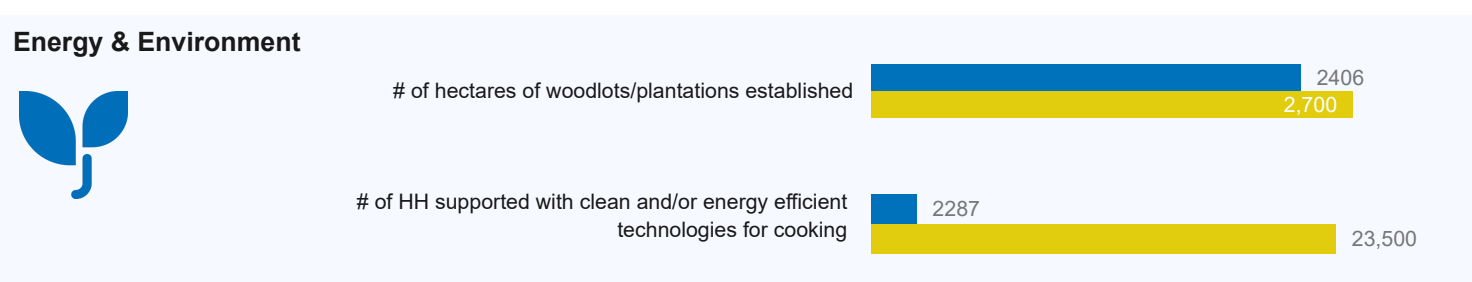
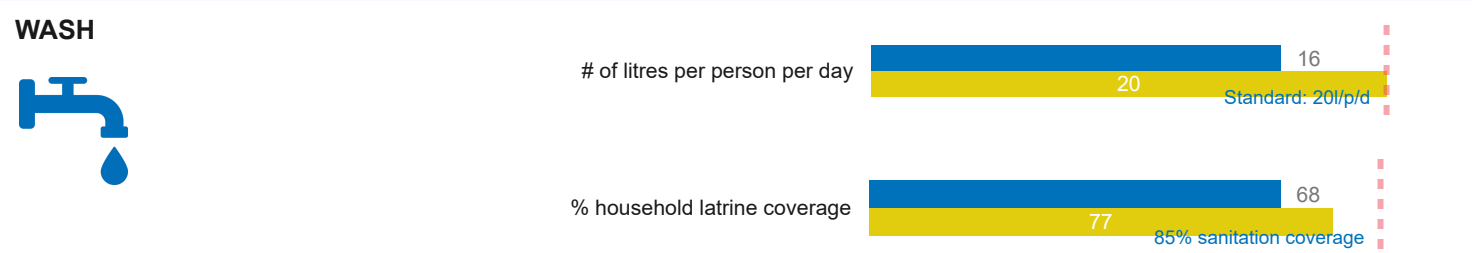
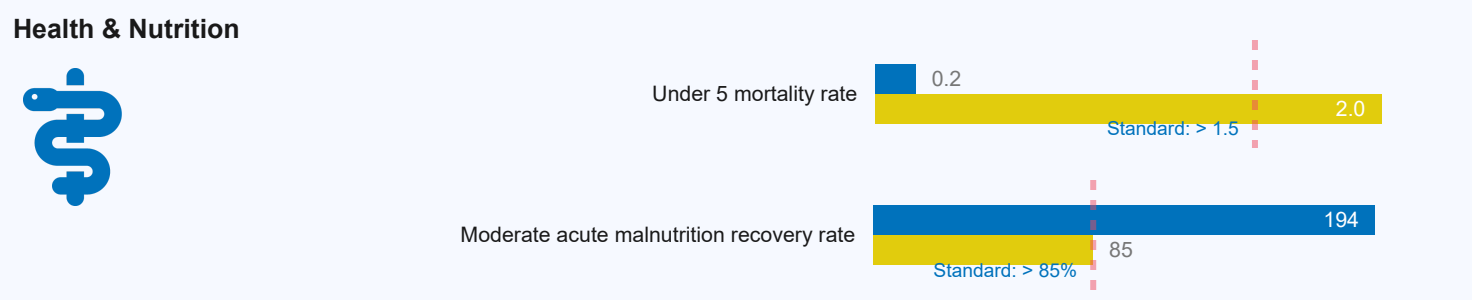
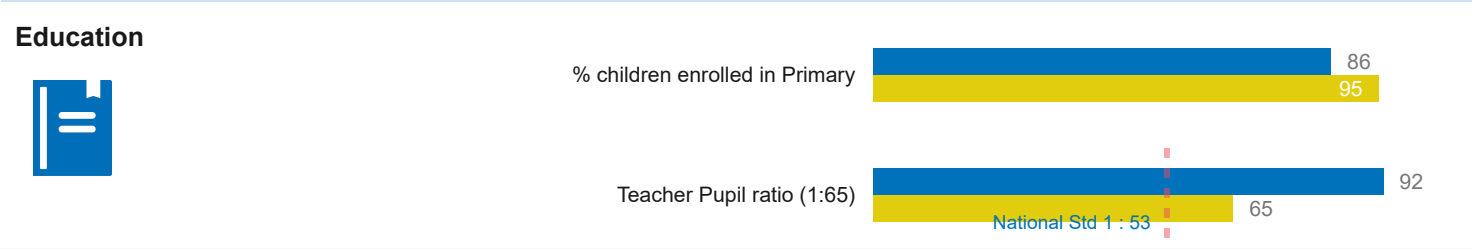
05
UN Agencies

14
National NGOs

40
International NGOs

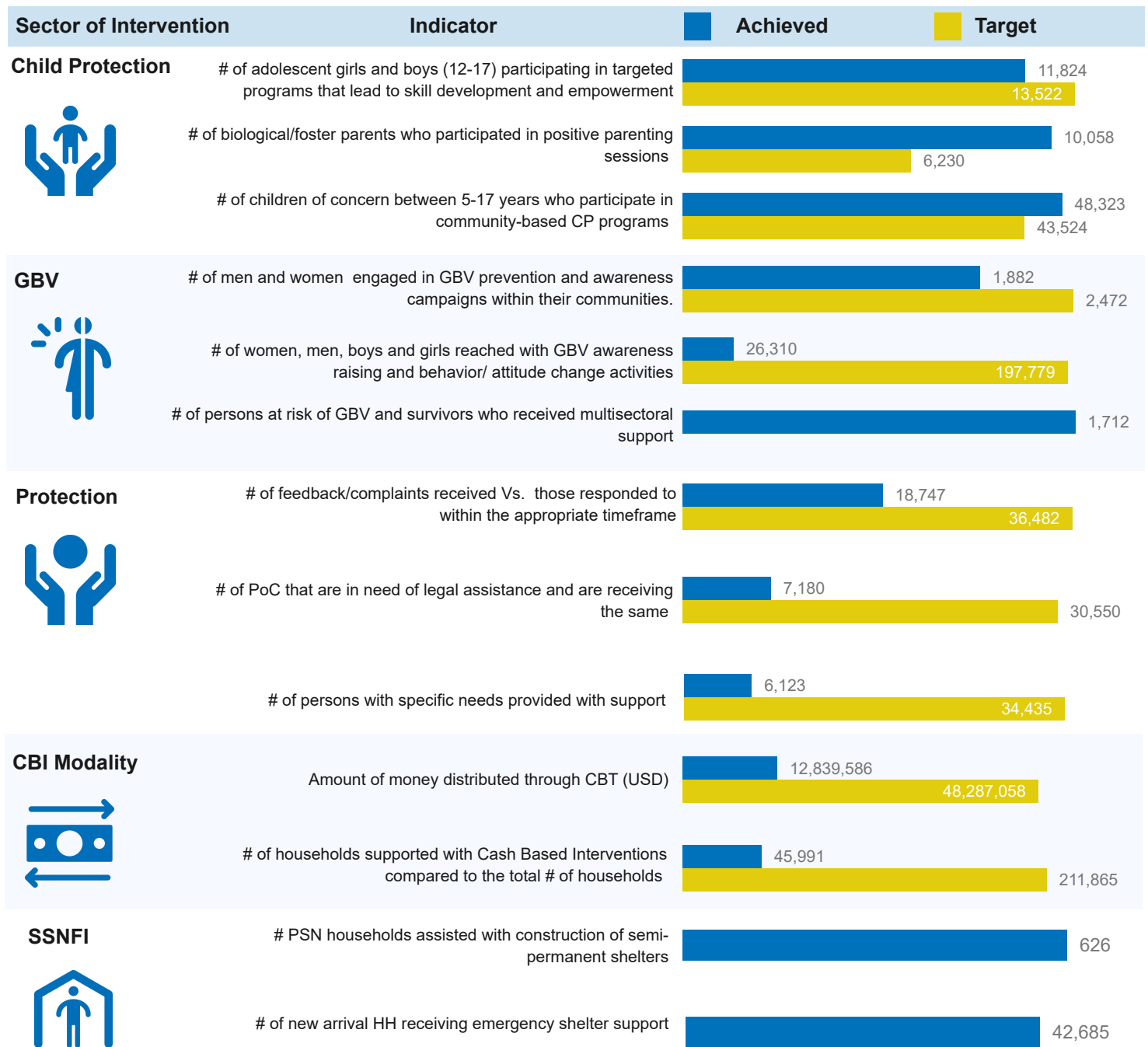
On average two performance indicators are reflected per sector against the annual 2024 RRP targets

Sector of Intervention	Indicator	Achieved	Target
------------------------	-----------	----------	--------





Mbarara Sub-Office Performance Snapshot



Partner presence by Q2 2025, UN Agencies and Government

National NGOs

ACORD, AWYAD, KRRC, Nsamizi, Post Bank, Ripple Effect, and TPO

Refugee Led Organizations (RLOs)

Tumaini, YARID

International NGOs

ADRA, AHA, AIRD, Alight, AVSI, CARE, DRC, Equity Bank, FCA, FRC, GNIU, HI, IRC, LWF, MTI, PWJ, SCI, URCS, WCH, and WVI

UN Agencies

IOM, UNFPA, UNHCR, and WFP

Government

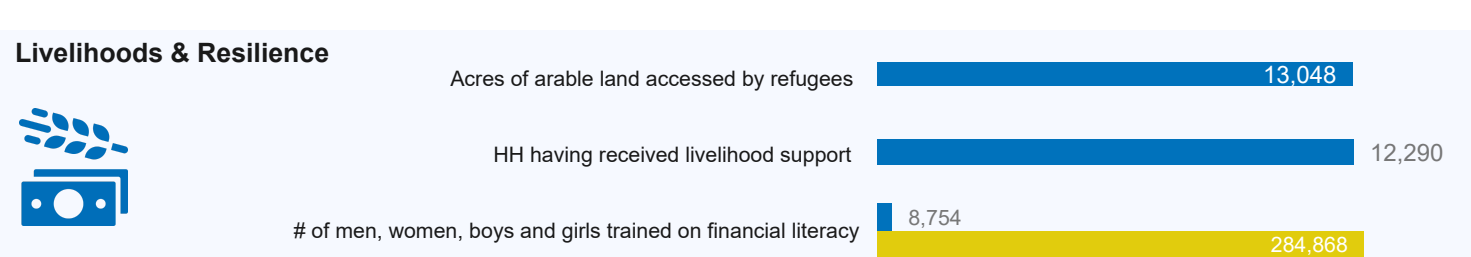
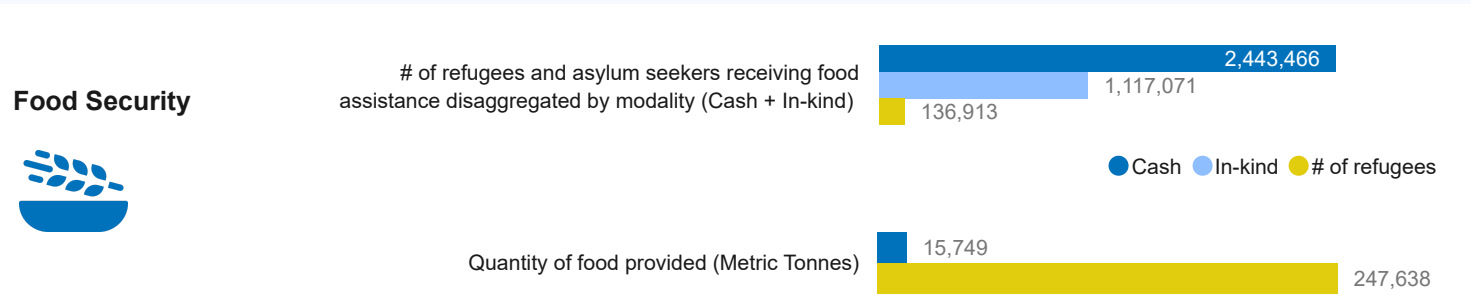
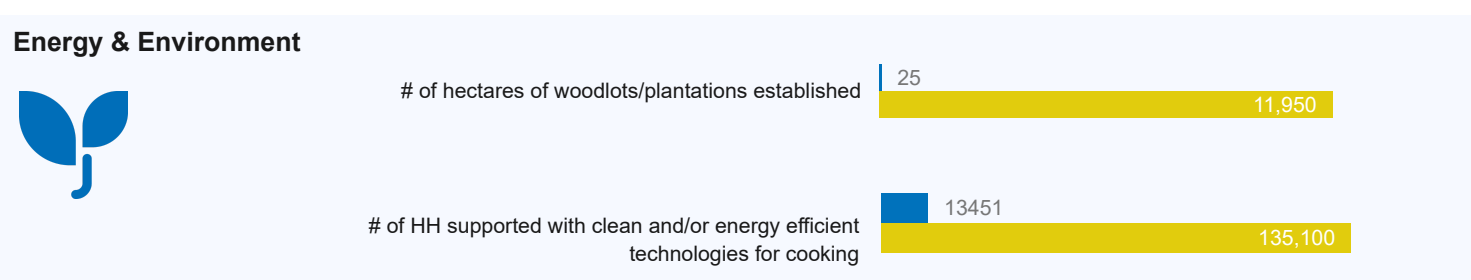
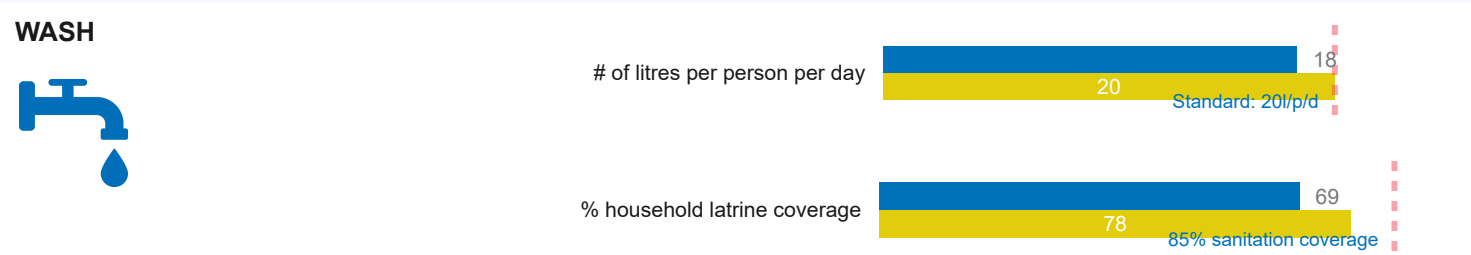
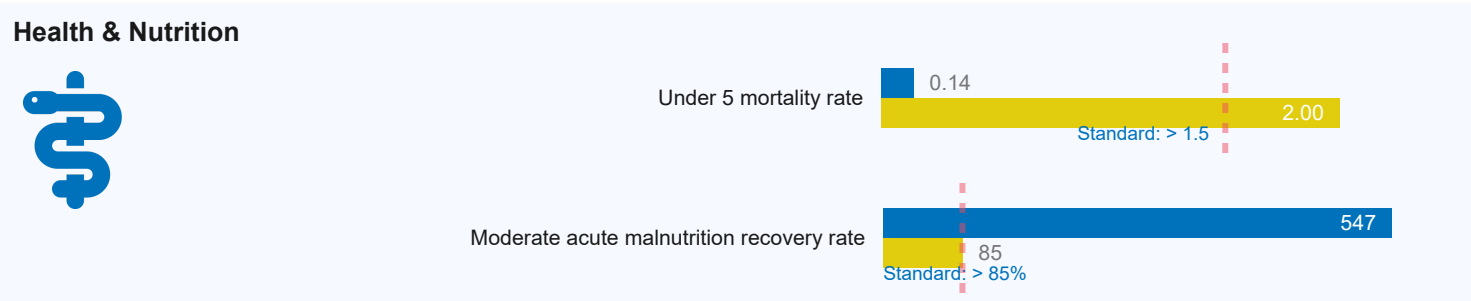
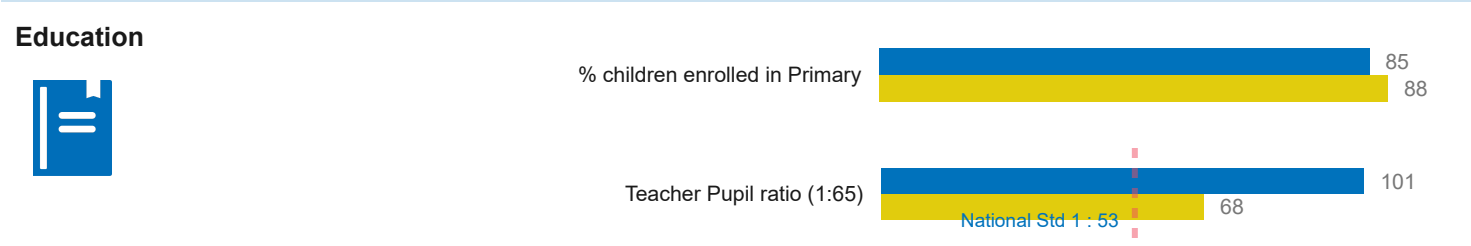
Kyegegwa DLG, NFA, and OPM



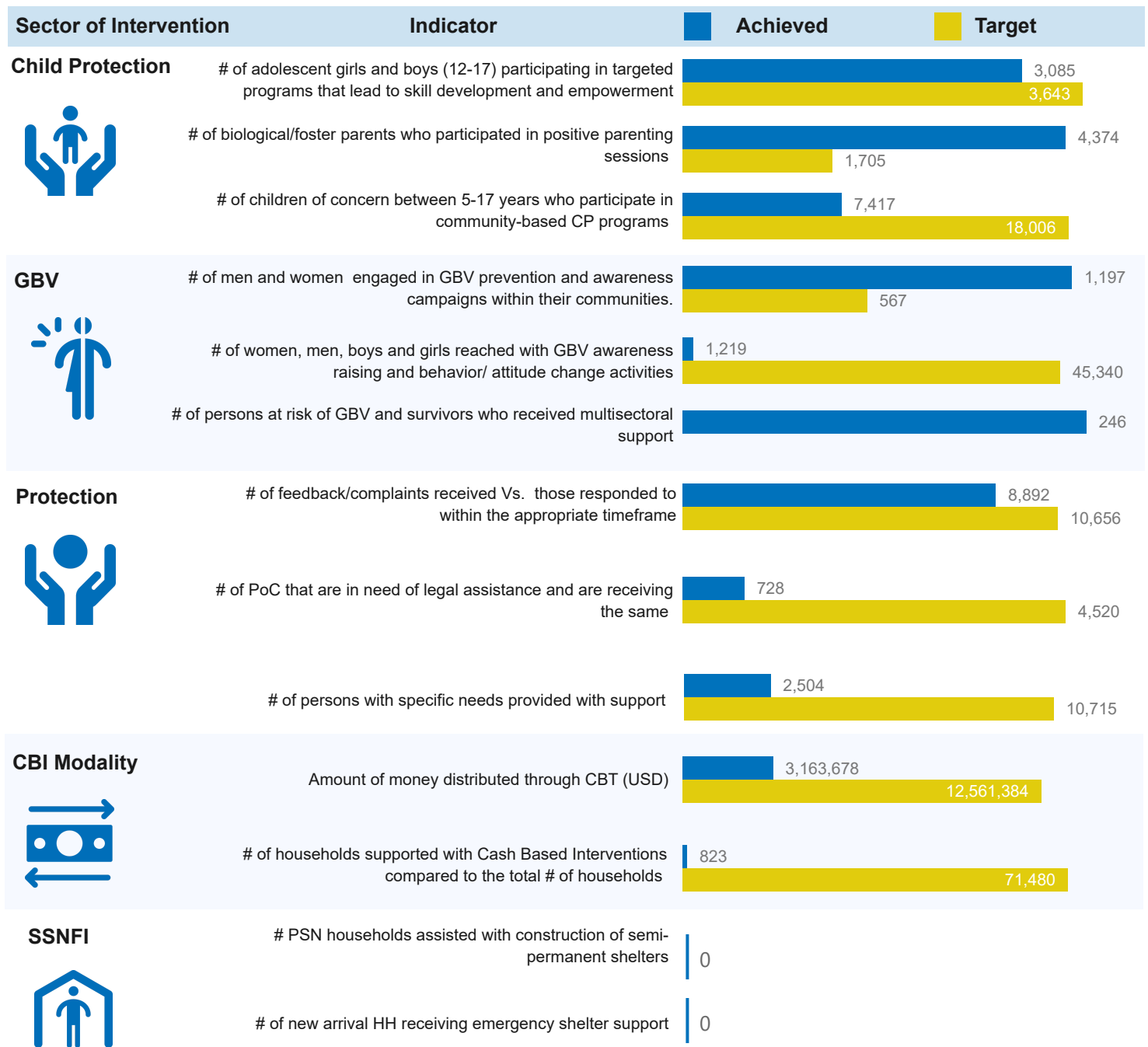
Kyaka II Performance Snapshot

Population Refugees and asylum-seekers	42 Partners in Response	1 RLOs/CBOs	5 Sum of Government Partn...	4 Sum of UN Agencies
136,913 Refugees and asylum seekers	<i>On average two performance indicators are reflected per sector against the annual 2024 RRP targets</i>		6 National NGOs	26 International NGOs
35,809 Households				

Sector of Intervention	Indicator	Achieved	Target
------------------------	-----------	----------	--------



Kyaka II Performance Snapshot



Partner Presence by Q2 2025, UN Agencies and Government

National NGOs

ACORD, AWYAD, KRRC, Nsamizi, Post Bank, Ripple Effect, and TPO

Refugee Led Organizations (RLOs)

YARID

International NGOs

ADRA, AHA, AIRD, Alight, AVSI, CARE, DRC, Equity Bank, FCA, FRC, GNIU, HI, IRC, LWF, MTI, PWJ, SCI, URCS, WCH, and WVI

UN Agencies

IOM, UNFPA, UNHCR, and WFP

Government

Kyegegwa DLG, NFA, and OPM

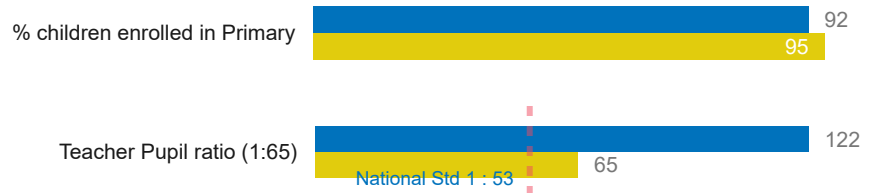


Kyangwali Performance Snapshot

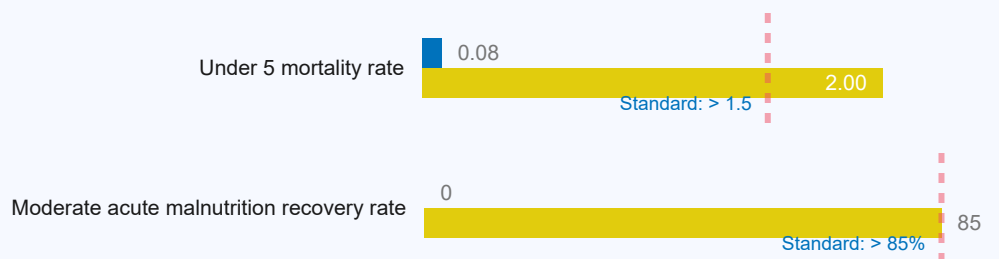
Population Refugees and asylum-seekers	799 Partners in Response	44 RLOs/CBOs	87 Sum of Government Partn...	60 Sum of UN Agencies
154,029 Refugees and asylum seekers	<i>On average two performance indicators are reflected per sector against the annual 2024 RRP targets</i>		179 National NGOs	429 International NGOs
46,067 Households				

Sector of Intervention	Indicator	Achieved	Target
------------------------	-----------	----------	--------

Education



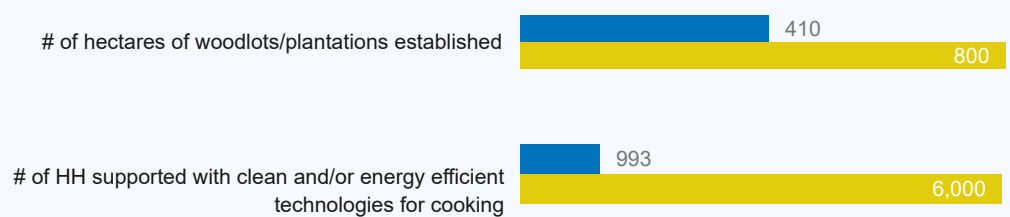
Health & Nutrition



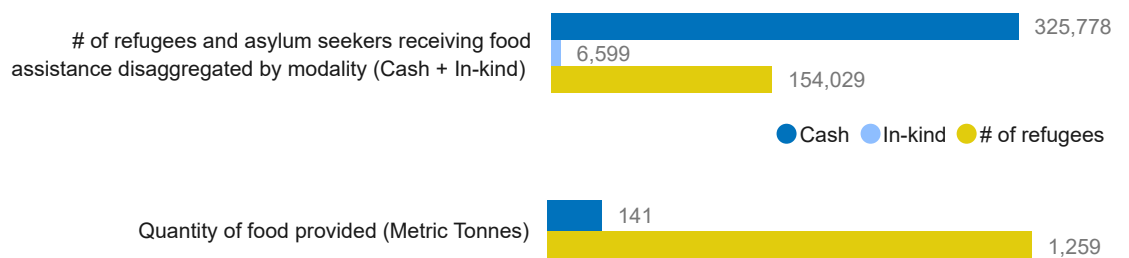
WASH



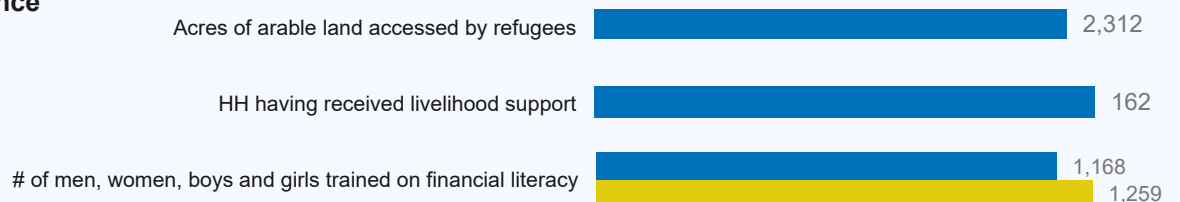
Energy & Environment



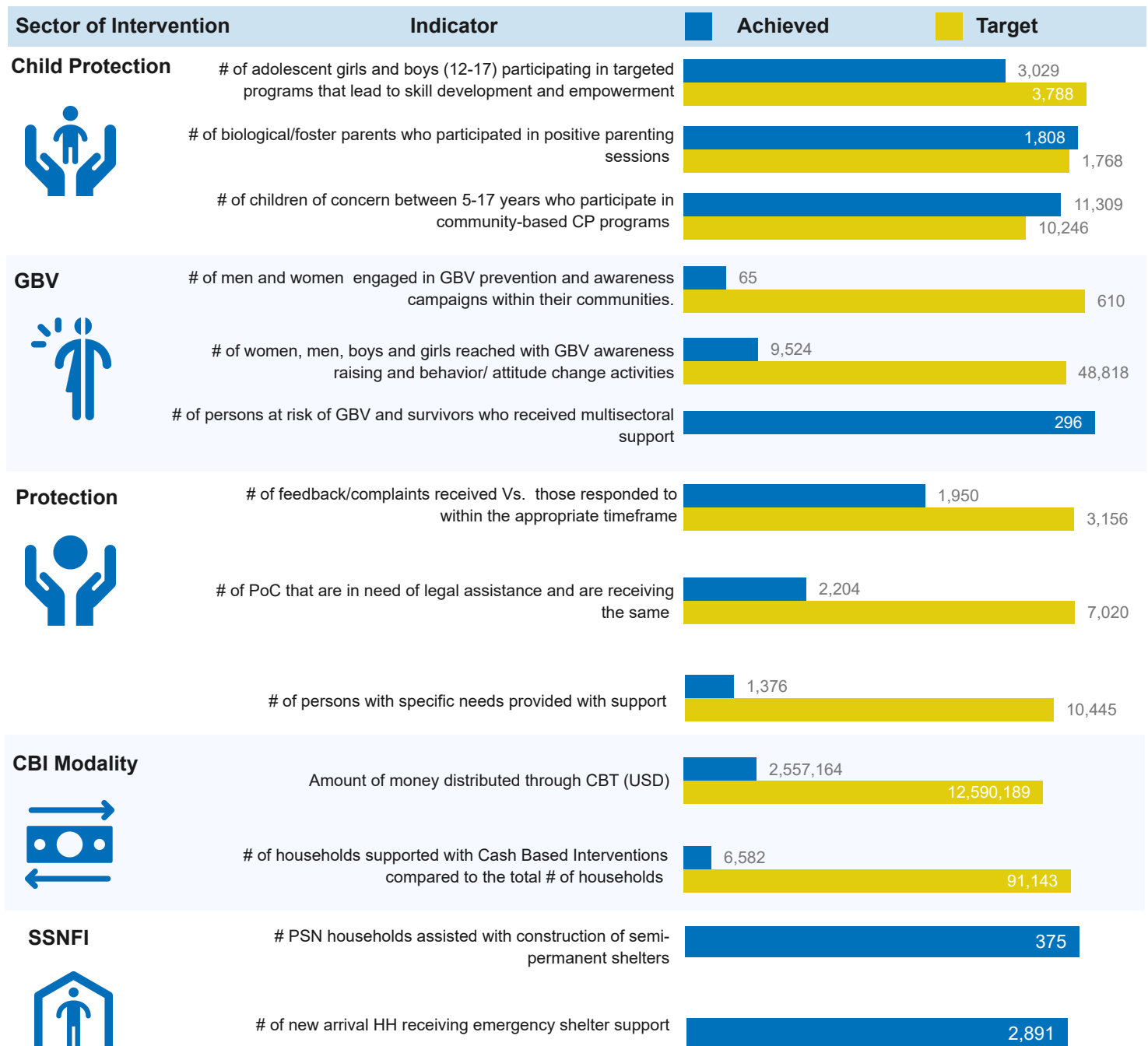
Food Security



Livelihoods & Resilience



Kyangwali Performance Snapshot



Partner Presence by Q2 2025, UN Agencies and Government

National NGOs

HAF Uganda, HFU, Nsamizi, Post Bank, and TPO

Refugee Led Organizations (RLOs)

YARID

International NGOs

AARJ, ACF, AIRD, Alight, Airtel, AVSI, CARE, CRS, Equity Bank, FRC, HI, LWF, MTI, NRC, SCI, URCS, WCC, and WCH

UN Agencies

UNHCR and WFP

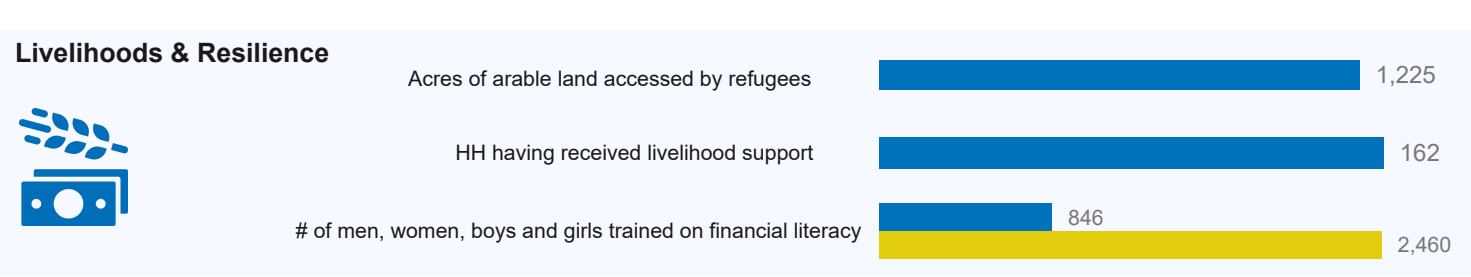
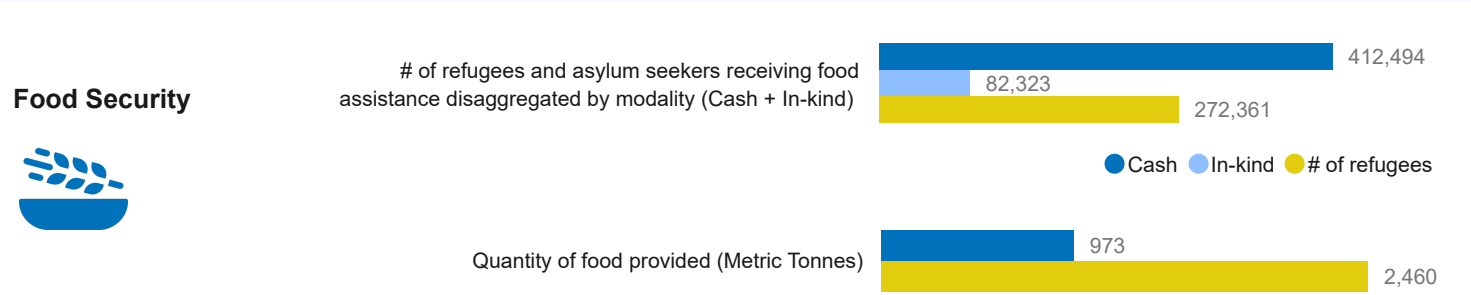
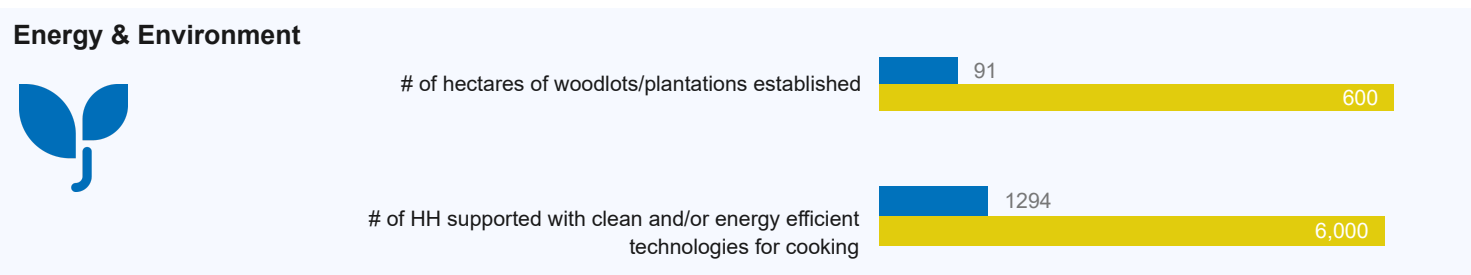
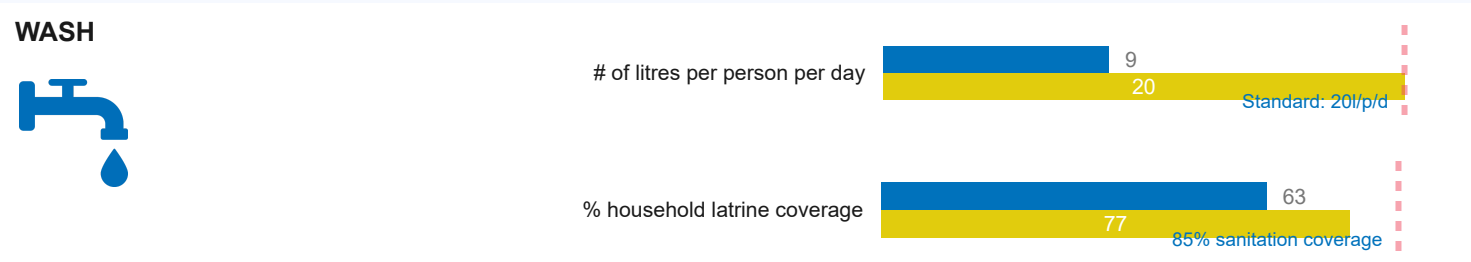
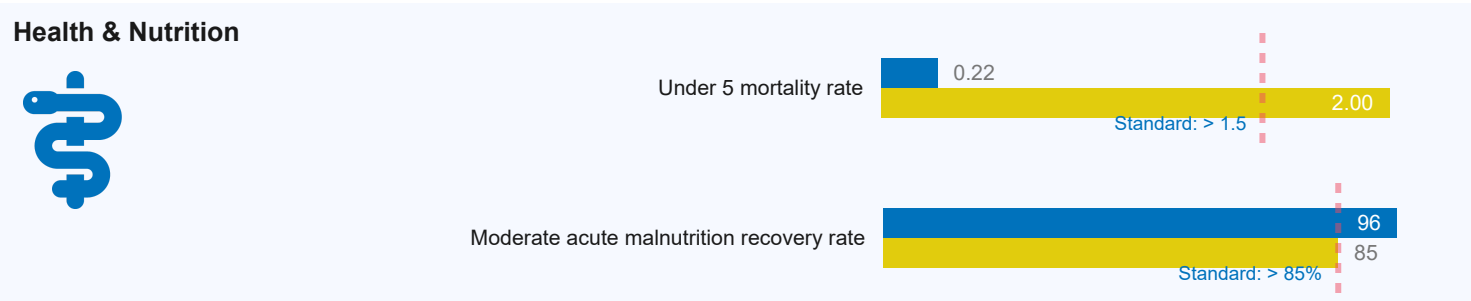
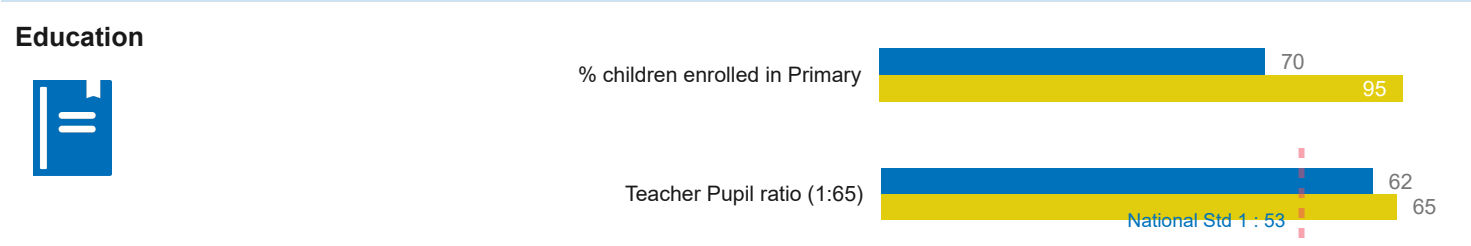
Government

Kikuube DLG, NFA, and OPM

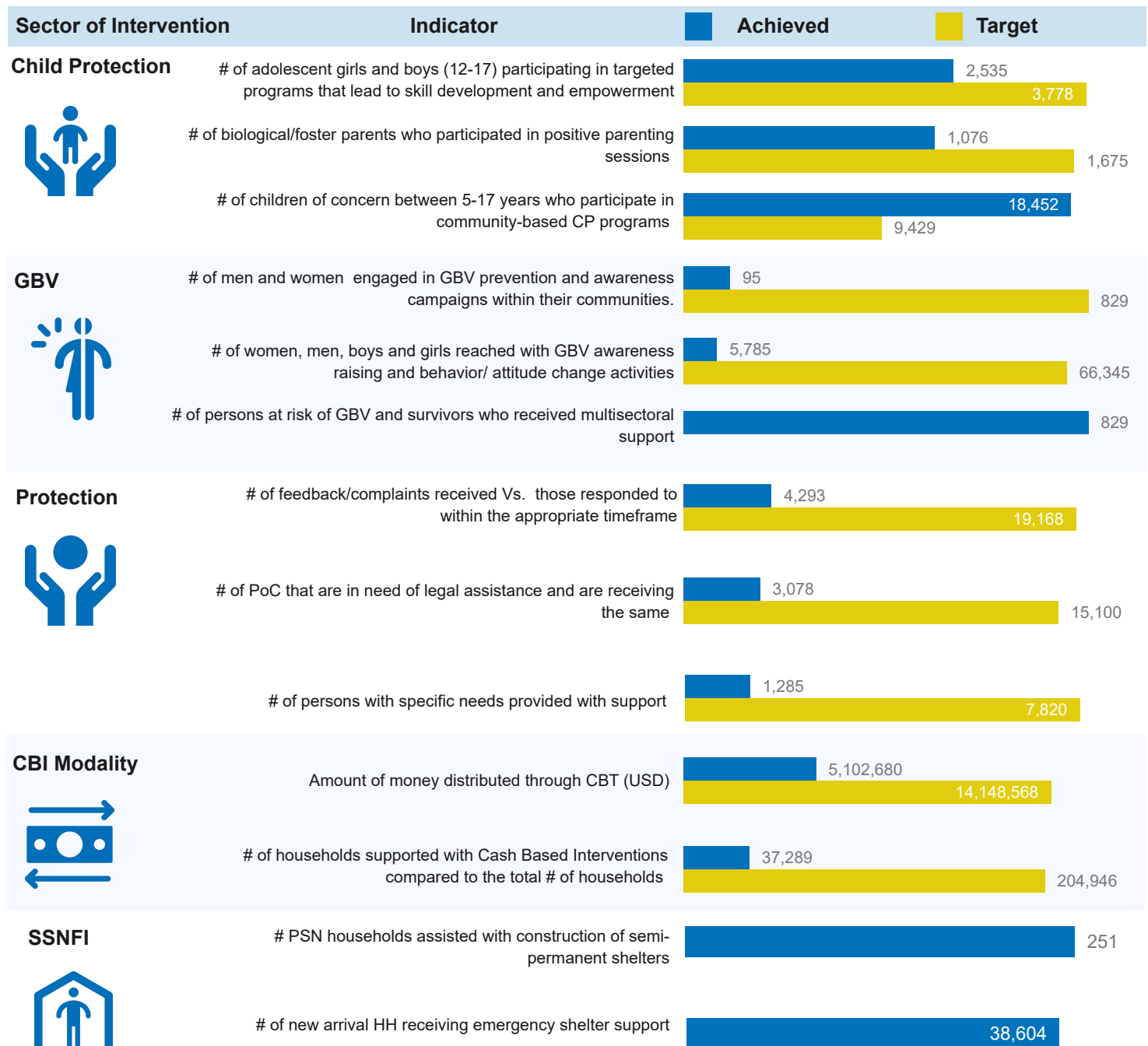
Nakivale Performance Snapshot

Population Refugees and asylum-seekers	799 Partners in Response	44 RLOs/CBOs	87 Sum of Government Partn...	60 Sum of UN Agencies
272,361 Refugees and asylum seekers	<i>On average two performance indicators are reflected per sector against the annual 2024 RRP targets</i>		179 National NGOs	429 International NGOs
103,156 Households				

Sector of Intervention	Indicator	Achieved	Target
------------------------	-----------	----------	--------



Nakivale Performance Snapshot



Partner Presence by Q2 2025, UN Agencies and Government

National NGOs

ACORD, AWYAD, HFU, N&T, Nsamizi, SAU, and TPO

Refugee Led Organizations (RLOs)

YARID

International NGOs

ACF, AIRD, Alight, CARE, COVOID, DRC, Equity Bank, FCA, FRC, GF, HI, HIJRA, IsraAID, MSF, MTI, NRC, RGF, SCI, Swisscontact, TTR, URCS, WCC, and WCH

UN Agencies

IOM, UNFPA, UNHCR, UNWOMEN, and WFP

Government

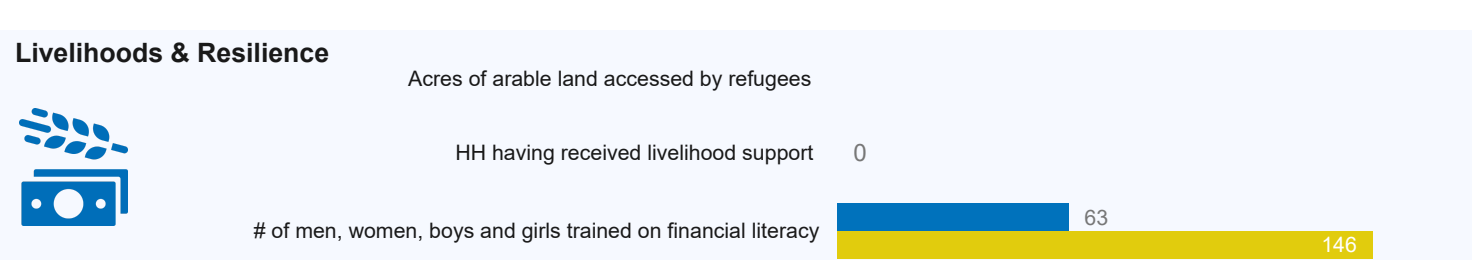
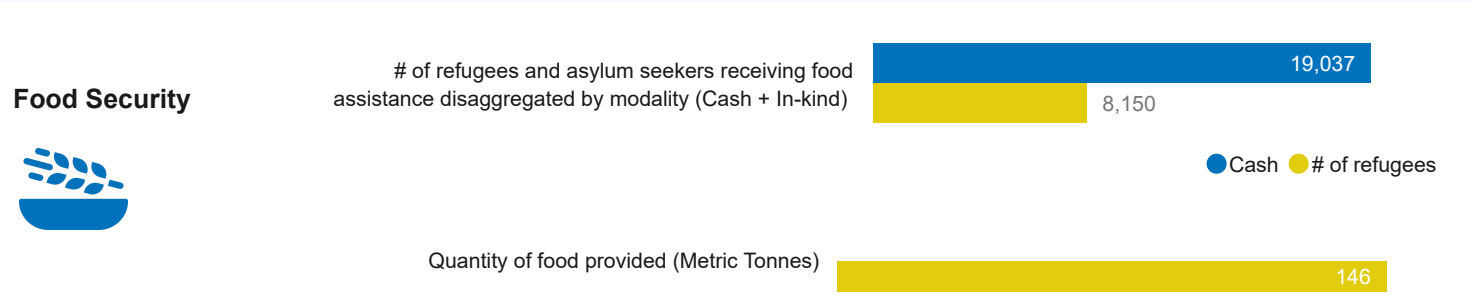
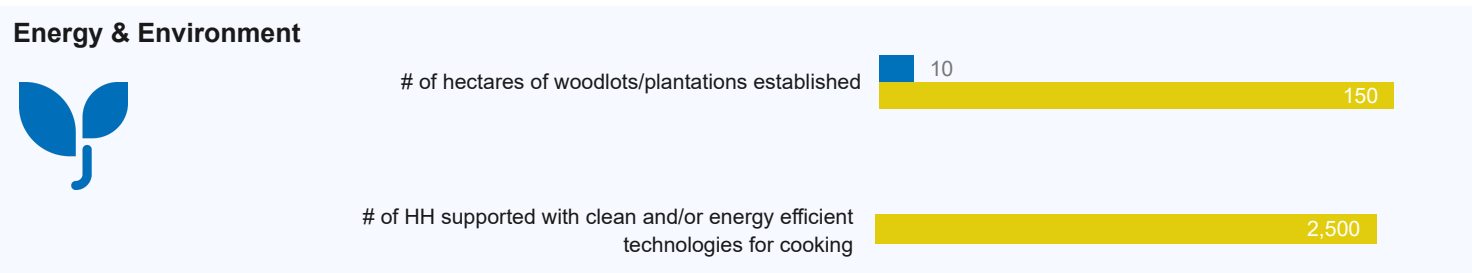
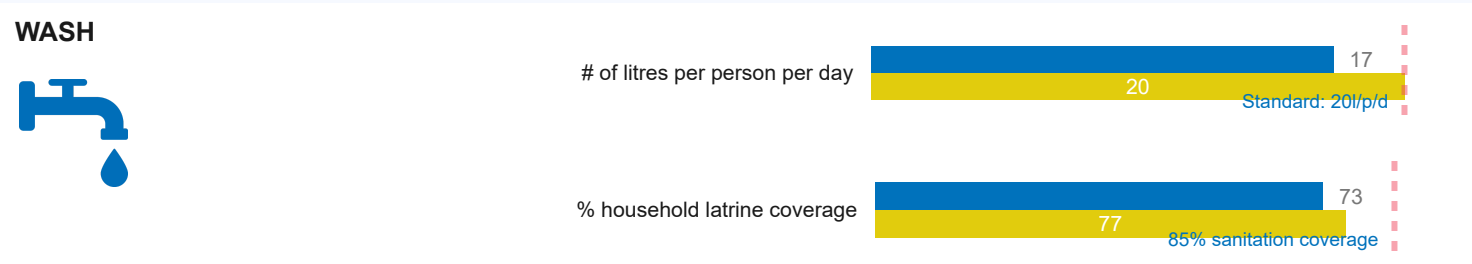
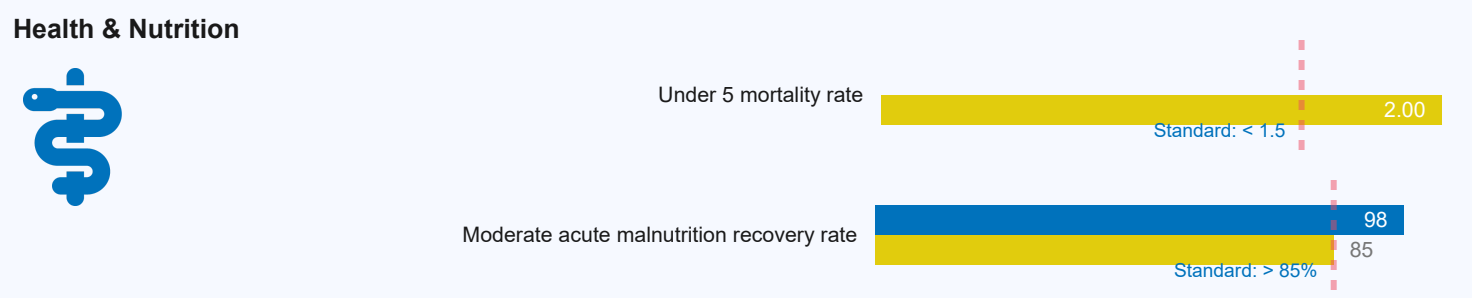
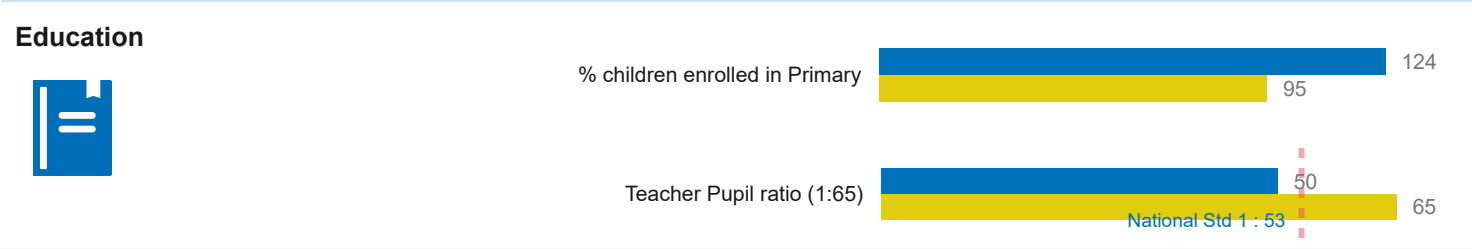
Isingiro DLG, NFA, and OPM



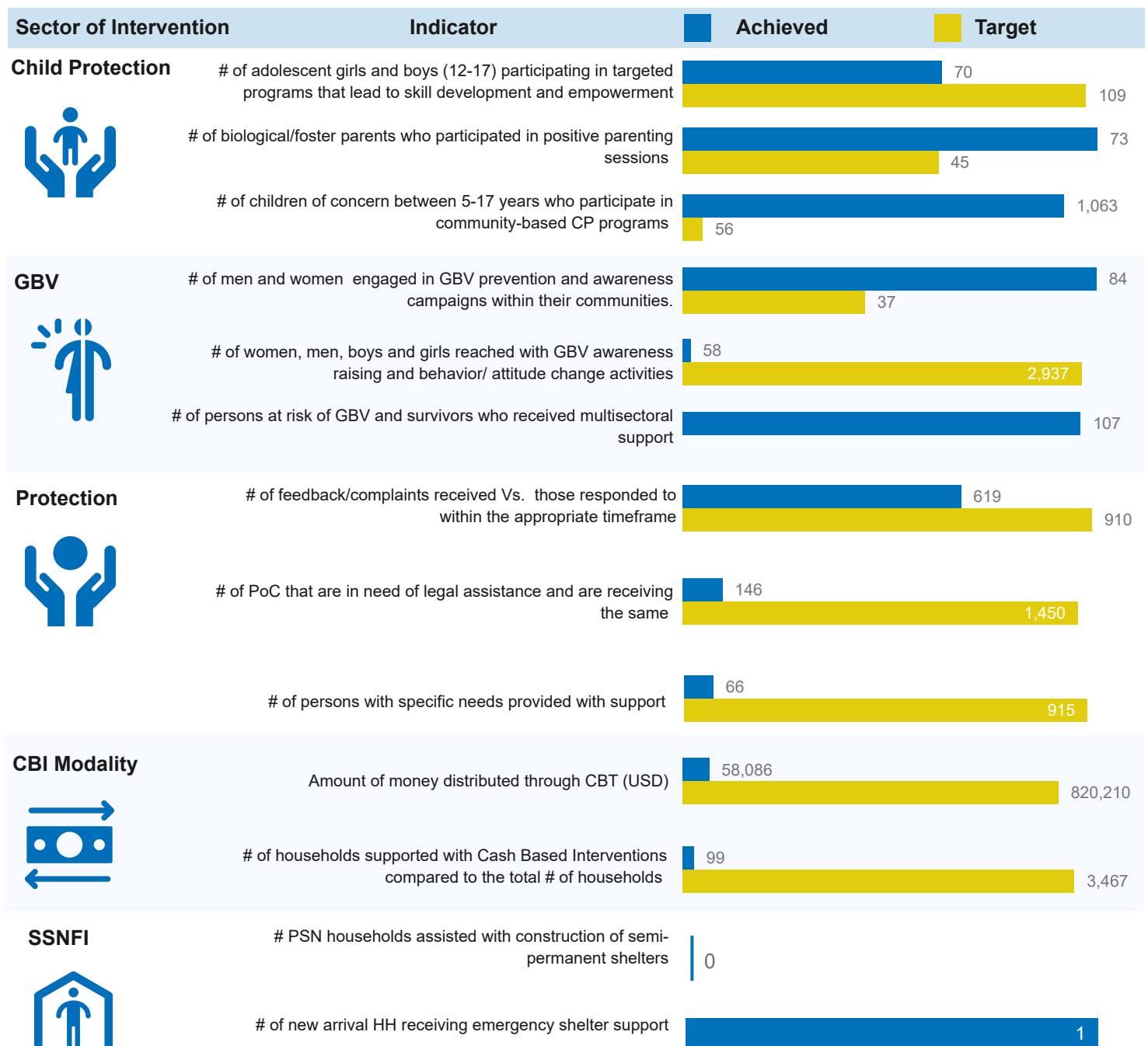
Oruchinga Performance Snapshot

Population Refugees and asylum-seekers	799 Partners in Response	44 RLOs/CBOs	87 Sum of Government Partn...	60 Sum of UN Agencies
8,150 Refugees and asylum seekers	<i>On average two performance indicators are reflected per sector against the annual 2024 RRP targets</i>		179 National NGOs	429 International NGOs
1,733 Households				

Sector of Intervention	Indicator	Achieved	Target
------------------------	-----------	----------	--------



Oruchinga Performance Snapshot



Partner Presence by Q2 2025, UN Agencies and Government

National NGOs

HFU, N&T, Nsamizi, SAU, and TPO

Refugee Led Organizations (RLOs)

YARID

International NGOs

ACF, AIRD, Alight, DRC, Equity Bank, FRC, HIJRA, MSF, MTI, SCI, URCS, WCC, and WCH

UN Agencies

UNHCR and WFP

Government

Isingiro DLG and OPM

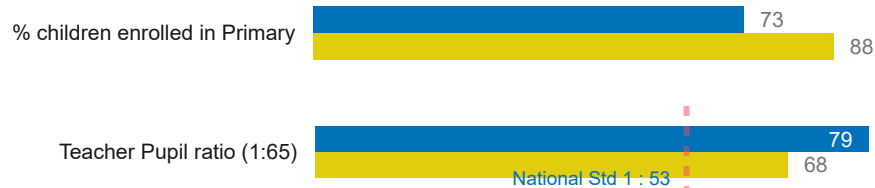


Rwamwanja Performance Snapshot

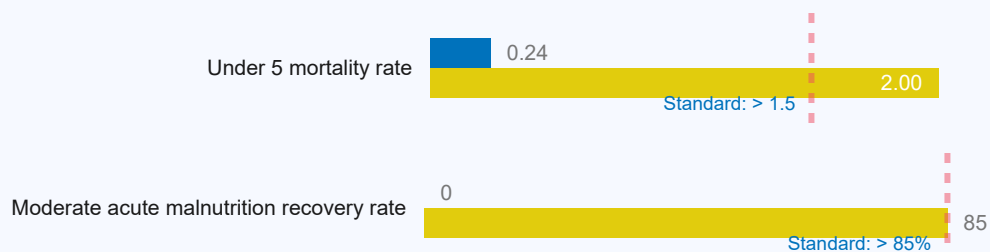
Population Refugees and asylum-seekers	27 Partners in Response	0 RLOs/CBOs	6 Sum of Government Partn...	3 Sum of UN Agencies
105,099 Refugees and asylum seekers	<i>On average two performance indicators are reflected per sector against the annual 2024 RRP targets</i>		6 National NGOs	12 International NGOs
25,100 Households				

Sector of Intervention	Indicator	Achieved	Target
------------------------	-----------	----------	--------

Education



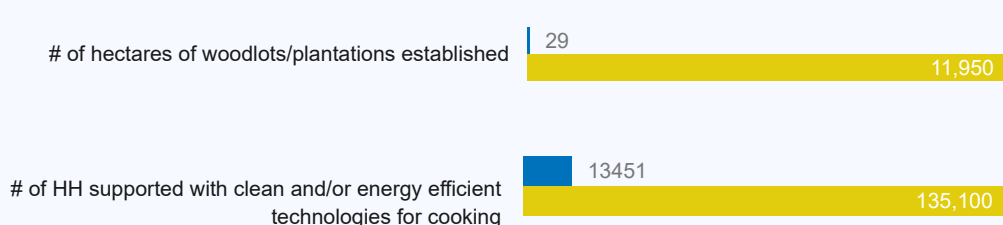
Health & Nutrition



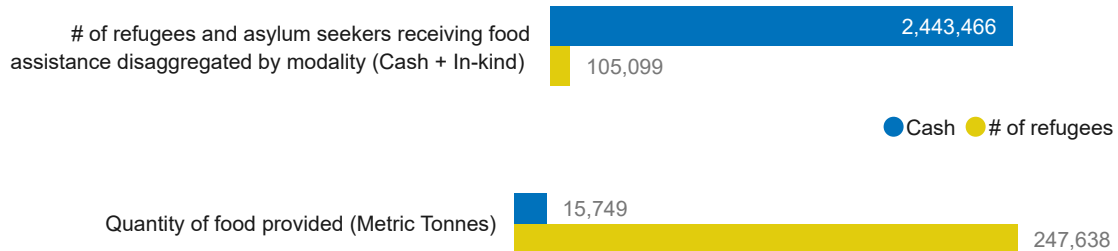
WASH



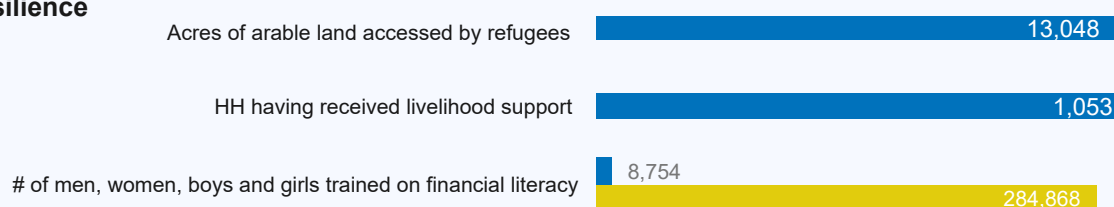
Energy & Environment



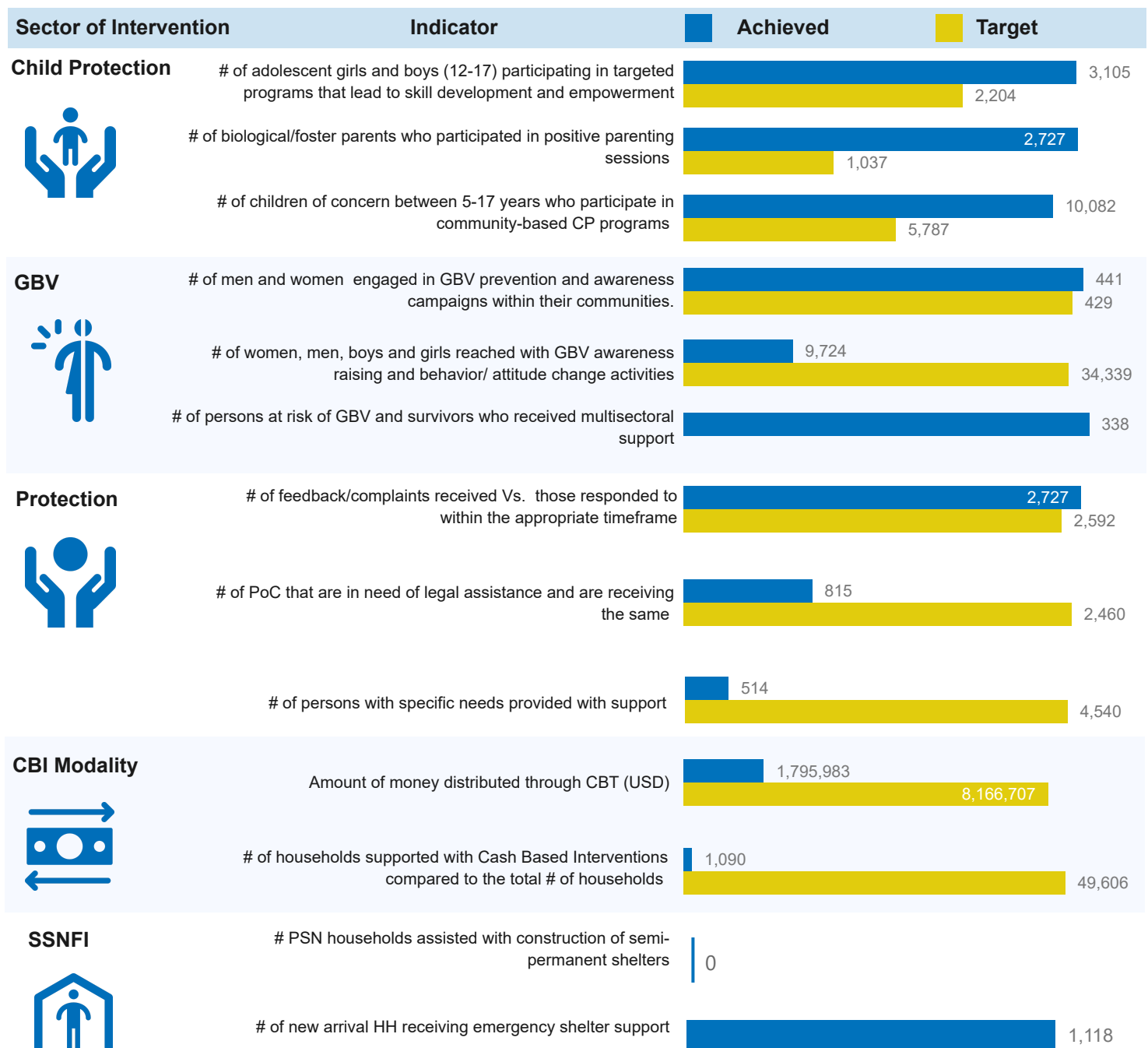
Food Security



Livelihoods & Resilience



Rwamwanja Performance Snapshot



Partner Presence by Q2 2025, UN Agencies and Government

National NGOs

AWYAD, Nsamizi, Post Bank, and TPO

International NGOs

ADRA, AIRD, Alight, AVSI, Equity Bank, FCA, HI, LWF, MTI, SCI, TTR, URCS, WCC, and WVI

UN Agencies

UNHCR, and WFP

Government

Kamwenge DLG, NARO, NFA, and OPM