



CHAD: FORCIBLY DISPLACED PERSONS



December 2025

KEY FIGURES ON FORCIBLY DISPLACED PERSONS

2,161,990

Total

1,502,264

Refugees

9,376

Asylum seekers

225,689

Internally displaced persons (Lake)

424,661*

Returned migrants

Others keys figures

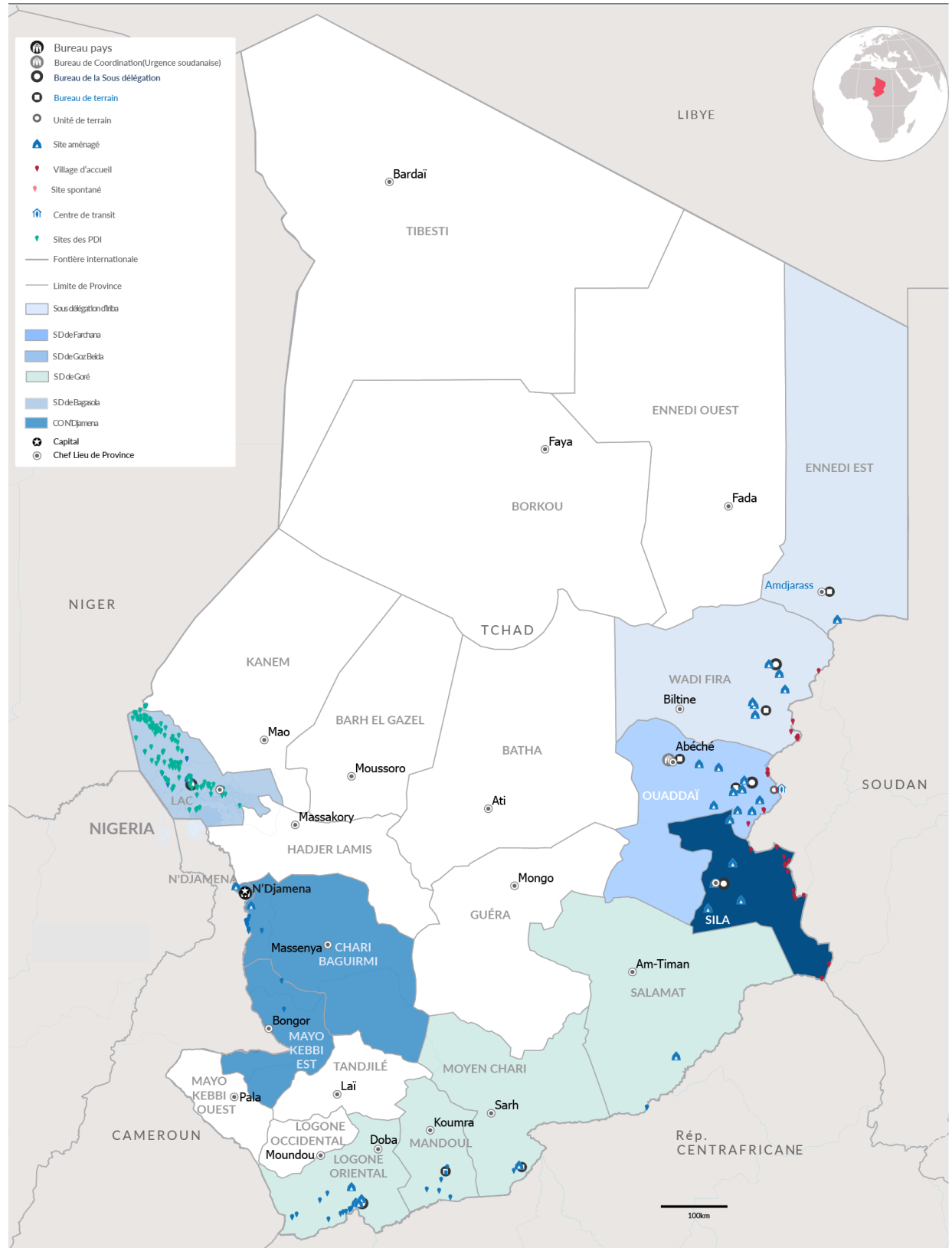
18,887

Cameroonian refugees assisted for voluntary repatriation

902,814

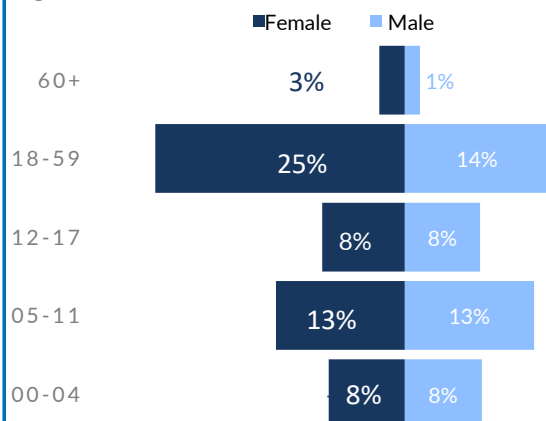
New arrivals from Sudan since April 2023

* Returned migrants at risk of statelessness from: Niger, CAR, and Sudan.

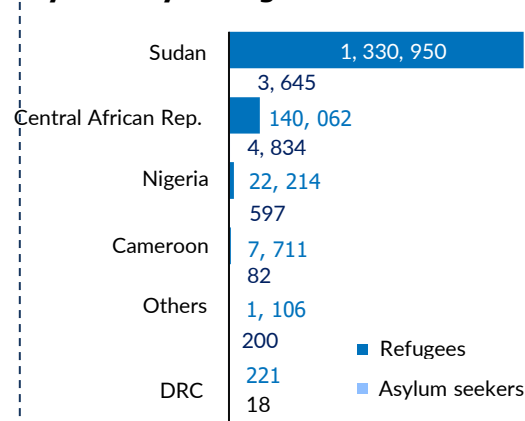


REFUGEES AND ASYLUM SEEKERS

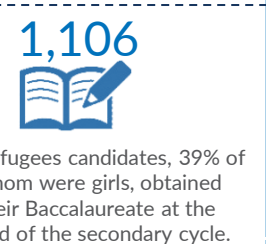
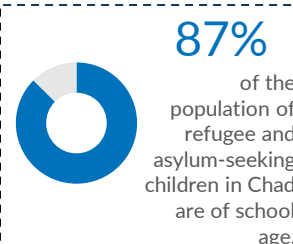
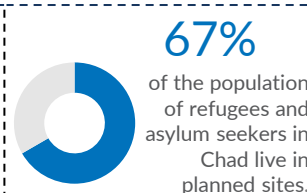
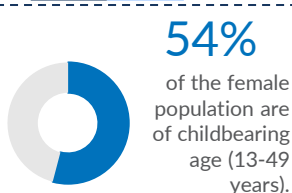
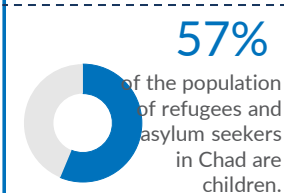
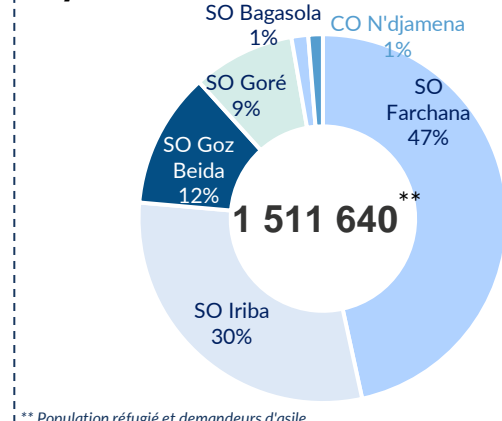
Age Cohort



By Country of Origin



By Sub Office





CHAD: REFUGEES AND ASYLUM SEEKERS

December 2025



1, 511, 640

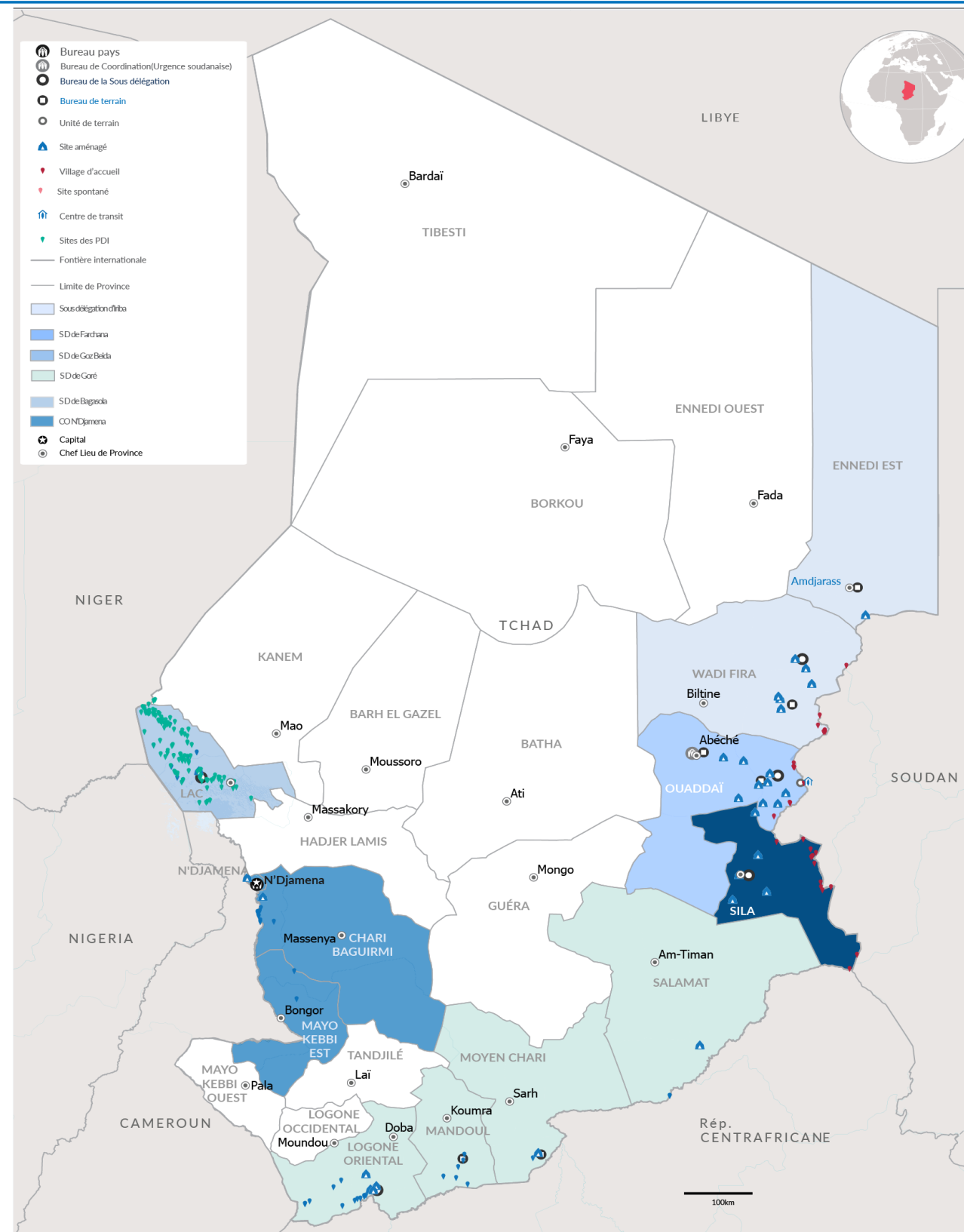
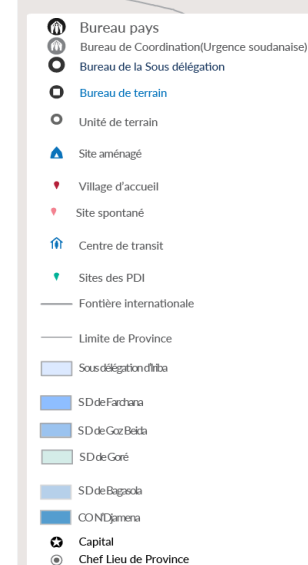
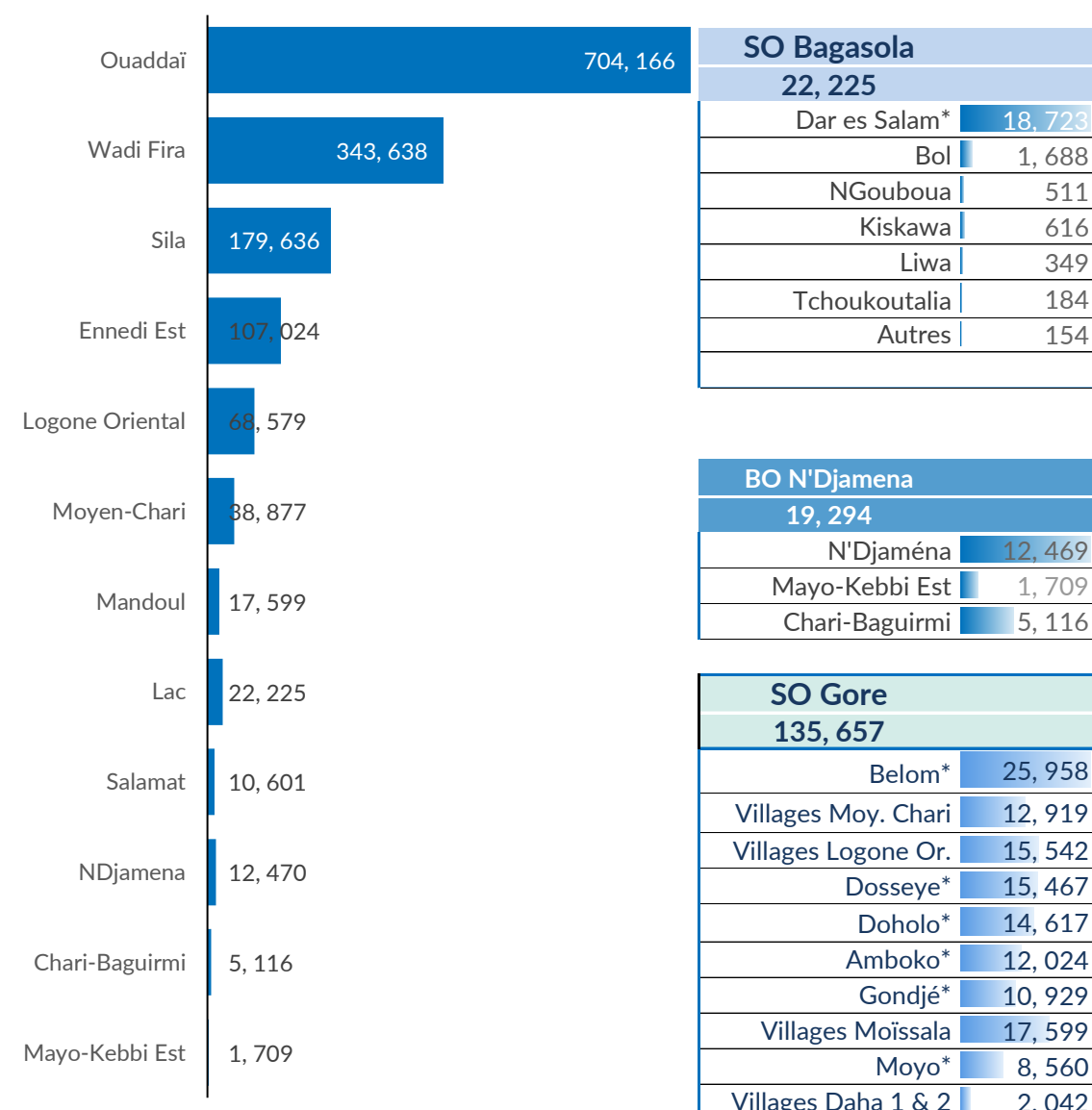
INDIVIDUALS



374, 197

HOUSEHOLDS

By Province



Abeche Coordination Office

1, 334, 464

SO Iriba	
450, 662	
Touloum*	63, 005
Am Nabak*	33, 828
Iridimi*	42, 194
Goudrane	49, 698
Frontières	9, 565
FO Amdjarass	
107, 024	
Oure Cassoni*	107, 024
FO Guéréda	
145, 348	
Mile*	62, 134
Kounoungou*	28, 845
Koursigue*	13, 109
Marasabre	35, 297
Birak	2, 761
Koulbous	3, 202

SO Farchana	
704, 166	
Farchana*	56, 285
Aboutengué*	48, 846
Metche*	43, 298
Gaga*	40, 675
Adre	236, 412
Border(Ouaddaï)	26, 934
FO Abeche	
34, 436	
Kouchaguine- M.*	25, 047
Abéché et Abougoudam	9, 389
FO Hadjer Hadid	
217, 280	
Bredjing*	57, 603
Alacha*	53, 165
Treguine*	31, 568
Arkoum*	56, 505
Dougui*	18, 439

Principales nationalités(Ref. & ASY)

1, 334, 595

SUDANESE

Essentially located in the 21 planned sites and 1 reception village in the East and in urban areas.

144, 896

CENTRAL AFRICANS

Located in the six camps, sites, and host villages in the South and in urban areas.

22, 811

NIGERIANS

Primarily located in the Dar Es Salam camp and host villages in the Lake Province as well as in urban areas.

7, 793

CAMEROONIANS

Mainly composed of populations who fled intercommunal clashes in the Logone and Chari department in Cameroon. They are located in the two camps around N'Djamena and on the banks of the Logone River.

1, 545

OTHER NATIONALITIES

Outside the major nationalities, there are individuals of various origins: Algeria, Benin, Burkina Faso, Burundi, Côte d'Ivoire, Republic of the Congo, Egypt, Eritrea, Ethiopia, Gabon, Libya, Mali, Islamic Republic of Iran, Rwanda, Senegal, Somalia, South Sudan, Palestine, Yemen.

KEY FIGURES ON THE SUDANESE CRISIS

902, 814

New arrivals from Sudan 2023.

409, 819

Sudanese refugees in Chad before the 2023 crisis.

SO Goz Beida

179, 636

Goz Amir*	46, 339
Zabout*	55, 417
Djabal*	38, 704
Kerfi	11, 914
Border(Sila)	27, 262

* Planned site