

## KEY FIGURES

**44,282**

Asylum seekers since influx began in December 2013.

**3,295**

UAMS in Kakuma Camp.

**28**

SGBV survivors assisted with NFIs by UNHCR

**13.8**

Litres of water provided per person per day in Kakuma 4.

**5.2%**

Decline in the malaria incidence rate as compared to the previous week.

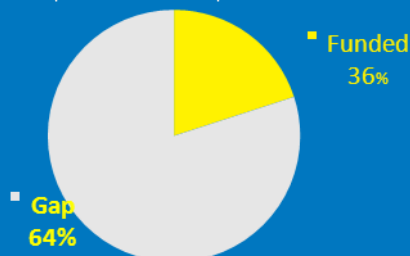
**5,594**

Number of roofed durable shelters in Kakuma 4.

## FUNDING

**USD 52 MILLION**

Requested for the operation



## PRIORITIES

- Continuously engage the youth and community leaders to enhance peace among communities.
- Relocating vulnerable families to T-shelters in Kakuma 4.

## KENYA

### KAKUMA OPERATIONAL UPDATE

21<sup>ST</sup> – 26<sup>TH</sup> NOVEMBER 2014

## HIGHLIGHTS

- As at 26<sup>th</sup> November 2014, Kakuma had received 44,282 asylum seekers from South Sudan. This brings the total camp population to 179,126. As at 23<sup>rd</sup> November 177,221 refugees had been registered by UNHCR and DRA, with South Sudanese making up 49% of the registered population.
- UNHCR in coordination with DRA, the Government and partner agencies officially launched the 16 Days of Activism campaign on 25<sup>th</sup> November in Kakuma 4. The global event which is marked from 25<sup>th</sup> November to 10<sup>th</sup> December celebrates people all over the world who have survived violence and those who have dedicated their efforts to end GBV. The theme of the campaign is "Protecting Rights, Preserving Childhood; Working Together to Address Child Marriage." There were performances ranging from plays, cultural dances and a puppet show which relayed the theme and key messages of the campaign. Speeches were also given by representatives from the refugee community, UNHCR, agencies and the Government.

The banner with the 16 Days of Activism theme is displayed in Kakuma 4, at the Hope Primary School where the event was launched. UNHR/C.Wachinya



- A filming crew from the UNHCR Regional Hub fielded a week long mission to Kakuma to gather content for a short film on the South Sudan emergency. The production has been planned ahead of the upcoming South Sudan regional appeal launch and the first anniversary of the emergency on December 15<sup>th</sup>.



# UPDATE ON ACHIEVEMENTS

## Operational Context

- UNHCR has continued to field border monitoring visits to Nadapal daily. The team comprises of the Protection, Community Services, Registration, Resettlement, RSD and Field Units and these missions are conducted with the aim of ensuring that asylum seekers received at the border have unhindered access to asylum in Kenya and are treated humanely. The trend of daily arrivals from Nadapal has declined significantly over the past months, with the number of new arrivals ranging between 20 – 30 arrivals every week. The situation is being monitored closely for any possible surge of arrivals that may require revision of the frequency of convoys from the current weekly trips (scheduled on Fridays).
- UNHCR in coordination with DRA and partners has continued to engage the refugee community leaders and update them on various issues ranging from the food situation to measures in place to ensure security and safety is enhanced in the camp. This is in light of the 50% reduction of food rations by WFP and the need to ensure that the refugees are confident that UNHCR and partners are doing all that is possible to ensure their wellbeing. The 2<sup>nd</sup> General Food Distribution (GFD) cycle of November was conducted to completion without any incidents. The next distribution is scheduled for the first week of December.

## Achievements



### Protection

#### Achievements and Impact

- As at 24<sup>th</sup> November, 1,062 UAMs (including 782 South Sudanese UAMs) and 4,175 separated children had been registered since the influx begun. This brings the cumulative number of registered UAMs and SC in Kakuma to 3,295 and 13,391 respectively. 15 BIAs were carried out at the reception centre and 60 in the community. UNHCR Child Protection unit will oversee the submission of these cases for follow up and service delivery by various child protection agencies in the camp.
- Only 4 UASC were received at the reception centre during the reporting week, compared to 16 received in the previous week. Additionally, 51 UAMs were placed formally in the community with foster parents, drastically reducing the number of UAMs at the reception centre by half.
- No new SGBV cases were reported during the reporting week. 33 home visits were conducted and referrals initiated accordingly for cash assistance, arbitration, IGA support, NFIS, counseling services and shelter. Additionally, 28 survivors were assessed during the week and issued with assorted NFIs.

#### Identified Needs and Remaining Gaps

- UNHCR's Protection Team has documented an increasing number of cases where Immigration officials are charging visa fees for South Sudan asylum seekers on the grounds that they are travelling back and forth between South Sudan and Kenya. This remains a major challenge for access to asylum for South Sudanese despite numerous interventions by UNHCR, DRA and local authorities to appeal for this practice to cease immediately. UNHCR has expressed concern over this practice which is unwarranted and goes against Kenyan and International law. In addition to these charges, the asylum seekers have to pay for a temporary travel permit on the South Sudan side for clearance to cross the border.



### Health

#### Achievements and Impact

- The "Balanced Score Card" was rolled out on 25<sup>th</sup> November with the support of the Regional Health Information Officer and will end on 28<sup>th</sup> November 2014. The Score Card is a performance indicator which will be used periodically to identify gaps in the health care service delivery, monitor trends in service delivery over time, identify

and document good practices and identify health workers' training needs, resource gaps and need for technical support.

- The overall health profile of the refugees, both older population and new arrivals remained stable with no abnormal morbidity and mortality rates experienced. A total of 9 deaths including 4 under-fives (due to pneumonia, malaria and malnutrition) were reported translating to an under-five mortality rate of 0.2/10,000/day and a crude mortality rate of 0.07/10,000/day compared to UNHCR standard of  $\leq 1/10,000^*$  and  $\leq 0.5/10,000^*/\text{day}$  respectively.
- The major diseases of public health importance were respiratory tract infections, malaria and watery diarrhea. A total of 1,930 new cases of malaria were seen compared to 2,074 new cases seen in the previous week. This was a 5.2% decline in the incidence rate and a case fatality rate drop from 0.75% in the previous week to 0.3% (standard is  $<1$ ). Malaria prevention and control interventions, including the distribution and proper use of Long Lasting Insecticide Treated Nets (LLITN), prompt case management, larviciding and Indoor Residual Spraying (IRS) are on-going to avert an outbreak.
- A total of 21 assorted surgeries and 67 pediatric specialized services were provided by the African Medical and Research Foundation (AMREF) specialists during their outreach program in Kakuma from 17<sup>th</sup> - 21<sup>st</sup> November 2014.

### Identified Needs and Remaining Gaps

- The daily average consultations per qualified clinician were 1:83 during the reporting week which is above the UNHCR standard of 1: <50. The high number of patients seen per clinicians per day compromises the quality of health care provided to patients. The health sector relies heavily on unqualified refugee incentive workers who constitute about 85% of the IRC clinical services workforce.
- Incidence rates for both malaria and diarrhea were within the usual seasonal levels. The low incidence rate notwithstanding, the absolute number of new cases of malaria is likely to increase exponentially due to the high camp population coupled with the ongoing rains.



## Food Security and Nutrition

### Achievements and Impact

- During the reporting period, 70 children between 6 and 59 months were screened by weight for height at the reception centre. There was a reduction in proportion of children found with malnutrition compared to the previous week. The proportion of those found with SAM was 8.6% down from 24% in the previous week and GAM at 27.1% from 31% in the previous week. Similarly, there has been a steady reduction in the number of new admissions to the Community Therapeutic Care (CTC/ TFP) for severely malnourished children and to the Supplementary Feeding Program (SFP) for moderately malnourished children.

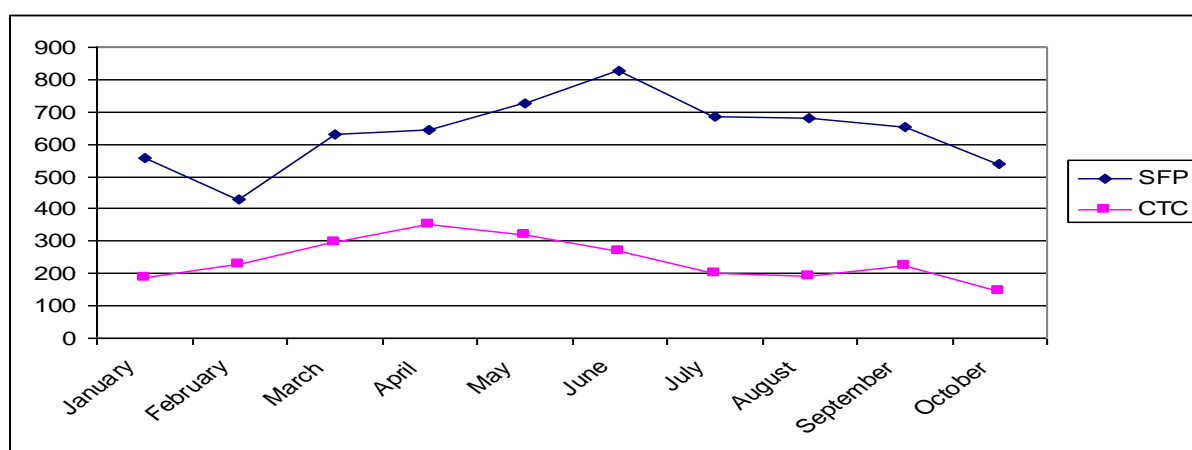


Figure 2: Trends of new Admissions to CTC and SFP

- Contrary to the anticipation that there would be unrest due to the food ration cuts, the GFD went on without any incidents and the general outlook is that the coming distribution scheduled for December will also go on without any issues. However, it remains of great concern that as time goes by and the refugees start to feel the effect, they may start to react to these food cuts. As such, it is important that the community continues to be engaged by UNHCR and

all partners even as WFP continues to do what it can to ensure the situation returns to normal by January/ February 2015.

## Water and Sanitation

### Achievements and Impact

- NRC has constructed a total of 1,590 family shared latrines in Kakuma 4. A total of 522 household latrines have also been constructed. One family shared latrine is used by five households and this brings the latrine coverage in Kakuma 4 to 23.8% and latrine to user ratio at 1:20.
- Indoor Residue Spraying (IRS) against malaria is ongoing in all the Kakuma camps, targeting 34,200 households within the month of November.

### Identified Needs and Remaining Gaps

- Per capita water distribution in Kakuma 4 is currently at 13.8l/p/d which is below the UNHCR standard of 20l/p/d. UNHCR in coordination with LWF is continuing with measures to improve supply by repairing destroyed pipes, checking water leakages and also working on the installation of three 100,000-litre elevated steel tanks in Kakuma 4.
- There are only 94 community hygiene promoters serving the entire camp and out of these, 21 serve Kakuma 4 alone. As much as continuous and regular clean-up activities and hygiene campaigns have been conducted, the results are slow and minimal. The ratio of hygiene promoters to beneficiaries is 1: 2,500 which is extremely high. The need for more promoters to enhance behavioural change and maintain proper sanitation practices at the site is high.

## Shelter and NFIs

### Achievements and Impact

- NCKC roofed 210 shelters in Kakuma 4 in the past week, resulting in a cumulative total of 5,594 durable shelters at the site. About 75% of the targeted shelters have been roofed ensuring that the number of refugees with adequate housing facilities is increased. The current shelter model that has been adopted is made with eucalyptus frames that act as the support structure for the mud brick walls. A further 10 transitional shelters (T-shelters clad with tarpaulin) were constructed for vulnerable families and those affected by the recent floods. A cumulative total of 154 T-shelters have been constructed at the site.

### Identified Needs and Remaining Gaps

- The need for land remains a critical and urgent one as there is no more space in Kakuma to put up more shelters. The camp is hosting 55,000 refugees over and above its design capacity and as such service delivery has been overstretched. The over congestion could contribute to friction among refugees and make it difficult for the security organs to properly manage situations as experienced recently. The regular relocations from the reception centre have stalled as a result and with the rains, the need to secure new land to allow decongestion and accommodate new arrivals is very urgent.

## Working in partnership

- UNHCR continues to work closely with the Government, DRA and other partners to ensure support to refugees and asylum seekers is assured. There have been consistent bi-weekly Inter-Agency meetings chaired by UNHCR and co-chaired by DRA to address the emergency response and issues arising since the start of the influx.

## FINANCIAL INFORMATION

---

Total recorded contributions for the emergency operation amount to **US\$ 19.1 million**

UNHCR is grateful for the critical support provided by donors who have contributed to this operation as well as those who have contributed to UNHCR programmes with unearmarked and broadly earmarked funds.

**Contacts:**

Cathy Wachiaya, Public Information Officer, [wachiaya@unhcr.org](mailto:wachiaya@unhcr.org), Tel: +41227397530 Cell +254 728 602469

Girma Gebre-Kristos, Head of Sub-Office, [gebrekr@unhcr.org](mailto:gebrekr@unhcr.org), Tel: +41227397530, Cell +257 728 602464

**Links:**

Regional portal-<http://data.unhcr.org/SouthSudan/regional.php> Twitter: @UNHCR\_Kenya Facebook: UNHCR Kenya