

New Arrival Registration Trends 2015

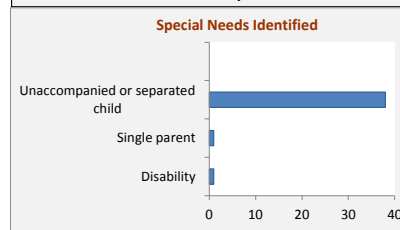
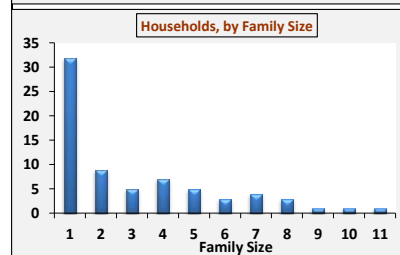
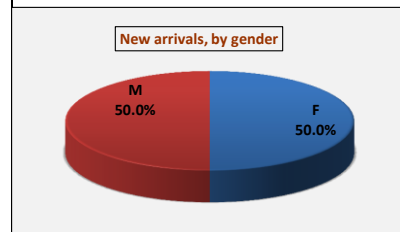
4-Oct-15

An analysis based on actual persons registered in the UNHCR refugee database (proGRES)

[illegible]

Weekly New Registration Population Composition
27th Sep - 03th Oct 2015

* As of 4th October 2015, the overall registered population in Kakuma Refugee Camp stood at **182,254**.



Country of Origin / Gender

Nationality	F	M	Total	%
Burundian	5	2	7	3%
Congolese (DRC)	16	12	28	11%
Ethiopian	4	4	8	2%
Rwandan	1	1	2	0%
Somali	4	2	6	2%
South Sudanese	82	92	174	71%
Sudanese	3	13	16	7%
Ugandan	6	6	12	2%
Yemeni	2	2	4	1%
Total	122	122	244	100%
%	50.0%	50.0%		

New Born Babies

Nationality	F	M	Total
Congolese (DRC)	1	2	3
Ethiopian	2	2	4
Somali	2	6	8
South Sudanese	9	7	16
Sudanese	1	1	2
Total	13	17	30
Av. Family Size	3.4		

Age Cohort

Age Cohort	Total
0 - 4 years	59
12 - 17 years	47
18 - 59 years	72
5 - 11 years	62
60+ years	4
Total	244

Family Size

Family Size	HHs	%
1	32	45.07%
2	9	12.68%
3	5	7.04%
4	7	9.86%
5	5	7.04%
6	3	4.23%
7	4	5.63%
8	3	4.23%
9	1	1.41%
10	1	1.41%
11	1	1.41%
Total	71	100%

NOTES:

A total of **8,662** new arrivals have been registered since the start of 2015; with 651 arriving from Burundi, 1 from Central African Republic, 687 from Democratic Republic of Congo (DRC), 146 from Ethiopia, 20 from Rwanda, 275 from Somalia, 5852 from South Sudan, 918 from Sudan, 108 from Uganda and 4 from Yemen.

The total new born babies so far registered in 2015 is **3,010** including 66 registered during the reporting period.

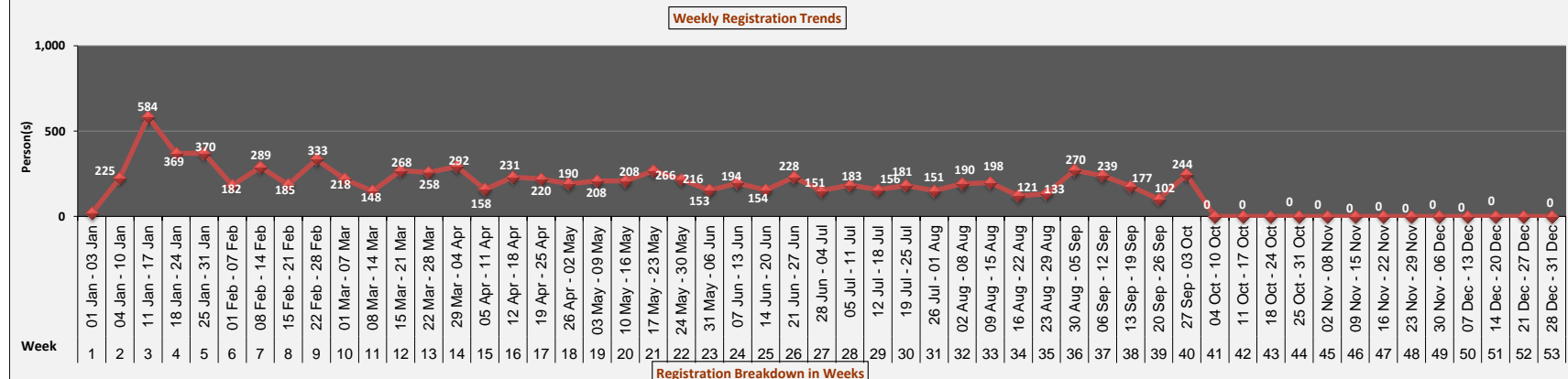
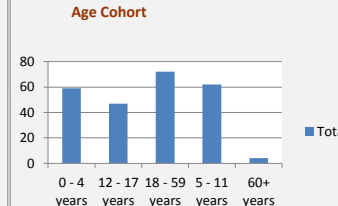
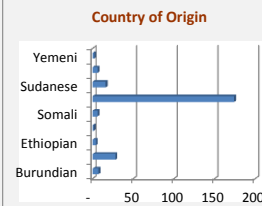
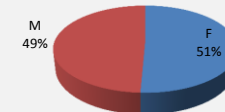
244 individuals were registered during the fortieth week of 2015 [27th Sep - 3th Oct 2015]; 7 from Burundi, 28 from Democratic Republic of Congo (DRC), 4 from Ethiopia, 1 from Rwanda, 6 from Somalia, 174 from South Sudan, 16 from Sudan and 2 from Yemen.

The average family size registered during the reporting period stood at **3.1** individuals. Family size 1 households represented **57.58%** of all newly registered households.

HH Heads

F	M	Total
36	35	71

House Hold Heads by Gender



NB: This report reflects registration trends. In addition to new arrivals reported here, the overall population in Kakuma also increases through new births, in-situ registration (of persons who arrived in a previous period but reported for registration later), family reunification, and various other data adjustments. Analysis and projections are based on actual persons registered in the UNHCR registration database (proGres)