

## Dollo Ado Population Statistical Report

As of 20 Dec 2011

Figure 1.1 - Total Refugee Population in Dollo Ado

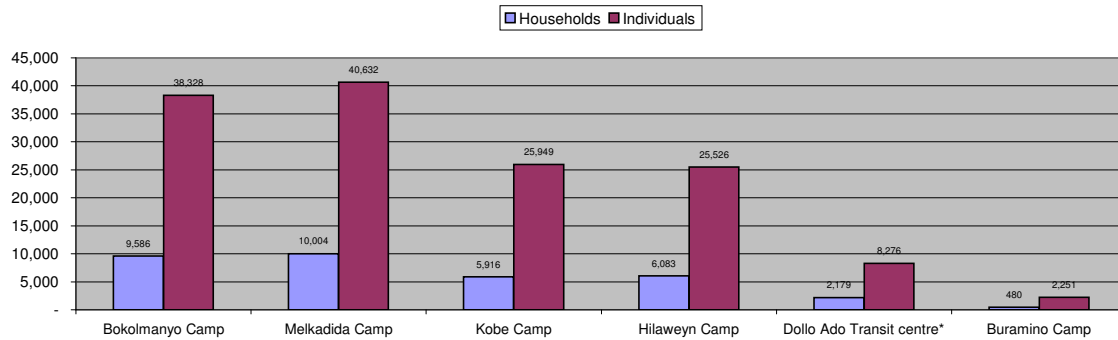
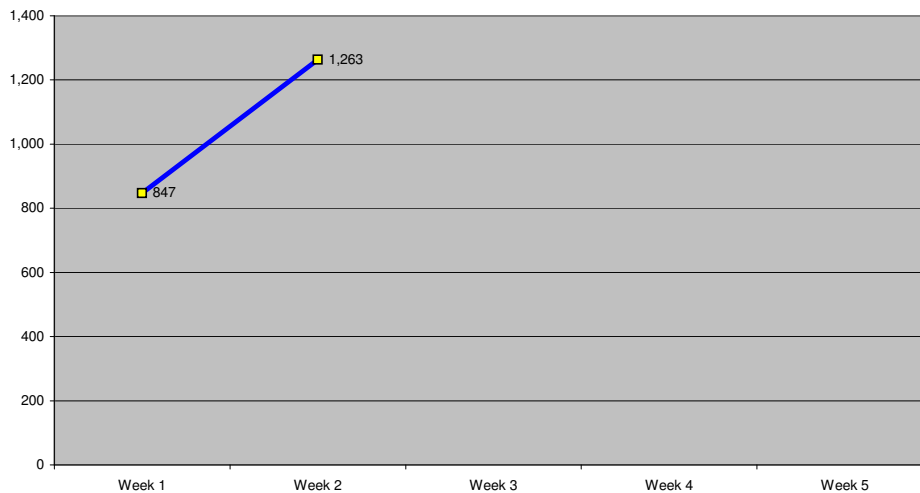


Table 1.1 - Total Refugee Population in Dollo Ado

Site/Camp	Current Total		As of 31 Dec 2010		Arrivals in 2011	
	Households	Individuals	Households	Individuals	Households	Individuals
Bokolmany Camp	9,586	38,328	3,988	14,988	5,598	23,340
Melkadida Camp	10,004	40,632	6,452	25,491	3,552	15,141
Kobe Camp	5,916	25,949	n/a	n/a	5,916	25,949
Hilaweyn Camp	6,083	25,526	n/a	n/a	6,083	25,526
Buramino Camp	480	2,251	n/a	n/a	480	2,251
<b>Camp Sub-Total</b>	<b>32,069</b>	<b>132,686</b>	<b>10,440</b>	<b>40,479</b>	<b>21,149</b>	<b>89,956</b>
Dollo Ado Transit centre*	2,179	8,276	n/a	n/a	2,179	8,276
<b>Temporary Locations Sub-Total</b>	<b>2,179</b>	<b>8,276</b>	<b>n/a</b>	<b>n/a</b>	<b>2,179</b>	<b>8,276</b>
<b>GRAND TOTAL ALL LOCATIONS</b>	<b>34,248</b>	<b>140,962</b>	<b>10,440</b>	<b>40,479</b>	<b>23,328</b>	<b>98,232</b>

\* Individuals currently in the Transit Centre. All new arrivals are registered at the Transit Centre and are subsequently relocated to the camps.

Figure 1.2 - New Arrivals at Reception Centre During Current Month (Weekly)



**Table 1.2 - Daily New Arrivals and Pre-registration by ARRA at the Reception Centre**

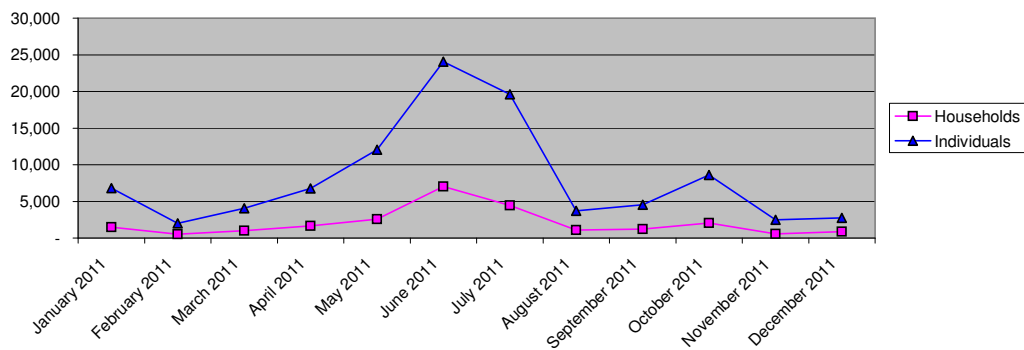
Date	Newly Arrived Individuals	Pre-registered by ARRA *
Thu 01 Dec 11	140	131
Fri 02 Dec 11	152	143
Sat 03 Dec 11		**
Sun 04 Dec 11		**
Mon 05 Dec 11	151	136
Tue 06 Dec 11	339	336
Wed 07 Dec 11	65	65
Thu 08 Dec 11	70	70
Fri 09 Dec 11	204	192
Sat 10 Dec 11		**
Sun 11 Dec 11		**
Mon 12 Dec 11	543	539
Tue 13 Dec 11	251	240
Wed 14 Dec 11	195	189
Thu 15 Dec 11	62	58
Fri 16 Dec 11	106	99
Sat 17 Dec 11	90	90
Sun 18 Dec 11	0	**
Mon 19 Dec 11	298	291
Tue 20 Dec 11	180	167
Wed 21 Dec 11		
Thu 22 Dec 11		
Fri 23 Dec 11		
Sat 24 Dec 11		
Sun 25 Dec 11		
Mon 26 Dec 11		
Tue 27 Dec 11		
Wed 28 Dec 11		
Thu 29 Dec 11		
Fri 30 Dec 11		
Sat 31 Dec 11		
<b>TOTAL THIS MONTH</b>	<b>2,846</b>	<b>2,746</b>

\* Pre-registration by ARRA is not necessarily done on the day of Arrival

\*\* Represent days when ARRA was not receiving Asylum seekers.

The number of those received during these days is include in the figure of next receiving day.

**Figure 1.3 - Pre-Registration Trends in 2011 (Reception Centre/ ARRA)**



Note: these are registration volumes by month, not cumulative figures.

**Table 1.3 - Pre-Registration Trends in 2011 (Reception Centre/ ARRA)**

Month	Households	Individuals
January 2011	1,502	6,792
February 2011	527	2,016
March 2011	1,019	4,072
April 2011	1,650	6,749
May 2011	2,587	12,045
June 2011	7,030	24,042
July 2011	4,463	19,610
August 2011	1,072	3,691
September 2011	1,215	4,563
October 2011	2,036	8,584
November 2011	553	2,485
December 2011	885	2,746
<b>Total</b>	<b>24,539</b>	<b>97,395</b>

**Table 1.4 - Registration & Relocation Trends in Transit Centre up to date**

Stage of Registration & Relocation	Individuals
Total individuals fully registered so far this month	2,824
Total individuals relocated to camps so far this month	2,351
Total individuals fully processed (have ration card), but not yet relocated	8,085

## Camp population by Age and Sex breakdown

As of 20 Dec 2011

Table 2.1 - ALL CAMPS Demographic Breakdown\*

Age Group	Sex				Total	
	Male	( % )	Female	( % )	Total	( % )
0 - 4	16,936	12.8%	16,523	12.5%	33,459	25.2%
5 - 11	21,284	16.0%	20,331	15.3%	41,615	31.4%
12 - 17	7,862	5.9%	7,147	5.4%	15,009	11.3%
18 - 59	14,255	10.7%	25,288	19.1%	39,543	29.8%
60 and above	1,548	1.2%	1,512	1.1%	3,060	2.3%
<b>Total ALL CAMPS</b>	<b>61,885</b>	<b>46.6%</b>	<b>70,801</b>	<b>53.4%</b>	<b>132,686</b>	<b>100.0%</b>

\* These total figures apply only to camps, not to the Transit Centre or Reception Centre

Figure 2.1 - ALL CAMPS Demographic Breakdown\*

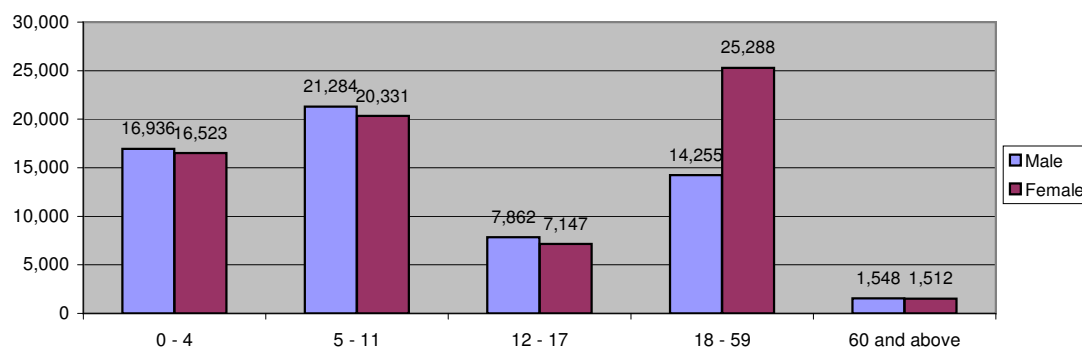
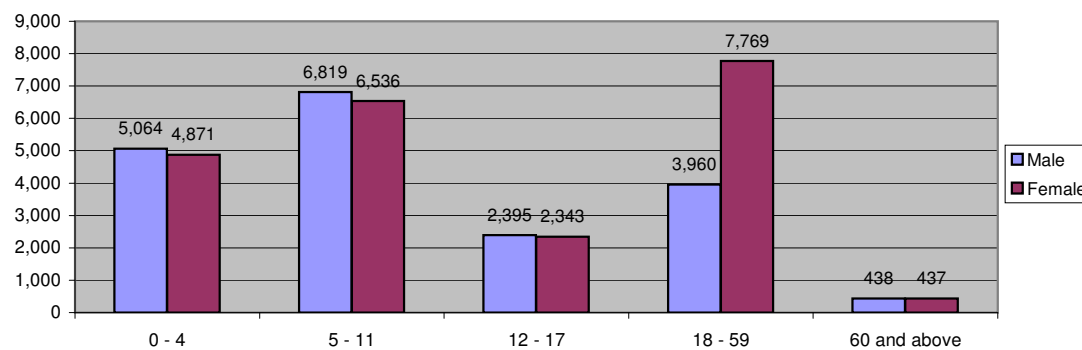


Table 2.2 - Melkadida Camp Demographic Breakdown

Age Group	Sex				Total	
	Male	( % )	Female	( % )	Total	( % )
0 - 4	5,064	12.5%	4,871	12.0%	9,935	24.5%
5 - 11	6,819	16.8%	6,536	16.1%	13,355	32.9%
12 - 17	2,395	5.9%	2,343	5.8%	4,738	11.7%
18 - 59	3,960	9.7%	7,769	19.1%	11,729	28.9%
60 and above	438	1.1%	437	1.1%	875	2.2%
<b>Total Malkadida</b>	<b>18,676</b>	<b>46.0%</b>	<b>21,956</b>	<b>54.0%</b>	<b>40,632</b>	<b>100.0%</b>

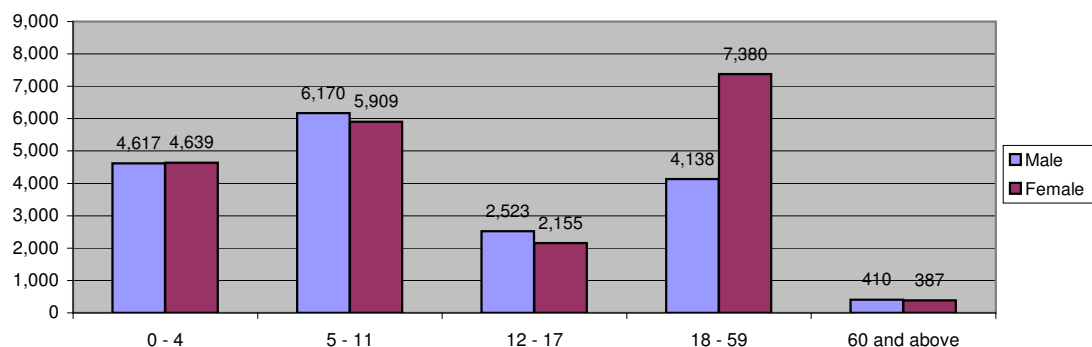
Figure 2.2 - Melkadida Camp Demographic Breakdown\*



**Table 2.3 - Bokolmanyoo Camp Demographic Breakdown**

Age Group	Sex				Total	
	Male	( % )	Female	( % )	Total	( % )
0 - 4	4,617	12.0%	4,639	12.1%	9,256	24.1%
5 - 11	6,170	16.1%	5,909	15.4%	12,079	31.5%
12 - 17	2,523	6.6%	2,155	5.6%	4,678	12.2%
18 - 59	4,138	10.8%	7,380	19.3%	11,518	30.1%
60 and above	410	1.1%	387	1.0%	797	2.1%
<b>Total Bokolmanyoo</b>	<b>17,858</b>	<b>46.6%</b>	<b>20,470</b>	<b>53.4%</b>	<b>38,328</b>	<b>100.0%</b>

**Figure 2.3 - Bokolmanyoo Camp Demographic Breakdown\***



**Table 2.4 - Kobe Camp Demographic Breakdown**

Age Group	Sex				Total	
	Male	( % )	Female	( % )	Total	( % )
0 - 4	3,462	13.3%	3,321	12.8%	6,783	26.1%
5 - 11	4,057	15.6%	3,703	14.3%	7,760	29.9%
12 - 17	1,420	5.5%	1,198	4.6%	2,618	10.1%
18 - 59	3,159	12.2%	4,852	18.7%	8,011	30.9%
60 and above	395	1.5%	382	1.5%	777	3.0%
<b>Total Kobe</b>	<b>12,493</b>	<b>48.1%</b>	<b>13,456</b>	<b>51.9%</b>	<b>25,949</b>	<b>100.0%</b>

**Figure 2.4 - Kobe Camp Demographic Breakdown\***

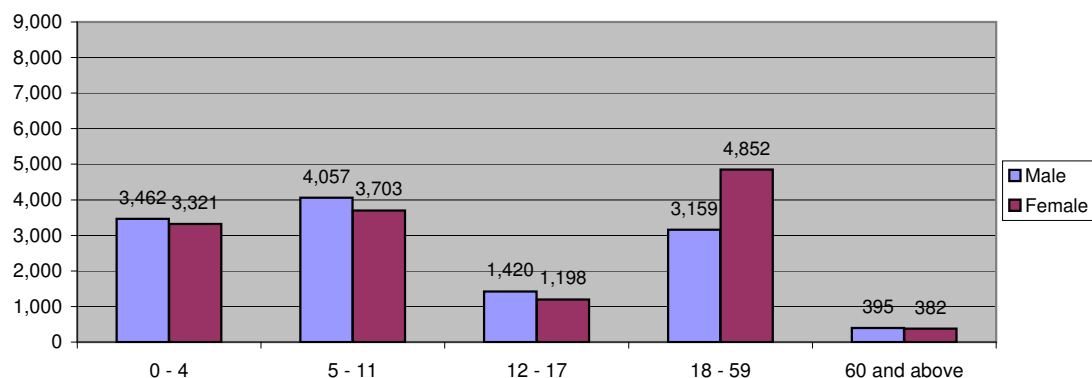


Table 2.5 - Hilaweyn Camp Demographic Breakdown

Age Group	Sex				Total	
	Male	( % )	Female	( % )	Total	( % )
0 - 4	3,472	13.6%	3,379	13.2%	6,851	26.8%
5 - 11	3,881	15.2%	3,838	15.0%	7,719	30.2%
12 - 17	1,416	5.5%	1,310	5.1%	2,726	10.7%
18 - 59	2,799	11.0%	4,861	19.0%	7,660	30.0%
60 and above	287	1.1%	283	1.1%	570	2.2%
<b>Total Hilaweyn</b>	<b>11,855</b>	<b>46.4%</b>	<b>13,671</b>	<b>53.6%</b>	<b>25,526</b>	<b>100.0%</b>

Figure 2.5 - Hilaweyn Camp Demographic Breakdown\*

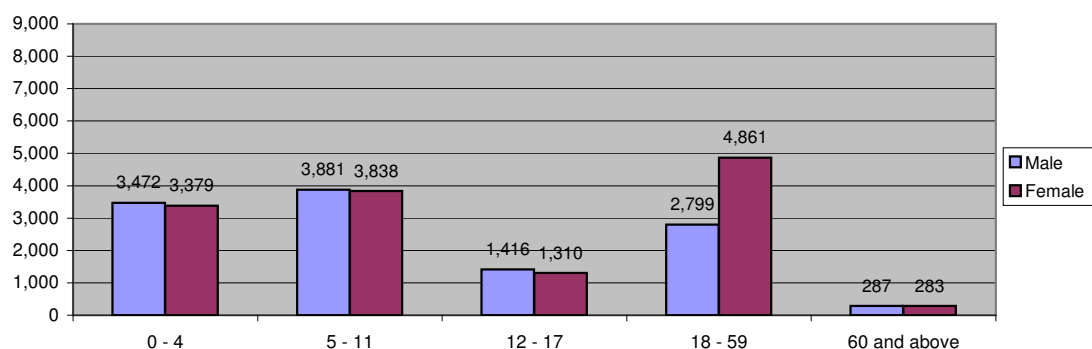


Table 2.6 - Buramino Camp Demographic Breakdown

Age Group	Sex				Total	
	Male	( % )	Female	( % )	Total	( % )
0 - 4	321	14.3%	313	13.9%	634	28.2%
5 - 11	357	15.9%	345	15.3%	702	31.2%
12 - 17	108	4.8%	141	6.3%	249	11.1%
18 - 59	199	8.8%	426	18.9%	625	27.8%
60 and above	18	0.8%	23	1.0%	41	1.8%
<b>Total Buramino</b>	<b>1,003</b>	<b>44.6%</b>	<b>1,248</b>	<b>55.4%</b>	<b>2,251</b>	<b>100.0%</b>

Figure 2.6 - Buramino Camp Demographic Breakdown\*

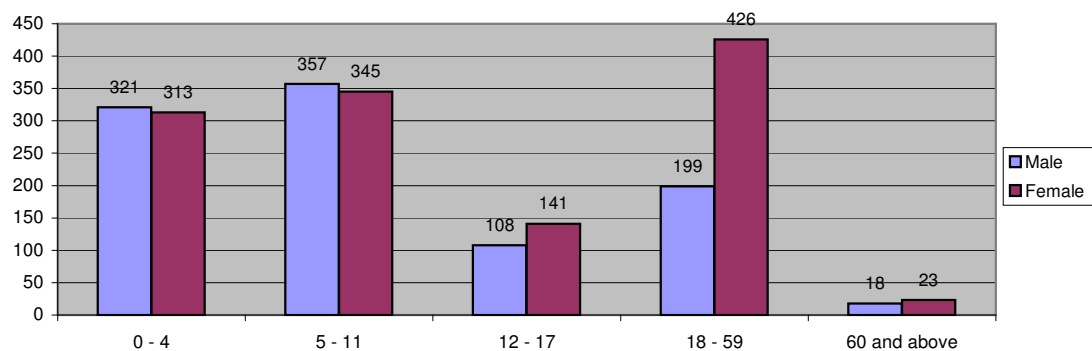


Table 2.7 - Dollo Ado Transit centre Demographic Breakdown

Age Group	Sex				Total	
	Male	( % )	Female	( % )	Total	( % )
0 - 4	1,169	14.1%	1,121	13.5%	2,290	27.7%
5 - 11	1,177	14.2%	1,190	14.4%	2,367	28.6%
12 - 17	407	4.9%	438	5.3%	845	10.2%
18 - 59	1,025	12.4%	1,536	18.6%	2,561	30.9%
60 and above	99	1.2%	114	1.4%	213	2.6%
<b>Total TransitCentre</b>	<b>3,877</b>	<b>46.8%</b>	<b>4,399</b>	<b>53.2%</b>	<b>8,276</b>	<b>100.0%</b>

Figure 2.7 - Dollo Ado Transit centre Demographic Breakdown

