

Dollo Ado Population Statistical Report

As of 27 Jan 2012

Figure 1.1 - Total Refugee Population in Dollo Ado

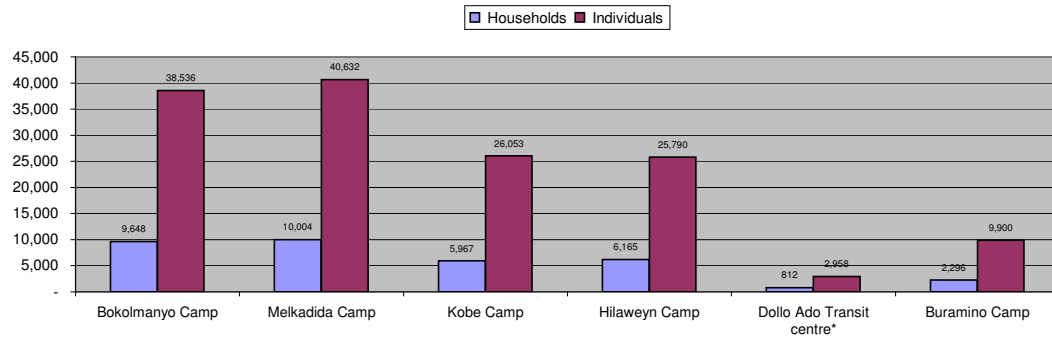


Table 1.1 - Total Refugee Population in Dollo Ado

Site/Camp	As of 31 Dec 2010		As of 31 Dec 2011		Current Total	
	Households	Individuals	Households	Individuals	Households	Individuals
Bokolmanyo Camp	3,988	14,988	9,624	38,501	9,648	38,536
Melkadida Camp	6,452	25,491	10,024	40,696	10,004	40,632
Kobe Camp	n/a	n/a	5,946	26,033	5,967	26,053
Hilaweyn Camp	n/a	n/a	6,119	25,747	6,165	25,790
Buramino Camp	n/a	n/a	911	4,045	2,296	9,900
Camp Sub-Total	10,440	40,479	32,624	135,022	34,080	140,911
Dollo Ado Transit centre*	n/a	n/a	1,902	7,284	812	2,958
Temporary Locations Sub-Total	n/a	n/a	n/a	n/a	812	2,958
GRAND TOTAL ALL LOCATIONS	10,440	40,479	34,526	142,306	34,892	143,869

* Individuals currently in the Transit Centre. All new arrivals are registered at the Transit Centre and are subsequently relocated to the camps.

Figure 1.2 - New Arrivals at Reception Centre During Current Month (Weekly)

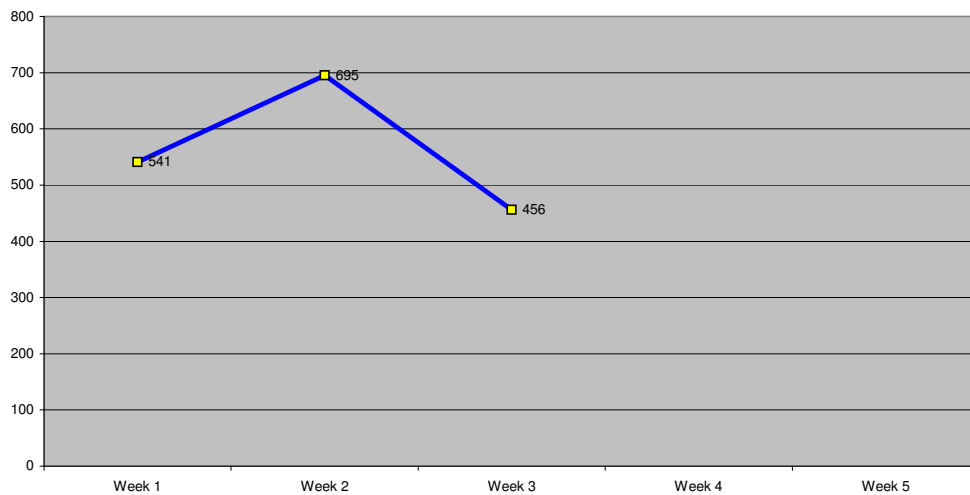


Table 1.2 - Daily New Arrivals and Pre-registration by ARRA at the Reception Centre

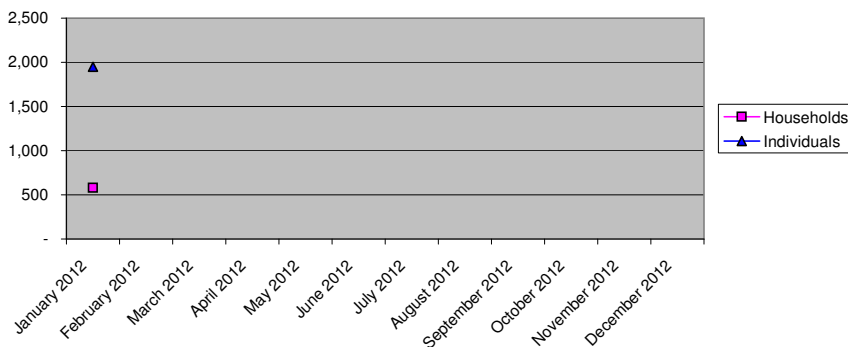
Date	Newly Arrived Individuals	Pre-registered by ARRA *
Sun 01 Jan 12		**
Mon 02 Jan 12	223	209
Tue 03 Jan 12	145	135
Wed 04 Jan 12	92	92
Thu 05 Jan 12	41	41
Fri 06 Jan 12	40	33
Sat 07 Jan 12		**
Sun 08 Jan 12		**
Mon 09 Jan 12	243	228
Tue 10 Jan 12	132	126
Wed 11 Jan 12	146	140
Thu 12 Jan 12	21	21
Fri 13 Jan 12	140	140
Sat 14 Jan 12	13	13
Sun 15 Jan 12		**
Mon 16 Jan 12	96	87
Tue 17 Jan 12	65	65
Wed 18 Jan 12	19	19
Thu 19 Jan 12	244	244
Fri 20 Jan 12		**
Sat 21 Jan 12	32	32
Sun 22 Jan 12		**
Mon 23 Jan 12	85	85
Tue 24 Jan 12	64	64
Wed 25 Jan 12	59	59
Thu 26 Jan 12	80	80
Fri 27 Jan 12	35	35
Sat 28 Jan 12		
Sun 29 Jan 12		
Mon 30 Jan 12		
Tue 31 Jan 12		
TOTAL THIS MONTH	2,015	1,948

* Pre-registration by ARRA is not necessarily done on the day of Arrival

** Represent days when ARRA was not receiving Asylum seekers.

The number of those received during these days is include in the figure of next receiving day.

Figure 1.3 - Pre-Registration Trends in 2012 (Reception Centre/ ARRA)



Note: these are registration volumes by month, not cumulative figures.

Table 1.3 - Pre-Registration Trends in 2012 (Reception Centre/ ARRA)

Month	Households	Individuals
January 2012	580	1,948
February 2012		
March 2012		
April 2012		
May 2012		
June 2012		
July 2012		
August 2012		
September 2012		
October 2012		
November 2012		
December 2012		
Total	580	1,948

Table 1.4 - Registration & Relocation Trends in Transit Centre up to date

Stage of Registration & Relocation	Individuals
Total individuals fully registered so far this month	1,965
Total individuals relocated to camps so far this month	5,889
Total individuals fully processed (have ration card), but not yet relocated	2,796

Camp population by Age and Sex breakdown

As of 27 Jan 2012

Table 2.1 - ALL CAMPS Demographic Breakdown*

Age Group	Sex				Total	
	Male	(%)	Female	(%)	Total	(%)
0 - 4	16,305	11.6%	15,905	11.3%	32,210	22.9%
5 - 11	23,474	16.7%	22,531	16.0%	46,005	32.6%
12 - 17	8,760	6.2%	7,969	5.7%	16,729	11.9%
18 - 59	15,584	11.1%	27,083	19.2%	42,667	30.3%
60 and above	1,673	1.2%	1,627	1.2%	3,300	2.3%
Total ALL CAMPS	65,796	46.7%	75,115	53.3%	140,911	100.0%

* These total figures apply only to camps, not to the Transit Centre or Reception Centre

Figure 2.1 - ALL CAMPS Demographic Breakdown*

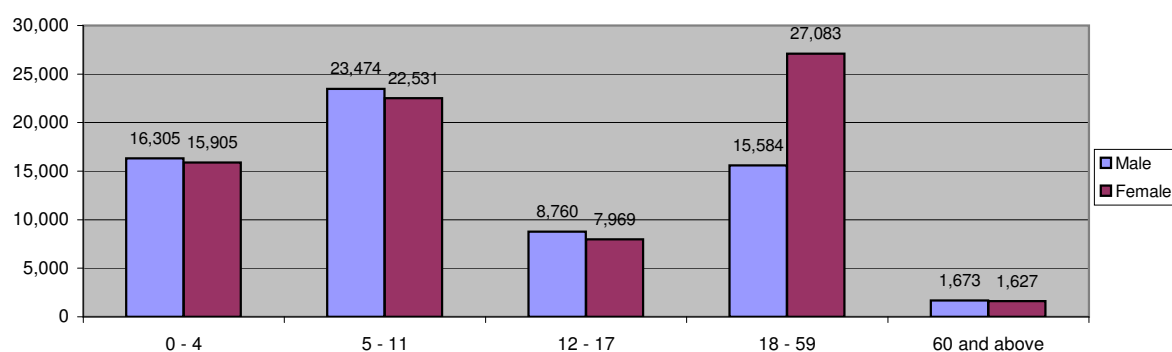


Table 2.2 - Melkadida Camp Demographic Breakdown

911

Age Group	Sex				Total	
	Male	(%)	Female	(%)	Total	(%)
0 - 4	5,064	12.5%	4,871	12.0%	9,935	24.5%
5 - 11	6,819	16.8%	6,536	16.1%	13,355	32.9%
12 - 17	2,395	5.9%	2,343	5.8%	4,738	11.7%
18 - 59	3,960	9.7%	7,769	19.1%	11,729	28.9%
60 and above	438	1.1%	437	1.1%	875	2.2%
Total Malkadida	18,676	46.0%	21,956	54.0%	40,632	100.0%

Figure 2.2 - Melkadida Camp Demographic Breakdown*

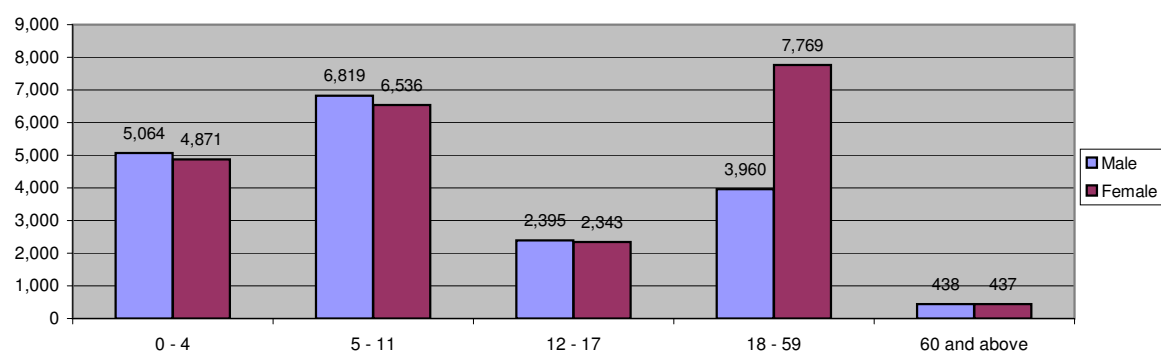


Table 2.3 - Bokolmanyo Camp Demographic Breakdown

Age Group	Sex				Total	
	Male	(%)	Female	(%)	Total	(%)
0 - 4	3,549	9.2%	3,608	9.4%	7,157	18.6%
5 - 11	6,774	17.6%	6,526	16.9%	13,300	34.5%
12 - 17	2,842	7.4%	2,399	6.2%	5,241	13.6%
18 - 59	4,385	11.4%	7,628	19.8%	12,013	31.2%
60 and above	426	1.1%	399	1.0%	825	2.1%
Total Bokolmanyo	17,976	46.6%	20,560	53.4%	38,536	100.0%

Figure 2.3 - Bokolmanyo Camp Demographic Breakdown*

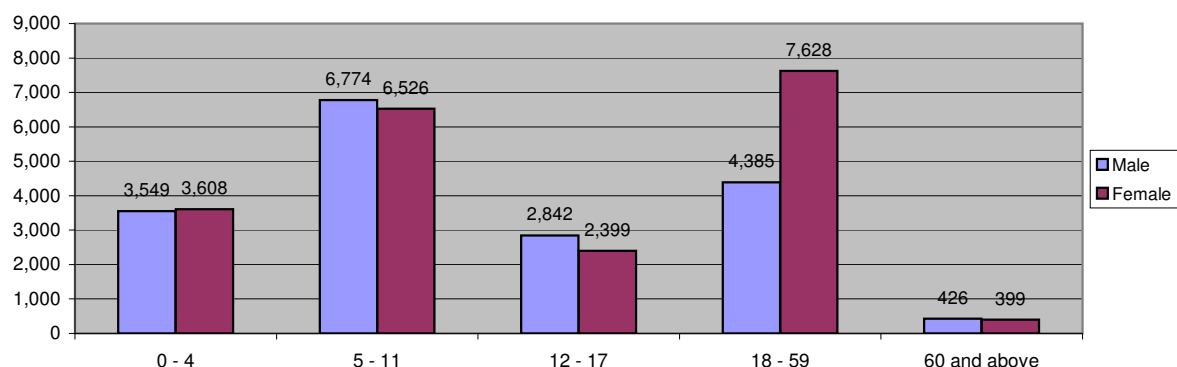


Table 2.4 - Kobe Camp Demographic Breakdown

Age Group	Sex				Total	
	Male	(%)	Female	(%)	Total	(%)
0 - 4	2,725	10.5%	2,618	10.0%	5,343	20.5%
5 - 11	4,506	17.3%	4,150	15.9%	8,656	33.2%
12 - 17	1,612	6.2%	1,366	5.2%	2,978	11.4%
18 - 59	3,324	12.8%	4,954	19.0%	8,278	31.8%
60 and above	414	1.6%	384	1.5%	798	3.1%
Total Kobe	12,581	48.3%	13,472	51.7%	26,053	100.0%

Figure 2.4 - Kobe Camp Demographic Breakdown*

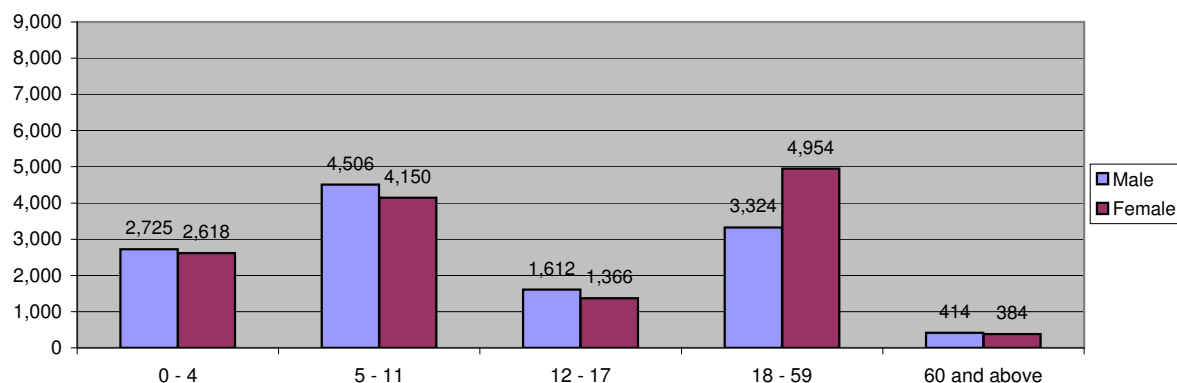


Table 2.5 - Hilaweyn Camp Demographic Breakdown

Age Group	Sex				Total	
	Male	(%)	Female	(%)	Total	(%)
0 - 4	3,549	13.8%	3,459	13.4%	7,008	27.2%
5 - 11	3,884	15.1%	3,837	14.9%	7,721	29.9%
12 - 17	1,433	5.6%	1,317	5.1%	2,750	10.7%
18 - 59	2,873	11.1%	4,863	18.9%	7,736	30.0%
60 and above	296	1.1%	279	1.1%	575	2.2%
Total Hilaweyn	12,035	46.7%	13,755	53.3%	25,790	100.0%

Figure 2.5 - Hilaweyn Camp Demographic Breakdown*

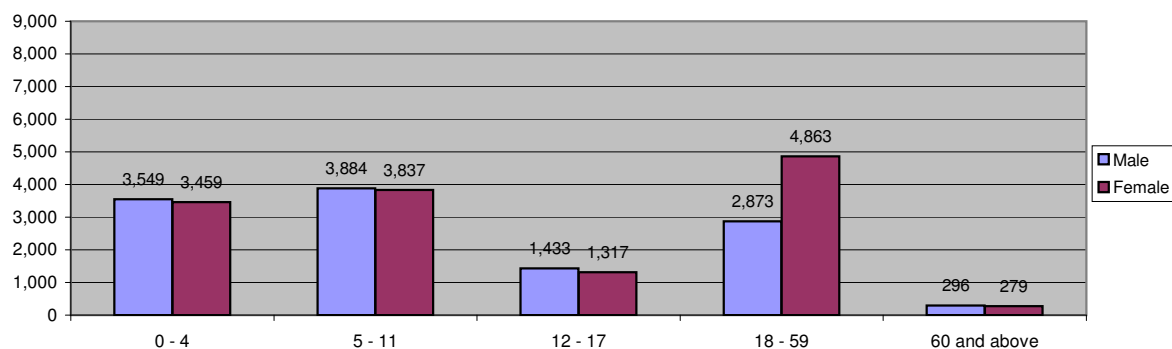


Table 2.6 - Buramino Camp Demographic Breakdown

Age Group	Sex				Total	
	Male	(%)	Female	(%)	Total	(%)
0 - 4	1,418	14.3%	1,349	13.6%	2,767	27.9%
5 - 11	1,491	15.1%	1,482	15.0%	2,973	30.0%
12 - 17	478	4.8%	544	5.5%	1,022	10.3%
18 - 59	1,042	10.5%	1,869	18.9%	2,911	29.4%
60 and above	99	1.0%	128	1.3%	227	2.3%
Total Buramino	4,528	45.7%	5,372	54.3%	9,900	100.0%

Figure 2.6 - Buramino Camp Demographic Breakdown*

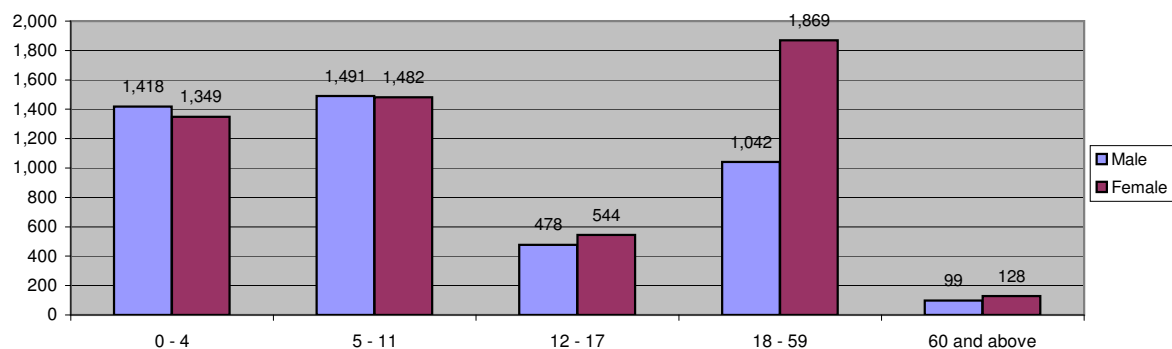


Table 2.7 - Dollo Ado Transit Centre Demographic Breakdown

Age Group	Sex				Total	
	Male	(%)	Female	(%)	Total	(%)
0 - 4	422	14.3%	380	12.8%	802	27.1%
5 - 11	443	15.0%	428	14.5%	871	29.4%
12 - 17	167	5.6%	154	5.2%	321	10.9%
18 - 59	345	11.7%	538	18.2%	883	29.9%
60 and above	36	1.2%	45	1.5%	81	2.7%
Total TransitCentre	1,413	47.8%	1,545	52.2%	2,958	100.0%

Figure 2.7 - Dollo Ado Transit Centre Demographic Breakdown

