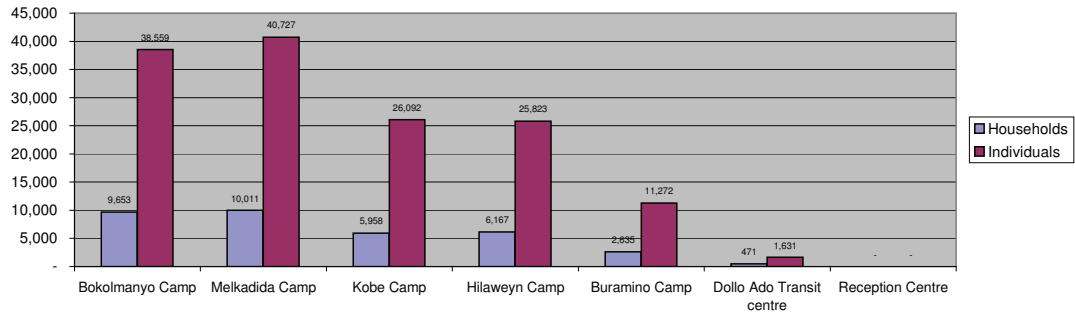


## Dollo Ado Population end of Month Statistical Report

*As of 31 Jan 2012*

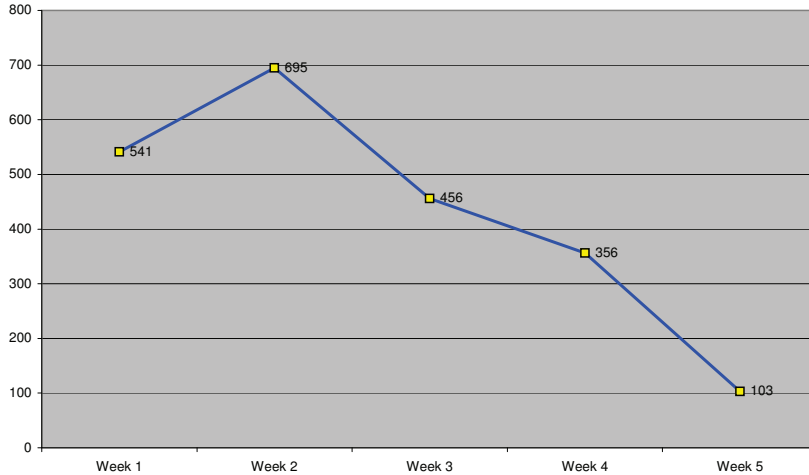
**Figure 1.1 - Total Refugee Population in Dollo Ado**



**Table 1.1 - Total Refugee Population in Dollo Ado**

Site/Camp	Current Total		As of 31 Dec 2010		As of 31 Dec 2011	
	Households	Individuals	Households	Individuals	Households	Individuals
Bokolmanyoo Camp	9,653	38,559	3,988	14,988	9,624	38,501
Melkadida Camp	10,011	40,727	6,452	25,491	10,024	40,696
Kobe Camp	5,958	26,092	n/a	n/a	5,946	26,033
Hilaweyn Camp	6,167	25,823	n/a	n/a	6,119	25,747
Buramino Camp	2,635	11,272	n/a	n/a	911	4,045
<b>Camp Sub-Total</b>	<b>34,424</b>	<b>142,473</b>	<b>10,440</b>	<b>40,479</b>	<b>32,624</b>	<b>135,022</b>
Dollo Ado Transit centre	471	1,631	n/a	n/a	471	1,631
Reception Centre	n/a	n/a	n/a	n/a	n/a	n/a
<b>Temporary Locations Sub-Total</b>	<b>471</b>	<b>1,631</b>	<b>n/a</b>	<b>n/a</b>	<b>471</b>	<b>1,631</b>
<b>GRAND TOTAL ALL LOCATIONS</b>	<b>34,895</b>	<b>144,104</b>	<b>10,440</b>	<b>40,479</b>	<b>33,095</b>	<b>136,653</b>

**Figure 1.2 - New Arrivals at Reception Centre by Week during the Current Month**



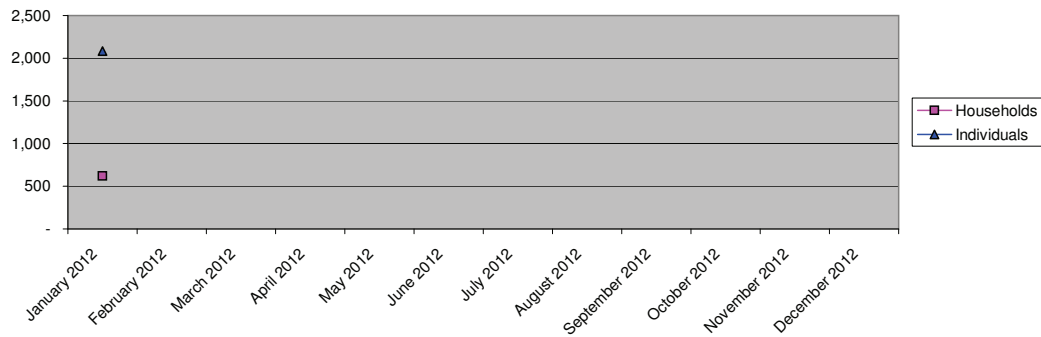
**Table 1.2 - Daily New Arrivals and Pre-registration by ARRA at the Reception Centre**

Date	Newly Arrived Individuals	Pre-registered by ARRA *
1-Jan-2012		**
2-Jan-2012	223	209
3-Jan-2012	145	135
4-Jan-2012	92	92
5-Jan-2012	41	41
6-Jan-2012	40	33
7-Jan-2012		**
8-Jan-2012		**
9-Jan-2012	243	228
10-Jan-2012	132	126
11-Jan-2012	146	140
12-Jan-2012	21	21
13-Jan-2012	140	140
14-Jan-2012	13	13
15-Jan-2012		**
16-Jan-2012	96	87
17-Jan-2012	65	65
18-Jan-2012	19	19
19-Jan-2012	244	244
20-Jan-2012		**
21-Jan-2012	32	32
22-Jan-2012		**
23-Jan-2012	85	85
24-Jan-2012	64	64
25-Jan-2012	59	59
26-Jan-2012	80	80
27-Jan-2012	35	35
28-Jan-2012	33	33
29-Jan-2012		**
30-Jan-2012	88	88
31-Jan-2012	15	15
<b>TOTAL THIS MONTH</b>	<b>2,151</b>	<b>2,084</b>

\* Data Provided by ARRA. Blanks indicate days when ARRA was not receiving refugees.

The number of those received during these days is included in the figure of next receiving day.

**Figure 1.3 - Pre-Registration Trends in 2012 (Reception Centre/ ARRA) \***



\* These are registration volumes by month, not cumulative figures.

**Table 1.3 - Pre-Registration Trends in 2012 (Reception Centre/ ARRA)**

Month	Households	Individuals
January 2012	621	2,084
February 2012		
March 2012		
April 2012		
May 2012		
June 2012		
July 2012		
August 2012		
September 2012		
October 2012		
November 2012		
December 2012		
<b>Total</b>	<b>621</b>	<b>2,084</b>

**Table 1.4 - Registration & Relocation Trends in Transit Centre since 31 Dec 2011 (up to date)**

Stage of Registration & Relocation	Individuals
Total individuals fully registered so far this month	2,103
Total individuals relocated to camp so far this month	7,297
Total Individuals fully processed (hold ration card), but not yet relocated	1,460

## Camp population by Age and Sex breakdown

As of 31 Jan 2012

Table 2.1 - ALL CAMPS Demographic Breakdown\*

Age Group	Sex				Total	
	Male	( % )	Female	( % )	Total	( % )
0 - 4	15,538	10.8%	15,066	10.5%	30,604	21.2%
5 - 11	24,500	17.0%	23,626	16.4%	48,126	33.4%
12 - 17	9,445	6.6%	8,518	5.9%	17,963	12.5%
18 - 59	16,122	11.2%	27,868	19.3%	43,990	30.5%
60 and above	1,732	1.2%	1,689	1.2%	3,421	2.4%
<b>Total ALL CAMPS</b>	<b>67,337</b>	<b>46.7%</b>	<b>76,767</b>	<b>53.3%</b>	<b>144,104</b>	<b>100.0%</b>

\* These total figures apply only to camps, not to the Transit Centre and Reception Centre

Figure 2.1 - ALL CAMPS Demographic Breakdown\*

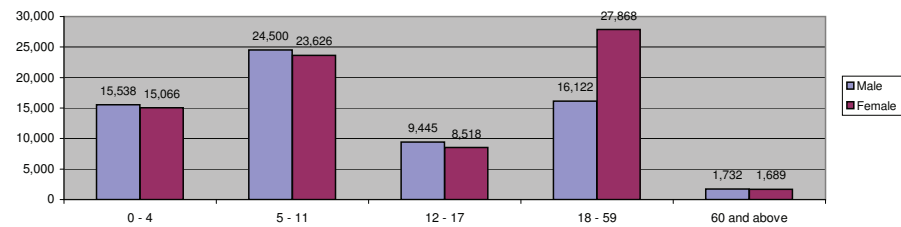


Table 2.2 - Melkadida Camp Demographic Breakdown

Age Group	Sex				Total	
	Male	( % )	Female	( % )	Total	( % )
0 - 4	3,845	9.4%	3,628	8.9%	7,473	18.3%
5 - 11	7,365	18.1%	7,187	17.6%	14,552	35.7%
12 - 17	2,905	7.1%	2,735	6.7%	5,640	13.8%
18 - 59	4,151	10.2%	7,999	19.6%	12,150	29.8%
60 and above	461	1.1%	451	1.1%	912	2.2%
<b>Melkadida Total</b>	<b>18,727</b>	<b>46.0%</b>	<b>22,000</b>	<b>54.0%</b>	<b>40,727</b>	<b>100.0%</b>

Figure 2.2 - Melkadida Camp Demographic Breakdown

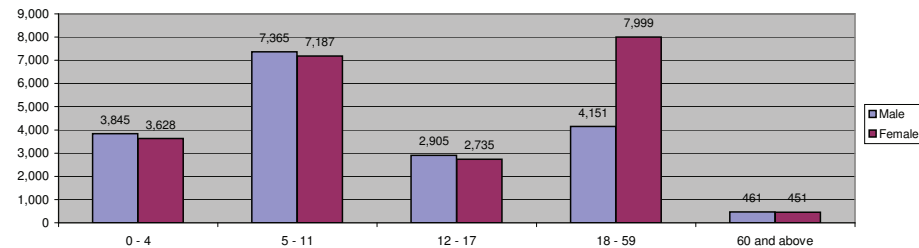


Table 2.3 - Bokolmany Camp Demographic Breakdown

Age Group	Sex				Total	
	Male	( % )	Female	( % )	Total	( % )
0 - 4	3,548	9.2%	3,617	9.4%	7,165	18.6%
5 - 11	6,778	17.6%	6,530	16.9%	13,308	34.5%
12 - 17	2,844	7.4%	2,399	6.2%	5,243	13.6%
18 - 59	4,387	11.4%	7,629	19.8%	12,016	31.2%
60 and above	427	1.1%	400	1.0%	827	2.1%
<b>Bokolmanyol Total</b>	<b>17,984</b>	<b>46.6%</b>	<b>20,575</b>	<b>53.4%</b>	<b>38,559</b>	<b>100.0%</b>

Figure 2.3 - Bokolmany Camp Demographic Breakdown

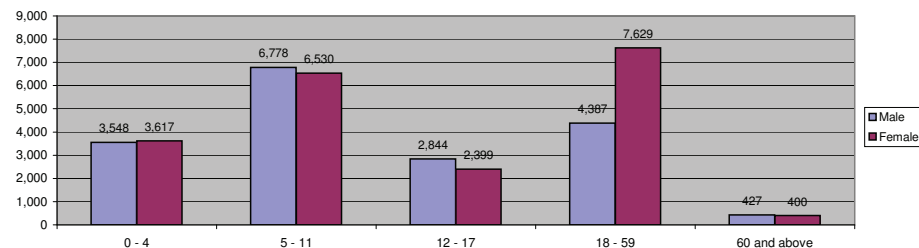


Table 2.4 - Kobe Camp Demographic Breakdown

Age Group	Sex				Total	
	Male	( % )	Female	( % )	Total	( % )
0 - 4	2,747	10.5%	2,634	10.1%	5,381	20.6%
5 - 11	4,506	17.3%	4,147	15.9%	8,653	33.2%
12 - 17	1,614	6.2%	1,365	5.2%	2,979	11.4%
18 - 59	3,326	12.7%	4,957	19.0%	8,283	31.7%
60 and above	413	1.6%	383	1.5%	796	3.1%
<b>Kobe Total</b>	<b>12,606</b>	<b>48.3%</b>	<b>13,486</b>	<b>51.7%</b>	<b>26,092</b>	<b>100.0%</b>

Figure 2.4 - Kobe Camp Demographic Breakdown

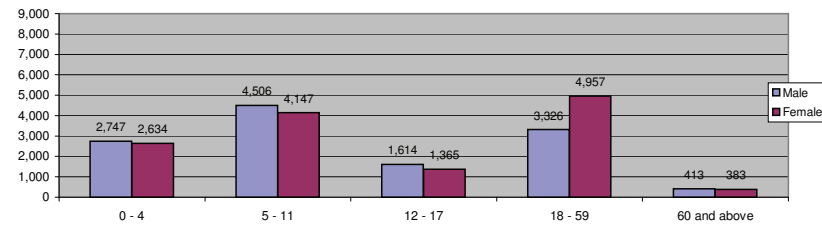


Table 2.5 - Hilaweyn Camp Demographic Breakdown

Age Group	Sex				Total	
	Male	( % )	Female	( % )	Total	( % )
0 - 4	3,549	13.7%	3,455	13.4%	7,004	27.1%
5 - 11	3,893	15.1%	3,847	14.9%	7,740	30.0%
12 - 17	1,435	5.6%	1,323	5.1%	2,758	10.7%
18 - 59	2,877	11.1%	4,864	18.8%	7,741	30.0%
60 and above	299	1.2%	281	1.1%	580	2.2%
<b>Hilaweyn Total</b>	<b>12,053</b>	<b>46.7%</b>	<b>13,770</b>	<b>53.3%</b>	<b>25,823</b>	<b>100.0%</b>

Figure 2.5 - Hilaweyn Camp Demographic Breakdown

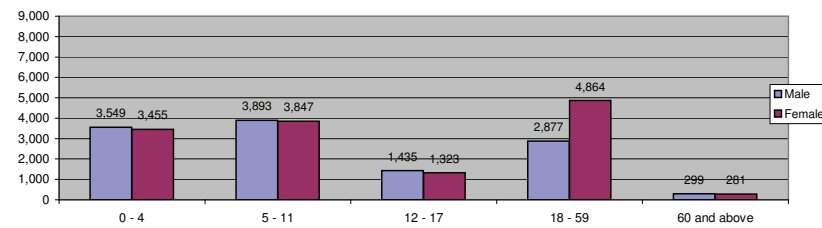


Table 2.6 - Buramino Camp Demographic Breakdown

Age Group	Sex				Total	
	Male	( % )	Female	( % )	Total	( % )
0 - 4	1,621	14.4%	1,521	13.5%	3,142	27.9%
5 - 11	1,714	15.2%	1,683	14.9%	3,397	30.1%
12 - 17	557	4.9%	614	5.4%	1,171	10.4%
18 - 59	1,182	10.5%	2,120	18.8%	3,302	29.3%
60 and above	109	1.0%	151	1.3%	260	2.3%
<b>Buramino Total</b>	<b>5,183</b>	<b>46.0%</b>	<b>6,089</b>	<b>54.0%</b>	<b>11,272</b>	<b>100.0%</b>

Figure 2.6 - Buramino Camp Demographic Breakdown

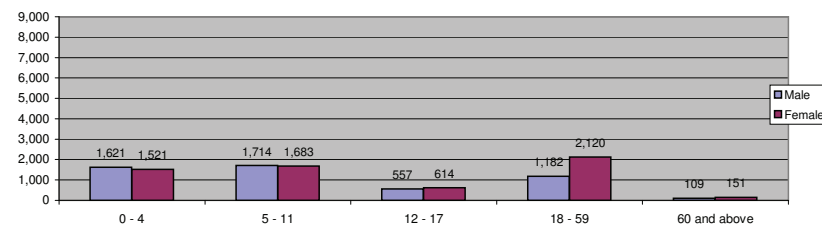


Table 2.7 - Dollo Ado Transit Center Demographic Breakdown

Age Group	Sex				Total	
	Male	( % )	Female	( % )	Total	( % )
0 - 4	228	14.0%	211	12.9%	439	26.9%
5 - 11	244	15.0%	232	14.2%	476	29.2%

12 - 17	90	5.5%	82	5.0%	172	10.5%
18 - 59	199	12.2%	299	18.3%	498	30.5%
60 and above	23	1.4%	23	1.4%	46	2.8%
<b>Transit Centre</b>	<b>784</b>	<b>48.1%</b>	<b>847</b>	<b>51.9%</b>	<b>1,631</b>	<b>100.0%</b>

Figure 2.7 - Dollo Ado Transit Center Demographic Breakdown

