

Dollo Ado Population Statistical Report

As of 26 April 2012

Figure 1.1 - Total Refugee Population in Dollo Ado

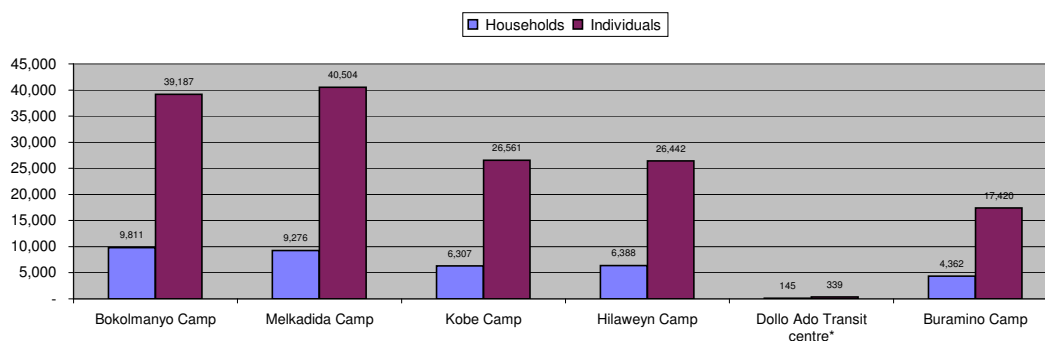


Table 1.1 - Total Refugee Population in Dollo Ado

Site/Camp	As of 31 Dec 2010		As of 31 Dec 2011		Current Total	
	Households	Individuals	Households	Individuals	Households	Individuals
Bokolmanyo Camp	3,988	14,988	9,624	38,501	9,811	39,187
Melkadida Camp	6,452	25,491	10,024	40,696	9,276	40,504
Kobe Camp	n/a	n/a	5,946	26,033	6,307	26,561
Hilaweyn Camp	n/a	n/a	6,119	25,747	6,388	26,442
Buramino Camp	n/a	n/a	911	4,045	4,362	17,420
Camp Sub-Total	10,440	40,479	32,624	135,022	36,144	150,114
Dollo Ado Transit centre*	n/a	n/a	1,902	7,284	145	339
Temporary Locations Sub-Total	n/a	n/a	n/a	n/a	145	339
GRAND TOTAL ALL LOCATIONS	10,440	40,479	34,526	142,306	36,289	150,453

* Individuals currently in the Transit Centre. All new arrivals are registered at the Transit Centre and are subsequently relocated to the camps.

Figure 1.2 - New Arrivals at Reception Centre During Current Month (Weekly)

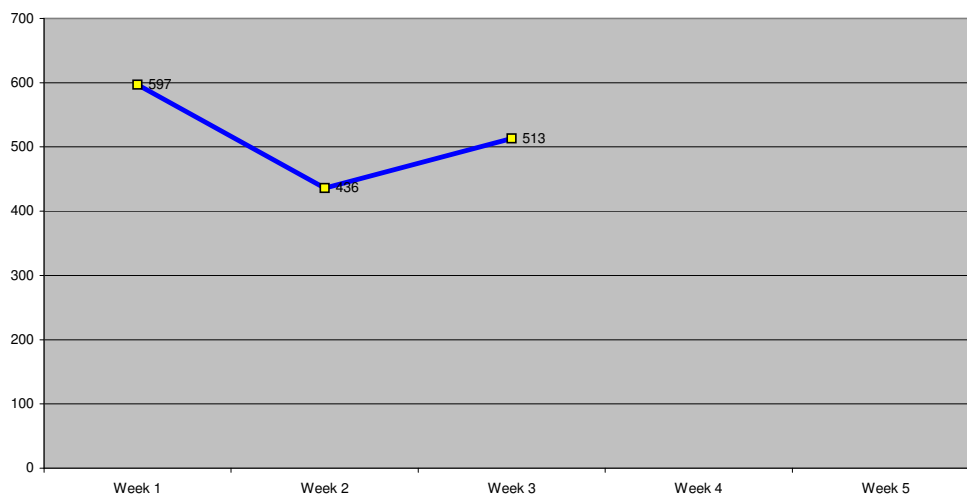


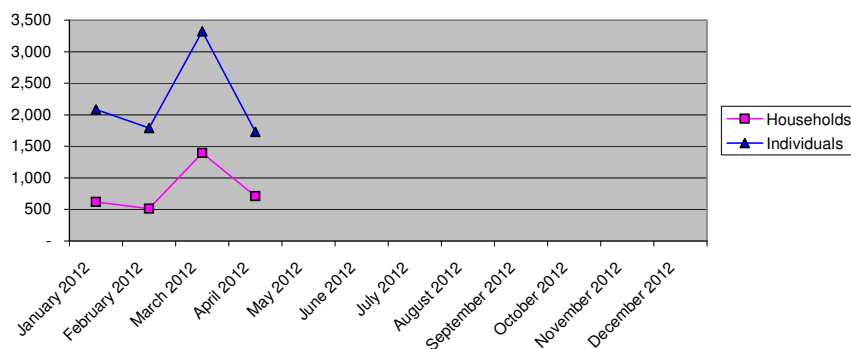
Table 1.2 - Daily New Arrivals and Pre-registration by ARRA at the Reception Centre

Date	Newly Arrived Individuals	Pre-registered by ARRA *
Sun 01 Apr 12		**
Mon 02 Apr 12	146	132
Tue 03 Apr 12	165	154
Wed 04 Apr 12	45	42
Thu 05 Apr 12	37	31
Fri 06 Apr 12	103	95
Sat 07 Apr 12	101	101
Sun 08 Apr 12		**
Mon 09 Apr 12	190	173
Tue 10 Apr 12	86	77
Wed 11 Apr 12	84	75
Thu 12 Apr 12	76	68
Fri 13 Apr 12		**
Sat 14 Apr 12		**
Sun 15 Apr 12		**
Mon 16 Apr 12	159	147
Tue 17 Apr 12	128	121
Wed 18 Apr 12	55	55
Thu 19 Apr 12	48	48
Fri 20 Apr 12	50	50
Sat 21 Apr 12	73	73
Sun 22 Apr 12		**
Mon 23 Apr 12	55	55
Tue 24 Apr 12	102	102
Wed 25 Apr 12	82	82
Thu 26 Apr 12	51	51
Fri 27 Apr 12		
Sat 28 Apr 12		
Sun 29 Apr 12		
Mon 30 Apr 12		
Tue 01 May 12		
TOTAL THIS MONTH	1,836	1,732

* Pre-registration by ARRA is not necessarily done on the day of Arrival

** Represent days when ARRA was not receiving Asylum seekers.

The number of those received during these days is include in the figure of next receiving day.

Figure 1.3 - Pre-Registration Trends in 2012 (Reception Centre/ ARRA)


Note: these are registration volumes by month, not cumulative figures.

Table 1.3 - Pre-Registration Trends in 2012 (Reception Centre/ ARRA)

Month	Households	Individuals
January 2012	621	2,084
February 2012	512	1,789
March 2012	1,395	3,324
April 2012	711	1,732
May 2012		
June 2012		
July 2012		
August 2012		
September 2012		
October 2012		
November 2012		
December 2012		
Total	3,239	8,929

Table 1.4 - Registration & Relocation Trends in Transit Centre up to date

Stage of Registration & Relocation	Individuals
Total individuals fully registered so far this month	1,872
Total individuals relocated to camps so far this month	1,999
Total individuals fully processed (have ration card), but not yet relocated	302

Camp Population by Age and Sex breakdown

As of 26 April 2012

Table 2.1 - ALL CAMPS Demographic Breakdown*

Age Group	Sex				Total	
	Male	(%)	Female	(%)	Total	(%)
0 - 4	15,486	10.3%	15,110	10.1%	30,596	20.4%
5 - 11	26,079	17.4%	25,103	16.7%	51,182	34.1%
12 - 17	10,095	6.7%	8,918	5.9%	19,013	12.7%
18 - 59	17,090	11.4%	28,662	19.1%	45,752	30.5%
60 and above	1,858	1.2%	1,713	1.1%	3,571	2.4%
Total ALL CAMPS	70,608	47.0%	79,506	53.0%	150,114	100.0%

* These total figures apply only to camps, not to the Transit Centre or Reception Centre

Figure 2.1 - ALL CAMPS Demographic Breakdown*

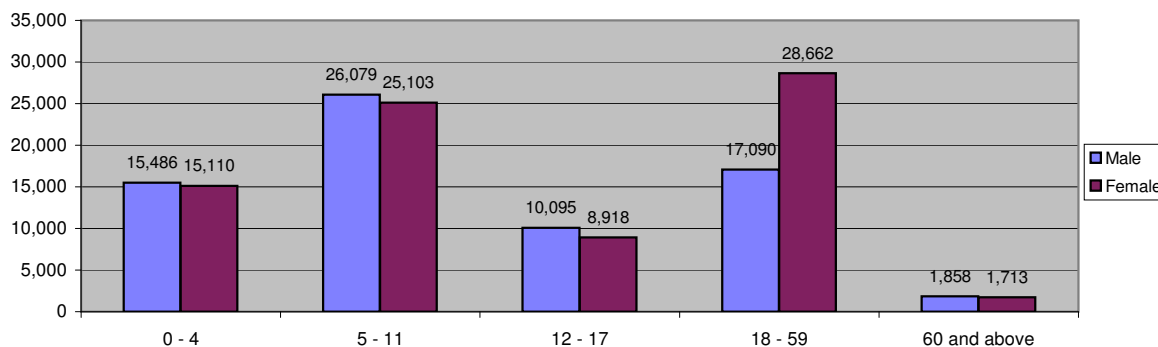


Table 2.2 - Melkadida Camp Demographic Breakdown

Age Group	Sex				Total	
	Male	(%)	Female	(%)	Total	(%)
0 - 4	4,087	10.1%	3,849	9.5%	7,936	19.6%
5 - 11	7,348	18.1%	7,169	17.7%	14,517	35.8%
12 - 17	2,899	7.2%	2,708	6.7%	5,607	13.8%
18 - 59	3,848	9.5%	7,749	19.1%	11,597	28.6%
60 and above	437	1.1%	410	1.0%	847	2.1%
Total Melkadida	18,619	46.0%	21,885	54.0%	40,504	100.0%

Figure 2.2 - Melkadida Camp Demographic Breakdown

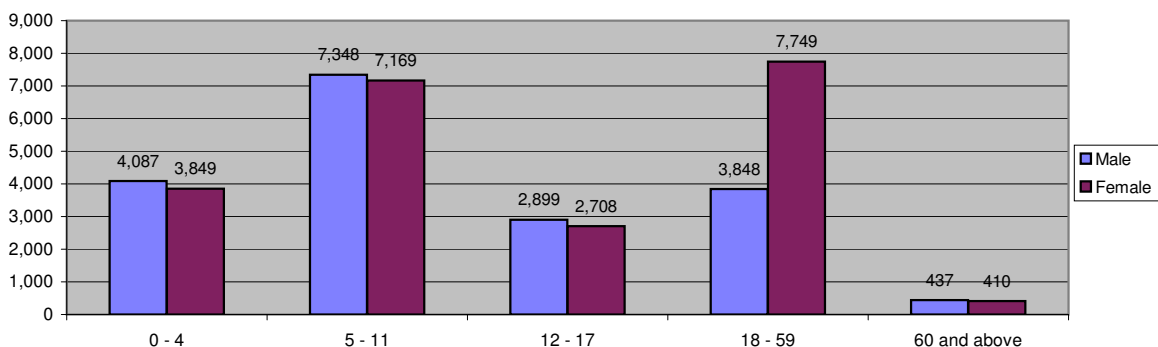


Table 2.3 - Bokolmanyo Camp Demographic Breakdown

Age Group	Sex				Total	
	Male	(%)	Female	(%)	Total	(%)
0 - 4	3,687	9.4%	3,761	9.6%	7,448	19.0%
5 - 11	6,820	17.4%	6,581	16.8%	13,401	34.2%
12 - 17	2,900	7.4%	2,422	6.2%	5,322	13.6%
18 - 59	4,487	11.5%	7,678	19.6%	12,165	31.0%
60 and above	443	1.1%	408	1.0%	851	2.2%
Total Bokolmanyo	18,337	46.8%	20,850	53.2%	39,187	100.0%

Figure 2.3 - Bokolmanyo Camp Demographic Breakdown

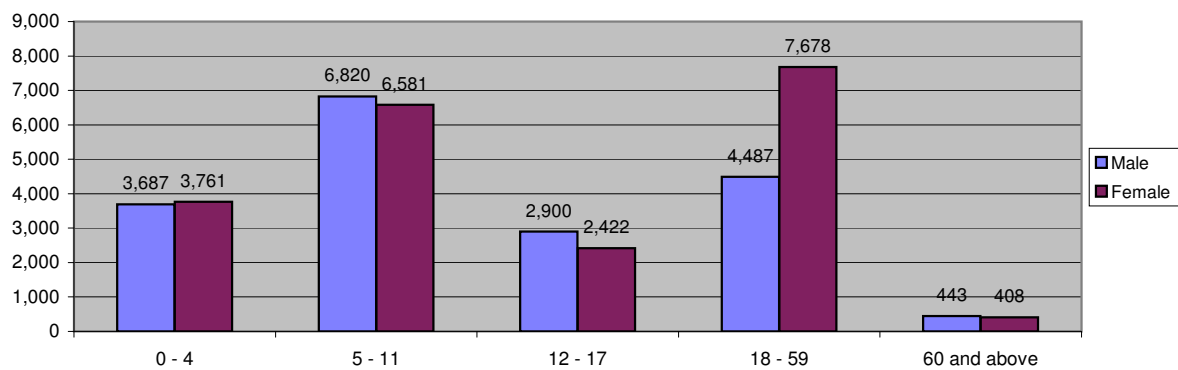


Table 2.4 - Kobe Camp Demographic Breakdown

Age Group	Sex				Total	
	81	74	Female	(%)	Total	(%)
0 - 4	2,786	10.5%	2,675	10.1%	5,461	20.6%
5 - 11	4,518	17.0%	4,166	15.7%	8,684	32.7%
12 - 17	1,668	6.3%	1,381	5.2%	3,049	11.5%
18 - 59	3,546	13.4%	4,978	18.7%	8,524	32.1%
60 and above	452	1.7%	391	1.5%	843	3.2%
Total Kobe	12,970	48.8%	13,591	51.2%	26,561	100.0%

Figure 2.4 - Kobe Camp Demographic Breakdown

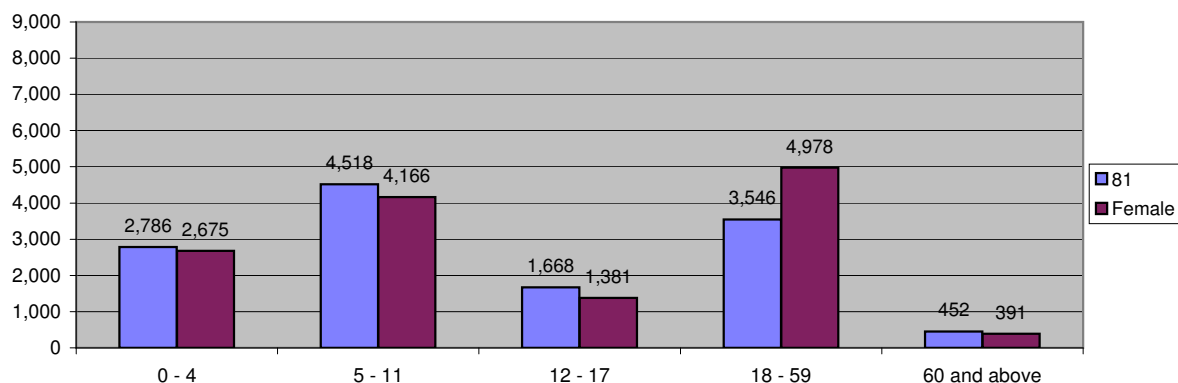


Table 2.5 - Hilaweyn Camp Demographic Breakdown

Age Group	Sex				Total	
	Male	(%)	Female	(%)	Total	(%)
0 - 4	2,849	10.8%	2,808	10.6%	5,657	21.4%
5 - 11	4,509	17.1%	4,423	16.7%	8,932	33.8%
12 - 17	1,636	6.2%	1,459	5.5%	3,095	11.7%
18 - 59	3,118	11.8%	5,010	18.9%	8,128	30.7%
60 and above	337	1.3%	293	1.1%	630	2.4%
Total Hilaweyn	12,449	47.1%	13,993	52.9%	26,442	100.0%

Figure 2.5 - Hilaweyn Camp Demographic Breakdown

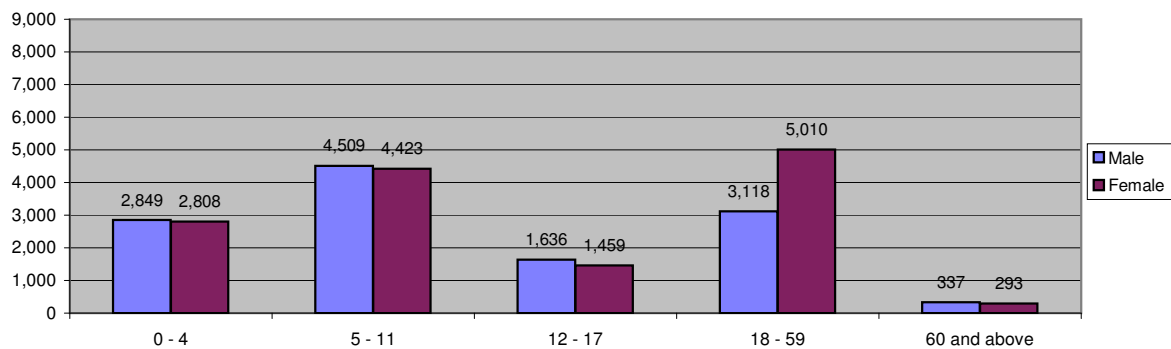


Table 2.6 - Buramino Camp Demographic Breakdown

Age Group	Sex				Total	
	Male	(%)	Female	(%)	Total	(%)
0 - 4	2,077	11.9%	2,017	11.6%	4,094	23.5%
5 - 11	2,884	16.6%	2,764	15.9%	5,648	32.4%
12 - 17	992	5.7%	948	5.4%	1,940	11.1%
18 - 59	2,091	12.0%	3,247	18.6%	5,338	30.6%
60 and above	189	1.1%	211	1.2%	400	2.3%
Total Buramino	8,233	47.3%	9,187	52.7%	17,420	100.0%

Figure 2.6 - Buramino Camp Demographic Breakdown

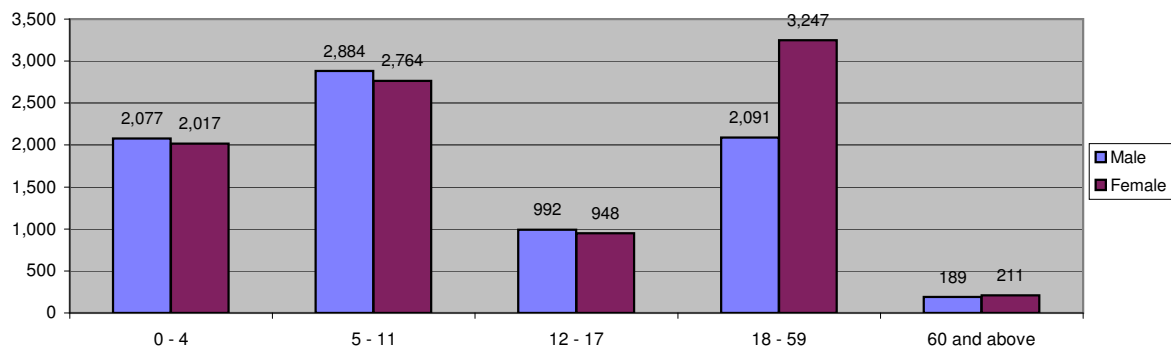


Table 2.7 - Dollo Ado Transit Centre Demographic Breakdown

Age Group	Sex				Total	
	Male	(%)	Female	(%)	Total	(%)
0 - 4	37	10.9%	39	11.5%	76	22.4%
5 - 11	34	10.0%	41	12.1%	75	22.1%
12 - 17	42	12.4%	21	6.2%	63	18.6%
18 - 59	68	20.1%	48	14.2%	116	34.2%
60 and above	4	1.2%	5	1.5%	9	2.7%
Total Transit Centre	185	54.6%	154	45.4%	339	100.0%

Figure 2.7 - Dollo Ado Transit Centre Demographic Breakdown

