

Dollo Ado Population end of Month Statistical Report

As of 30 April 2012

Figure 1.1 - Total Refugee Population in Dollo Ado

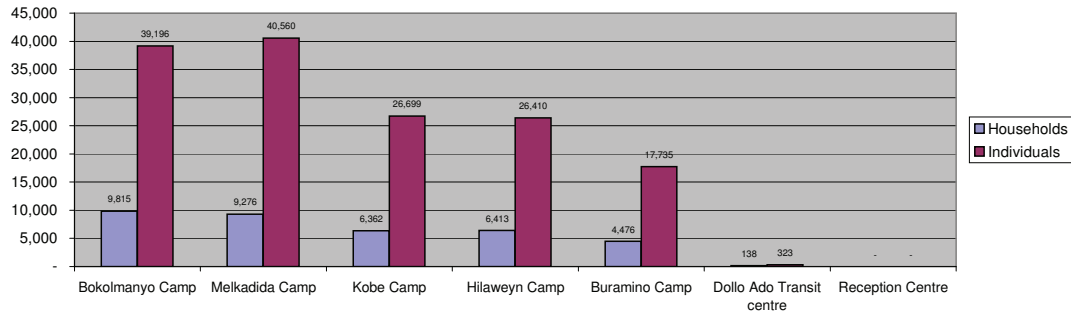


Table 1.1 - Total Refugee Population in Dollo Ado

Site/Camp	Current Total		As of 31 Dec 2010		As of 31 Dec 2011	
	Households	Individuals	Households	Individuals	Households	Individuals
Bokolmanyo Camp	9,815	39,196	3,988	14,988	9,624	38,501
Melkadida Camp	9,276	40,560	6,452	25,491	10,024	40,696
Kobe Camp	6,362	26,699	n/a	n/a	5,946	26,033
Hilaweyn Camp	6,413	26,410	n/a	n/a	6,119	25,747
Buramino Camp	4,476	17,735	n/a	n/a	911	4,045
Camp Sub-Total	36,342	150,600	10,440	40,479	32,624	135,022
Dollo Ado Transit centre	138	323	n/a	n/a	138	323
Reception Centre	n/a	n/a	n/a	n/a	n/a	n/a
Temporary Locations Sub-Total	138	323	n/a	n/a	138	323
GRAND TOTAL ALL LOCATIONS	36,480	150,923	10,440	40,479	32,762	135,345

Figure 1.2 - New Arrivals at Reception Centre by Week during the Current Month

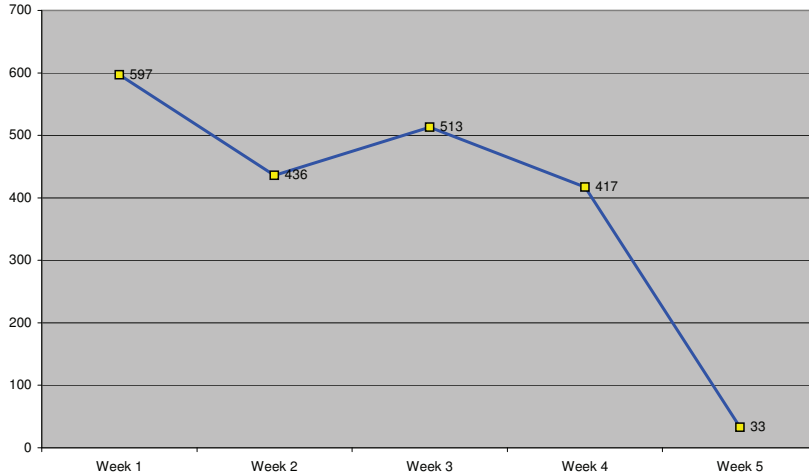
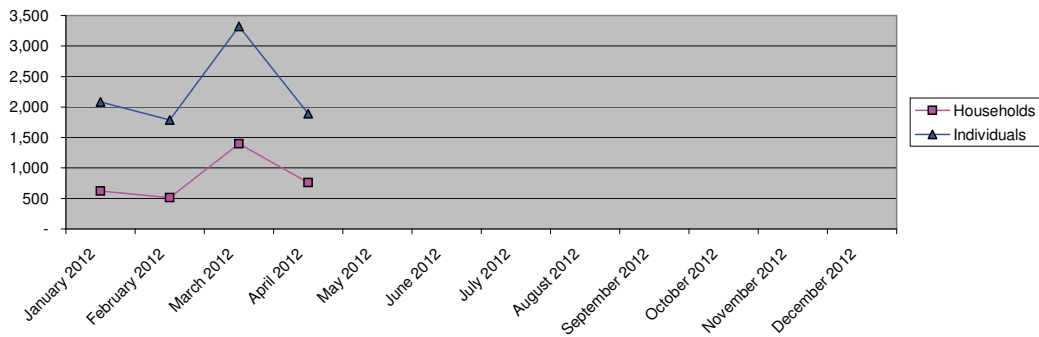


Table 1.2 - Daily New Arrivals and Pre-registration by ARRA at the Reception Centre

Date	Newly Arrived Individuals	Pre-registered by ARRA *
1-Apr-2012		**
2-Apr-2012	146	132
3-Apr-2012	165	154
4-Apr-2012	45	42
5-Apr-2012	37	31
6-Apr-2012	103	95
7-Apr-2012	101	101
8-Apr-2012		**
9-Apr-2012	190	173
10-Apr-2012	86	77
11-Apr-2012	84	75
12-Apr-2012	76	68
13-Apr-2012		**
14-Apr-2012		**
15-Apr-2012		**
16-Apr-2012	159	147
17-Apr-2012	128	121
18-Apr-2012	55	55
19-Apr-2012	48	48
20-Apr-2012	50	50
21-Apr-2012	73	73
22-Apr-2012		**
23-Apr-2012	55	55
24-Apr-2012	102	102
25-Apr-2012	82	82
26-Apr-2012	51	51
27-Apr-2012	82	82
28-Apr-2012	45	45
29-Apr-2012		**
30-Apr-2012	33	33
TOTAL THIS MONTH	1,996	1,892

* Data Provided by ARRA. Blanks indicate days when ARRA was not receiving refugees. The number of those received during these days is included in the figure of next receiving day.

Figure 1.3 - Pre-Registration Trends in 2012 (Reception Centre/ ARRA) *



* These are registration volumes by month, not cumulative figures.

Table 1.3 - Pre-Registration Trends in 2012 (Reception Centre/ ARRA)

Month	Households	Individuals
January 2012	621	2,084
February 2012	512	1,789
March 2012	1,395	3,324
April 2012	762	1,892
May 2012		
June 2012		
July 2012		
August 2012		
September 2012		
October 2012		
November 2012		
December 2012		
Total	3,290	9,089

Table 1.4 - Registration & Relocation Trends in Transit Centre since 31 Dec 2011 (up to date)

Stage of Registration & Relocation	Individuals
Total individuals fully registered so far this month	2,048
Total individuals relocated to camp so far this month	2,136
Total Individuals fully processed (hold ration card), but not yet relocated	189

Camp population by Age and Sex breakdown

As of 30 April 2012

Table 2.1 - ALL CAMPS Demographic Breakdown*

Age Group	Sex				Total	
	Male	(%)	Female	(%)	Total	(%)
0 - 4	15,590	10.3%	15,200	10.1%	30,790	20.4%
5 - 11	26,158	17.3%	25,200	16.7%	51,358	34.0%
12 - 17	10,180	6.7%	8,962	5.9%	19,142	12.7%
18 - 59	17,267	11.4%	28,776	19.1%	46,043	30.5%
60 and above	1,868	1.2%	1,722	1.1%	3,590	2.4%
Total ALL CAMPS	71,063	47.1%	79,860	52.9%	150,923	100.0%

* These total figures apply only to camps, not to the Transit Centre and Reception Centre

Figure 2.1 - ALL CAMPS Demographic Breakdown*

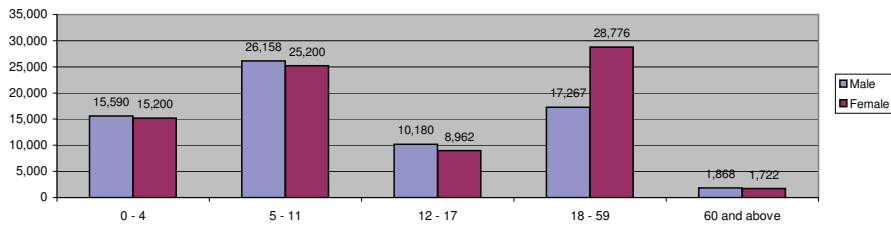


Table 2.2 - Melkadida Camp Demographic Breakdown

Age Group	Sex				Total	
	Male	(%)	Female	(%)	Total	(%)
0 - 4	4,111	10.1%	3,856	9.5%	7,967	19.6%
5 - 11	7,350	18.1%	7,178	17.7%	14,528	35.8%
12 - 17	2,899	7.1%	2,710	6.7%	5,609	13.8%
18 - 59	3,859	9.5%	7,750	19.1%	11,609	28.6%
60 and above	437	1.1%	410	1.0%	847	2.1%
Melkadida Total	18,656	46.0%	21,904	54.0%	40,560	100.0%

Figure 2.2 - Melkadida Camp Demographic Breakdown

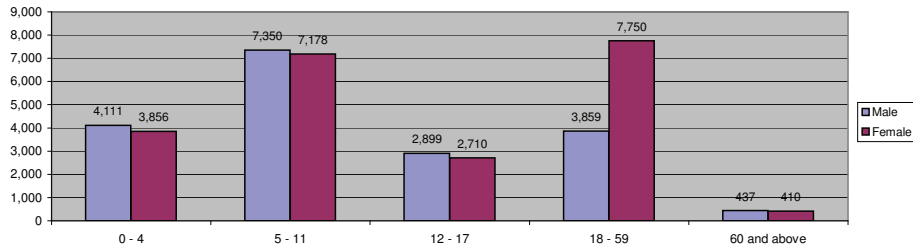
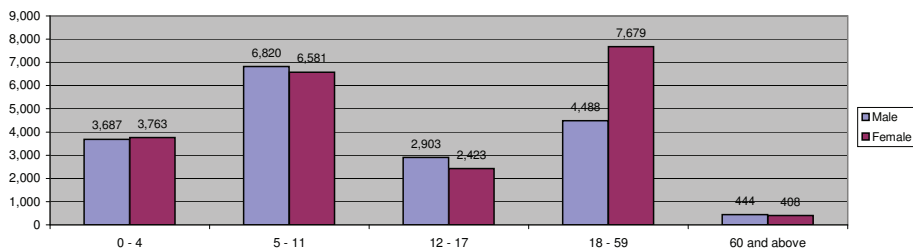


Table 2.3 - Bokolmany Camp Demographic Breakdown

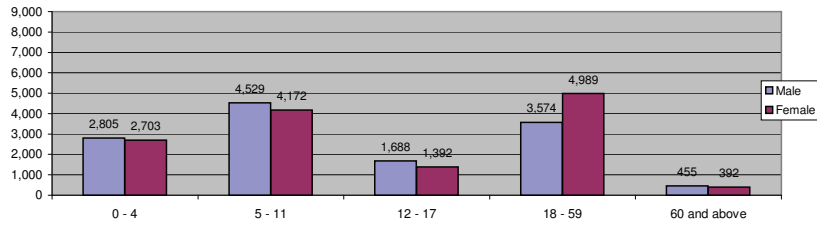
Age Group	Sex				Total	
	Male	(%)	Female	(%)	Total	(%)
0 - 4	3,687	9.4%	3,763	9.6%	7,450	19.0%
5 - 11	6,820	17.4%	6,581	16.8%	13,401	34.2%
12 - 17	2,903	7.4%	2,423	6.2%	5,326	13.6%
18 - 59	4,488	11.5%	7,679	19.6%	12,167	31.0%
60 and above	444	1.1%	408	1.0%	852	2.2%
Bokolmany Total	18,342	46.8%	20,854	53.2%	39,196	100.0%

Figure 2.3 - Bokolmany Camp Demographic Breakdown



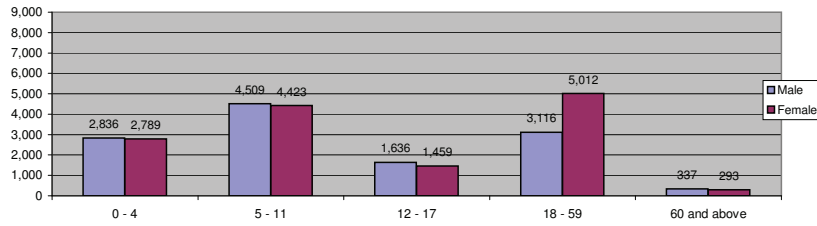
Age Group	Sex				Total	
	Male	(%)	Female	(%)	Total	(%)
0 - 4	2,805	10.5%	2,703	10.1%	5,508	20.6%
5 - 11	4,529	17.0%	4,172	15.6%	8,701	32.6%
12 - 17	1,688	6.3%	1,392	5.2%	3,080	11.5%
18 - 59	3,574	13.4%	4,989	18.7%	8,563	32.1%
60 and above	455	1.7%	392	1.5%	847	3.2%
Kobe Total	13,051	48.9%	13,648	51.1%	26,699	100.0%

Figure 2.4 - Kobe Camp Demographic Breakdown



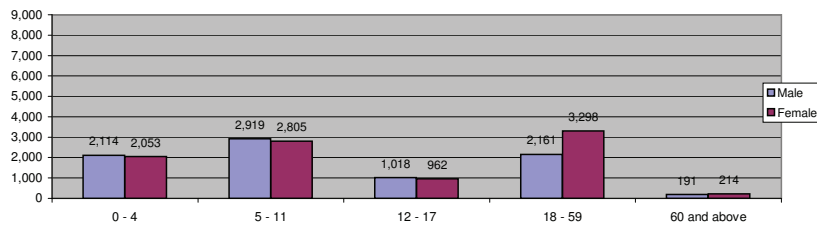
Age Group	Sex				Total	
	Male	(%)	Female	(%)	Total	(%)
0 - 4	2,836	10.7%	2,789	10.6%	5,625	21.3%
5 - 11	4,509	17.1%	4,423	16.7%	8,932	33.8%
12 - 17	1,636	6.2%	1,459	5.5%	3,095	11.7%
18 - 59	3,116	11.8%	5,012	19.0%	8,128	30.8%
60 and above	337	1.3%	293	1.1%	630	2.4%
Hilaweyn Total	12,434	47.1%	13,976	52.9%	26,410	100.0%

Figure 2.5 - Hilaweyn Camp Demographic Breakdown



Age Group	Sex				Total	
	Male	(%)	Female	(%)	Total	(%)
0 - 4	2,114	11.9%	2,053	11.6%	4,167	23.5%
5 - 11	2,919	16.5%	2,805	15.8%	5,724	32.3%
12 - 17	1,018	5.7%	962	5.4%	1,980	11.2%
18 - 59	2,161	12.2%	3,298	18.6%	5,459	30.8%
60 and above	191	1.1%	214	1.2%	405	2.3%
Buramino Total	8,403	47.4%	9,332	52.6%	17,735	100.0%

Figure 2.6 - Buramino Camp Demographic Breakdown



Age Group	Sex				Total	
	Male	(%)	Female	(%)	Total	(%)
0 - 4	37	11.5%	36	11.1%	73	22.6%
5 - 11	31	9.6%	41	12.7%	72	22.3%

12 - 17	36	11.1%	16	5.0%	52	16.1%
18 - 59	69	21.4%	48	14.9%	117	36.2%
60 and above	4	1.2%	5	1.5%	9	2.8%
Transit Centre	177	54.8%	146	45.2%	323	100.0%

Figure 2.7 - Dollo Ado Transit Center Demographic Breakdown

