

Dollo Ado Population Statistical Report

As of 27 Aug 2012

Figure 1.1 - Total Refugee Population in Dollo Ado

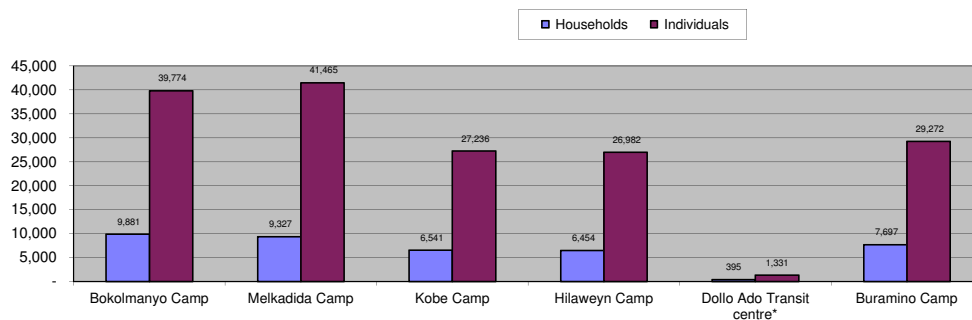


Table 1.1 - Total Refugee Population in Dollo Ado

Site/Camp	As of 31 Dec 2010		As of 31 Dec 2011		Current Total	
	Households	Individuals	Households	Individuals	Households	Individuals
Bokolmanyo Camp	3,988	14,988	9,624	38,501	9,881	39,774
Melkadida Camp	6,452	25,491	10,024	40,696	9,327	41,465
Kobe Camp	n/a	n/a	5,946	26,033	6,541	27,236
Hilaweyn Camp	n/a	n/a	6,119	25,747	6,454	26,982
Buramino Camp	n/a	n/a	911	4,045	7,697	29,272
Camp Sub-Total	10,440	40,479	32,624	135,022	39,900	164,729
Dollo Ado Transit centre*	n/a	n/a	1,902	7,284	395	1,331
Temporary Locations Sub-Total	n/a	n/a	n/a	n/a	395	1,331
GRAND TOTAL ALL LOCATIONS	10,440	40,479	34,526	142,306	40,295	166,060

* Individuals currently in the Transit Centre. All new arrivals are registered at the Transit Centre and are subsequently relocated to the camps.

Figure 1.2 - New Arrivals at Reception Centre During Current Month (Weekly)

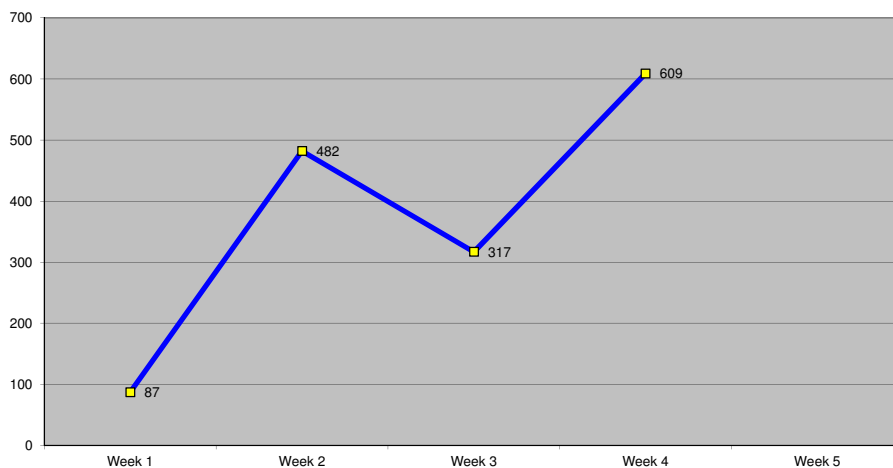


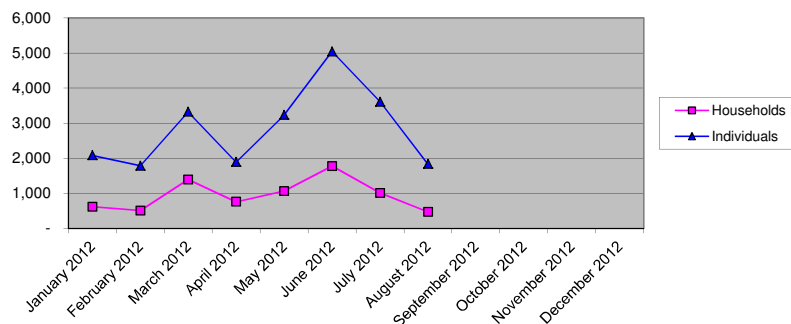
Table 1.2 - Daily New Arrivals and Pre-registration by ARRA at the Reception Centre

Date	Newly Arrived Individuals	Pre-registered by ARRA *
Wed 01 Aug 12	30	30
Thu 02 Aug 12	25	25
Fri 03 Aug 12	28	28
Sat 04 Aug 12	4	4
Sun 05 Aug 12		**
Mon 06 Aug 12	159	159
Tue 07 Aug 12	38	38
Wed 08 Aug 12	81	81
Thu 09 Aug 12	27	27
Fri 10 Aug 12	107	107
Sat 11 Aug 12	70	70
Sun 12 Aug 12		**
Mon 13 Aug 12	128	128
Tue 14 Aug 12	58	58
Wed 15 Aug 12	10	10
Thu 16 Aug 12	110	110
Fri 17 Aug 12	2	2
Sat 18 Aug 12	9	9
Sun 19 Aug 12		**
Mon 20 Aug 12	50	50
Tue 21 Aug 12	100	100
Wed 22 Aug 12	64	64
Thu 23 Aug 12	55	55
Fri 24 Aug 12	208	208
Sat 25 Aug 12	132	132
Sun 26 Aug 12		**
Mon 27 Aug 12	349	349
Tue 28 Aug 12		
Wed 29 Aug 12		
Thu 30 Aug 12		
TOTAL THIS MONTH	1,844	1,844

* Pre-registration by ARRA is not necessarily done on the day of Arrival

** Represent days when ARRA was not receiving Asylum seekers.

The number of those received during these days is include in the figure of next receiving day.

Figure 1.3 - Pre-Registration Trends in 2012 (Reception Centre/ ARRA)


Note: these are registration volumes by month, not cumulative figures.

Table 1.3 - Pre-Registration Trends in 2012 (Reception Centre/ ARRA)

Month	Households	Individuals
January 2012	621	2,084
February 2012	512	1,789
March 2012	1,395	3,324
April 2012	762	1,892
May 2012	1,065	3,232
June 2012	1,775	5,041
July 2012	1,011	3,612
August 2012	475	1,844
September 2012		
October 2012		
November 2012		
December 2012		
Total	7,616	22,818

Table 1.4 - Registration & Relocation Trends in Transit Centre up to date

Stage of Registration & Relocation	Individuals
Total individuals fully registered so far this month	1,629
Total individuals relocated to camps so far this month	959
Total individuals fully processed (have ration card), but not yet relocated	1,222

Camp Population by Age and Sex breakdown

As of 27 Aug 2012

Table 2.1 - ALL CAMPS Demographic Breakdown*

Age Group	Sex				Total	
	Male	(%)	Female	(%)	Total	(%)
0 - 4	17,902	10.9%	17,605	10.7%	35,507	21.6%
5 - 11	27,901	16.9%	26,975	16.4%	54,876	33.3%
12 - 17	10,991	6.7%	9,558	5.8%	20,549	12.5%
18 - 59	18,977	11.5%	30,860	18.7%	49,837	30.3%
60 and above	2,084	1.3%	1,874	1.1%	3,958	2.4%
Total ALL CAMPS	77,855	47.3%	86,872	52.7%	164,727	100.0%

* These total figures apply only to camps, not to the Transit Centre or Reception Centre

Figure 2.1 - ALL CAMPS Demographic Breakdown*

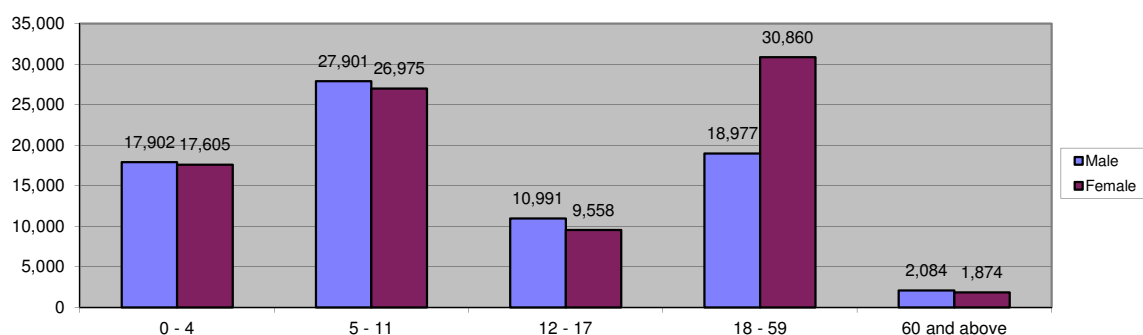


Table 2.2 - Melkadida Camp Demographic Breakdown

Age Group	Sex				Total	
	Male	(%)	Female	(%)	Total	(%)
0 - 4	4,421	10.7%	4,216	10.2%	8,637	20.8%
5 - 11	7,378	17.8%	7,200	17.4%	14,578	35.2%
12 - 17	2,933	7.1%	2,735	6.6%	5,668	13.7%
18 - 59	3,924	9.5%	7,783	18.8%	11,707	28.2%
60 and above	454	1.1%	421	1.0%	875	2.1%
Total Melkadida	19,110	46.1%	22,355	53.9%	41,465	100.0%

Figure 2.2 - Melkadida Camp Demographic Breakdown

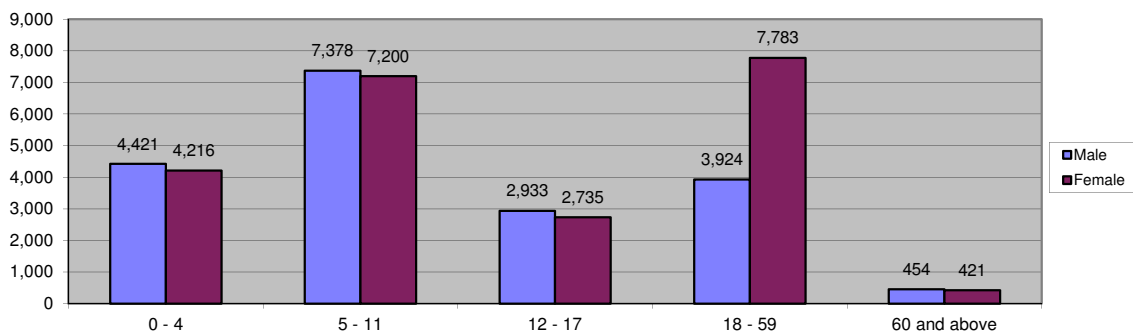


Table 2.3 - Bokolmany Camp Demographic Breakdown

Age Group	Sex				Total	
	Male	(%)	Female	(%)	Total	(%)
0 - 4	3,958	10.0%	3,977	10.0%	7,935	20.0%
5 - 11	6,831	17.2%	6,595	16.6%	13,426	33.8%
12 - 17	2,929	7.4%	2,427	6.1%	5,356	13.5%
18 - 59	4,523	11.4%	7,673	19.3%	12,196	30.7%
60 and above	446	1.1%	414	1.0%	860	2.2%
Total Bokolmany	18,687	47.0%	21,086	53.0%	39,773	100.0%

Figure 2.3 - Bokolmany Camp Demographic Breakdown

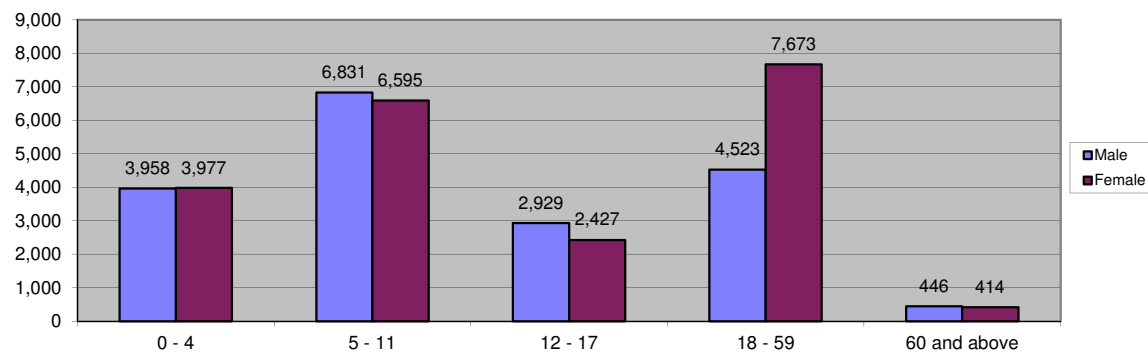


Table 2.4 - Kobe Camp Demographic Breakdown

Age Group	Sex				Total	
	Male	(%)	Female	(%)	Total	(%)
0 - 4	2,975	10.9%	2,859	10.5%	5,834	21.4%
5 - 11	4,549	16.7%	4,205	15.4%	8,754	32.1%
12 - 17	1,734	6.4%	1,409	5.2%	3,143	11.5%
18 - 59	3,633	13.3%	4,990	18.3%	8,623	31.7%
60 and above	477	1.8%	404	1.5%	881	3.2%
Total Kobe	13,368	49.1%	13,867	50.9%	27,235	100.0%

Figure 2.4 - Kobe Camp Demographic Breakdown

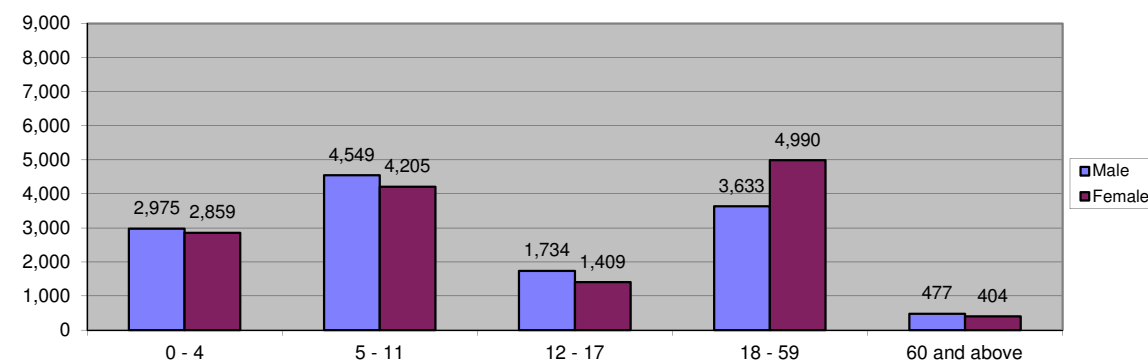


Table 2.5 - Hilaweyn Camp Demographic Breakdown

Age Group	Sex				Total	
	Male	(%)	Female	(%)	Total	(%)
0 - 4	2,972	11.0%	2,909	10.8%	5,881	21.8%
5 - 11	4,569	16.9%	4,482	16.6%	9,051	33.5%
12 - 17	1,684	6.2%	1,480	5.5%	3,164	11.7%
18 - 59	3,203	11.9%	5,041	18.7%	8,244	30.6%
60 and above	346	1.3%	296	1.1%	642	2.4%
Total Hilaweyn	12,774	47.3%	14,208	52.7%	26,982	100.0%

Figure 2.5 - Hilaweyn Camp Demographic Breakdown

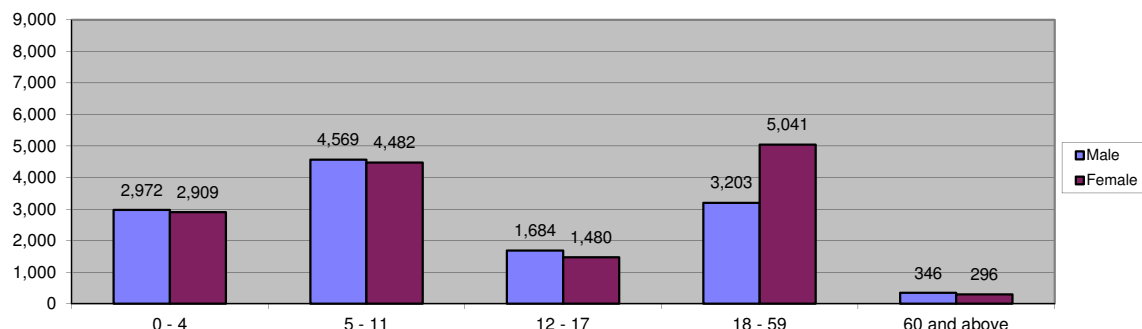


Table 2.6 - Buramino Camp Demographic Breakdown

Age Group	445				Total	
	Male	(%)	Female	(%)	Total	(%)
0 - 4	3,576	12.2%	3,644	12.4%	7,220	24.7%
5 - 11	4,574	15.6%	4,493	15.3%	9,067	31.0%
12 - 17	1,711	5.8%	1,507	5.1%	3,218	11.0%
18 - 59	3,694	12.6%	5,373	18.4%	9,067	31.0%
60 and above	361	1.2%	339	1.2%	700	2.4%
Total Buramino	13,916	47.5%	15,356	52.5%	29,272	100.0%

Figure 2.6 - Buramino Camp Demographic Breakdown

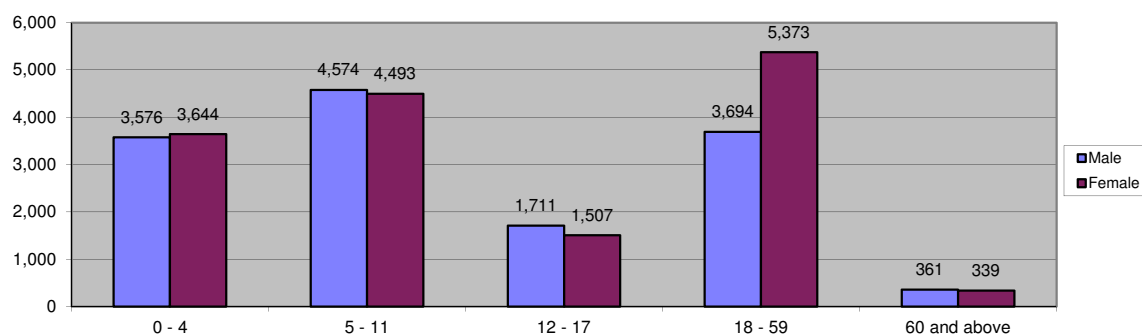


Table 2.7 - Dollo Ado Transit Centre Demographic Breakdown

Age Group	Sex				Total	
	Male	(%)	Female	(%)	Total	(%)
0 - 4	170	12.8%	169	12.7%	339	25.5%
5 - 11	200	15.0%	210	15.8%	410	30.8%
12 - 17	81	6.1%	70	5.3%	151	11.3%
18 - 59	157	11.8%	238	17.9%	395	29.7%
60 and above	16	1.2%	20	1.5%	36	2.7%
Total Transit Centre	624	46.9%	707	53.1%	1,331	100.0%

Figure 2.7 - Dollo Ado Transit Centre Demographic Breakdown

