

Dollo Ado Population Statistical Report

As of 29 Aug 2012

Figure 1.1 - Total Refugee Population in Dollo Ado

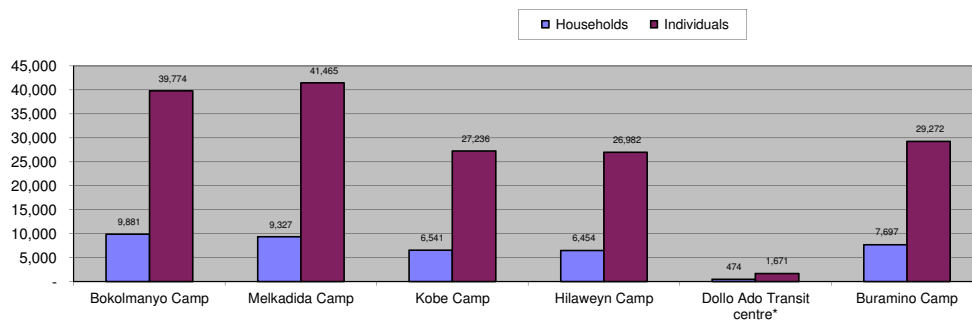


Table 1.1 - Total Refugee Population in Dollo Ado

| Site/Camp | As of 31 Dec 2010 | | As of 31 Dec 2011 | | Current Total | |
|--------------------------------------|-------------------|---------------|-------------------|----------------|---------------|----------------|
| | Households | Individuals | Households | Individuals | Households | Individuals |
| Bokolmanyo Camp | 3,988 | 14,988 | 9,624 | 38,501 | 9,881 | 39,774 |
| Melkadida Camp | 6,452 | 25,491 | 10,024 | 40,696 | 9,327 | 41,465 |
| Kobe Camp | n/a | n/a | 5,946 | 26,033 | 6,541 | 27,236 |
| Hilaweyn Camp | n/a | n/a | 6,119 | 25,747 | 6,454 | 26,982 |
| Buramino Camp | n/a | n/a | 911 | 4,045 | 7,697 | 29,272 |
| Camp Sub-Total | 10,440 | 40,479 | 32,624 | 135,022 | 39,900 | 164,729 |
| Dollo Ado Transit centre* | n/a | n/a | 1,902 | 7,284 | 474 | 1,671 |
| Temporary Locations Sub-Total | n/a | n/a | n/a | n/a | 474 | 1,671 |
| GRAND TOTAL ALL LOCATIONS | 10,440 | 40,479 | 34,526 | 142,306 | 40,374 | 166,400 |

* Individuals currently in the Transit Centre. All new arrivals are registered at the Transit Centre and are subsequently relocated to the camps.

Figure 1.2 - New Arrivals at Reception Centre During Current Month (Weekly)

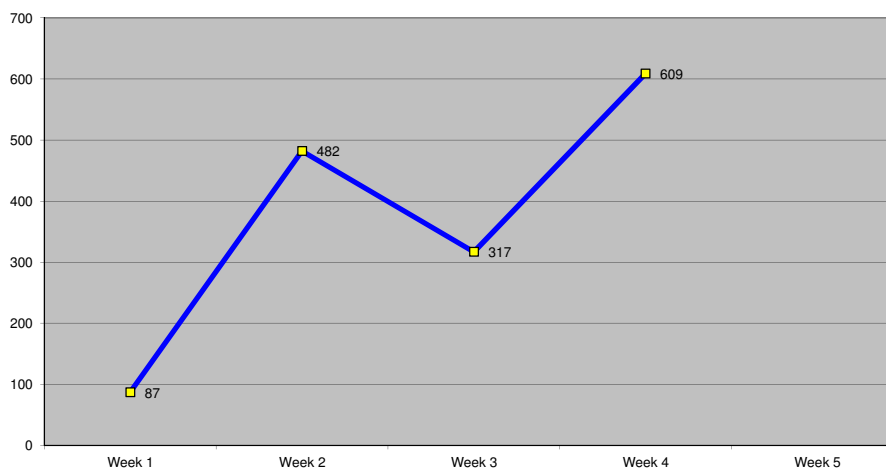


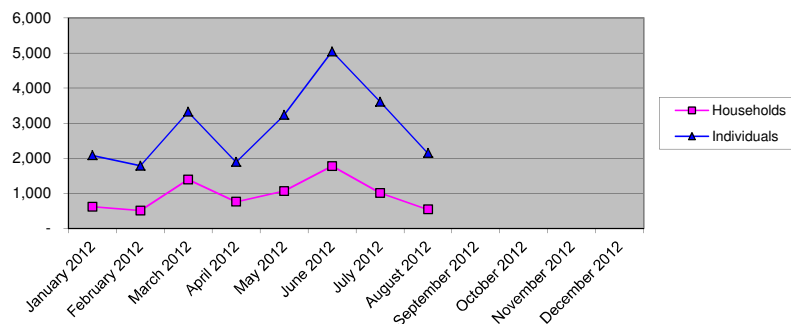
Table 1.2 - Daily New Arrivals and Pre-registration by ARRA at the Reception Centre

| Date | Newly Arrived Individuals | Pre-registered by ARRA * |
|-------------------------|------------------------------|-----------------------------|
| Wed 01 Aug 12 | 30 | 30 |
| Thu 02 Aug 12 | 25 | 25 |
| Fri 03 Aug 12 | 28 | 28 |
| Sat 04 Aug 12 | 4 | 4 |
| Sun 05 Aug 12 | | ** |
| Mon 06 Aug 12 | 159 | 159 |
| Tue 07 Aug 12 | 38 | 38 |
| Wed 08 Aug 12 | 81 | 81 |
| Thu 09 Aug 12 | 27 | 27 |
| Fri 10 Aug 12 | 107 | 107 |
| Sat 11 Aug 12 | 70 | 70 |
| Sun 12 Aug 12 | | ** |
| Mon 13 Aug 12 | 128 | 128 |
| Tue 14 Aug 12 | 58 | 58 |
| Wed 15 Aug 12 | 10 | 10 |
| Thu 16 Aug 12 | 110 | 110 |
| Fri 17 Aug 12 | 2 | 2 |
| Sat 18 Aug 12 | 9 | 9 |
| Sun 19 Aug 12 | | ** |
| Mon 20 Aug 12 | 50 | 50 |
| Tue 21 Aug 12 | 100 | 100 |
| Wed 22 Aug 12 | 64 | 64 |
| Thu 23 Aug 12 | 55 | 55 |
| Fri 24 Aug 12 | 208 | 208 |
| Sat 25 Aug 12 | 132 | 132 |
| Sun 26 Aug 12 | | ** |
| Mon 27 Aug 12 | 349 | 349 |
| Tue 28 Aug 12 | | ** |
| Wed 29 Aug 12 | 304 | 304 |
| Thu 30 Aug 12 | | |
| TOTAL THIS MONTH | 2,148 | 2,148 |

* Pre-registration by ARRA is not necessarily done on the day of Arrival

** Represent days when ARRA was not receiving Asylum seekers.

The number of those received during these days is include in the figure of next receiving day.

Figure 1.3 - Pre-Registration Trends in 2012 (Reception Centre/ ARRA)


Note: these are registration volumes by month, not cumulative figures.

Table 1.3 - Pre-Registration Trends in 2012 (Reception Centre/ ARRA)

| Month | Households | Individuals |
|----------------|--------------|---------------|
| January 2012 | 621 | 2,084 |
| February 2012 | 512 | 1,789 |
| March 2012 | 1,395 | 3,324 |
| April 2012 | 762 | 1,892 |
| May 2012 | 1,065 | 3,232 |
| June 2012 | 1,775 | 5,041 |
| July 2012 | 1,011 | 3,612 |
| August 2012 | 542 | 2,148 |
| September 2012 | | |
| October 2012 | | |
| November 2012 | | |
| December 2012 | | |
| Total | 7,683 | 23,122 |

Table 1.4 - Registration & Relocation Trends in Transit Centre up to date

| Stage of Registration & Relocation | Individuals |
|---|-------------|
| Total individuals fully registered so far this month | 1,981 |
| Total individuals relocated to camps so far this month | 959 |
| Total individuals fully processed (have ration card), but not yet relocated | 1,561 |

Camp Population by Age and Sex breakdown

As of 29 Aug 2012

Table 2.1 - ALL CAMPS Demographic Breakdown*

| Age Group | Sex | | | | Total | |
|------------------------|---------------|--------------|---------------|--------------|----------------|---------------|
| | Male | (%) | Female | (%) | Total | (%) |
| 0 - 4 | 17,903 | 10.9% | 17,606 | 10.7% | 35,509 | 21.6% |
| 5 - 11 | 27,901 | 16.9% | 26,975 | 16.4% | 54,876 | 33.3% |
| 12 - 17 | 10,991 | 6.7% | 9,558 | 5.8% | 20,549 | 12.5% |
| 18 - 59 | 18,977 | 11.5% | 30,860 | 18.7% | 49,837 | 30.3% |
| 60 and above | 2,084 | 1.3% | 1,874 | 1.1% | 3,958 | 2.4% |
| Total ALL CAMPS | 77,856 | 47.3% | 86,873 | 52.7% | 164,729 | 100.0% |

* These total figures apply only to camps, not to the Transit Centre or Reception Centre

Figure 2.1 - ALL CAMPS Demographic Breakdown*

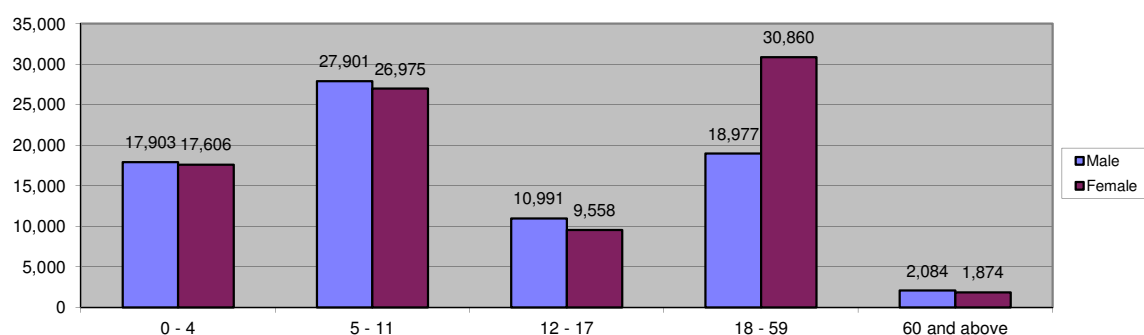


Table 2.2 - Melkadida Camp Demographic Breakdown

| Age Group | Sex | | | | Total | |
|------------------------|---------------|--------------|---------------|--------------|---------------|---------------|
| | Male | (%) | Female | (%) | Total | (%) |
| 0 - 4 | 4,421 | 10.7% | 4,216 | 10.2% | 8,637 | 20.8% |
| 5 - 11 | 7,378 | 17.8% | 7,200 | 17.4% | 14,578 | 35.2% |
| 12 - 17 | 2,933 | 7.1% | 2,735 | 6.6% | 5,668 | 13.7% |
| 18 - 59 | 3,924 | 9.5% | 7,783 | 18.8% | 11,707 | 28.2% |
| 60 and above | 454 | 1.1% | 421 | 1.0% | 875 | 2.1% |
| Total Melkadida | 19,110 | 46.1% | 22,355 | 53.9% | 41,465 | 100.0% |

Figure 2.2 - Melkadida Camp Demographic Breakdown

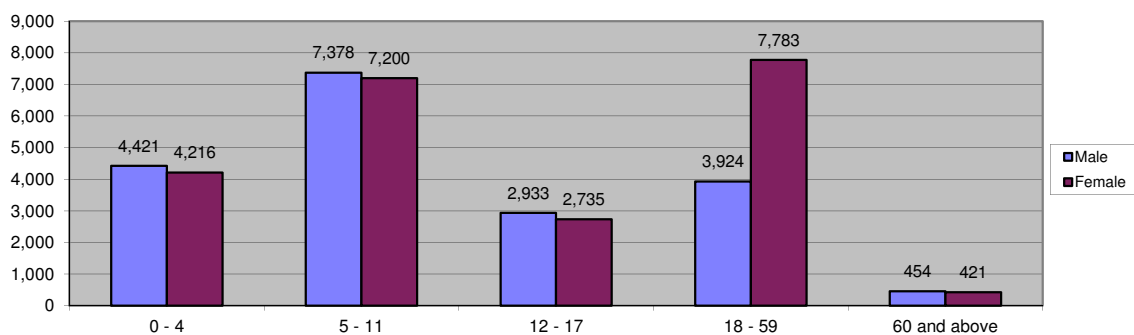


Table 2.3 - Bokolmanyo Camp Demographic Breakdown

| Age Group | Sex | | | | Total | |
|-------------------------|---------------|--------------|---------------|--------------|---------------|---------------|
| | Male | (%) | Female | (%) | Total | (%) |
| 0 - 4 | 3,958 | 10.0% | 3,978 | 10.0% | 7,936 | 20.0% |
| 5 - 11 | 6,831 | 17.2% | 6,595 | 16.6% | 13,426 | 33.8% |
| 12 - 17 | 2,929 | 7.4% | 2,427 | 6.1% | 5,356 | 13.5% |
| 18 - 59 | 4,523 | 11.4% | 7,673 | 19.3% | 12,196 | 30.7% |
| 60 and above | 446 | 1.1% | 414 | 1.0% | 860 | 2.2% |
| Total Bokolmanyo | 18,687 | 47.0% | 21,087 | 53.0% | 39,774 | 100.0% |

Figure 2.3 - Bokolmanyo Camp Demographic Breakdown

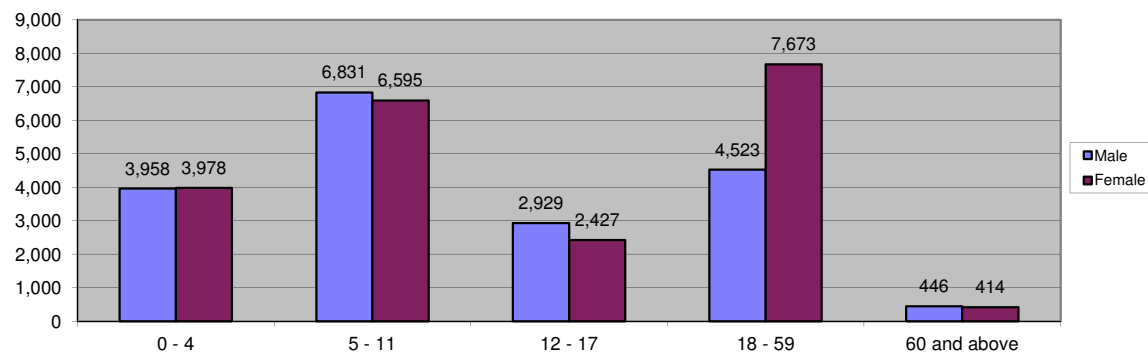


Table 2.4 - Kobe Camp Demographic Breakdown

| Age Group | Sex | | | | Total | |
|-------------------|---------------|--------------|---------------|--------------|---------------|---------------|
| | Male | (%) | Female | (%) | Total | (%) |
| 0 - 4 | 2,976 | 10.9% | 2,859 | 10.5% | 5,835 | 21.4% |
| 5 - 11 | 4,549 | 16.7% | 4,205 | 15.4% | 8,754 | 32.1% |
| 12 - 17 | 1,734 | 6.4% | 1,409 | 5.2% | 3,143 | 11.5% |
| 18 - 59 | 3,633 | 13.3% | 4,990 | 18.3% | 8,623 | 31.7% |
| 60 and above | 477 | 1.8% | 404 | 1.5% | 881 | 3.2% |
| Total Kobe | 13,369 | 49.1% | 13,867 | 50.9% | 27,236 | 100.0% |

Figure 2.4 - Kobe Camp Demographic Breakdown

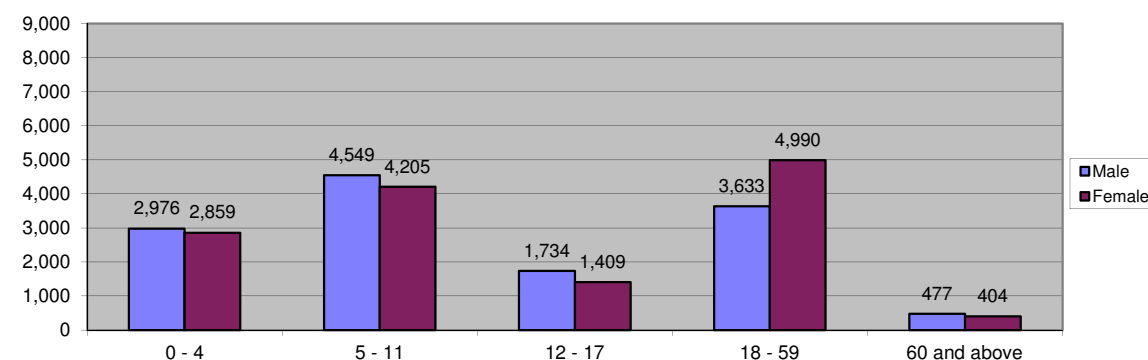


Table 2.5 - Hilaweyn Camp Demographic Breakdown

| Age Group | Sex | | | | Total | |
|-----------------------|---------------|--------------|---------------|--------------|---------------|---------------|
| | Male | (%) | Female | (%) | Total | (%) |
| 0 - 4 | 2,972 | 11.0% | 2,909 | 10.8% | 5,881 | 21.8% |
| 5 - 11 | 4,569 | 16.9% | 4,482 | 16.6% | 9,051 | 33.5% |
| 12 - 17 | 1,684 | 6.2% | 1,480 | 5.5% | 3,164 | 11.7% |
| 18 - 59 | 3,203 | 11.9% | 5,041 | 18.7% | 8,244 | 30.6% |
| 60 and above | 346 | 1.3% | 296 | 1.1% | 642 | 2.4% |
| Total Hilaweyn | 12,774 | 47.3% | 14,208 | 52.7% | 26,982 | 100.0% |

Figure 2.5 - Hilaweyn Camp Demographic Breakdown

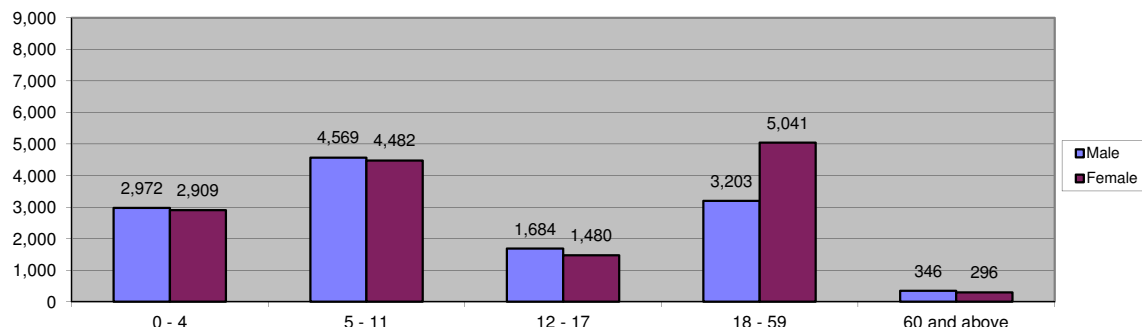


Table 2.6 - Buramino Camp Demographic Breakdown

| Age Group | 445 | | | | Total | |
|-----------------------|---------------|--------------|---------------|--------------|---------------|---------------|
| | Male | (%) | Female | (%) | Total | (%) |
| 0 - 4 | 3,576 | 12.2% | 3,644 | 12.4% | 7,220 | 24.7% |
| 5 - 11 | 4,574 | 15.6% | 4,493 | 15.3% | 9,067 | 31.0% |
| 12 - 17 | 1,711 | 5.8% | 1,507 | 5.1% | 3,218 | 11.0% |
| 18 - 59 | 3,694 | 12.6% | 5,373 | 18.4% | 9,067 | 31.0% |
| 60 and above | 361 | 1.2% | 339 | 1.2% | 700 | 2.4% |
| Total Buramino | 13,916 | 47.5% | 15,356 | 52.5% | 29,272 | 100.0% |

Figure 2.6 - Buramino Camp Demographic Breakdown

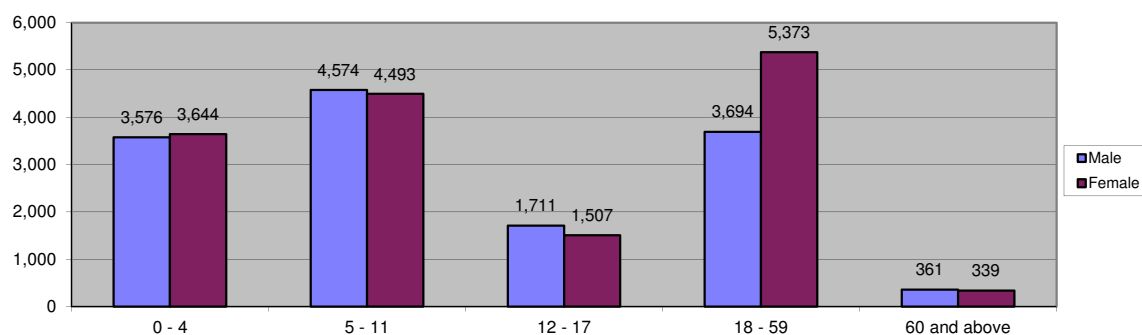


Table 2.7 - Dollo Ado Transit Centre Demographic Breakdown

| Age Group | Sex | | | | Total | |
|-----------------------------|------------|--------------|------------|--------------|--------------|---------------|
| | Male | (%) | Female | (%) | Total | (%) |
| 0 - 4 | 211 | 12.6% | 221 | 13.2% | 432 | 25.9% |
| 5 - 11 | 247 | 14.8% | 264 | 15.8% | 511 | 30.6% |
| 12 - 17 | 98 | 5.9% | 94 | 5.6% | 192 | 11.5% |
| 18 - 59 | 191 | 11.4% | 305 | 18.3% | 496 | 29.7% |
| 60 and above | 16 | 1.0% | 24 | 1.4% | 40 | 2.4% |
| Total Transit Centre | 763 | 45.7% | 908 | 54.3% | 1,671 | 100.0% |

Figure 2.7 - Dollo Ado Transit Centre Demographic Breakdown

