

Dollo Ado Population end of Month Statistical Report

As of 31 January 2014

Figure 1.1 - Total Refugee Population in Dollo Ado

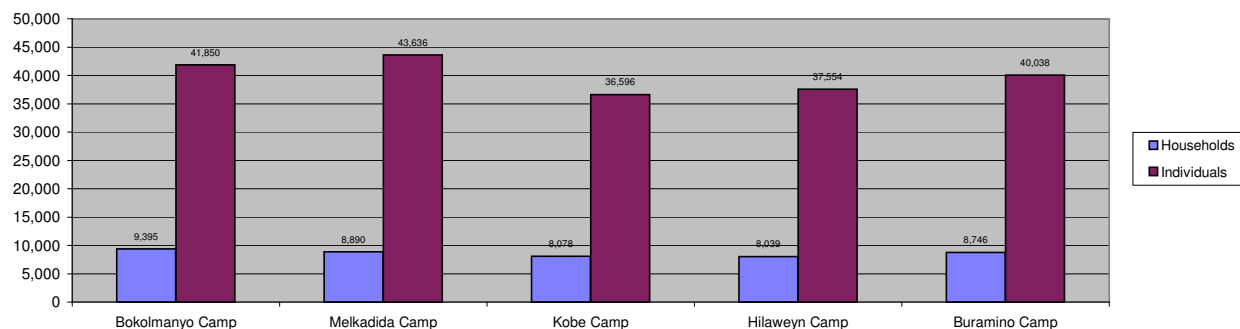


Table 1.1 - Total Refugee Population in Dollo Ado

Site/Camp	Current Total		As of end 2010		As of end 2011		As of end 2012		As of end 2013	
	Households	Individuals	Households	Individuals	Households	Individuals	Households	Individuals	Households	Individuals
Bokolmany Camp	9,395	41,850	3,988	14,988	9,624	38,501	9,878	40,423	9,400	41,670
Melkadida Camp	8,890	43,636	6,452	25,491	10,024	40,696	9,350	42,365	8,887	43,480
Kobe Camp	8,078	36,596	n/a	n/a	5946	26033	7,452	31,656	8,067	36,488
Hilaweyn Camp	8,039	37,554	n/a	n/a	6119	25747	7,191	30,960	8,012	37,305
Buramino Camp	8,746	40,038	n/a	n/a	911	4045	8,837	35,207	8,851	40,114
Camp Sub-Total	43,148	199,674	10,440	40,479	31,713	130,977	42,708	180,611	43,217	199,057
Dollo Ado Reception centre*	9	30	n/a	n/a	-	-	-	-	-	-
Temporary Locations Sub-Total	9	30	n/a	n/a	-	-	-	-	-	-
GRAND TOTAL ALL LOCATIONS	43,157	199,704	10,440	40,479	31,713	130,977	42,708	180,611	42,809	180,986

Figure 1.2 - New Arrivals at Reception Centre by Week during the Current Month

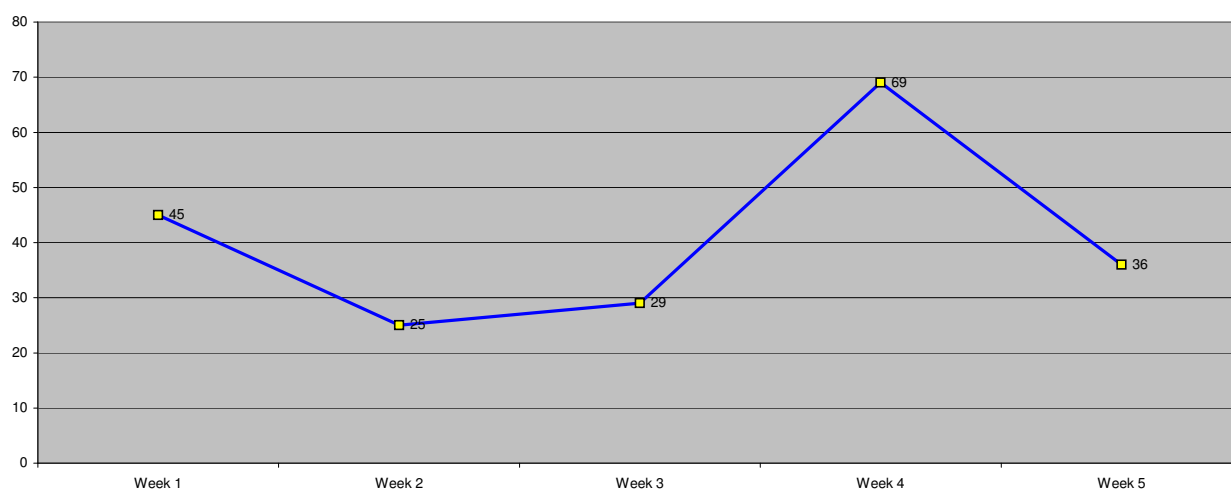


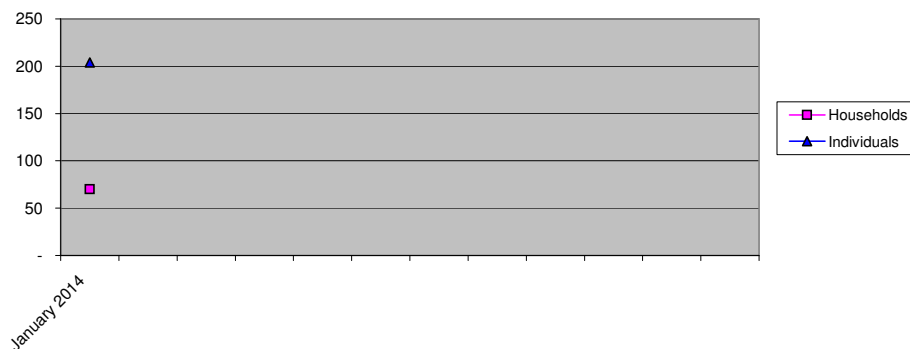
Table 1.2 - Daily New Arrivals Registered by UNHCR at the Reception Centre

Date	Newly Arrived Individuals	Pre-registered by UNHCR *
1-Jan-2014	0	0**
2-Jan-2014	43	43
3-Jan-2014	2	2
4-Jan-2014	0	0**
5-Jan-2014	0	0**
6-Jan-2014	0	0**
7-Jan-2014	0	0**
8-Jan-2014	17	17
9-Jan-2014	0	0**
10-Jan-2014	8	8
11-Jan-2014	0	0**
12-Jan-2014	0	0**
13-Jan-2014	0	0**
14-Jan-2014	18	18
15-Jan-2014	8	8
16-Jan-2014	3	3
17-Jan-2014	0	0**
18-Jan-2014	0	0**
19-Jan-2014	0	0**
20-Jan-2014	0	0**
21-Jan-2014	35	35
22-Jan-2014	10	10
23-Jan-2014	15	15
24-Jan-2014	9	9
25-Jan-2014	0	0**
26-Jan-2014	0	0**
27-Jan-2014	6	6
28-Jan-2014	6	6
29-Jan-2014	6	6
30-Jan-2014	16	16
31-Jan-2014	2	2
TOTAL THIS MONTH	204	204

* Blanks indicate days when UNHCR was not register refugees.

The number of those received during these days is included in the figure of next receiving day.

Figure 1.3 - Pre-Registration Trends in 2013 (Reception Centre/ UNHCR) *



* These are registration volumes by month, not cumulative figures.

Table 1.3 - Pre-Registration Trends in 2013 (Reception Centre/ UNHCR)

Month	Households	Individuals
January 2014	70	204
Total	70	204

Table 1.4 - Registration & Relocation Trends in Reception Centre for the month of July

Stage of Registration & Relocation	Individuals
Total individuals fully registered so far this month	204
Total individuals relocated to camp so far this month	359
Total Individuals fully processed (hold ration card), but not yet relocated	30

Camp population by Age and Sex breakdown

As of 31 January 2014

Table 2.1 - ALL CAMPS Demographic Breakdown*

Age Group	Sex				Total	
	Male	(%)	Female	(%)	Total	(%)
0 - 4	16,401	8.2%	16,374	8.2%	32,775	16.4%
5 - 11	36,524	18.3%	35,916	18.0%	72,440	36.3%
12 - 17	16,103	8.1%	14,382	7.2%	30,485	15.3%
18 - 59	21,738	10.9%	37,576	18.8%	59,314	29.7%
60 and above	2,399	1.2%	2,261	1.1%	4,660	2.3%
Total ALL CAMPS	93,165	46.7%	106,509	53.3%	199,674	100.0%

* These total figures apply only to camps, not to the Transit Centre and Reception Centre

Figure 2.1 - ALL CAMPS Demographic Breakdown*

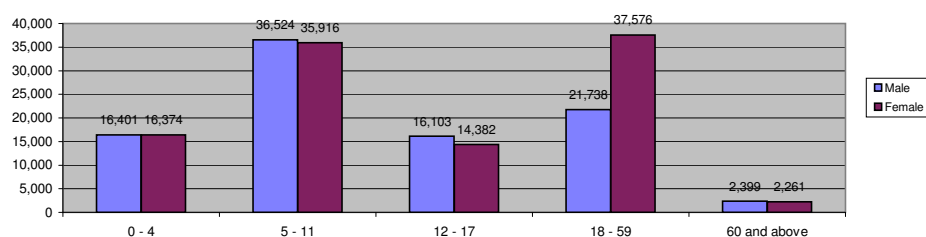


Table 2.2 - Melkadida Camp Demographic Breakdown

Age Group	Sex				Total	
	Male	(%)	Female	(%)	Total	(%)
0 - 4	3,247	7.4%	3,151	7.2%	6,398	14.7%
5 - 11	8,072	18.5%	7,841	18.0%	15,913	36.5%
12 - 17	3,904	8.9%	3,634	8.3%	7,538	17.3%
18 - 59	4,449	10.2%	8,409	19.3%	12,858	29.5%
60 and above	480	1.1%	449	1.0%	929	2.1%
Melkadida Total	20,152	46.2%	23,484	53.8%	43,636	100.0%

Figure 2.2 - Melkadida Camp Demographic Breakdown

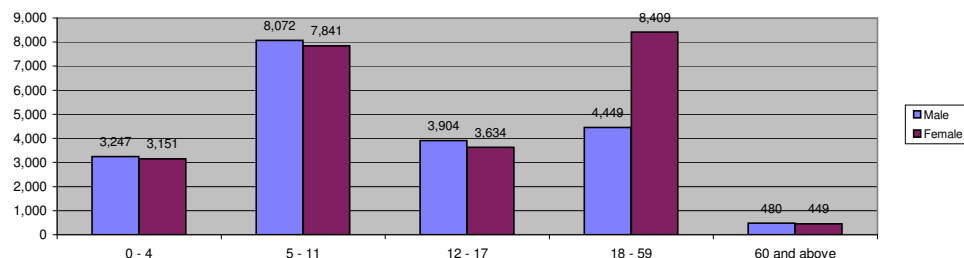
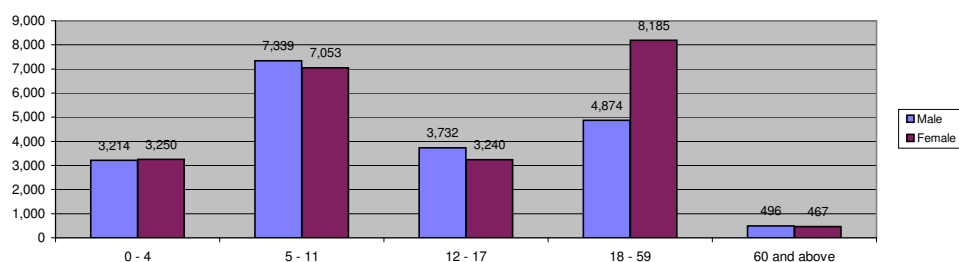


Table 2.3 - Bokolmany Camp Demographic Breakdown

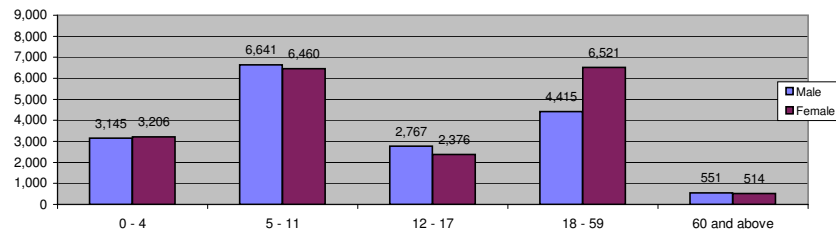
Age Group	Sex				Total	
	Male	(%)	Female	(%)	Total	(%)
0 - 4	3,214	7.7%	3,250	7.8%	6,464	15.4%
5 - 11	7,339	17.5%	7,053	16.9%	14,392	34.4%
12 - 17	3,732	8.9%	3,240	7.7%	6,972	16.7%
18 - 59	4,874	11.6%	8,185	19.6%	13,059	31.2%
60 and above	496	1.2%	467	1.1%	963	2.3%
Bokolmanyol Total	19,655	47.0%	22,195	53.0%	41,850	100.0%

Figure 2.3 - Bokolmany Camp Demographic Breakdown



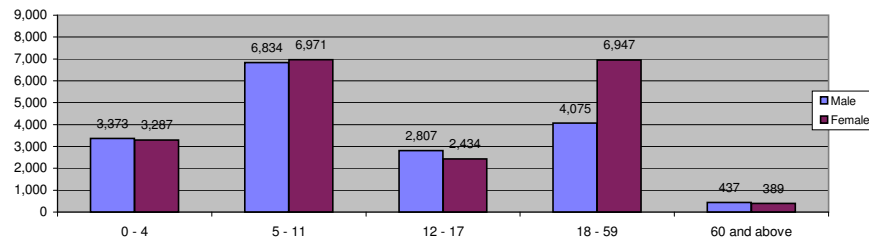
Age Group	Sex				Total	
	Male	(%)	Female	(%)	Total	(%)
0 - 4	3,145	8.6%	3,206	8.8%	6,351	17.4%
5 - 11	6,641	18.1%	6,460	17.7%	13,101	35.8%
12 - 17	2,767	7.6%	2,376	6.5%	5,143	14.1%
18 - 59	4,415	12.1%	6,521	17.8%	10,936	29.9%
60 and above	551	1.5%	514	1.4%	1,065	2.9%
Kobe Total	17,519	47.9%	19,077	52.1%	36,596	100.0%

Figure 2.4 - Kobe Camp Demographic Breakdown



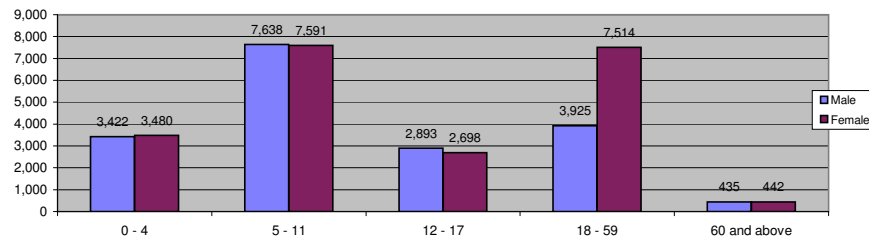
Age Group	Sex				Total	
	Male	(%)	Female	(%)	Total	(%)
0 - 4	3,373	9.0%	3,287	8.8%	6,660	17.7%
5 - 11	6,834	18.2%	6,971	18.6%	13,805	36.8%
12 - 17	2,807	7.5%	2,434	6.5%	5,241	14.0%
18 - 59	4,075	10.9%	6,947	18.5%	11,022	29.3%
60 and above	437	1.2%	389	1.0%	826	2.2%
Hilaweyn Total	17,526	46.7%	20,028	53.3%	37,554	100.0%

Figure 2.5 - Hilaweyn Camp Demographic Breakdown



Age Group	Sex				Total	
	Male	(%)	Female	(%)	Total	(%)
0 - 4	3,422	8.5%	3,480	8.7%	6,902	17.2%
5 - 11	7,638	19.1%	7,591	19.0%	15,229	38.0%
12 - 17	2,893	7.2%	2,698	6.7%	5,591	14.0%
18 - 59	3,925	9.8%	7,514	18.8%	11,439	28.6%
60 and above	435	1.1%	442	1.1%	877	2.2%
Buramino Total	18,313	45.7%	21,725	54.3%	40,038	100.0%

Figure 2.6 - Buramino Camp Demographic Breakdown



Camp Population change during the Month

As of 31 January 2014

Table 3.1 - Population Changes

		Increase						Decrease								
Camp	Population at the Beginning of Month	New Arrival / In Situ Reg *	Newborns	Transfers in from Other Camps **	Reactivated	Other	Total Increase	Deaths	Resettlement	Transfer out to Other Camps	Organized Repatriation	VRF Assisted Self Repatriation	Confirmed Spontaneous Repatriation	Other Inactivation	Total Decrease	Population at the End of Month
Bokolmanyu	41,670	-	129	30	21	-	180	-	-	-	-	-	-	-	-	41,850
Melkadida	43,494	-	143	4	-	-	147	-	-	5	-	-	-	-	5	43,636
Kobe	36,488	67	119	11	9	-	206	-	-	95	-	-	-	3	98	36,596
Hilaweyen	37,305	57	124	70	1	-	252	-	-	-	-	-	-	3	3	37,554
Buramino	40,114	60	84	16	2	-	162	3	-	-	-	-	-	235	238	40,038
Total	199,071	184	599	131	33	-	947	-	-	100	-	-	-	241	344	199,674

* All new arrivals are registered at the Reception Centre after which they are relocated to the camps.

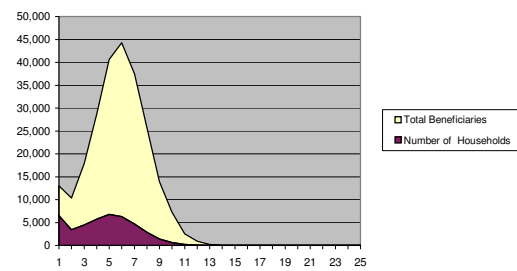
** Mainly due to family re-unification

Camp Population Composition

As of 31 January 2014

Family Size	Number of Households	Total Beneficiaries
1	6,508	6,508
2	3,451	6,902
3	4,480	13,440
4	5,731	22,924
5	6,766	33,830
6	6,328	37,968
7	4,683	32,781
8	2,848	22,784
9	1,393	12,537
10	663	6,630
11	211	2,321
12	71	852
13	13	169
14	2	28
15		
16		
17		
18		
19		
20		
21		
22		
23		
24		
25		
Total	43,148	199,674

Figure 4.1- ALL CAMPS Household Size



Family Size	Number of Households	Total Beneficiaries
1	1,016	1,016
2	653	1,306
3	934	2,802
4	1,182	4,728
5	1,416	7,080
6	1,385	8,310
7	1,061	7,427
8	621	4,968
9	354	3,186
10	175	1,750
11	60	660
12	26	312
13	7	91
14		
15		
16		
17		
18		
19		
20		
21		
22		
23		
24		
25		
Total	8,890	43,636

Figure 4.2- Melkadida Camp Household Size

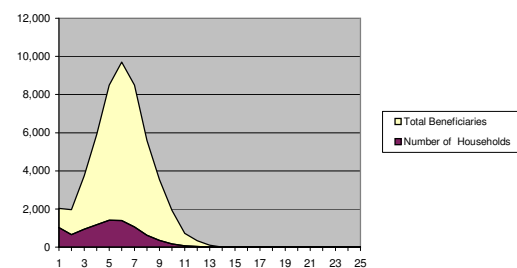


Table 4.3 - Bokolmanyo Camp Household Size		
Family Size	Number of Households	Total Beneficiaries
1	1,683	1,683
2	915	1,830
3	969	2,907
4	1,200	4,800
5	1,306	6,530
6	1,213	7,278
7	972	6,804
8	585	4,680
9	300	2,700
10	160	1,600
11	72	792
12	15	180
13	4	52
14	1	14
15		
16		
17		
18		
19		
20		
21		
22		
23		
24		
25		
Total	9,395	41,850

Figure 4.3- Bokolmanyo Camp Household Size

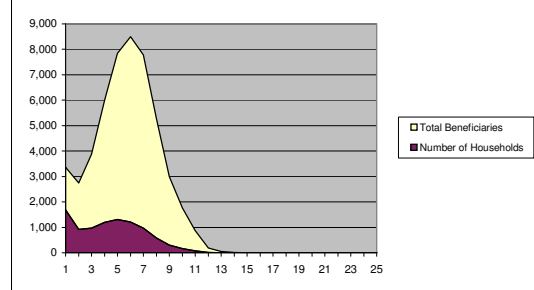


Table 4.4 - Kobe Camp Household Size		
Family Size	Number of Households	Total Beneficiaries
1	1,445	1,445
2	598	1,196
3	837	2,511
4	989	3,956
5	1,192	5,960
6	1,169	7,014
7	888	6,216
8	549	4,392
9	255	2,295
10	115	1,150
11	31	341
12	10	120
13		
14		
15		
16		
17		
18		
19		
20		
21		
22		
23		
24		
25		
Total	8,078	36,596

Figure 4.4- Kobe Camp Household Size

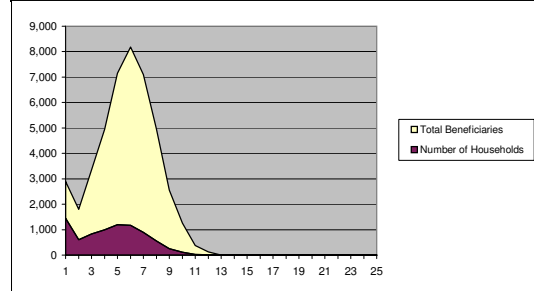


Table 4.5 - Hilaweyn Camp Household Size		
Family Size	Number of Households	Total Beneficiaries
1	1,149	1,149
2	640	1,280
3	785	2,355
4	1,078	4,312
5	1,284	6,420
6	1,245	7,470
7	890	6,230
8	563	4,504
9	259	2,331
10	111	1,110
11	27	297
12	8	96
13		
14		
15		
16		
17		
18		
19		
20		
21		
22		
23		
24		
25		
Total	8,039	37,554

Figure 4.5- Hilaweyn Camp Household Size

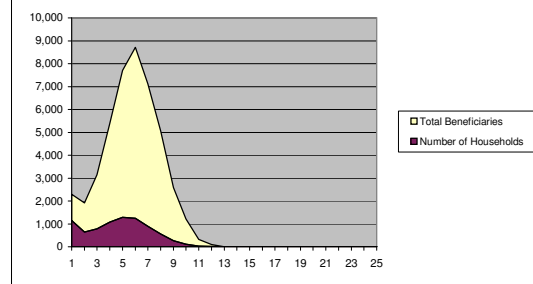
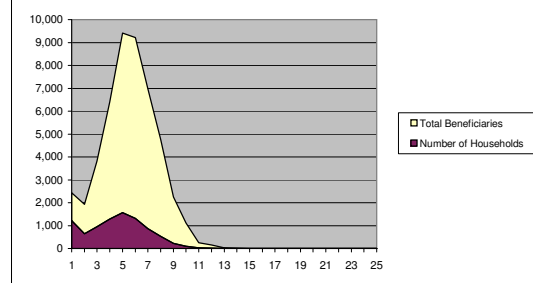


Table 4.6 - Buramino Camp Household Size		
Family Size	Number of Households	Total Beneficiaries
1	1,215	1,215
2	645	1,290
3	955	2,865
4	1,282	5,128
5	1,568	7,840
6	1,316	7,896
7	872	6,104
8	530	4,240
9	225	2,025
10	102	1,020
11	21	231
12	12	144
13	2	26
14	1	14
15		
16		
17		
18		
19		
20		
21		
22		
23		
24		
25		
Total	8,746	40,038

Figure 4.6- Buramino Camp Household Size



Specific Needs Among Camp Populations

As of 31 January 2014

Table 5.1- ALL CAMPS Specific Needs

Specific Need Type	Sex		Total
	Male	Female	
Child/adolescent at risk*	176	556	732
Woman at risk**		12,856	12,856
Serious medical Condition	1,094	1,642	2,736
Legal Protection needs	22	524	546
Single Parent	883	16,763	17,646
Persons with disabilities	1,585	1,671	3,256
Unaccompanied minor/Separated child	3,608	3,943	7,551
Older person at risk	1,271	1,935	3,206
Total ALL CAMPS	8,639	39,890	48,529

* Excludes data for Children at risk of not attending school - data pending verification

** Excludes data for lactating mothers

Figure 5.1 - ALL CAMPS Specific Needs

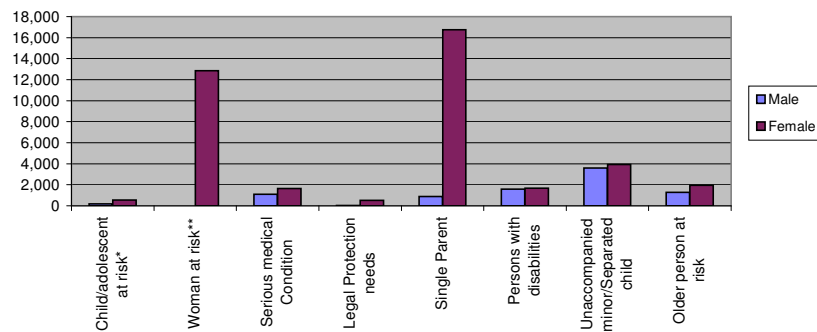


Table 5.2- Melkadida Camp Specific Needs

Specific Need Type	Sex		Total
	Male	Female	
Child/adolescent at risk*	69	177	246
Woman at risk**		4,394	4,394
Serious medical Condition	279	478	757
Legal Protection needs	11	347	358
Single Parent	213	4,218	4,431
Persons with disabilities	421	503	924
Unaccompanied minor/Separated child	1,146	1,272	2,418
Older person at risk	288	398	686
Melkadida Total	2,427	11,787	14,214

Figure 5.2 - Melkadida Camp Specific Needs

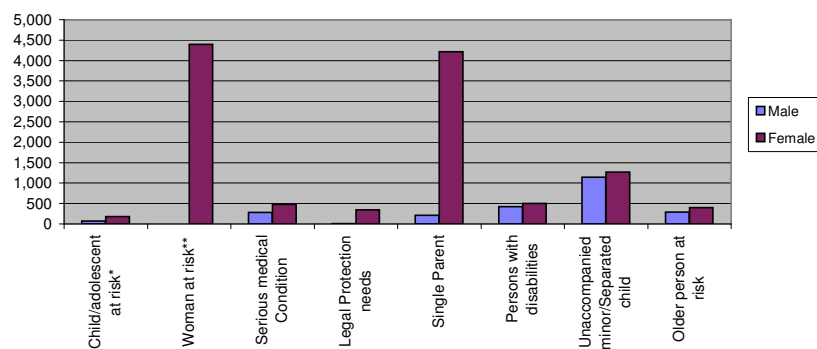


Table 5.3- Bokolmanyo Camp Specific Needs			
Specific Need Type	Sex		Total
	Male	Female	
Child/adolescent at risk*	52	134	186
Woman at risk**		4,174	4,174
Serious medical Condition	276	508	784
Legal Protection needs	9	125	134
Single Parent	203	3,742	3,945
Persons with disabilities	581	509	1,090
Unaccompanied minor/Separated child	988	1,069	2,057
Older person at risk	306	420	726
Bokomanyol Total	2,415	10,681	13,096

Figure 5.3 - Bokolmanyo Camp Specific Needs

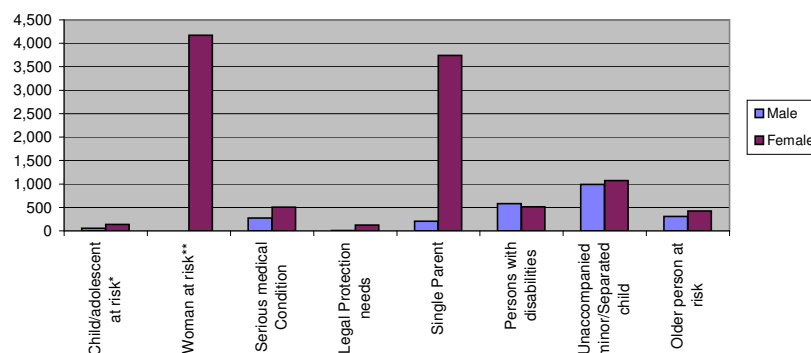
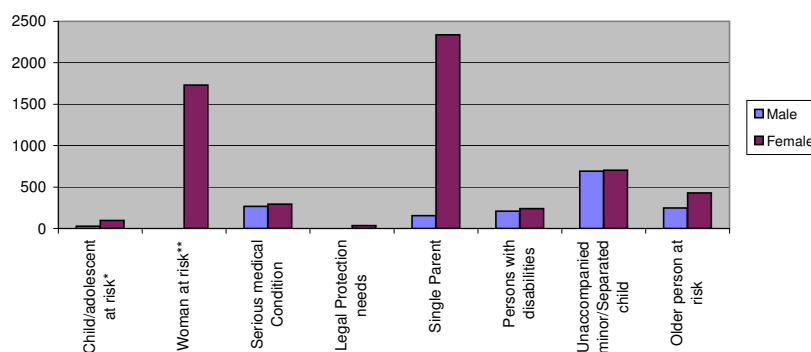


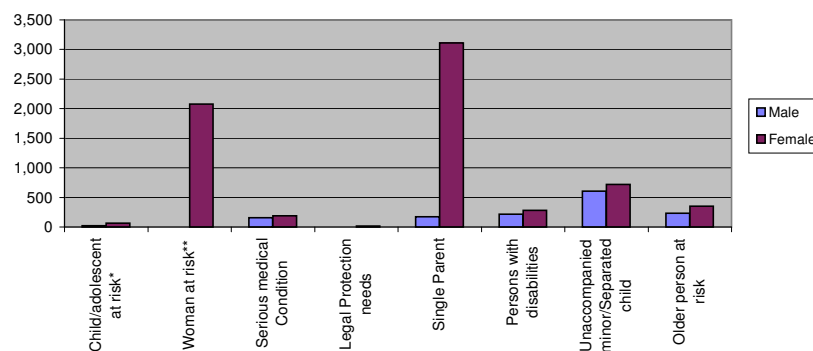
Table 5.4- Kobe Camp Specific Needs			
Specific Need Type	Sex		Total
	Male	Female	
Child/adolescent at risk*	28	97	125
Woman at risk**		1,732	1,732
Serious medical Condition	265	295	560
Legal Protection needs	1	34	35
Single Parent	156	2,339	2,495
Persons with disabilities	210	240	450
Unaccompanied minor/Separated child	692	704	1,396
Older person at risk	248	430	678
Kobe Total	1,600	5,871	7,471

Figure 5.5 - Kobe Camp Specific Needs



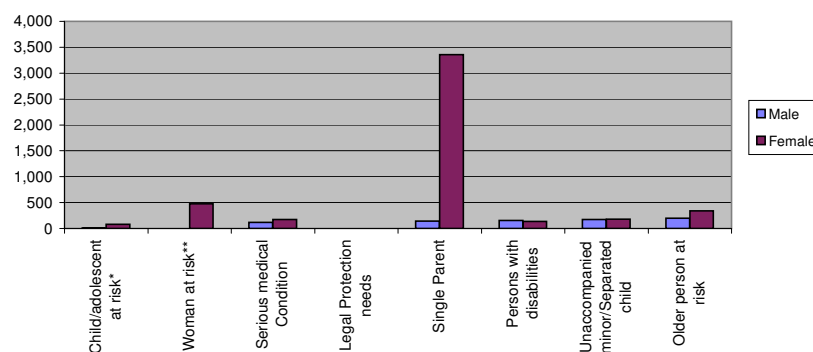
Specific Need Type	Sex		Total
	Male	Female	
Child/adolescent at risk*	23	66	89
Woman at risk**		2,077	2,077
Serious medical Condition	156	190	346
Legal Protection needs	1	16	17
Single Parent	171	3,109	3,280
Persons with disabilities	219	282	501
Unaccompanied minor/Separated child	608	718	1,326
Older person at risk	233	349	582
Hilaweyn Total	1,411	6,807	8,218

Figure 5.6 - Hilaweyn Camp Population Increase



Specific Need Type	Sex		Total
	Male	Female	
Child/adolescent at risk*	4	82	86
Woman at risk**		479	479
Serious medical Condition	118	171	289
Legal Protection needs		2	2
Single Parent	140	3,355	3,495
Persons with disabilities	154	137	291
Unaccompanied minor/Separated child	174	180	354
Older person at risk	196	338	534
Buramino Total	786	4,744	5,530

Figure 5.7 - Buramino Camp Population Increase



Places of Origin

As of 31 January 2014

Table 7.1- ALL CAMPS Places of Origin

Area of Origin	Sex		Total
	Male	Female	
Gedo	47,343	58,250	105,593
Badadir	2,779	3,334	6,113
Bay	28,191	27,898	56,089
Bakol	10,581	12,282	22,863
Lower Shabelle	401	441	842
Lower Juba	283	304	587
Galgadud	74	67	141
Middle Shabelle	80	76	156
Hiran	365	391	756
Other	3,068	3,466	6,534
ALL CAMPS Total	93,165	106,509	199,674

Figure 7.1 - ALL CAMPS Places of Origin

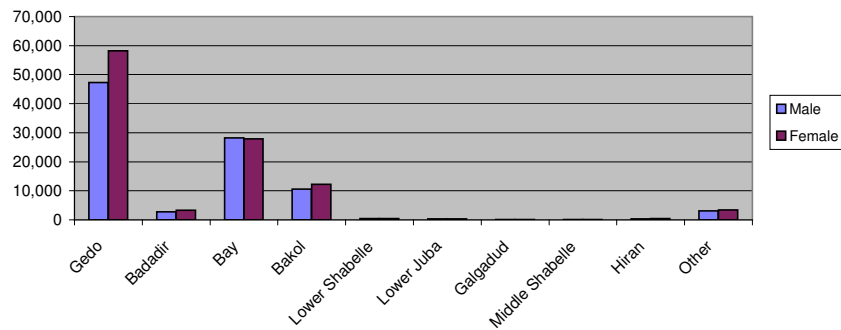


Table 7.2- Melkadida Camp Places of Origin

Area of Origin	Sex		Total
	Male	Female	
Gedo	12,788	15,679	28,467
Badadir	653	821	1,474
Bay	4,295	4,199	8,494
Bakol	1,563	1,880	3,443
Lower Shabelle	89	96	185
Lower Juba	55	52	107
Galgadud	17	21	38
Middle Shabelle	23	20	43
Hiran	84	85	169
Other	585	631	1,216
Melkadida Total	20,152	23,484	43,636

Figure 7.2 - Melkadida Camp Places of Origin

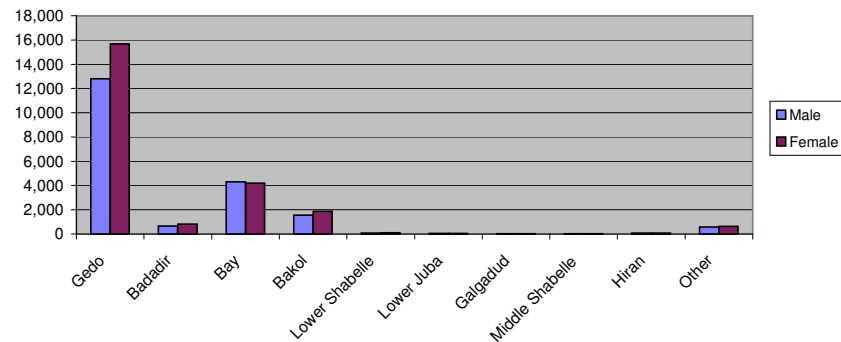


Table 7.3- Bokolmany Camp Places of Origin			
Area of Origin	Sex		Total
	Male	Female	
Gedo	10,658	12,992	23,650
Badadir	1,513	1,716	3,229
Bay	4,900	4,767	9,667
Bakol	1,378	1,470	2,848
Lower Shabelle	114	119	233
Lower Juba	137	128	265
Galgadud	33	28	61
Middle Shabelle	19	15	34
Hiran	88	93	181
Other	815	867	1,682
Bokomanyol Total	19,655	22,195	41,850

Figure 7.3 - Bokolmany Camp Places of Origin

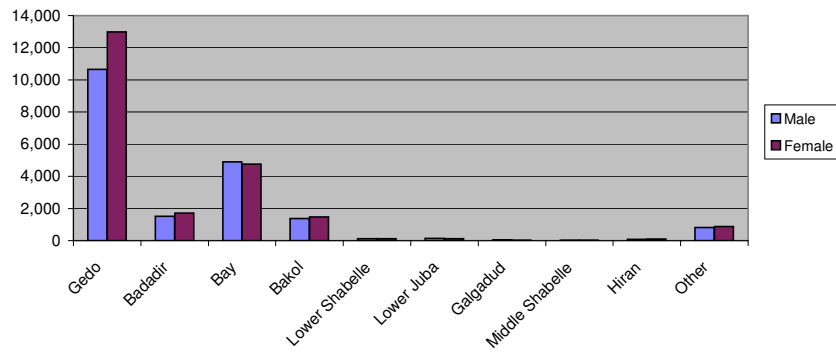


Table 7.4- Kobe Camp Places of Origin			
Area of Origin	Sex		Total
	Male	Female	
Gedo	4,952	6,076	11,028
Badadir	58	80	138
Bay	9,492	9,588	19,080
Bakol	2,217	2,480	4,697
Lower Shabelle	24	12	36
Lower Juba	25	42	67
Galgadud	7	2	9
Middle Shabelle	16	20	36
Hiran	17	20	37
Other	711	757	1,468
Kobe Total	17,519	19,077	36,596

Figure 7.5 - Kobe Camp Places of Origin

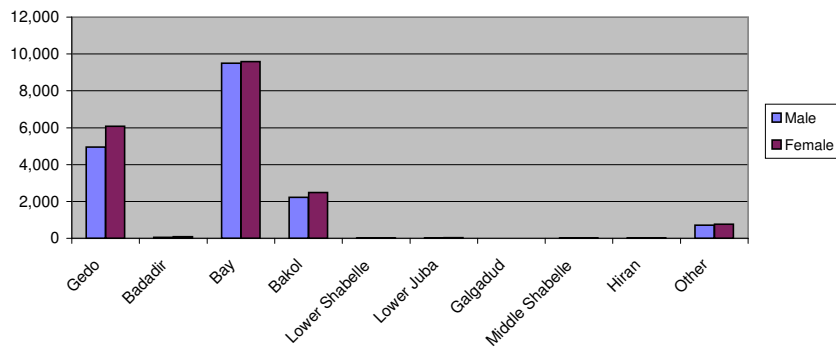


Table 7.6- Hilaweyn Camp Places of Origin			
Area of Origin	Sex		Total
	Male	Female	
Gedo	7,990	10,065	18,055
Badadir	165	226	391
Bay	5,702	5,615	11,317
Bakol	2,958	3,221	6,179
Lower Shabelle	36	28	64
Lower Juba	15	27	42
Galgadud	1	5	6
Middle Shabelle	1		1
Hiran	34	48	82
Other	624	793	1,417
Hilaweyn Total	17,526	20,028	37,554

Figure 7.6 - Hilaweyn Camp Places of Origin

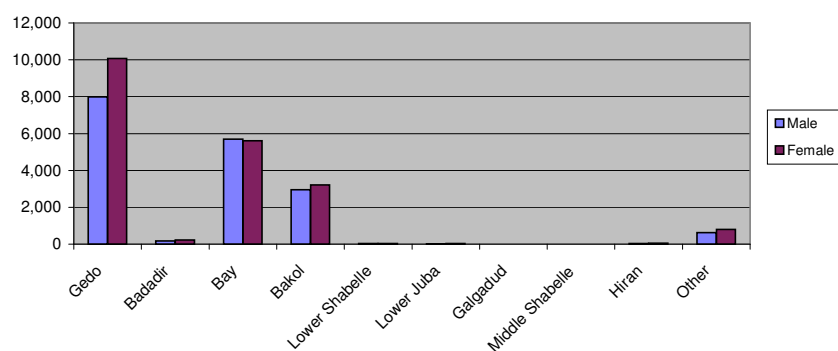
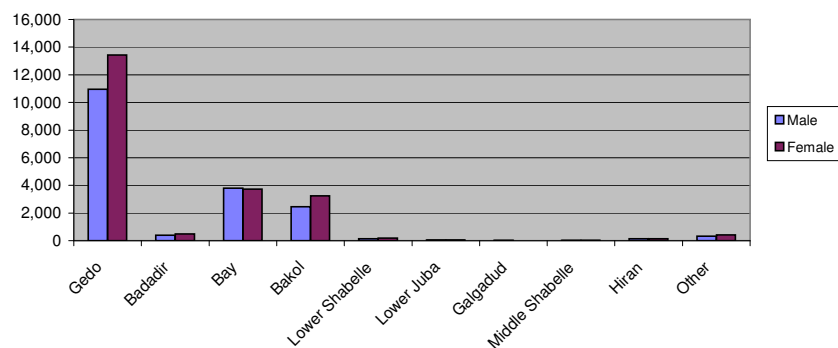


Table 7.7- Buramino Camp Places of Origin			
Area of Origin	Sex		Total
	Male	Female	
Gedo	10,955	13,438	24,393
Badadir	390	491	881
Bay	3,802	3,729	7,531
Bakol	2,465	3,231	5,696
Lower Shabelle	138	186	324
Lower Juba	51	55	106
Galgadud	16	11	27
Middle Shabelle	21	21	42
Hiran	142	145	287
Other	333	418	751
Buramino Total	18,313	21,725	40,038

Figure 7.7 - Buramino Camp Places of Origin



Ethnic Breakdown

As of 31 January 2014

Table 6.1- ALL CAMPS Ethnic Breakdown

Ethnicity	Sex		Total
	Male	Female	
Rahan-weyn	55,068	59,719	114,787
Marehan	19,015	24,125	43,140
Hawiye	7,941	9,505	17,446
Dir	2,508	3,064	5,572
Bantu	907	1,106	2,013
Ashraf	1,248	1,309	2,557
Shekal	1,181	1,416	2,597
Darod	1,440	1,611	3,051
Minorities/Others	3,857	4,654	8,511
ALL CAMPS Total	93,165	106,509	199,674

Figure 6.1 - ALL CAMPS Ethnic Breakdown

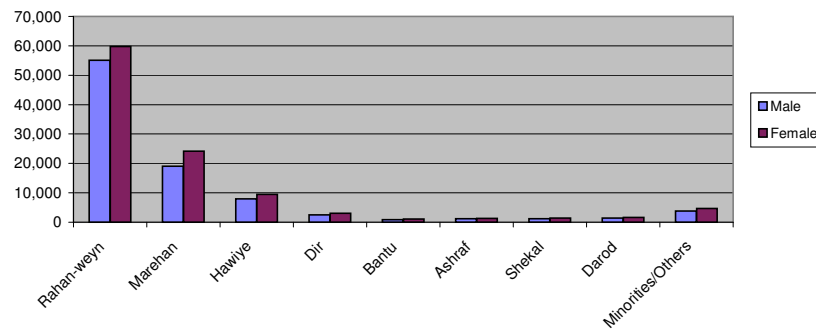


Table 6.2- Melkadida Camp Ethnic Breakdown

Ethnicity	Sex		Total
	Male	Female	
Rahan-weyn	11,757	12,761	24,518
Marehan	5,387	7,080	12,467
Hawiye	718	869	1,587
Dir	506	649	1,155
Bantu	280	310	590
Ashraf	316	309	625
Shekal	87	125	212
Darod	160	202	362
Minorities/Others	941	1,179	2,120
Melkadida Total	20,152	23,484	43,636

Figure 6.2 - Melkadida Camp Ethnic Breakdown

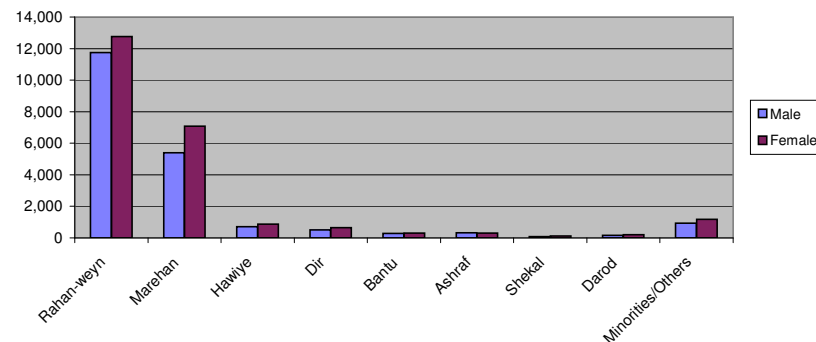


Table 6.3- Bokolmanyo Camp Ethnic Breakdown			
Ethnicity	Sex		Total
	Male	Female	
Rahan-weyn	10,056	11,018	21,074
Marehan	4,426	5,287	9,713
Hawiye	1,429	1,710	3,139
Dir	487	569	1,056
Bantu	254	323	577
Ashraf	437	474	911
Shekal	341	380	721
Darod	489	475	964
Minorities/Others	1,736	1,959	3,695
Bokomanyol Total	19,655	22,195	41,850

Figure 6.3 - Bokolmanyo Camp Ethnic Breakdown

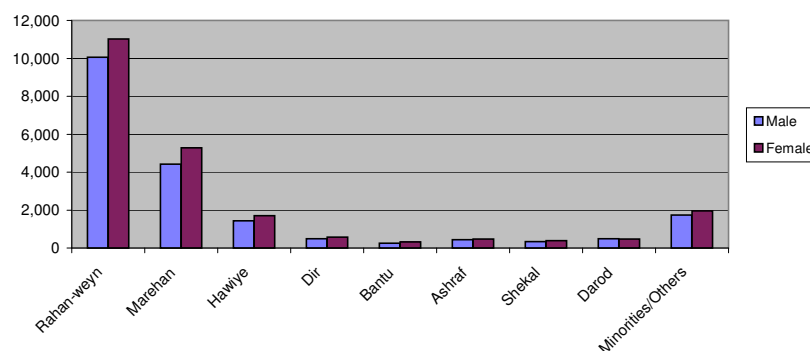


Table 6.4- Kobe Camp Ethnic Breakdown			
Ethnicity	Sex		Total
	Male	Female	
Rahan-weyn	13,572	14,185	27,757
Marehan	2,023	2,518	4,541
Hawiye	781	947	1,728
Dir	139	179	318
Bantu	76	94	170
Ashraf	60	78	138
Shekal	142	209	351
Darod	424	496	920
Minorities/Others	302	371	673
Kobe Total	17,519	19,077	36,596

Figure 6.5 - Kobe Camp Ethnic Breakdown

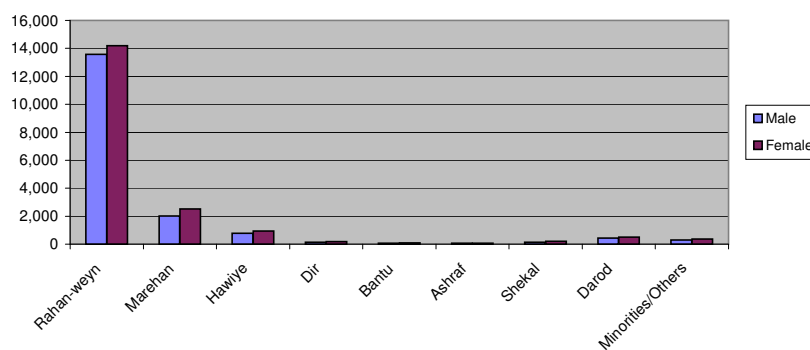


Table 6.6- Hilaweyn Camp Ethnic Breakdown			
Ethnicity	Sex		Total
	Male	Female	
Rahan-weyn	11,091	11,836	22,927
Marehan	3,562	4,583	8,145
Hawiye	1,528	1,952	3,480
Dir	391	478	869
Bantu	112	155	267
Ashraf	153	169	322
Shekal	180	211	391
Darod	196	219	415
Minorities/Others	313	425	738
Hilaweyn Total	17,526	20,028	37,554

Figure 6.6 - Hilaweyn Camp Ethnic Breakdown

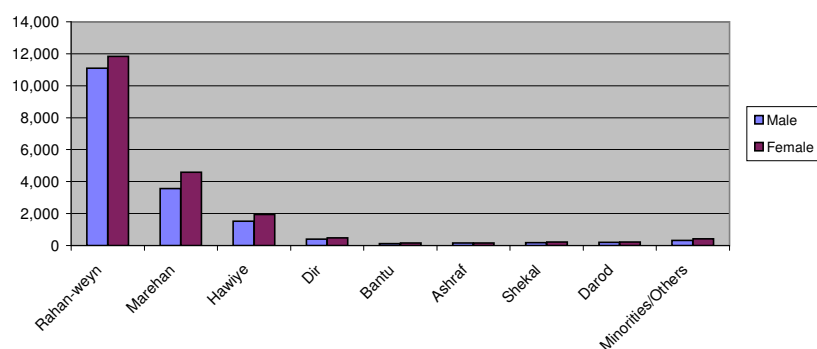


Table 6.7- Buramino Camp Ethnic Breakdown			
Ethnicity	Sex		Total
	Male	Female	
Rahan-weyn	8,592	9,919	18,511
Marehan	3,617	4,657	8,274
Hawiye	3,485	4,027	7,512
Dir	985	1,189	2,174
Bantu	185	224	409
Ashraf	282	279	561
Shekal	431	491	922
Darod	171	219	390
Minorities/Others	565	720	1,285
Buramino Total	18,313	21,725	40,038

Figure 6.7 - Buramino Camp Ethnic Breakdown

