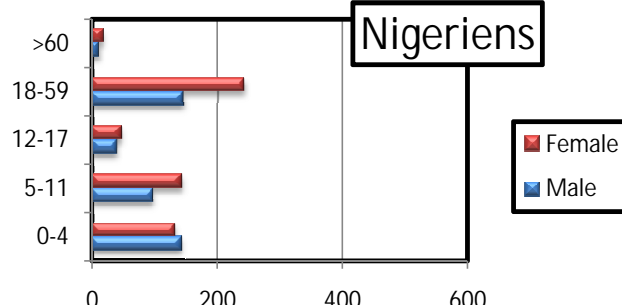
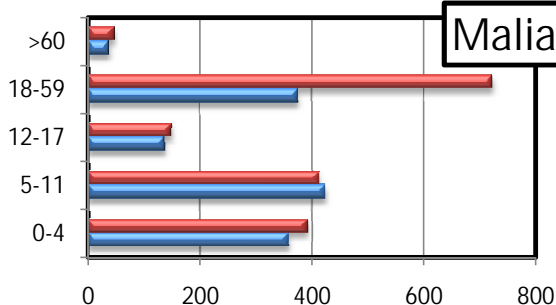


## Profile of the registered population

	Level 1 registration					un-registered				
	Malian		Nigerien		Total	Malian		Nigerien		Total
MANGAIZE	818	3049	267	1015	1085	4064				

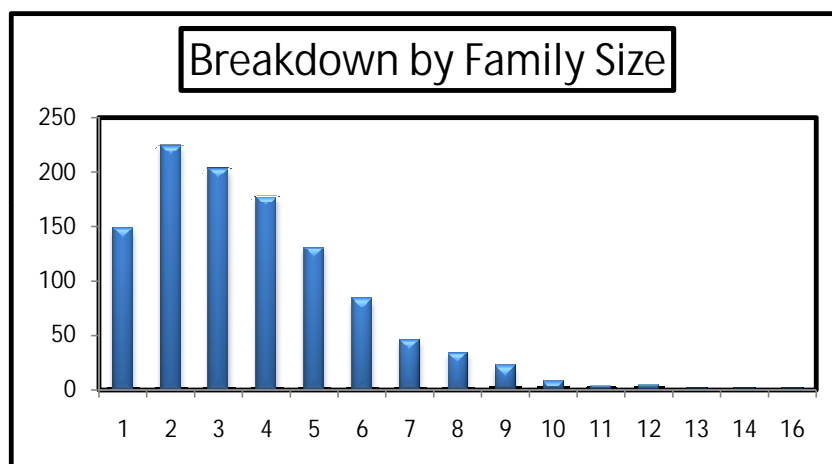
### a. Age and gender Breakdown

		Malian					Nigerien				
		0-4	5-11	12-17	18-59	>60	0-4	5-11	12-17	18-59	>60
MANGAIZE	Male	358	423	136	375	37	141	97	40	145	11
	Female	391	413	148	723	45	132	142	47	243	17
	Total	749	836	284	1098	82	273	239	87	388	28



### b. By family size

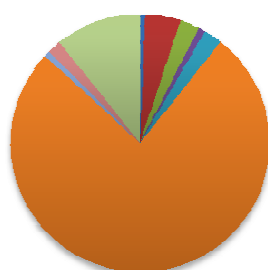
Size	Total HH	
1	148	14%
2	224	21%
3	203	19%
4	177	16%
5	130	12%
6	83	8%
7	45	4%
8	34	3%
9	21	2%
10	8	1%
11	4	0%
12	5	0%
13	1	0%
14	1	0%
16	1	0%
Grand Total	1085	100%



### b. By Place of habitual residence

	Malian HH		Nigerien HH		Grand Total	
DELIMANE	5	1%	13	5%	18	2%
FOUKORATAN	36	4%	43	16%	79	7%
GANGALA	20	2%		0%	20	2%
IDELMA	7	1%		0%	7	1%
JANGALA	19	2%	1	0%	20	2%
MENAKA	623	76%	163	61%	786	72%
TABOUKAR	6	1%	3	1%	9	1%
TINABAW	14	2%	1	0%	15	1%
OTHERS	88	11%	43	16%	131	12%
Grand Total	818	100%	267	100%	1085	100%

**Malian HH**



**Nigerien HH**

