

SYRIA REGIONAL REFUGEE RESPONSE

Jordan, Lebanon, Iraq, Turkey

Monday 1 October 2012



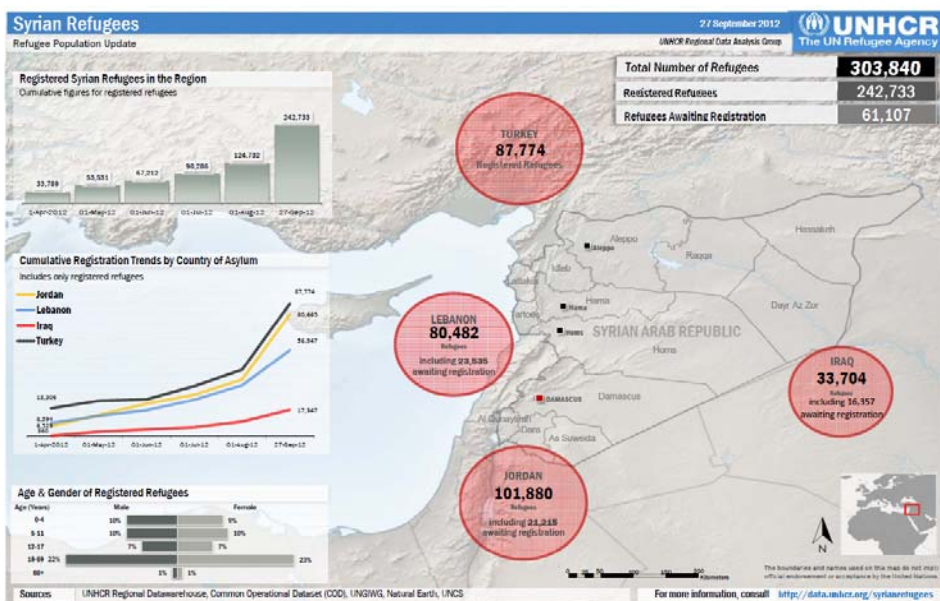
This weekly update provides a snapshot of the response of the United Nations and its partners to the influx of Syrian refugees into Jordan, Lebanon, Iraq and Turkey. The response is led by the UN Refugee Agency (UNHCR) and is undertaken in full coordination with host Governments, UN agencies, and NGO partners.

This report covers the period from 24 to 30 September 2012.

Highlights

Second Revision of the Regional Response Plan for Syrian Refugees

- On Thursday 27 September, UNHCR, UNICEF, WFP and Save the Children launched the second revision of the Regional Response Plan for Syrian Refugees in Geneva. The revised plan brings together the coordinated efforts of 10 UN agencies and 42 national and international partners and is urgently seeking for US\$ 487.9 million to assist Syrian refugees hosted by Jordan, Turkey, Lebanon and Iraq. Based on recent trends, the plan estimates there could be up to 710,000 refugees in need of assistance in the region by the end of the year, the majority women and children. The response plan was revised not only due to the massive increase in refugee numbers, but also because of the start of the school year, the onset of winter and the opening of several new camps. For now, the revised Syria Regional Response Plan has received 29% of its financial requirements (see details on page 5). The full document can be found online at: <http://data.unhcr.org/>



New Syrian refugee arrivals in September

- September has seen the arrival of over 65,000 Syrian refugees in Jordan, Turkey, Lebanon and Iraq.

Syrian refugees beyond Jordan, Lebanon, Iraq and Turkey

- Recent reports show that Syrians fleeing their country have gone as far as North Africa and Europe (including in Armenia, Georgia, Greece and Cyprus). To date, UNHCR offices in Morocco, Tunisia, Libya and Egypt have registered around 6,000 Syrians, although rough government estimates indicate there are many more.

Refugees receiving assistance as of 27 September 2012

Syrian refugees	Jordan*	Lebanon	Iraq	Turkey**	Total
Registered	80,665	56,947	17,347	87,774	242,733
Awaiting registration	21,215	23,535	16,357	-	61,733
Total	101,880	80,482	33,704	87,774	303,840

* According to the Government of Jordan, there are currently more than 200,000 Syrians in Jordan.

** These figures correspond to the number of Syrians registered and assisted in camps only. Since 2011, the Government of Turkey has assisted over 120,000 Syrians.

Jordan

In spite of a recent drop in arrivals largely attributable to fighting taking place close to the border, over 1,400 refugees were able to cross into Jordan in the nights of Wednesday and Thursday last week.

Last week also, refugees in Za'atri organized protests against their stay in the camp, causing some material damage. UNHCR and the Jordanian authorities are looking at ways to address refugee frustration and preventing further incidents.

Registration and Protection

- A significant increase was recorded this week in the numbers approaching UNHCR's Amman office and the Info Desks across Jordan for registration appointments, with over 22,000 individuals awaiting registration. This can be explained by the fact that Syrians wish to facilitate the enrollment of their children in Jordanian schools thanks to their registration with UNHCR and also due to refugees' diminishing resources.
- 53% of registered refugees are under the age of 18, and a third of households are made up of single women or are female-headed.

Za'atri Refugee Camp

- Following an assessment of winterization needs in the camp, efforts are underway to ensure refugees do not suffer from the drop in temperatures which has already begun to be felt at night. Plans include the distribution of a kerosene heater, as well as a new non-food item package. UNHCR and the Jordanian Health Aid Society (JHAS) are distributing two blankets to each new arrival.
- The Refugee Camp Committee has held elections to choose its representatives. UNHCR and Intersos are also supporting the camp population in organizing its Women's Refugee Committee.

Host Community Assistance

- The majority (77%) of refugees contacting UNHCR's information help desk in Amman last week were Syrian, most expressing their fear of being evicted from their accommodation. Over 500 Syrian families (1,914 individuals) were identified as vulnerable based upon interviews and will therefore receive the visit of UNHCR and International Relief and Development (IRD) at home to assess whether they are eligible for financial assistance.
- Winterization efforts are also underway in urban communities hosting refugees and will include a "winterization bonus" for those receiving monthly cash assistance, as well as urgent one-time cash assistance to allow refugees to cover the extra expenses related to heating. In addition, clothing and basic needs vouchers will be distributed to the most vulnerable Syrians.
- CARE International started receiving referrals from UNHCR for Syrians in Mafraq and Amman needing one-time urgent cash assistance. The project will benefit 800 families, including 200 vulnerable Jordanian families who will be identified by CARE. Single individuals will receive: JD 75 (US\$ 105), while families made up of two to four individuals will receive JD 120. Larger families of more than five members will receive JD 150.

Fatima is the fourth Syrian baby to be born in the UAE hospital set up in Mafraq to provide medical assistance to Syrian refugees ©UNHCR 2012/M. Fawe



Lebanon

The Lebanese Government has issued an order preventing the forcible return of Syrian to their country.

This month, the Danish Refugee Council (DRC), UNICEF, World Vision (WV), Caritas Migrant Centre and WFP distributed assistance in the form of food vouchers, food kits and hygiene and baby kits to over 40,000 Syrian refugees (8,000 families).

WFP has extended the food voucher system to include Syrians settled in Tripoli.

Protection

- In September, UNHCR registered 14,000 Syrian refugees bringing the total number of Syrians registered and seeking registration to 80,482 individuals. 78% are women and children.
- Access to Lebanon for Syrians remains dangerous and some villages which host refugees close to the border (Wadi Khaled and Akkar) are shelled regularly.
- On average the Tripoli registration centre (Northern Lebanon) sees 450 Syrians a day; and the mobile registration unit in the Bekaa Valeey sees 300-370 Syrians a day. A new mobile registration unit will shortly be deployed to southern Lebanon (Saida) to reach out to an estimated 10,000 refugees in that area.
- Over 70 percent of registered refugees crossed officially into Lebanon. Thanks to a recent decision of the authorities they are now able to renew their permits within Lebanon, without having to return to Syria. Given the high cost (\$200) of such renewals, however, UNHCR is seeking to obtain the waiver of this fee for Syrian refugees. For those Syrians who do not cross officially, movement inside Lebanon is difficult, which is why UNHCR is advocating for the regularization of registered refugees who have entered through unofficial border points.

Assistance

- Thanks to a new inter-agency system, every registered refugee receives a text message or call informing them of the time and place of the next round of distribution of food and non-food items (NFIs) coordinated by DRC, UNICEF, World Vision, Caritas and WFP. DRC, Caritas and WFP also support those who have just arrived or are not registered.

Education

- The new school year started on Monday 24 September and refugee enrollment is still taking place. There are currently more than 3,000 refugee students enrolled in schools, assisted by UNHCR, UNICEF and Save the Children International (SCI).
- Efforts continue to increase school capacity and encourage refugee parents to enroll their children, including by providing transportation to neighboring villages should the capacity of local schools be filled as well as potentially offering double shifts in over crowded schools. Humanitarian agencies consider there is a risk some refugee children may be working to earn money instead of attending school which is why UNHCR and partners engaged in information campaigns throughout the summer to raise awareness about the importance of registering children in schools.
- UNHCR and DRC have opened their first community centre within the Ministry of Social Affairs' Social Development Centre (SDC) in Amayer, Wadi Khaled. Partner agencies including SCI, UNICEF, and International Medical Corps (IMC) will be providing vocational classes.

Health

- Finding a solution to the pending issue of secondary health care coverage remains a top priority. The newly revised regional refugee response plan is appealing for fresh funding, part of which –if received – should go towards covering the gaps in secondary healthcare. In the Bekaa, Dar al Fatwa notified hospitals that they will no longer be contributing to the 15% share of the fees, which is normally paid by the patient. UNHCR and IMC are reaching out to other local NGOs to help relieve the burden on beneficiaries.

Shelter and Water, Sanitation and Hygiene (WASH)

- Due to the growing number of refugees and the approaching winter season, shelter continues to pose one of the biggest challenges to humanitarian agencies. This month, UNHCR, DRC, the Norwegian Refugee Council (NRC) and other partners were successful in providing shelter solutions to over 800 people (160 families) living in active schools in the North and the Bekaa. Together with local actors, these agencies are working to identify adequate rental options, vacant buildings to renovate, as well as prefabricated dwellings to host single families. UNHCR and its partners are advocating for the necessary government authorization to move ahead with these projects.

Iraq

Although the border crossing of Al-Qa'im remains open, some restrictions have been imposed. Families with children under 15, women, elderly, sick and injured persons are allowed to enter at a rate of 120 a day.

Iraq now hosts 33,704 Syrian refugees, including over 28,000 in the Kurdistan Region.

Syrian refugees arriving in Al-Qa'im camp which hosts 5,500 individuals
©UNHCR 2012



Protection

- Last week saw the arrival of 3,405 refugees to the Kurdistan Region (KR), coming mainly from Hasskah, Aleppo as well as from Damascus.
- Registration has begun in the camp of Al-Qa'im, meanwhile an additional registration centre is being opened in the KR in order to speed up registration and reduce waiting periods for Syrian refugees.

Shelter, Water and Assistance

- In Al-Qaim, the majority of refugees have been moved out of public buildings to the camp. There are now only 463 refugees left in two schools and one health centre who will shortly be transferred to the camp with the support of the Iraqi Ministry of Displacement and Migration. The Iraqi authorities, UNHCR and its partners have put in place the necessary coordination mechanisms to organize the humanitarian response within the camp and UNICEF is ensuring that camp residents have access to safe drinking water.
- Domiz camp now hosts over 10,000 refugees in 2,300 tents for families and single individuals. Construction is underway to increase shelter space for new arrivals. As of 1 October, the distribution of hot meals by the KR's Department of Displacement and Migration will be discontinued to allow refugees to cook for themselves using the cooking sets and stoves provided by UNHCR and IOM.

Education and Health

- The Department of Health reports that 80 to 100 Syrians a day receive medical attention in the camp of Domiz.
- The new camp school is due to open its doors on 1 October in Domiz.

Turkey

According to the latest update from the Government, there are currently 84,774 Syrian refugees registered and assisted in camps along the border with Syria.

Turkey has opened a new camp bringing the total number of operational camps to 13 in seven provinces. Another three camps are currently under construction.

- The authorities have announced that 14,000 were still waiting to be admitted into Turkey at the borders of Kilis and Hatay and are being admitted in small groups.
- Despite some voluntary returns to Syria, the total number of Syrians accommodated in camps in Turkey increased by 13% during the month of September 2012.
- Owing to some shortage of space in Akcakale camp and continuing arrivals, some new refugees are being registered in the camp and then accommodated in villages whenever they are found to have relatives already settled there.

Playground for Syrian children in a refugee camp in Turkey ©UNHCR 2012



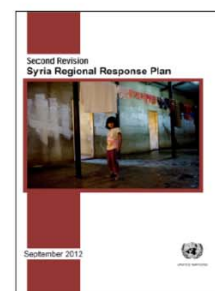
For any queries, please contact:

Carole Lalève, UNHCR Geneva, laleve@unhcr.org or Eveline Wolfcarius, UNHCR Geneva, wolfcari@unhcr.org.

Revised Syria Regional Response Plan
Funding status as of 25 September 2012

The requirements presented in this funding update refer to the Revised Syria Regional Response Plan (September 2012), which presents requirements from March to December 2012.

Funding level	
Revised RRP Requirements	\$487,983,480
Funding received as of 15 August	\$141,570,542
% funded	29%



Organization	Total requirements	Funding received						% funded
		Jordan	Lebanon	Turkey	Iraq	Regional funding	Total received	
Multi-country - appealing organizations								
ACTED	\$1,175,000	\$648,971	\$0				\$648,971	55%
Danish Refugee Council (DRC)	\$4,130,000		\$1,191,000				\$1,191,000	29%
Handicap International (HI)	\$2,804,000		\$1,190,610				\$1,190,610	42%
International Medical Corps (IMC)	\$1,968,500	\$420,000	\$1,700,000				\$2,120,000	108%
International Orthodox Christian Charities (IOCC)	\$1,245,000		\$100,000				\$100,000	8%
International Rescue Committee (IRC)	\$2,781,922	\$2,025,271					\$2,025,271	73%
IOM	\$9,267,595	\$140,520	\$300,000	\$962,240	\$12,500		\$1,415,260	15%
Médecins du Monde (MDM)	\$1,384,494	\$509,494	\$875,440				\$1,384,934	100%
Mercy Corps	\$4,014,500	\$155,000	\$240,000				\$395,000	10%
Norwegian Refugee Council (NRC)	\$4,540,000		\$6,308,650				\$6,308,650	139%
Save the Children International	\$7,707,000	\$1,115,191					\$1,115,191	14%
UNESCO	\$1,800,000	\$71,500	\$0				\$71,500	4%
UNFPA	\$6,412,132	\$200,401	\$381,562	\$0			\$581,963	9%
UNHCR	\$245,690,387	\$21,310,017	\$8,523,161	\$10,971,584	\$0	\$39,264,694	\$80,069,456	33%
UNICEF	\$79,047,833	\$5,363,466	\$1,699,589	\$406,061	\$0	\$1,368,277	\$8,837,393	11%
WFP	\$71,157,708	\$5,905,006	\$3,596,237	\$5,266,658	\$1,359,801		\$16,127,702	23%
WHO	\$5,600,000	\$288,900	\$149,800	\$0	\$0		\$438,700	8%
TOTAL	\$450,726,071	\$38,153,737	\$26,256,049	\$17,606,543	\$1,372,301		\$40,632,971	28%
Jordan only - appealing organizations								
Association of Volunteers in International Service (AVSI)	\$240,000		\$0				\$0	0%
ARDD-Legal Aid	\$30,000		\$0				\$0	0%
Care International	\$900,000	\$913,826					\$913,826	102%
Caritas	\$1,500,000	\$2,100,000					\$2,100,000	140%
Center for Victims of Torture (CVT)	\$550,000		\$0				\$0	0%
International Catholic Migration Commission (ICMC)	\$850,000	\$637,238					\$637,238	75%
Internews	\$245,000							
Intersos	\$780,799							
International Relief and Development (IRD)	\$975,000		\$0				\$0	0%
Islamic Relief Worldwide (IRW)	\$771,469		\$0				\$0	0%
JEN	\$20,000		\$0				\$0	0%
Jordan Hashemite Charity Organization (JHCO)	\$7,562,059	\$2,463,651					\$2,463,651	33%
Jordan Health Aid Society (JHAS)	\$1,900,000		\$0				\$0	0%
Lutheran World Federation (LWF)	\$900,500							
Madrasati Initiative	\$783,607							
Relief International (RI)	\$400,000		\$0				\$0	0%
Save the Children Jordan	\$353,000							
THW	\$4,550,000	\$4,550,000					\$4,550,000	100%
Un Ponte Per (UPP)	\$650,000	\$237,619					\$237,619	37%
UN Women	\$97,175							
Jordan Subtotal	\$24,058,609	\$10,902,334					\$10,902,334	45%
Lebanon only - appealing organizations								
Action Contre la Faim (ACF)	\$1,100,000		\$400,000				\$400,000	36%
ANERA	\$370,000		\$0				\$0	0%
Caritas Lebanon Migrant Center (CLMC)	\$2,725,300		\$2,286,811				\$2,286,811	84%
Comitato Internazionale per lo Sviluppo dei Popoli (CISP/RI)	\$2,025,000							
GVC/Muslim Aid	\$1,650,000		\$799,000				\$799,000	48%
MPDL	\$340,000		\$0				\$0	0%
Première Urgence (PU)	\$650,000		\$1,842,500				\$1,842,500	283%
PCPM	\$340,000		\$295,000				\$295,000	87%
Restart	\$103,000							
Terre des Hommes	\$150,000		\$329,112				\$329,112	219%
UNDP	\$1,000,000		\$50,000				\$50,000	5%
War Child Holland	\$734,000		\$259,184				\$259,184	35%
World Vision international	\$1,856,000		\$385,000				\$385,000	21%
Lebanon Subtotal	\$13,043,300		\$6,646,607				\$6,646,607	51%
Iraq only - appealing organizations								
People in Need	\$55,500				\$0		\$0	0%
UNHABITAT	\$100,000				\$0		\$0	0%
Iraq Subtotal	\$155,500				\$0		\$0	0%
Grand Total	\$487,983,480						\$141,570,542	29%

A red box indicates that the funding level is not currently available.

Please note that some NGOs listed above received funding via partner agreements with UN organizations and are operational on the ground. In order not to double count funding, this income is only counted once under the original receiving agency.

DONORS



Funding also received from ERF, OCHA and PRIVATE DONORS

Agencies participating in the Regional Response Plan are asked to update the funding they have received once a month.

For regular updates on the Regional Refugee Response, please check the following web portal: <http://data.unhcr.org/syrianrefugees>