

# INTER-AGENCY REGIONAL RESPONSE FOR SYRIAN REFUGEES

Egypt, Iraq, Jordan, Lebanon, Turkey

16 - 22 May 2013



This update provides a snapshot of the inter-agency regional humanitarian response in full coordination with host Governments and 65 partners across the region. Published weekly on Thursday, the next update will be available on 30 May 2013.

## REGIONAL HIGHLIGHTS

- There are now close to 500,000 Syrian refugees in Lebanon and Jordan. An average of 8,000 Syrians are crossing into Egypt, Iraq, Jordan, Lebanon and Turkey every day, putting intense pressure on these countries politically, socially and economically.
- UNHCR reports that refugee arrivals to Jordan have slowed over the last few days but cannot confirm the reason. Fewer than 30 refugees arrived over the first half of this week, compared to the usual 1,000 to 2,000 a day. UNHCR is monitoring the situation.
- Inter-agency partners are reviewing the planning figures and funding requirements for the Regional Response Plan until December 2013. According to the humanitarian planning some 3.5 million people may seek asylum in the neighbouring countries by December.
- UNFPA and UNHCR co-led an inter-agency SGBV workshop to identify programming and advocacy priorities, and define contextually-appropriate interventions across the region, in order to develop action plans in coordination with Governments and other partners.
- Some 20 INGOs working in more than one country to respond to the Syria crisis have come together to create a Syria Emergency INGO Regional Forum. The Forum, which will focus primarily on advocacy and work closely with existing country forums as well as NGO consortia.

## IN THIS ISSUE

- Cash assistance scaled up to promote self-reliance, p.2
- Learning interventions to ensure basic education, p.2
- Improving child protection referral mechanisms, p.3
- Immediate assistance for identified cases of child labour, p.3
- ACTED: new child and youth friendly spaces in Iraq, p.3
- Strengthening SGBV prevention and response in Domiz camp, Iraq, p.4
- UNRWA assists 59,000 Palestine refugees, p.4

## REGIONAL FIGURES

**1,557,134** refugees fleeing Syria have sought protection in neighbouring countries

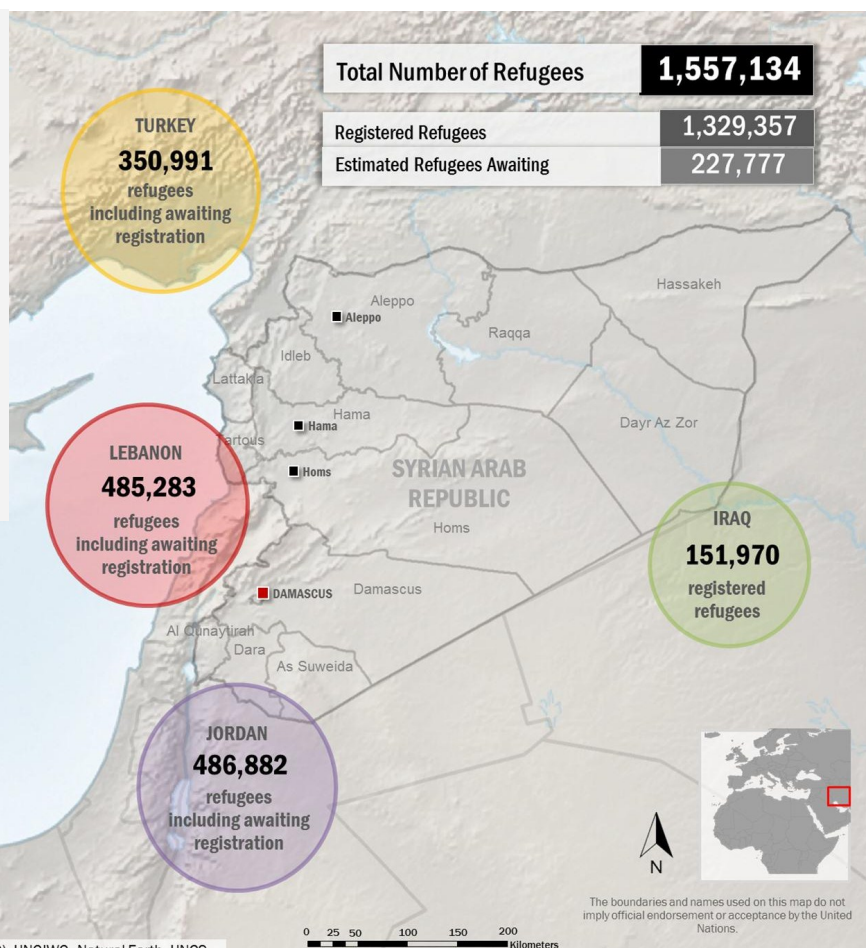
**140%** of the refugee population planning figure for June 2013 reached

**805,000** children affected

**11%** increase in the population of Lebanon and

**8%** increase in Jordan as a result of the refugee influx

**76%** of registered refugees live outside camps in host communities



Sources UNHCR Regional Datawarehouse, Common Operational Dataset (COD), UNGIWG, Natural Earth, UNCS

Refugee population as of 22 May 2013, based on available data. For updated figures, please visit <http://data.unhcr.org/syrianrefugees>

## Cash assistance programmes scaled up to promote self-reliance

- Refugees will face increasing difficulties to make ends meet with existing savings and, barring wider access to the labour market, any income they may generate. New arrivals may have more urgent needs as the situation deteriorates further in Syria.
- Financial assistance has been consistently flagged as a critical need and top priority for non-camp refugees to meet the growing costs of living, ensure protection and prevent families from slipping into destitution.
- Iraq - UNHCR launched a cash assistance pilot project targeting some 700 extremely vulnerable Syrian refugee families living in urban communities in the Kurdistan Region (KR). UNHCR and partners are verifying vulnerabilities through a house-to-house visit. Issues such as education, livelihood prospects and medical needs are also being assessed through the home visits. Cash assistance will be distributed to extremely vulnerable families based on a calculation of US\$ 200 for the head of household and US\$ 25 for each additional family member, up to a ceiling of US\$ 425. The pilot project is implemented by UNHCR through its partner Qandil and with the assistance of Harikar in Dohuk and CDO in Sulaymaniyah.
- Lebanon - Oxfam GB is distributing cash for rent to 250 families (1500 people). The total cumulative number of families who have benefited from financial assistance is now 535 (3,210 people).
- Jordan - cash assistance for Syrian refugees in urban areas began in March 2012. Over 14,000 families have been identified as vulnerable and eligible for cash assistance. In April, 916,830 JOD (approx. US\$1.3 million) was dispersed to 10,415 families (40,000 individuals). UNHCR's target is to reach 12,000 vulnerable families (60,000 beneficiaries) by year-end.
- Egypt – RESALA, Caritas and Islamic Relief Worldwide continue to identify vulnerable cases and provided financial assistance to some 1,000 families.

## Learning interventions to ensure access to basic education

- Lebanon - With the number of Syrian refugees approaching half a million, the public education system is under considerable strain to absorb an estimated 160,000 school-aged children (5-17 years) and support them to continue their formal education.
- Humanitarian response partners are working to address low enrolment and retention rates of refugees in schools to ensure that children are not missing out on basic education, limiting future perspectives and increasing their exposure to protection risks.
- Remedial classes are provided for children already enrolled in school to assist those who missed out on long periods of schooling to catch up to their peers. In addition, Accelerated Learning Programmes provides learning support to out of school children to help them be in a position to enrol in school next academic year.
- Over the week, more than 6,000 children benefit from learning support programmes sponsored by UNHCR, Amel Association, Caritas Lebanon Migrant Centre, The Norwegian Refugee Council, Save the Children, Terre Des Hommes and War Child Holland. An additional 5,400 children at risk of dropping out of school attended remedial classes and received psychosocial support as part of a UNICEF effort to reduce the school dropout rate.
- Other interventions to promote access to and quality of education being implemented include community outreach to enrol children, back-to-school grants and supplies, school rehabilitation and teacher training. Partners are also supporting public schools to institute second shifts to double their capacity in regions where refugees are concentrated.



*Syrian refugee students in a Baalbeck school, Bekaa Valley, Lebanon. UNICEF | F. Juez*



## Improving referral mechanisms to enhance child protection measures

- Jordan - To continue to support and increase the capacity of Ministry of Education (MoE) school teachers and counsellors to provide psychosocial and child protection support for all vulnerable children in school, UNICEF is supporting the MoE in the development of a referral system and pathway within the Ministry.

This system will enable school counsellors to effectively refer children in need of protection services and specialized psychosocial support. In this



*UNHCR and partners have organized activities for Syrian refugee children in the Bekaa Valley, Lebanon.*  
UNHCR | S. Malkawi

respect, UNICEF has participated in a technical meeting attended by members of the established Referral System Technical Committee. At this stage, the Committee is looking at existing referral pathways of partners including that of the MoE and the identification of possible linkages.

- Iraq - UNICEF in close collaboration with UNHCR and Child Protection partners is developing a universal referral flowchart, case management and joint database with the other partners to avoid duplications and ensure proper services are being provided. Social workers from the Child Protection Unit conducted two awareness sessions for children and their parents on violence against children, which remains the major child protection concern in the camp.

## Immediate assistance provided to identified child labour cases

- Lebanon - During the past week, agencies identified 15 cases of boys between the ages of 12-15 who are working up to 11 hours per day seven days a week. Most of these children –all of whom attended school back in Syria- are working as cleaners in restaurants and receive substandard monthly wages. Their families reported that the income they generate helps them cover the families' monthly expenses. The families were immediately referred for rent support, while their cases will be followed closely to ensure that parents are properly counselled on the need to enrol their children in schools or remedial classes.

## ACTED: New child and youth friendly spaces for young Domiz camp residents

- Iraq - ACTED recently opened new Child and Youth Friendly Spaces in the Domiz camp, offering the only two places where kids between the ages 5 to 15 can engage in supervised recreational and therapeutic activities. Organized activities include crafts, sports and social skills on how to cope in a camp where there is little privacy, and space needs to be shared with people they hardly know.
- The Spaces will benefit 400 children in 2 shifts, similar to the school day, to allow them to join activities while they are not at school. Fourteen volunteers have already been recruited to work with the children, most of them from among the Syrian refugees.
- ACTED will also soon open a Child Protection Unit that employs socialized staff to manage cases of violence or child labor by coordinating with the other humanitarian actors across the camp.

## Strengthening SGBV prevention and response at Domiz camp

- Iraq - Sexual and gender-based violence (SGBV) prevention and support mechanisms in Domiz have been in place since the early stages of the camp's development. These mechanisms were consolidated at the first SGBV sub-working group meeting on 8 May. The meeting was attended by various organizations including the Department for Combating Violence against Women (DVAW).
- Given the importance of addressing SGBV, the sub-working group was established to support existing psychosocial and legal support, which includes the listening centre and the women's safe place; to improve SGBV identification and referral mechanisms; and, to strengthen the working relationship with the DVAW. The next key undertaking will be the mapping of SGBV activities in the camp with the support and collaboration of IRC and UNFPA. The sub-working group will be co-chaired by UNHCR and UNFPA.

## UNRWA responding to urgent needs of 59,000 Palestine refugees

- Lebanon - There are now approx. 53,200 Palestine refugees from Syria (PRS) in Lebanon, with nearly half the population located in the southern towns of Saida and Tyr. UNRWA has actively been working on responding to much needed shelter rehabilitation for PRS and 87 families are currently being provided with adequate housing. Six additional shelter rehabilitation requests have been approved, which will provide housing for a further 60 families. UNRWA is also in the process of distributing UNICEF-funded vouchers valued at 50,000 LL (approximately US\$ 33) to each child enrolled in an UNRWA school, allowing more than 3,300 children and their parents to purchase clothing.



*Palestine refugee children in Cyber City, Jordan. UNRWA | A. Ghosheh*

- Jordan - Some 6,000 Palestine refugees from Syria have entered Jordan. UNRWA is providing health care through UNRWA clinics and education for over 600 students.

Thank you to the following donors for contributing to the Syria Regional Response Plan 2013, as of 22 May:

AGFund | Australia | Belgium | Canada | CERF | China | Czech Republic | Denmark | ERF | Estonia | European Union | Finland | France | Germany | Hungary | Iceland | Ireland | Italy | Japan | Republic of Korea | Kuwait | Lithuania | Luxembourg | Malta | Netherlands | Norway | Private Donors | Spain | Sweden | Switzerland | United Kingdom | United States of America |

The regional response for refugees fleeing Syria is the coordinated effort of 65 participating agencies:

ACF | ACTED | AMEL | Arab Council Supporting Fair Trial and Human Rights | ARRD-Legal Aid | Association of Volunteers International | CARE International | CARITAS | Caritas Lebanon Migrant Centre | Centre for Victims of Torture | CHF International | CISP/RI | Coptic Evangelical Organization for Social Services | DRC | FCA/ACT Alliance | GVC/Muslim Aid | HAI | Handicap International | ICMC | IMC | IOM | International Orthodox Christian Charities | IRD | IRC | Internews | Intersos | Islamic Relief Worldwide | JEN | JHCO | JHAS | JRF | Madrasati Initiative | Medair | Médecins du Monde | Mercy Corps | Movement for Peace | NRC | Oxfam GB | People in Need | PU-AMI | Psychosocial Training Institute in Cairo | Questscope | Relief International | Restart | Save the Children Jordan | Save the Children International | Saudi National Campaign | ShelterBox | Terres des Hommes | THW | UAE Red Crescent | Un ponte Per | UNDP | UNESCO | UNFPA | UNHABITAT | UNHCR | UNICEF | UNOPS | UNRWA | UNWOMEN | War Child Holland | WFP | WHO | World Vision International

Humanitarian response partners are invited to contribute to this report. For more information or to be added to the distribution list, please contact [Anna King](mailto:kinga@unhcr.org), UNHCR Regional Reporting Officer | [kinga@unhcr.org](mailto:kinga@unhcr.org)