

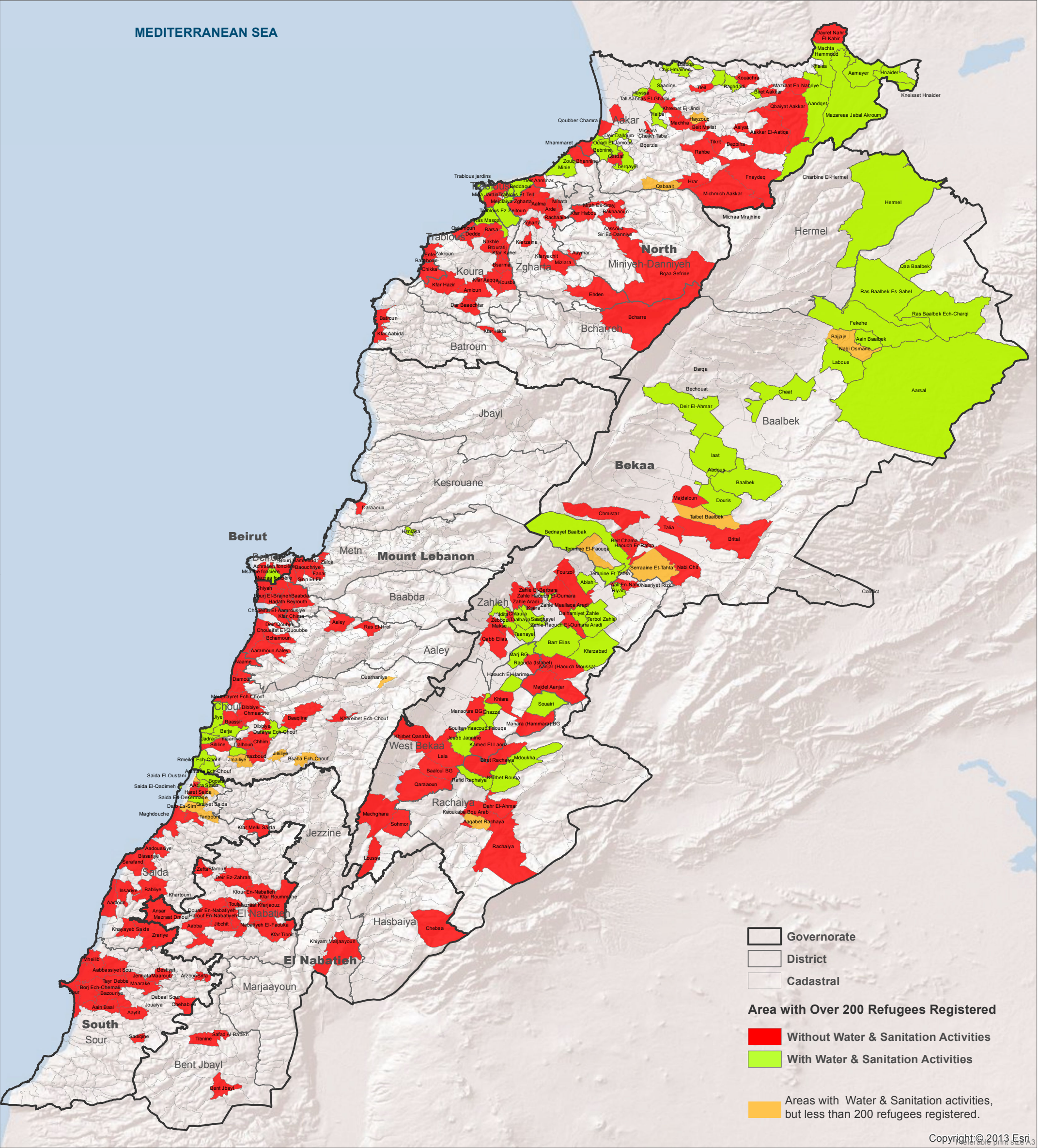
SYRIA REFUGEE RESPONSE

WASH Sector Working Group

Implementation of Water and Sanitation Activities

From January to May 2013

Lebanon



UNHCR Pankaj Kumar Singh, singhpa@unhcr.org;
UNICEF David Adams, dadams@unicef.org.
Data Collection Focal Point:
UNICEF Fredrick Hanga, fhanga@unicef.org.

GIS and Mapping by UNHCR.
For more information and updates contact:
Wali Ahadi, ahadi@unhcr.org, or
Rodolphe Ghossoub, ghossoub@unhcr.org



The boundaries, names, and designations used on this map do not imply official endorsement of the United Nations or UNHCR. All data used were the best available at the time of map production.

Data Sources:
- UNHCR: Registered refugee location as of 10 June 2013.

- The WASH Sector Data is based on the 5W Matrix collected by the WASH sector group