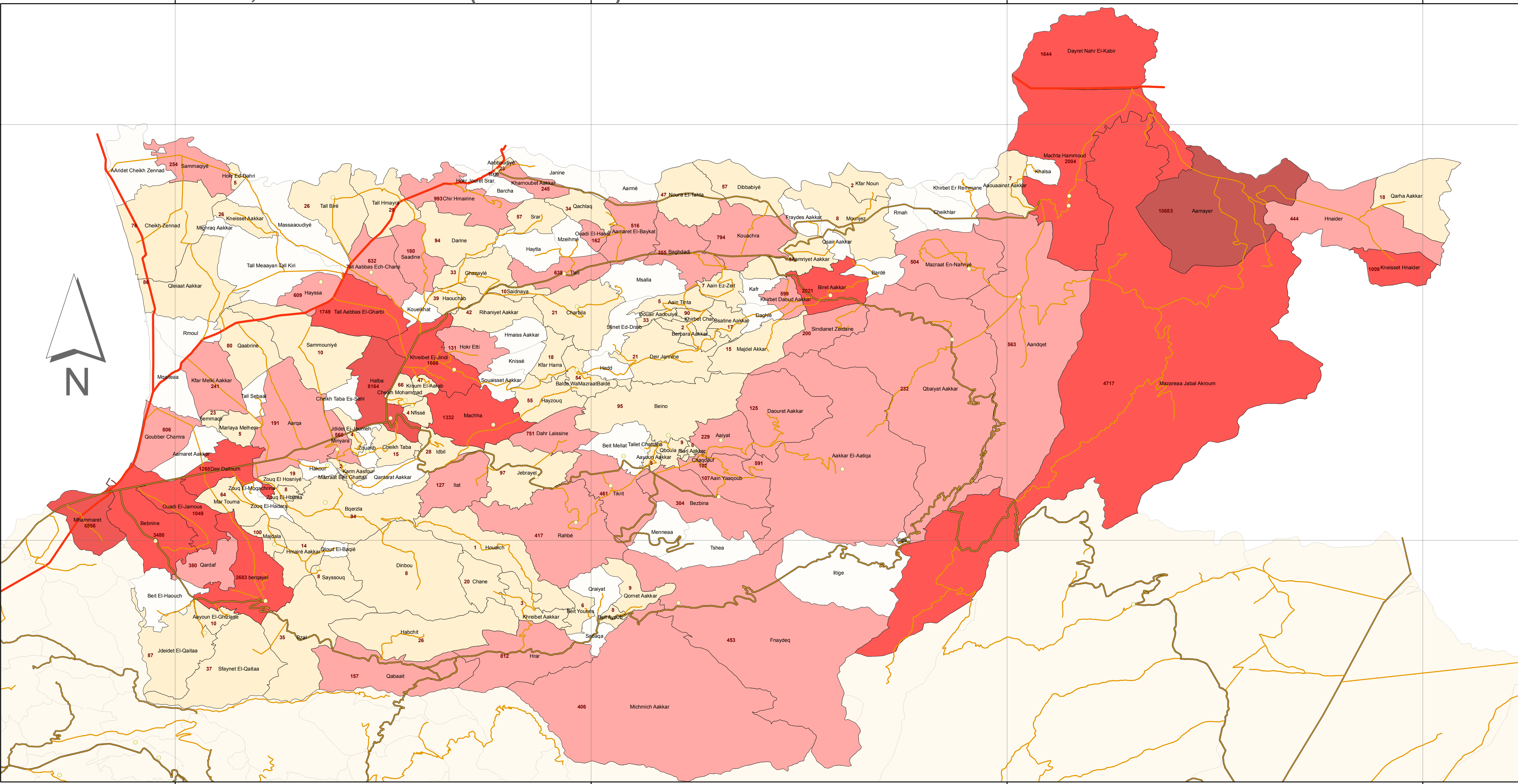


# SYRIA REFUGEE RESPONSE

## LEBANON. DISTRIBUTION OF THE REGISTERED SYRIAN REFUGEES AT THE CADASTRAL LEVEL

### NORTH LEBANON, AKKAR CAZA (DISTRICT). JULY 2013



**Legend**

Number of Registered Refugees at the Cadastral Level

- 0
- 1 - 100
- 101 - 1000
- 1001 - 5000
- 5001 - 10000
- 10001 - 11000

The No. indicates the registered refugees at the cadastral level

- Main Towns
- International Road
- Local Road
- Primary Road
- Cadastral Boundary

**Notes**

The boundaries, names and designations used on this map do not imply official endorsement of the United Nations. All data used are the best available at the time of map production.

Data Sources:

- Lebanese Border, Cadastral Boundaries, Major Cities/Towns, Roads: NPMP LT 2005.
- Geographic Projection WGS 1984

Registered Refugees Figures by UNHCR as of 11 July 2013.

For more information contact Salam Shahin, shahin@unhcr.org

GIS and Mapping by UNHCR. For Information and updates contact Rodolphe Ghossoub: ghossoub@unhcr.org

NPMP LT: National Physical Master Plan for the Lebanese Territory

Key Map

