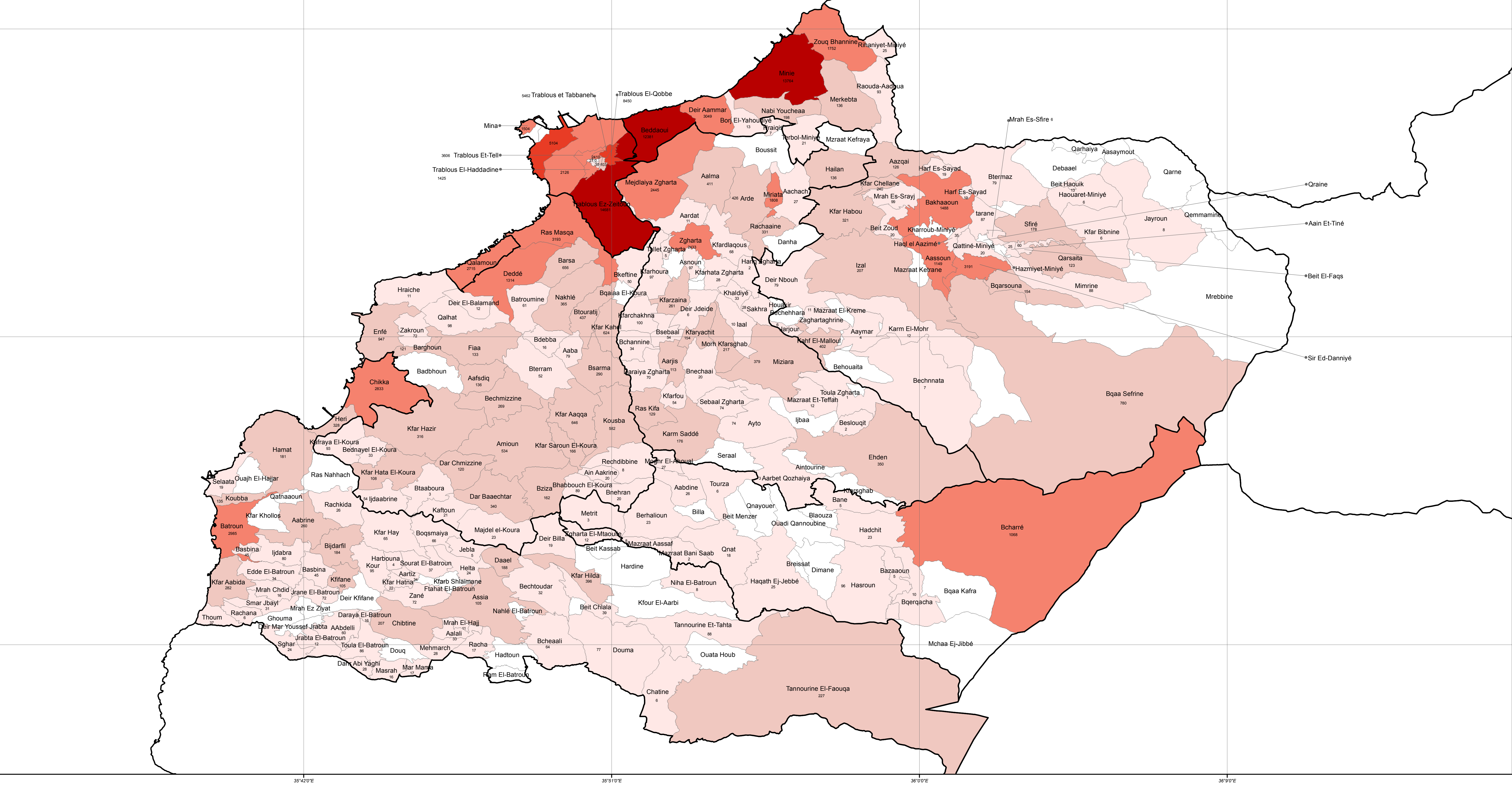


SYRIA REFUGEE RESPONSE

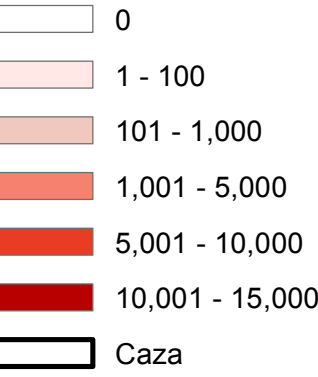
LEBANON North Governorate, Tripoli, Bathroun, Bcharreh, El Koura, El Minieh-Dennieh, Zgharta Districts

Distribution of the Registered Syrian Refugees at the Cadastral Level

As of 29 August, 2013



Number of Registered Refugees per Cadastral



The No. indicates the registered refugees at the cadastral level

Notes

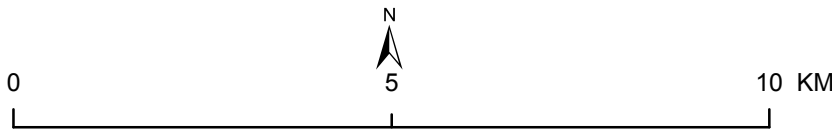
The boundaries, names and designations used on this map do not imply official endorsement of the United Nations. All data used are the best available at the time of map production.

Data Sources:
- Lebanese Border, Cadastral Boundaries and Caza: NPMLT 2005.
- Geographic Projection WGS 1984

Registered Refugees Figures by UNHCR as of 29 August 2013.
For more information contact Rana G. Ksafi at ksafi@unhcr.org

GIS and Mapping by UNHCR. For Information and updates contact Wali Ahadi at ahedi@unhcr.org

NPMLT: National Physical Master Plan for the Lebanese Territory



LOCATION DIAGRAM

