

Key Findings of REACH Camp Sweep Assessment in Za'atari

19th November 2013

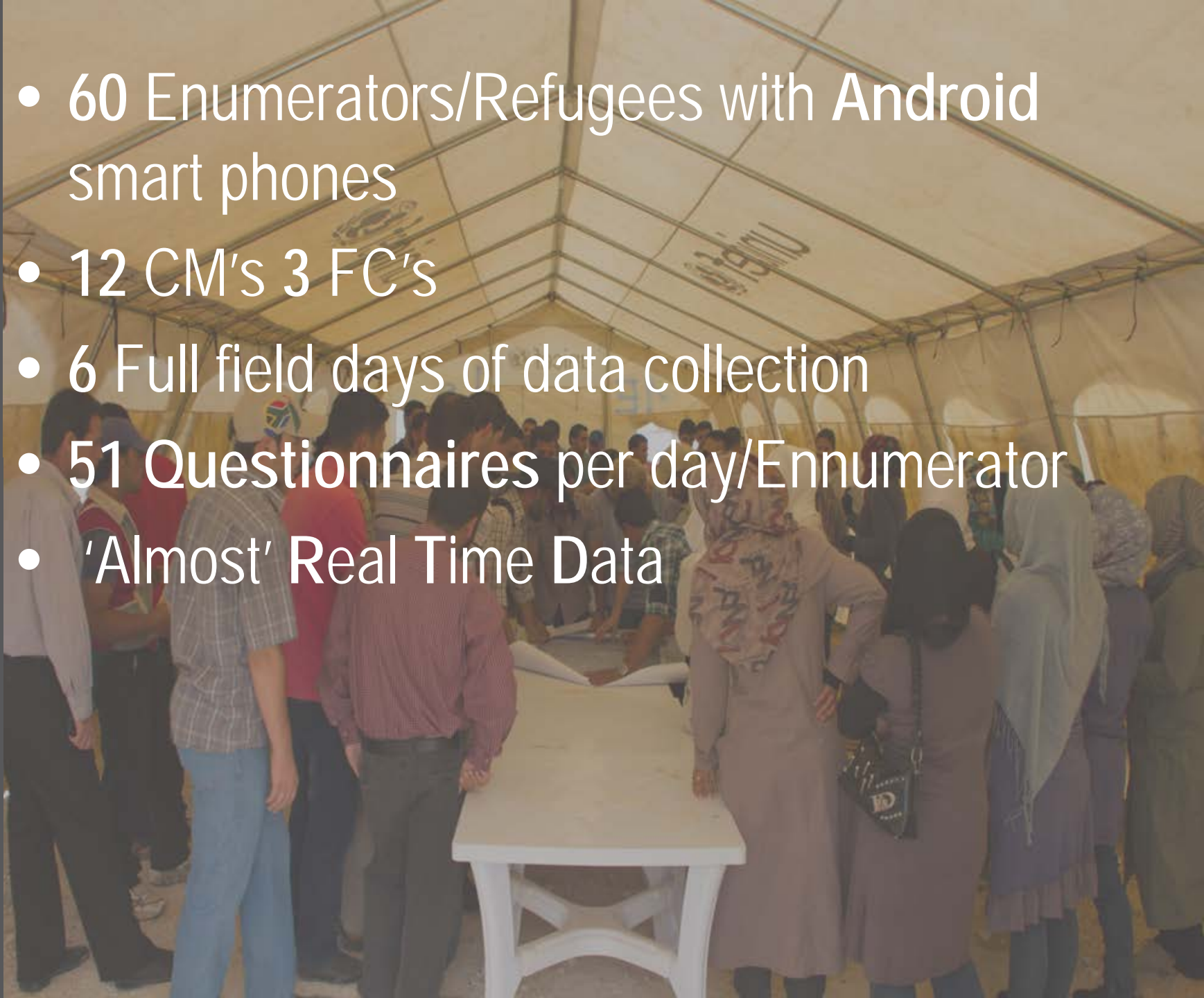
Introduction

From 6th October to 20th October (pre/post Eid), REACH conducted an assessment of every Household to support UNHCR's Winterization and Shelter strategy planning in Za'atari

Key Questions regarding:

- Tents/Caravans
- Family Composition
- Winterisation (i.e. How to warm water for washing, where the household cooks)
- Quantities of current cooking/heating stoves
- Time of Arrival
- Electricity Connections
- Access to Mass Media
- WASH

- 60 Enumerators/Refugees with **Android** smart phones
- 12 CM's 3 FC's
- 6 Full field days of data collection
- 51 Questionnaires per day/Enumerator
- 'Almost' Real Time Data



Using the Real Time data to keep track of the assessment



REACH An initiative of
ACTED - UNOSAT
IMPACT Initiatives

Assessment Duration: 6 Days

In partnership with:  **UNHCR**
The UN Refugee Agency

Table of Key Findings

Districts	Individuals	Households	Families	% of Individuals per District	% of Households per District	% of Families per District	Number of Tents	Number of Caravans
District 1	7,485	1,161	1,631	10%	9%	10%	421	2,156
District 2	8,242	1,305	1,783	11%	10%	11%	465	2,213
District 3	5,864	1,157	1,360	8%	9%	8%	838	961
District 4	4,895	981	1,133	7%	7%	7%	861	653
District 5	5,849	1,101	1,232	8%	8%	8%	827	823
District 6	5,083	935	1,069	7%	7%	7%	409	1,096
District 7	5,471	1,076	1,123	7%	8%	7%	527	1,069
District 8	1,991	368	417	3%	3%	3%	192	376
District 9	5,282	964	1,146	7%	7%	7%	549	1,121
District 10	6,740	1,340	1,416	9%	10%	9%	721	1,533
District 11	10,025	1,784	2,159	13%	13%	13%	1,166	1,874
District 12	7,520	1,180	1,641	10%	9%	10%	846	1,657
<i>Camp Total</i>	<i>74,447</i>	<i>13,352</i>	<i>16,110</i>				<i>7,822</i>	<i>15,532</i>

Camp Population of **74,447** people
13,352 Households
16,110 Families
7,822 Tents
15,532 Caravans

Average Family Size **4.6**
Average House hold size **5.58**

District 11 is the most heavily populated district

Change from May 2013

Districts	Individuals	Households	Families	Number of Tents	Number of Caravans
District 1	66%	73%	67%	55%	90%
District 2	67%	82%	70%	118%	85%
District 3	60%	68%	63%	41%	375%
District 4	55%	66%	58%	49%	246%
District 5	63%	75%	65%	76%	89%
District 6	77%	94%	78%	132%	85%
District 7	63%	78%	64%	149%	70%
District 8	50%	61%	51%	116%	51%
District 9	66%	77%	67%	79%	89%
District 10	63%	83%	64%	70%	99%
District 11	67%	77%	69%	61%	121%
District 12	73%	79%	75%	81%	96%
<i>Camp Total</i>	65%	76%	67%	68%	97%

The Camp is **65%** of the population that is was 5 months ago

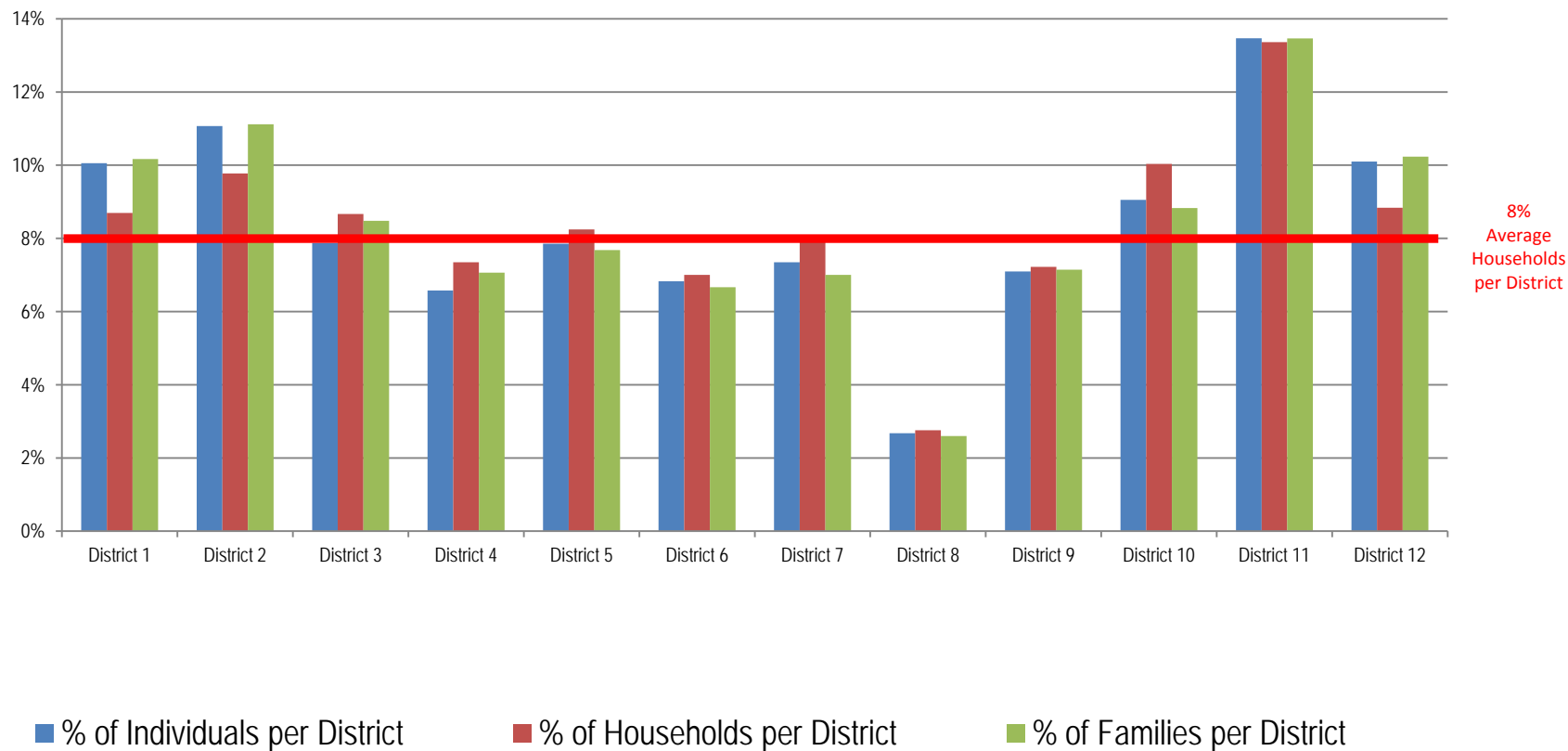
District 8 has seen the largest reductions in people....reason, lack of services?

In partnership with:

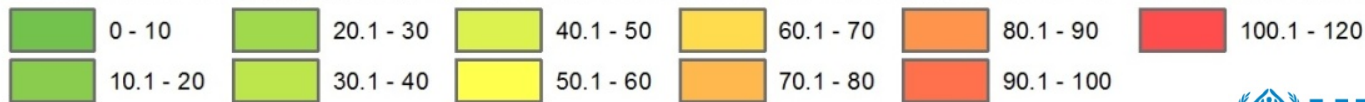
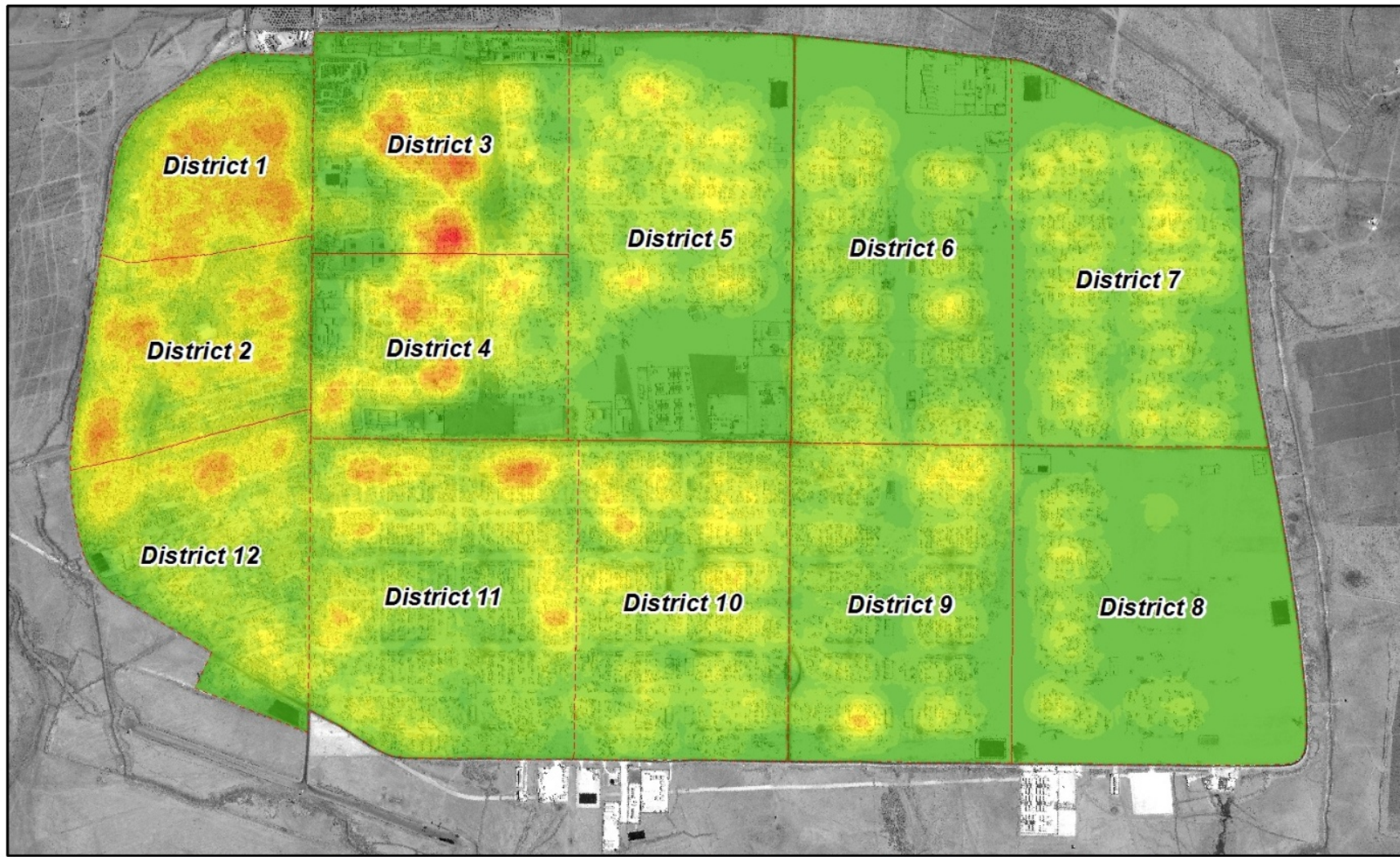
SHELTER

An aerial satellite image showing a large, rectangular, light-colored area, possibly a refugee camp or shelter, surrounded by darker, textured terrain. The area is divided into several smaller sections by thin lines, and there are some small, dark structures visible within it. The overall image is in grayscale.

Percentage of Individual, Family and Household distribution per District

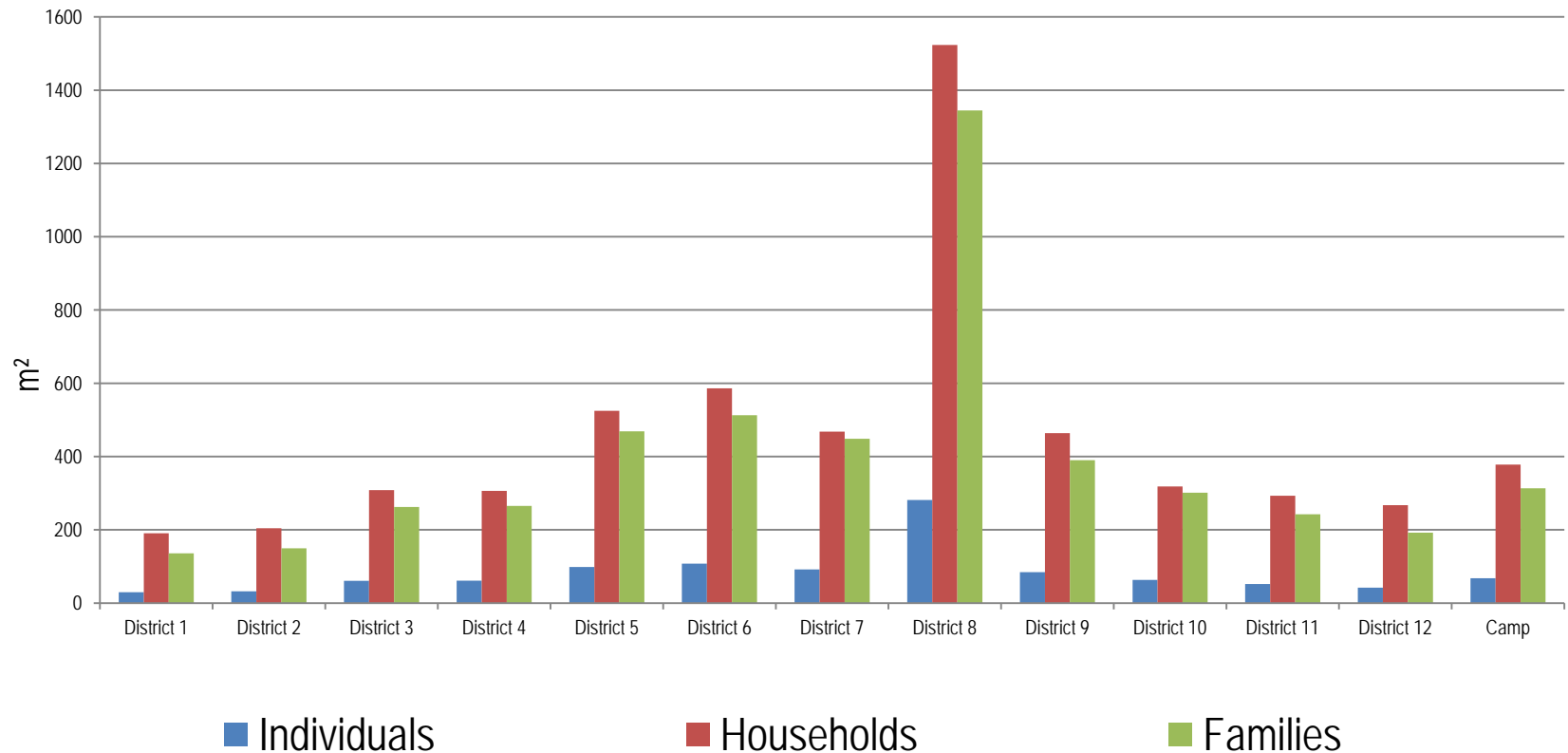


Household Density per Hectare



In partnership with:

Open Space (m²) per Household Composition

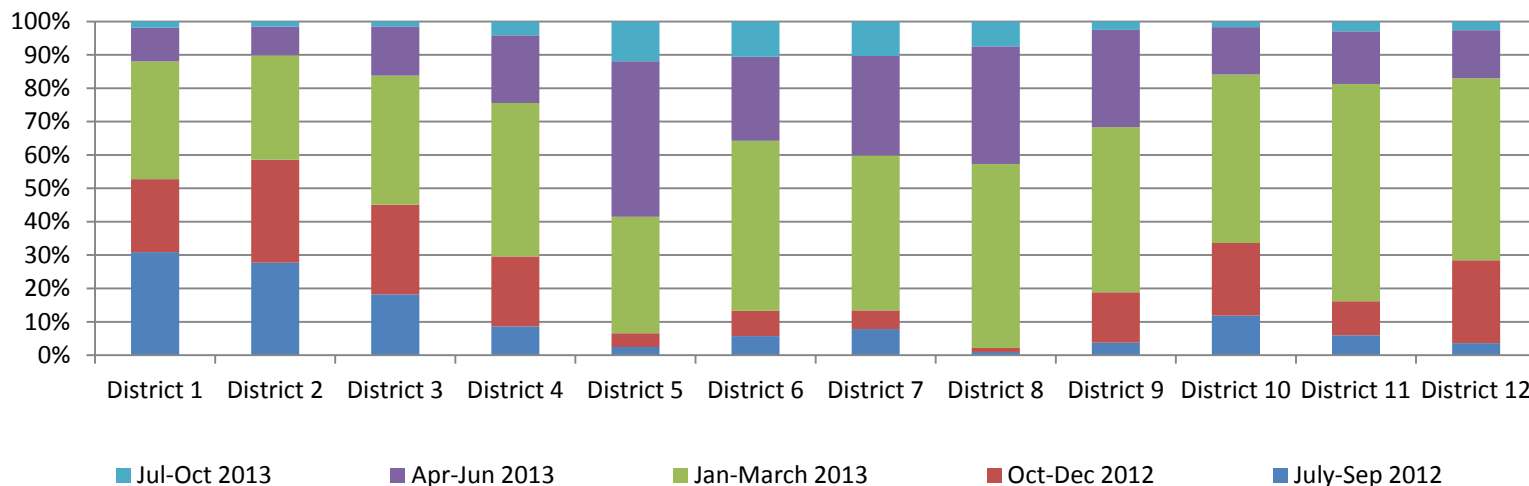
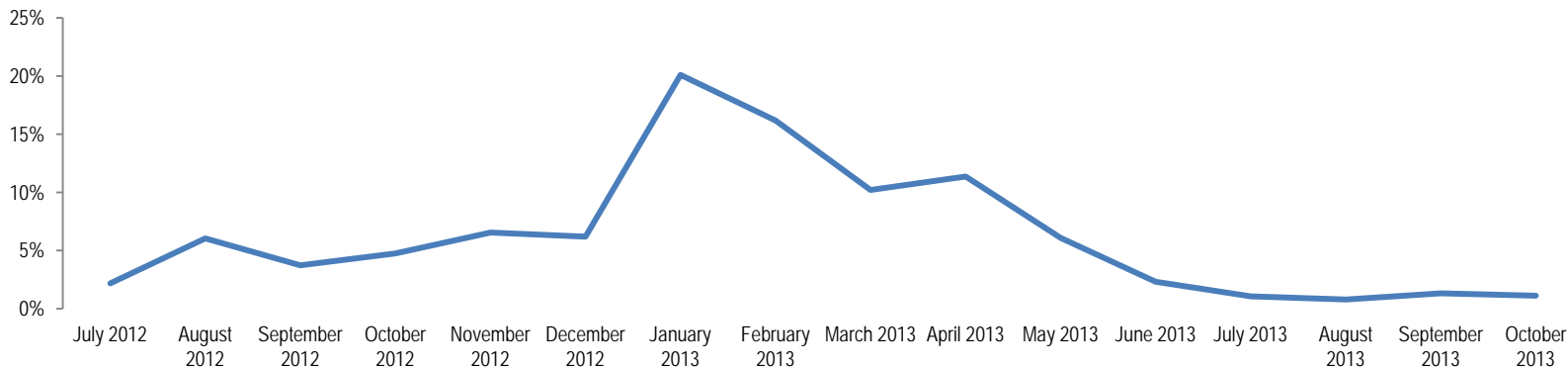


The current Camp standard for open space = 45m² per person

Districts **1,2** and **12** now fall below the UNHCR standard for the recommended amount of open space Per Person

In partnership with:

Time of Family Arrival

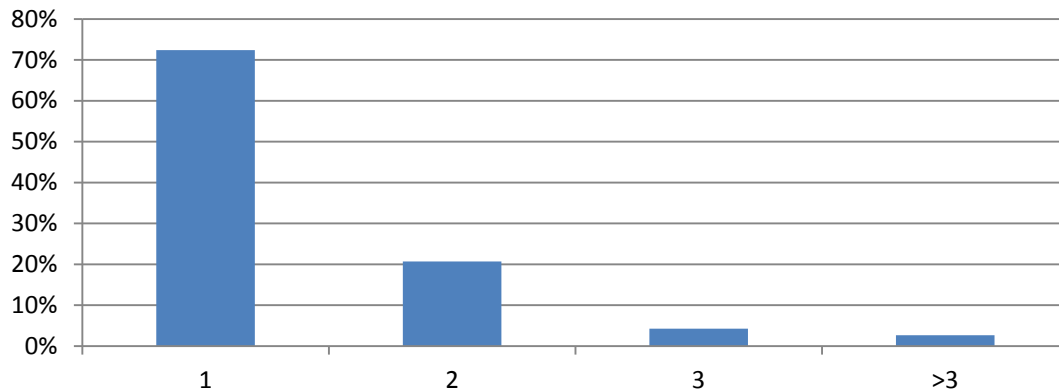


Indications of internal movement within the camp since residents of 1.5 years+ live in the new part of the camp

In partnership with:

Shelter Type

Tent Distribution per Household (when possessing a tent)

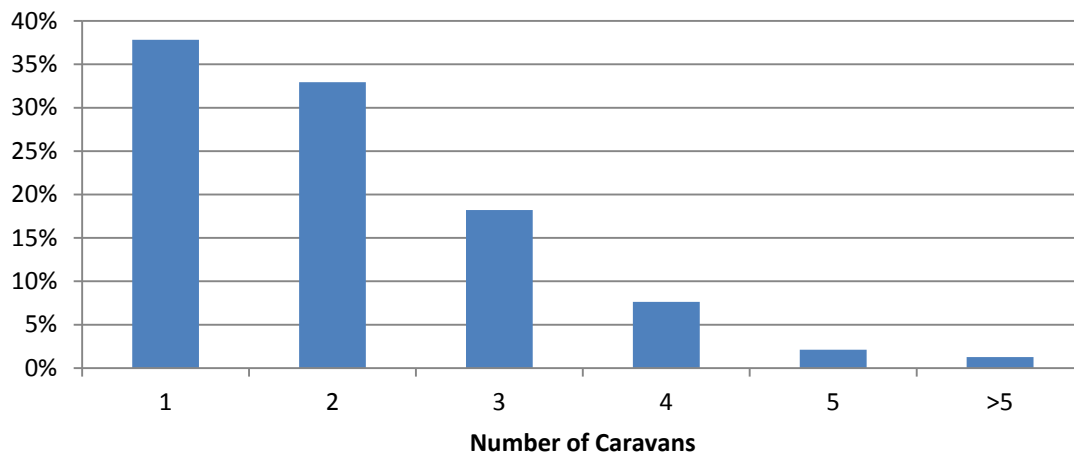


7,822 Tents identified

50% of all households were in possession at least one tent

72% reported to have just 1 tent, **21%** owning 2 and 7% have 3 or more tents per household

Caravan Distribution per Household (when possessing a Caravan)

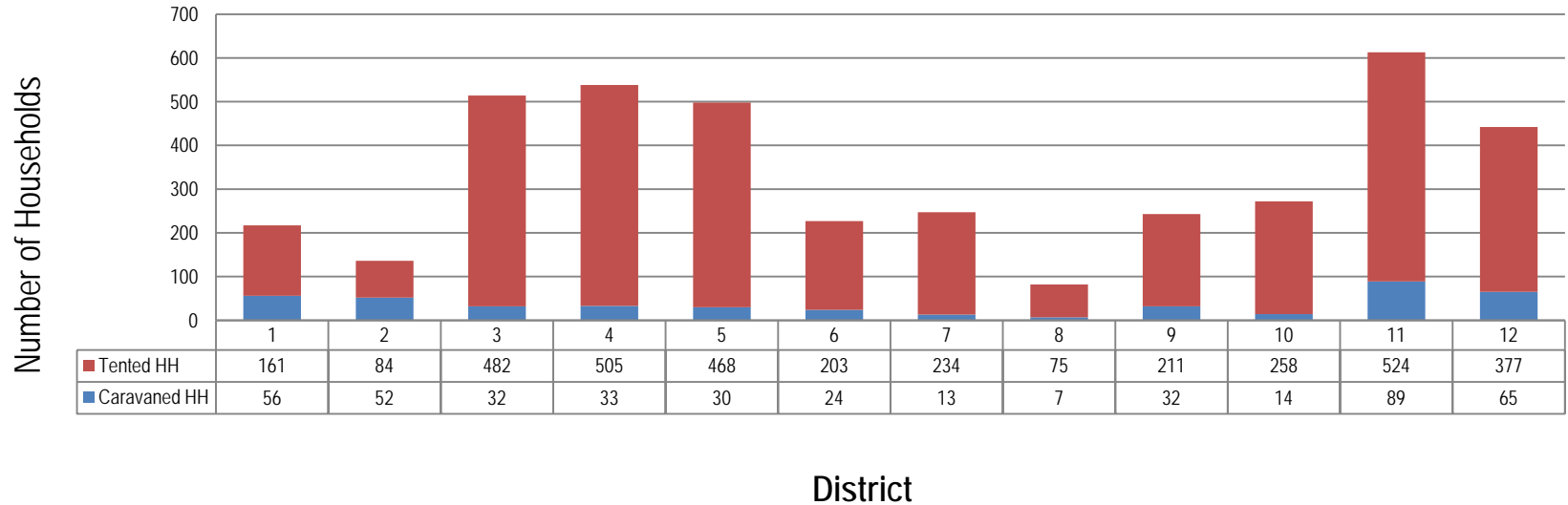


15,532 Caravans identified

38% of households with 1 caravan, 33% with 2, 18%, 8% with 4 and 3% having 5 or more caravans per household (average **1.16** caravans per household)

In partnership with:

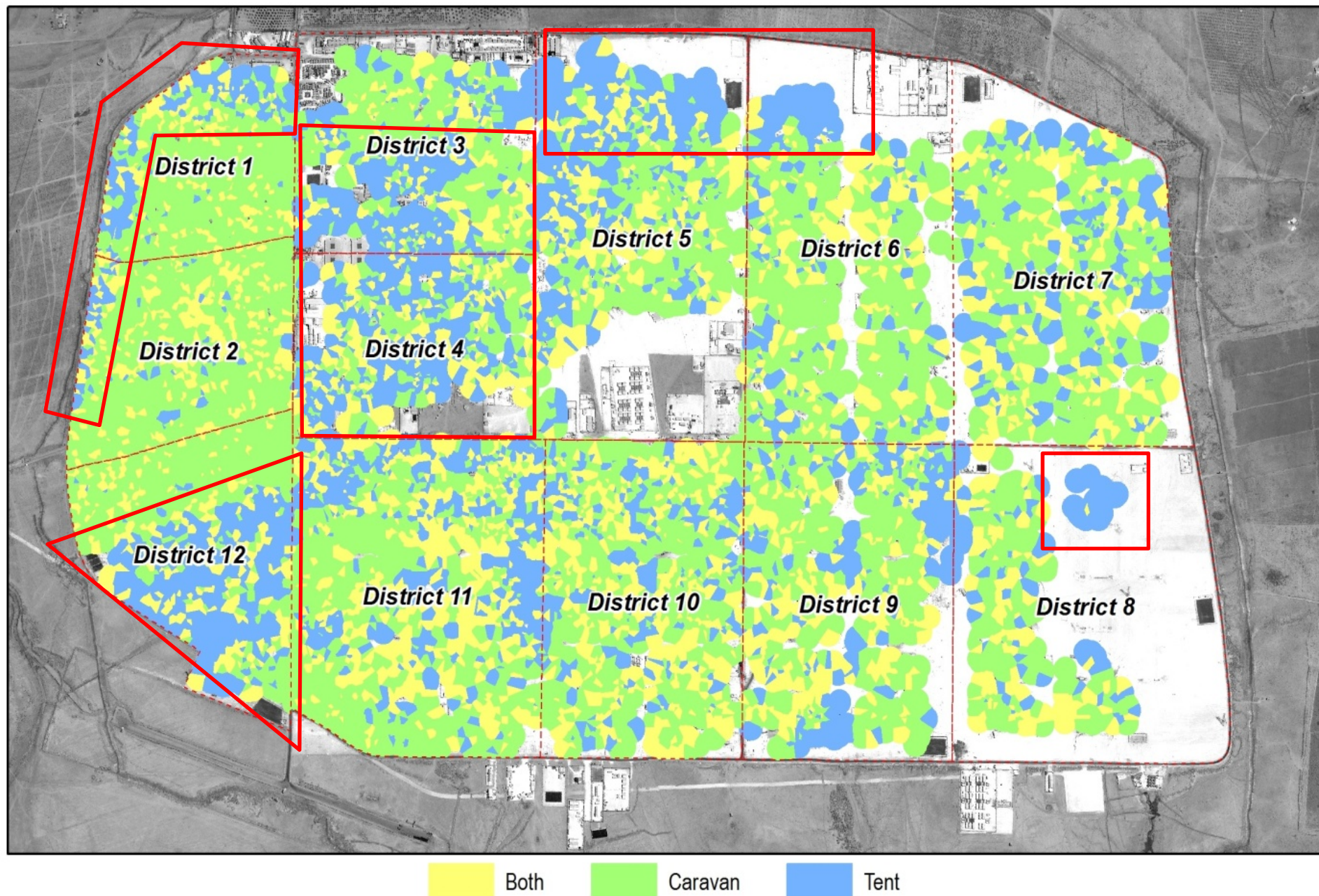
UNHCR Shelter Requirements



Approximately **4050** Households need caravans based on the current population figures. **89%** of the caravans needed are for families living in compounds without a caravan between them.

The remaining **11%** of households possess at least one caravan but are entitled to additional caravans due to large family numbers in the household. Caravans are planned to be distributed per family, rather than per household

Households by Shelter Type



WINTERISATION

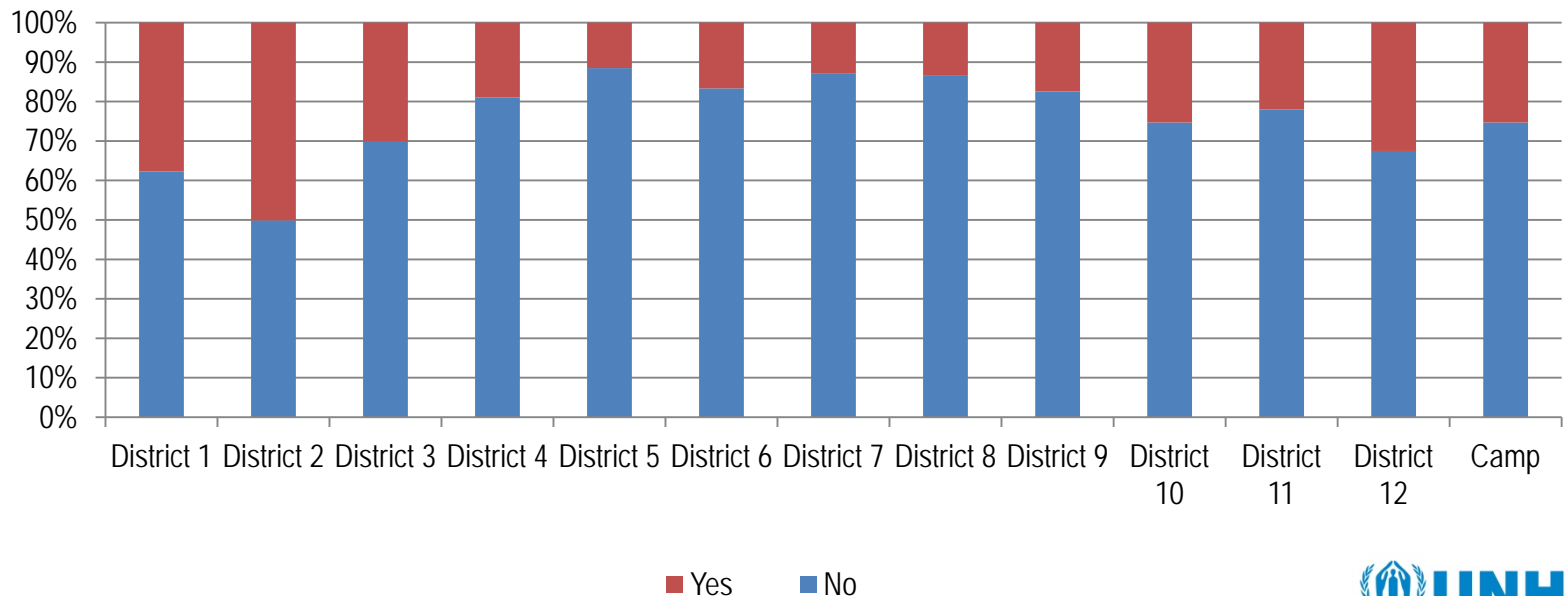


Families with a Stove for Cooking

25% of households in the camp reported having at least one cooking stove.

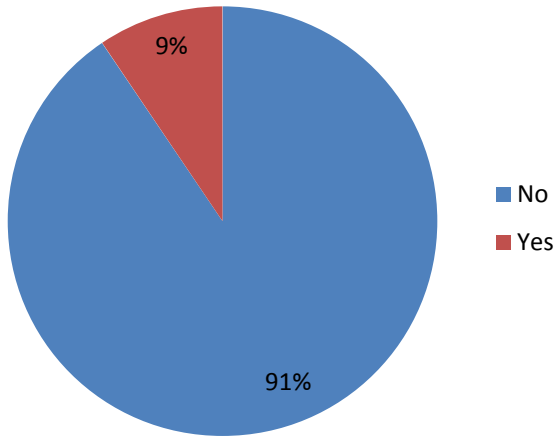
Of the households in possession of a gas stove for cooking (3381), 99% only had only one. Less than 1% of the households owned an electric stove for cooking, and of those 99% only had one also.

104 households reported to have an electric stove compared to **3326** households who have at least one gas stove



In partnership with:

Households with Room Heaters

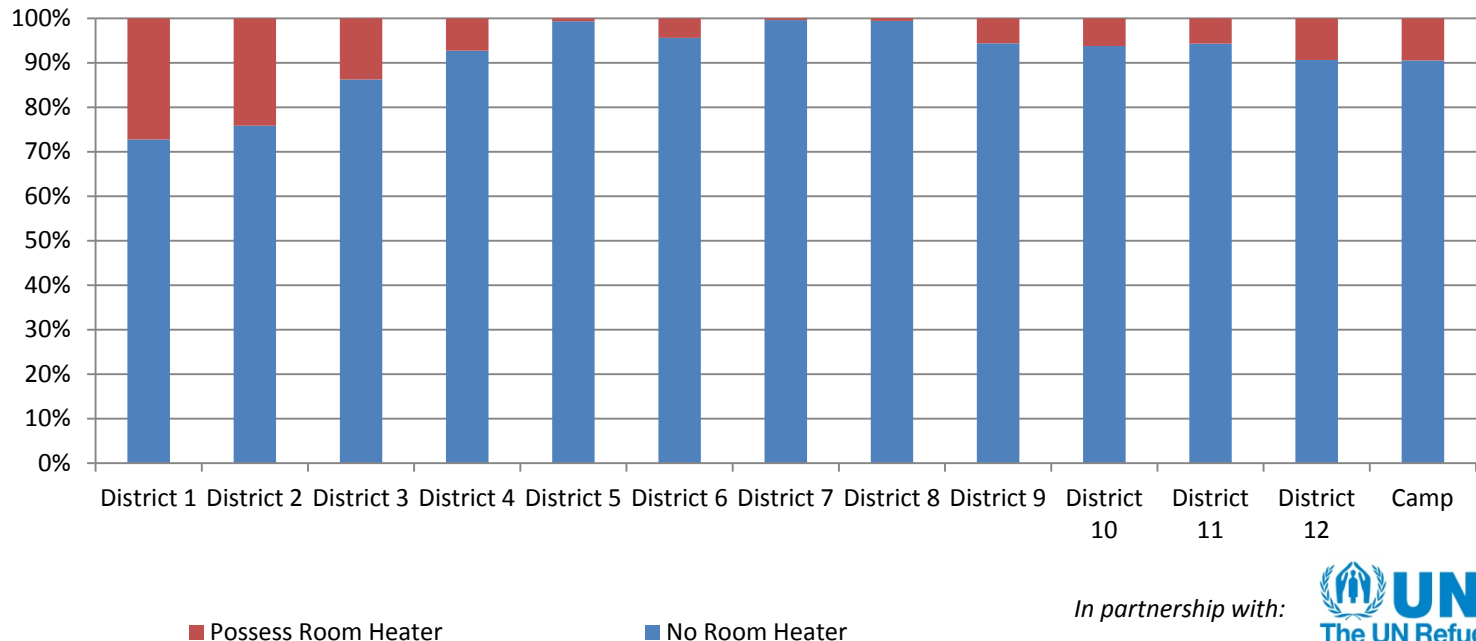


91% of households reported not to have a room heater.

Variations between the districts with District 1 and 2 recording **27%** and **24%** of households with a room heater.

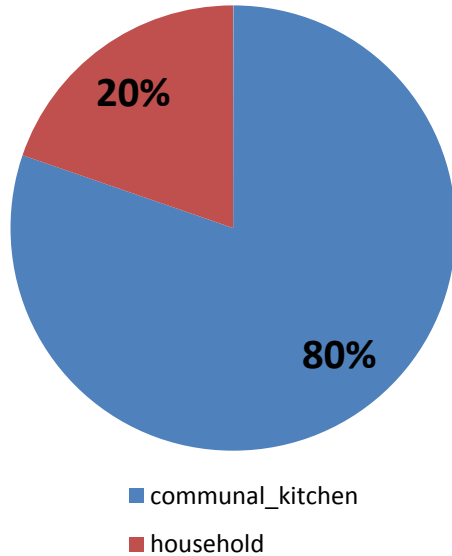
Districts 5, 7 and 8 show the lowest percentages of **1%**, **>1%** and **1%**.

Distribution of Households with Room Heaters



In partnership with:

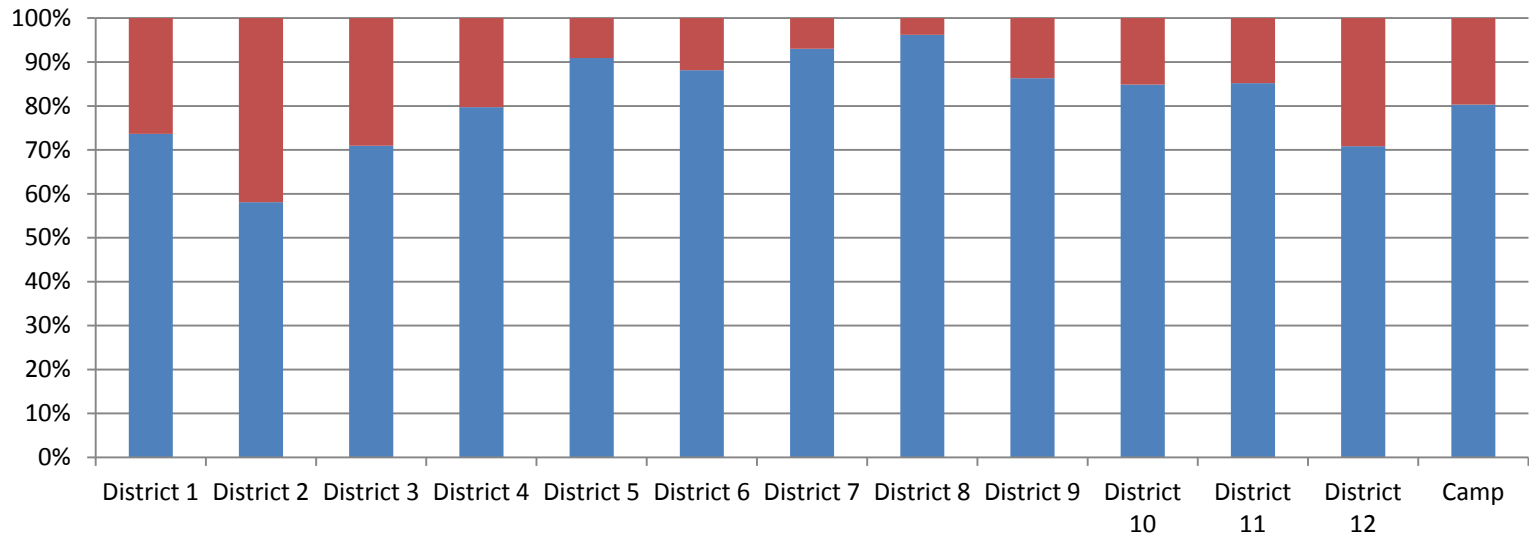
Where People Cook their Meals



80% of the Camp Residents cooking their meals in the communal Kitchens

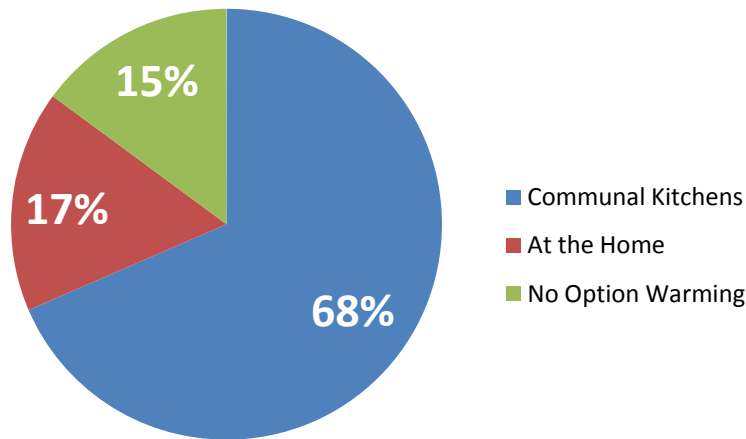
93% of Households use kitchens in District 8 in contrast to 58% in District 2

Only 63% of households with a cooking stove cook their main meals at home; the remaining 37% still use communal kitchens, possibly indicating signs of gas scarcity a concern for the residents



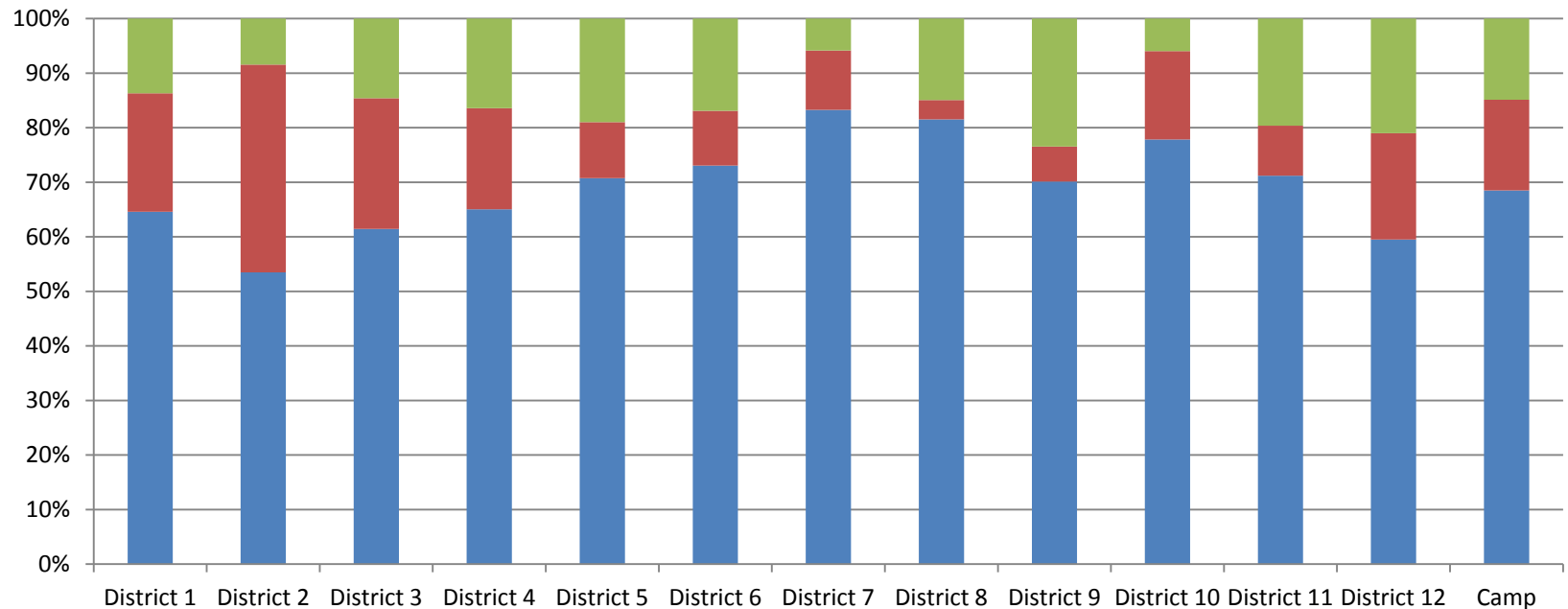
In partnership with:

How People will Warm Water for Showers



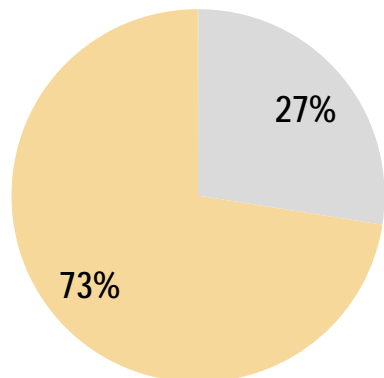
As expected similar relationship with where people cook their meals

However 15% report they have no option for warming water which could be related to gas scarcity, distance to WASH Centres or warming water utensils



In partnership with:

Connectivity to Electricity

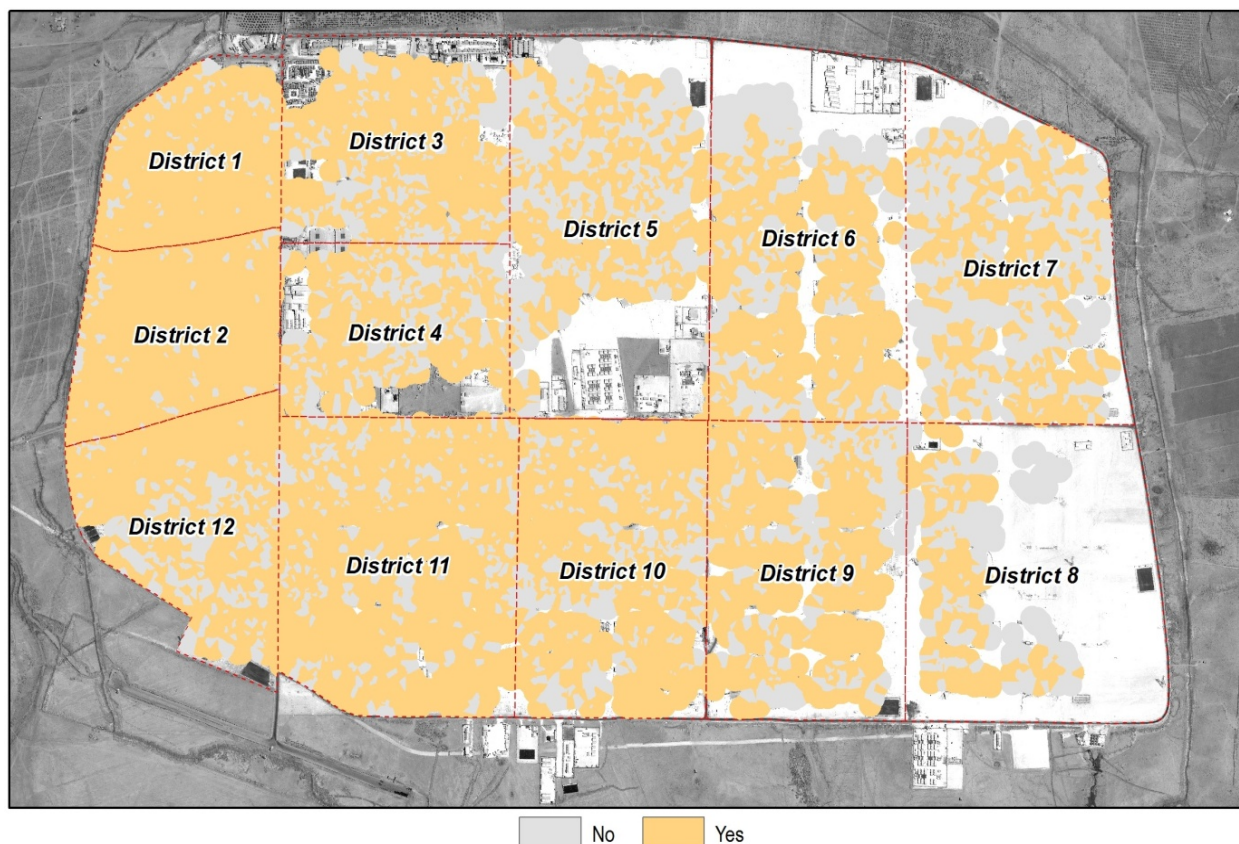


■ No Connection ■ Connected

73% of Households have an internet connection

Of the 27% of households that did not have an electricity connection, **54%** solely lived in a tent, **33%** were living in a caravan, **12%** possessed both shelter types and less than 1% were living in kitchens.

It may be implied that geographical area within the camp may be a larger reason for no connectivity than shelter type.



Other work.....

The beginning of the Za'atari Cadastral System



In partnership with:

Any Questions?

For any REACH Data, please contact:

Reach.mena@impact-initiatives.org