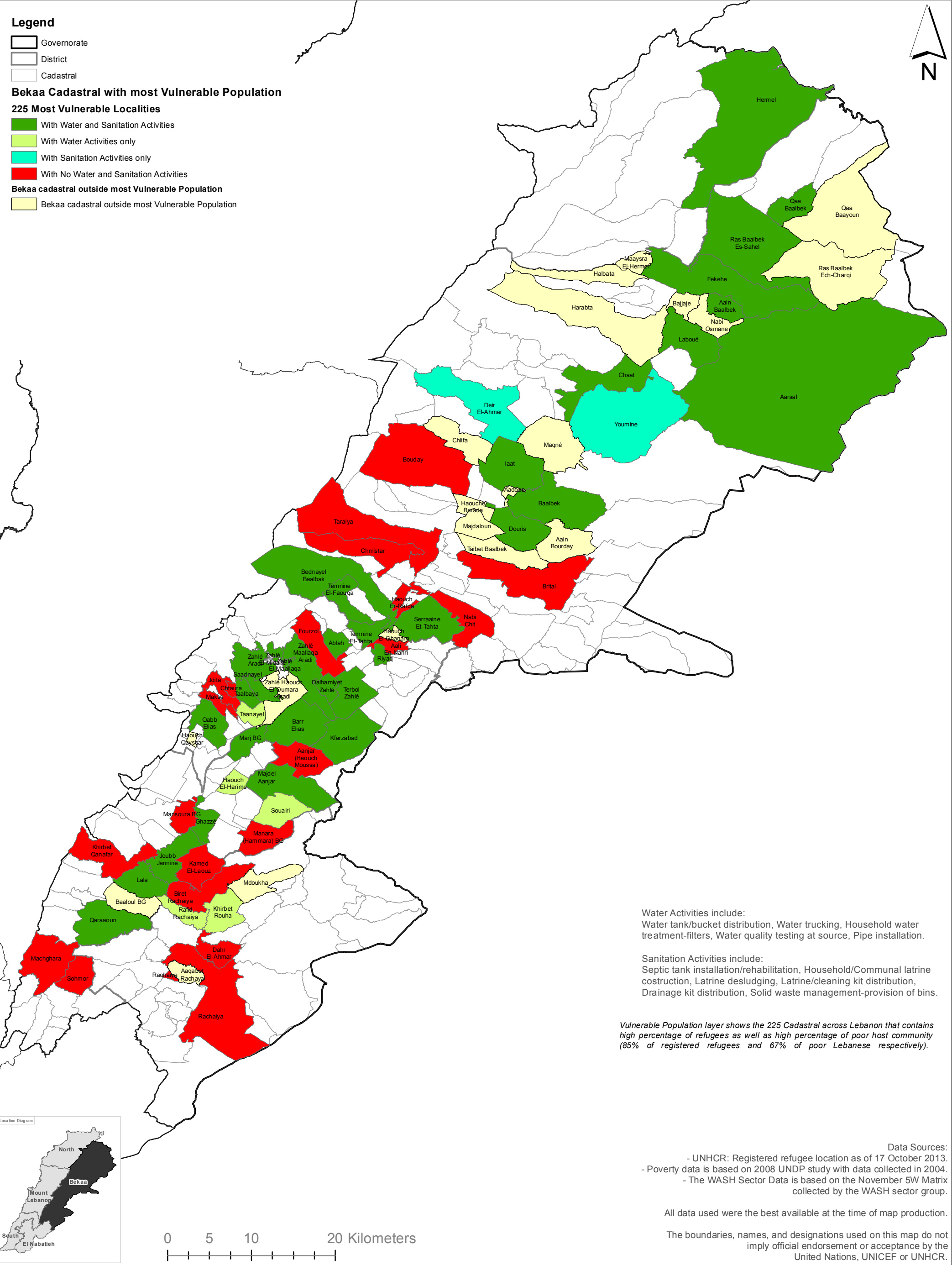


SYRIA REFUGEE RESPONSE
LEBANON Bekaa Governorate
WASH Sector Working Group
Implementation of Water and Sanitation Activities
January to November 2013



Water Activities include:
Water tank/bucket distribution, Water trucking, Household water treatment-filters, Water quality testing at source, Pipe installation.

Sanitation Activities include:
Septic tank installation/rehabilitation, Household/Communal latrine construction, Latrine desludging, Latrine/cleaning kit distribution, Drainage kit distribution, Solid waste management-provision of bins.

Vulnerable Population layer shows the 225 Cadastral across Lebanon that contains high percentage of refugees as well as high percentage of poor host community (85% of registered refugees and 67% of poor Lebanese respectively).

Data Sources:

- UNHCR: Registered refugee location as of 17 October 2013.
- Poverty data is based on 2008 UNDP study with data collected in 2004.
- The WASH Sector Data is based on the November 5W Matrix collected by the WASH sector group.

All data used were the best available at the time of map production.

The boundaries, names, and designations used on this map do not imply official endorsement or acceptance by the United Nations, UNICEF or UNHCR.