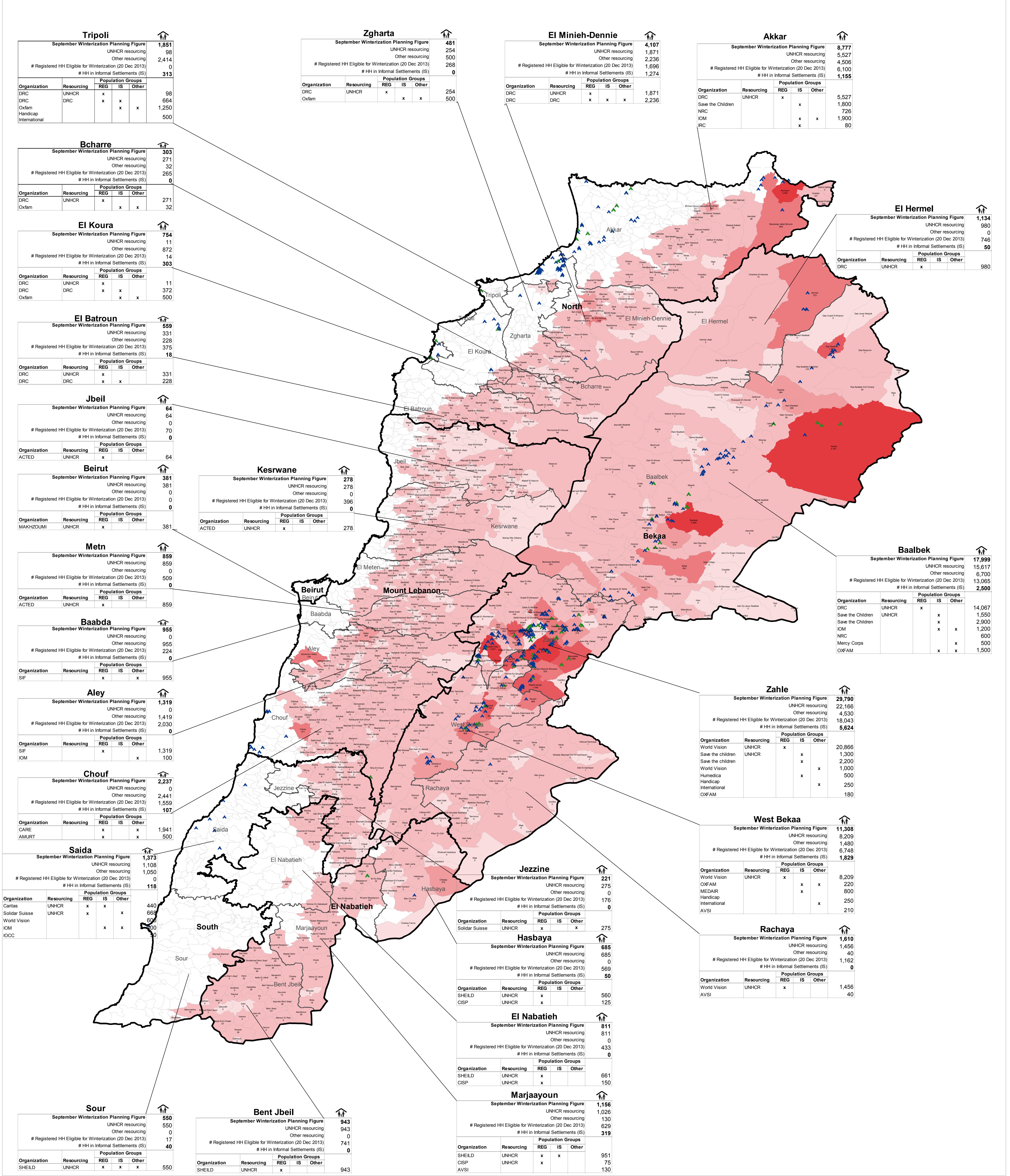


SYRIA REFUGEE RESPONSE

LEBANON Winterization Partner Coordination Map

December 2013



The boundaries, names, and designations used on this map do not imply official endorsement of the United Nations or UNHCR. All data used were the best available at the time of map production.

For more information on winterization targeting and coordination, contact: Charles Higgins at higgins@unhcr.org

GIS and Mapping by UNHCR Lebanon:
Jad Ghosh (Ghosh@unhcr.org)



This map shows:

- The registered caseload for winterization as of 20 December 2013.
- Areas with towns above 500 meters (coloured cadastral zones)
- Informal Settlements (All residents of informal settlements are targeted irrespective of altitude, registration status or vulnerability).

Notes:

- Figures in cadastral zones indicate the total number of registered refugee households targeted by winterization assistance as of 20 Dec 2013
- Figures in the tables show the projected total estimated caseload (households) in need of winterization in each district at end December 2013 (projections were made in September 2013)
- Agencies mentioned and resourcing levels are as they have been notified to UNHCR as at 12 Dec 2013
- For agencies wishing to print out this entire map, please print in color A0 size
- All figures are in number of households
- Informal Settlements (IS) data is as of end October 2013.