

# Camp profile

## Qushtapa Refugee Camp, Erbil, KR - Iraq

Camp opened: 19.08.2013

As of 30 Jan. 2014



### Geographic Snapshot and Contextual Background

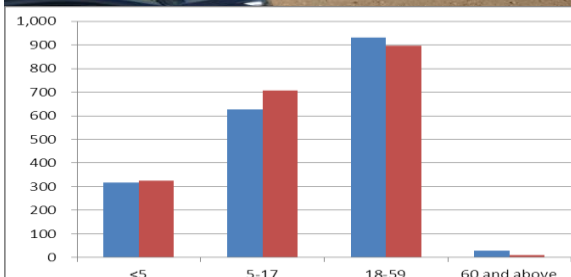
GPS coordinates: 43.98089111 36.019313

Region and State: Qushtapa, Erbil. KR - Iraq

Size of camp area: 426,000 m<sup>2</sup>

Pattern in Population Change: Hosting refugees who entered KR after the 15.8.2013 influx.

Areas of Origin: Majority is from Qamishli, Diralok and Hassaka in Syria



Age and gender break-down of the population as of 27 Jan. 2014

### Refugee Population

approximately  
3,844  
(Individuals)

Planned capacity:  
7,860  
(Individuals)



Needs Met	Analysis	Minimum Sectoral Data (standard)	Minimum Sectoral Data
	<b>Health:</b> There is a permanent PHC in the camp for providing primary health care.	► Extent PoCs have access to primary health care. 1 health centre for 20,000 persons.	► 1 comprehensive primary health care.
	<b>WASH:</b> The sanitation is available in the camp. Verifications and updates continue.	► Liters of water/person /day: 20 ► Persons per latrine: <20 ► Persons per shower: <20	► Liters of water/person /day: 40 - 55 ► Persons per latrine: 20 ► Persons per showers: 20
	<b>Protection:</b> Registration Level 1 is completed. Verifications and updates ongoing.	► 100 % of PoC registered on individual basis	► Population registered on family basis.
	<b>Food:</b> Adequate quality and quantity of food aid provided.	► Extent food aid is appropriately distributed. ► Kilocalorie (Kcal)/person/day: 2,100	► Kilocalories person /day: 2,100
	<b>CRIs :</b> Refugees received NFI kits upon arrival in the camp including distribution of winterization kits.	► 100% of households whose needs for basic and domestic items are met	► 100 % of households whose needs for basic and domestic items are met
	<b>Shelter:</b> Shelter and infrastructure established, improved and maintained.	► Average camp area per person 30 sq m ► 100% of households living in adequate dwellings	► Average camp area per person 37.5 sq m ► 100 % of households living in adequate dwellings
Minimum Sectoral Data Key:		= standard met or exceeded	= standard not met

