





SYRIA REFUGEE RESPONSE
LEBANON Bekaa Governorate - Map1

WASH Sector Working Group
Implementation of Water and Sanitation Activities
January to December 2013



WASH Sector Working Group
UNHCR Samuel Gonzaga, gonzagas@unhcr.org
UNICEF David Adams, dadams@unicef.org

GIS and Mapping by UNHCR and UNICEF
For more information and updates contact
Aoife Long, along@unicef.org



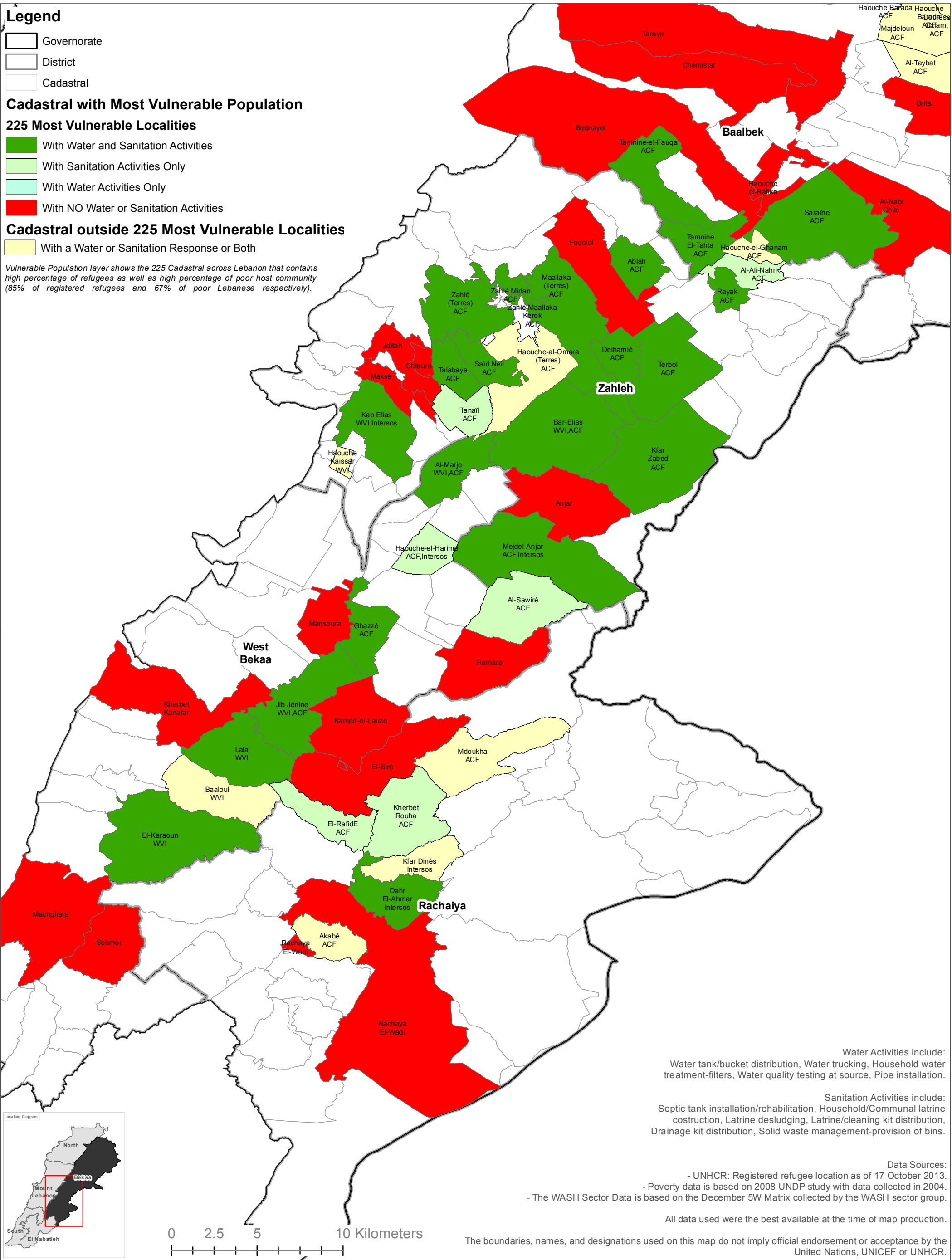
- Legend**
- Governorate
 - District
 - Cadastral

Cadastral with Most Vulnerable Population
225 Most Vulnerable Localities

- With Water and Sanitation Activities
- With Sanitation Activities Only
- With Water Activities Only
- With NO Water or Sanitation Activities

Cadastral outside 225 Most Vulnerable Localities
With a Water or Sanitation Response or Both

Vulnerable Population layer shows the 225 Cadastral across Lebanon that contains high percentage of refugees as well as high percentage of poor host community (85% of registered refugees and 67% of poor Lebanese respectively).



Water Activities include:
Water tank/bucket distribution, Water trucking, Household water treatment-filters, Water quality testing at source, Pipe installation.

Sanitation Activities include:
Septic tank installation/rehabilitation, Household/Communal latrine construction, Latrine desludging, Latrine/cleaning kit distribution, Drainage kit distribution, Solid waste management-provision of bins.

Data Sources:
- UNHCR: Registered refugee location as of 17 October 2013.
- Poverty data is based on 2008 UNDP study with data collected in 2004.
- The WASH Sector Data is based on the December 5W Matrix collected by the WASH sector group.

All data used were the best available at the time of map production.

The boundaries, names, and designations used on this map do not imply official endorsement or acceptance by the United Nations, UNICEF or UNHCR.

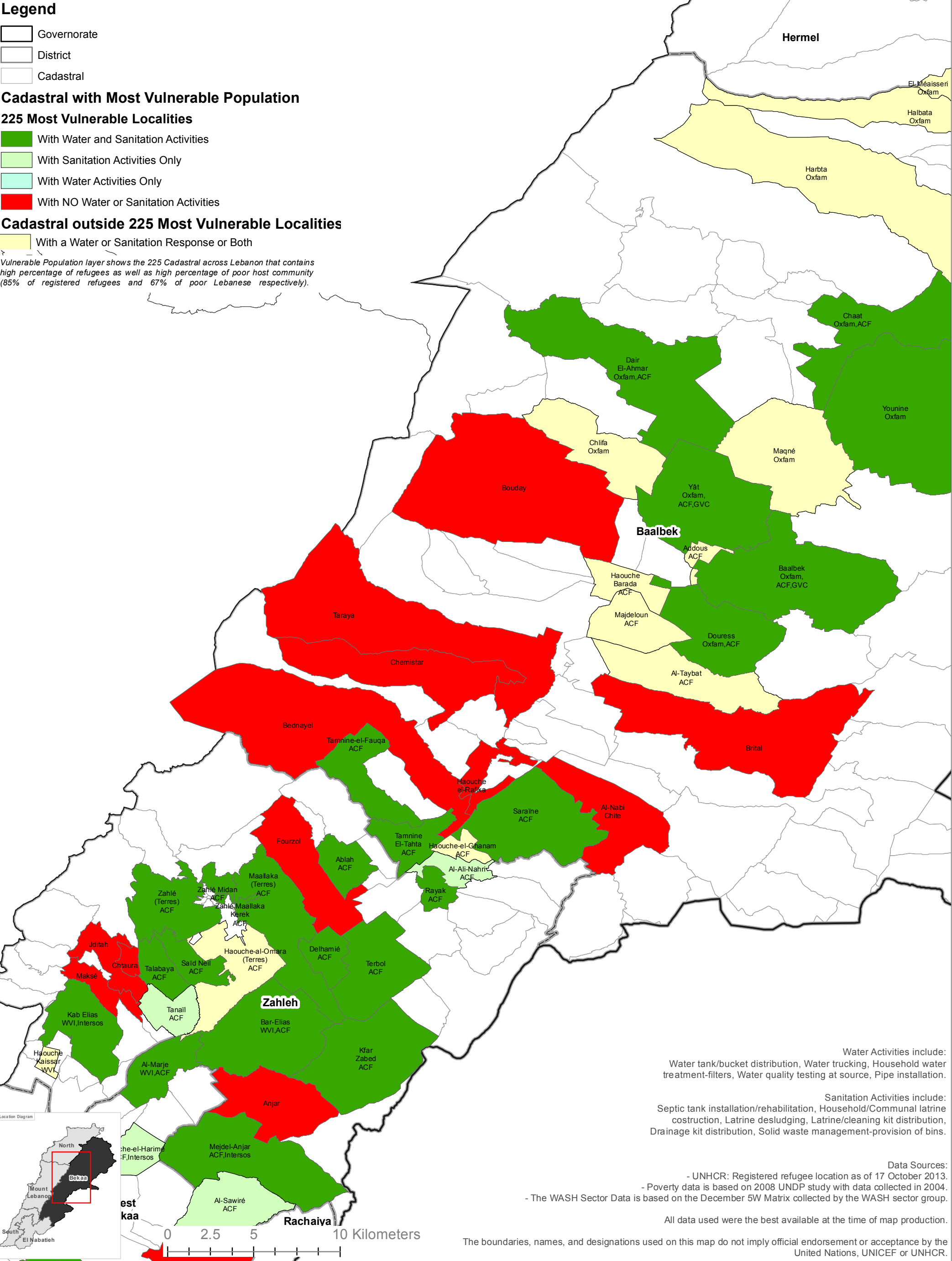
SYRIA REFUGEE RESPONSE

LEBANON Bekaa Governorate - Map2

WASH Sector Working Group

Implementation of Water and Sanitation Activities

January to December 2013



Water Activities include:
Water tank/bucket distribution, Water trucking, Household water treatment-filters, Water quality testing at source, Pipe installation.

Sanitation Activities include:
Septic tank installation/rehabilitation, Household/Communal latrine construction, Latrine desludging, Latrine/cleaning kit distribution, Drainage kit distribution, Solid waste management-provision of bins.

Data Sources:
- UNHCR: Registered refugee location as of 17 October 2013.
- Poverty data is based on 2008 UNDP study with data collected in 2004.
- The WASH Sector Data is based on the December 5W Matrix collected by the WASH sector group.

All data used were the best available at the time of map production.

The boundaries, names, and designations used on this map do not imply official endorsement or acceptance by the United Nations, UNICEF or UNHCR.

SYRIA REFUGEE RESPONSE

LEBANON Bekaa Governorate - Map3

WASH Sector Working Group

Implementation of Water and Sanitation Activities

January to December 2013

