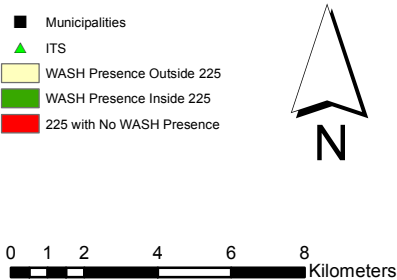
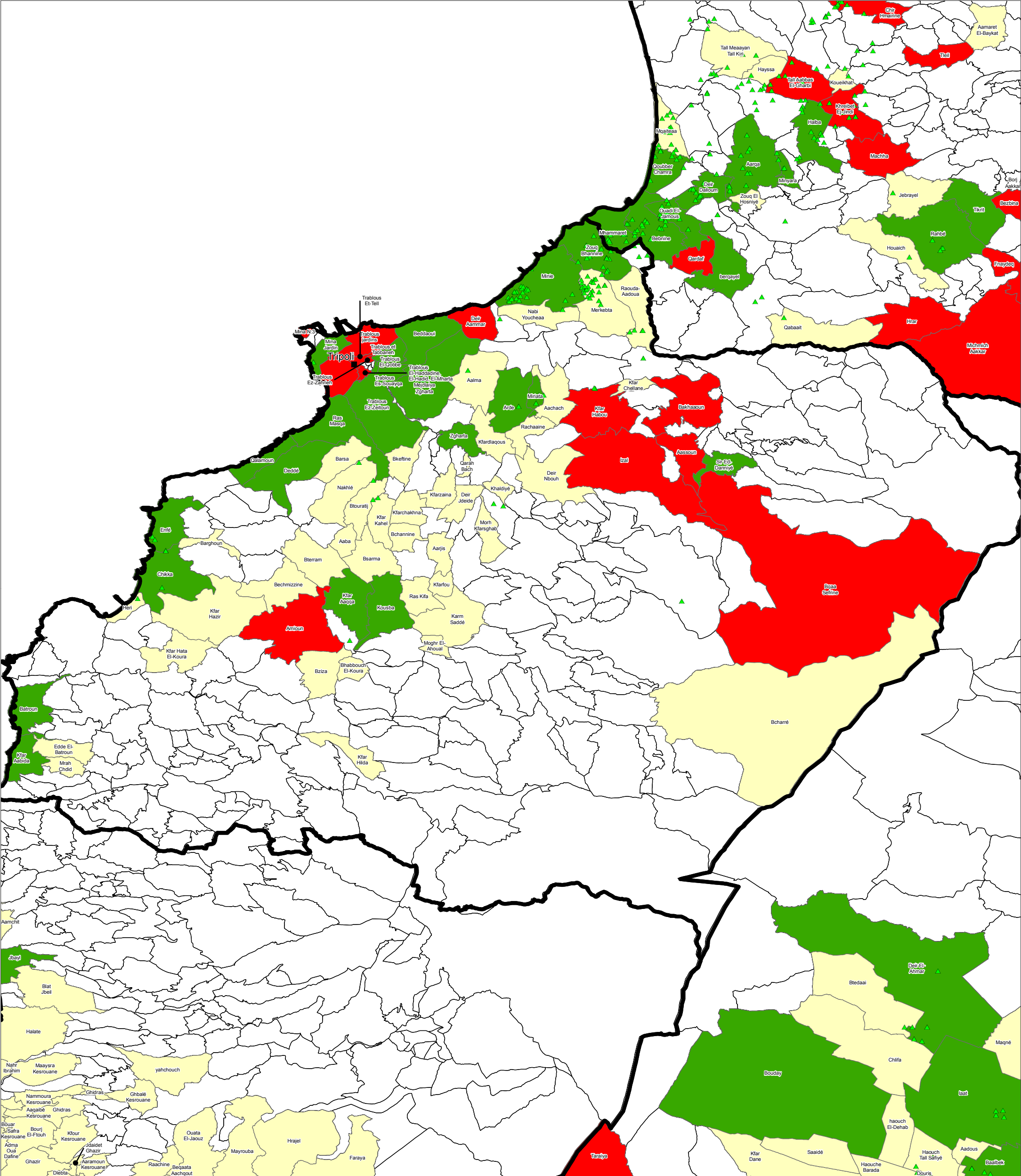


SYRIA REFUGEE RESPONSE
Tripoli + 5
WASH Sector Working Group
Implementation of WASH Activities



WASH Sector Working Group
GIS and Mapping by UNHCR and UNICEF
For more information and updates contact
William Lavell wlavell@unicef.org

Date: 5/5/2014



Overview:
This maps shows the location of WASH Activities within the 225 most vulnerable localities and at a general cadastral level since January 2014. The names of the cadastrals are provided as a spatial reference.
Data Sources:
- The WASH Sector Data are based on Activity Info Reporting.
All data used were the best available at the time of map production.
The boundaries, names, and designations used on this map do not imply official endorsement or acceptance by the United Nations, UNICEF or UNHCR.

WASH Activities:
Activities shown are based on the indicators from ActivityInfo
For further information about this map please contact
William Lavell
Wlavell@unicef.org