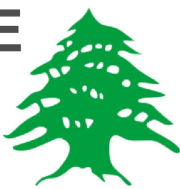


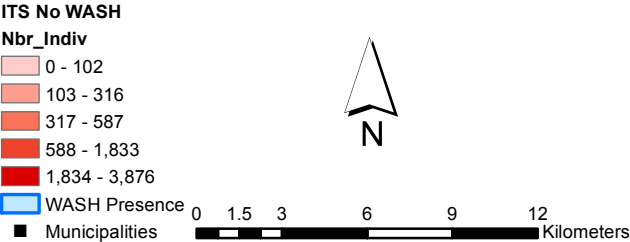
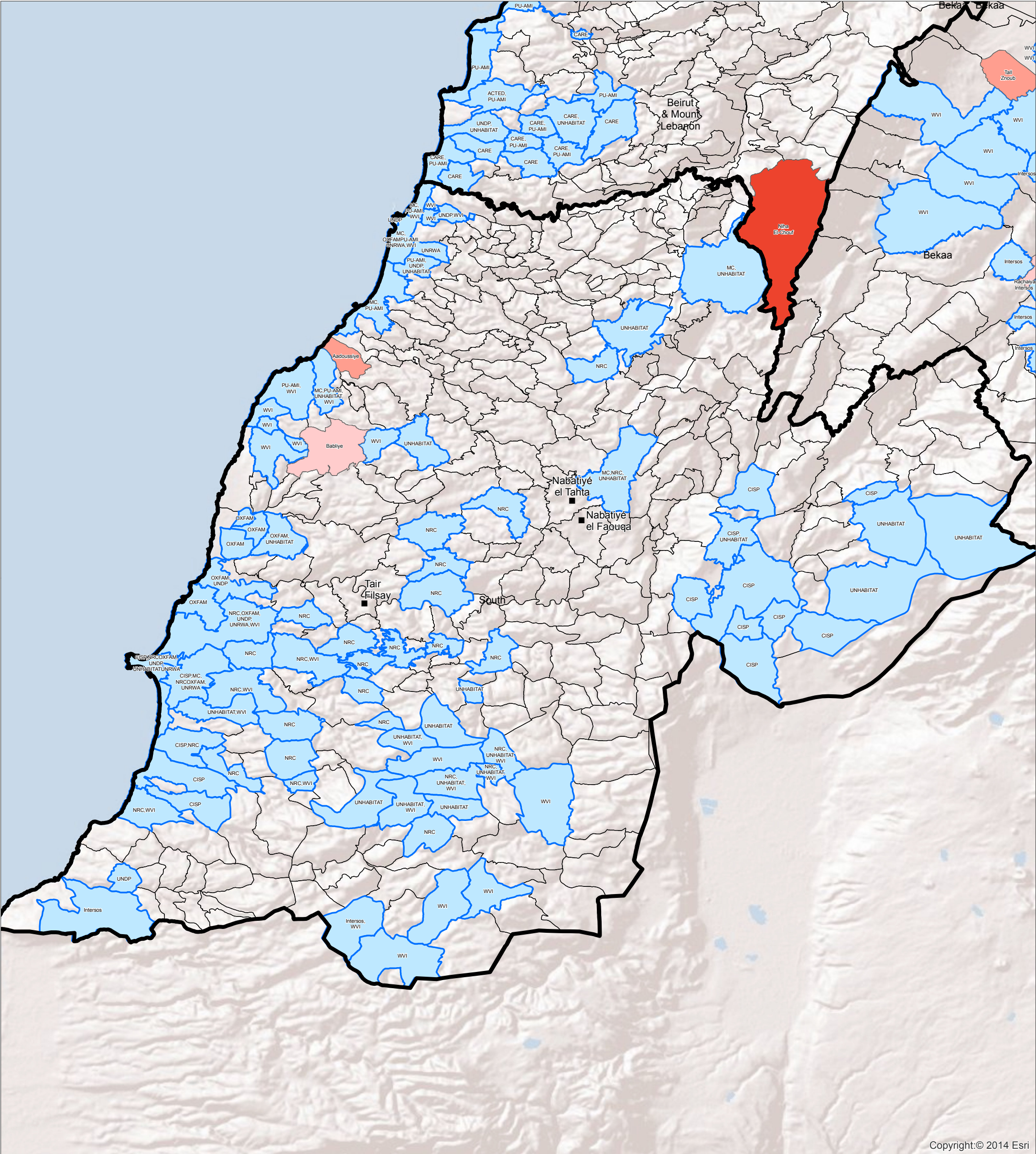
SYRIA REFUGEE RESPONSE

South
WASH Sector Working Group
Cadastrals without WASH Presence and
of Individuals in ITS



WASH Sector Working Group
GIS and Mapping by UNHCR and UNICEF
For more information and updates contact
William Lavell wlavell@unicef.org

Date: 5/5/2014



Overview:
This map is an analysis of the gaps up to March 2014. Areas in shades of red show concentrations of persons in ITS at a cadastral level with no WASH presence. Whereas areas in blue show WASH presence and also WASH partners present in those sites. Note*** the method used here shows presence as being any type of WASH activity and not necessarily a full WASH response.
Data Sources:
- The WASH Sector Data is based on Activity Info Reporting.
The boundaries, names, and designations used on this map do not imply official endorsement or acceptance by the United Nations, UNICEF or UNHCR.

WASH Activities:
Activities shown are based on the indicators from ActivityInfo
For further questions or information please contact William Lavell wlavell@unicef.org

Copyright:© 2014 Esri