

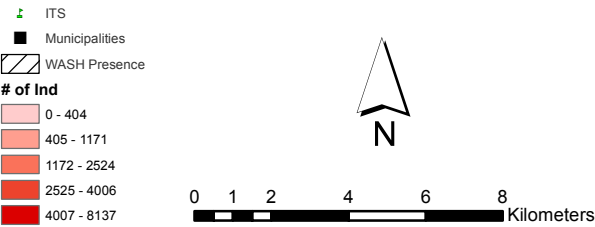
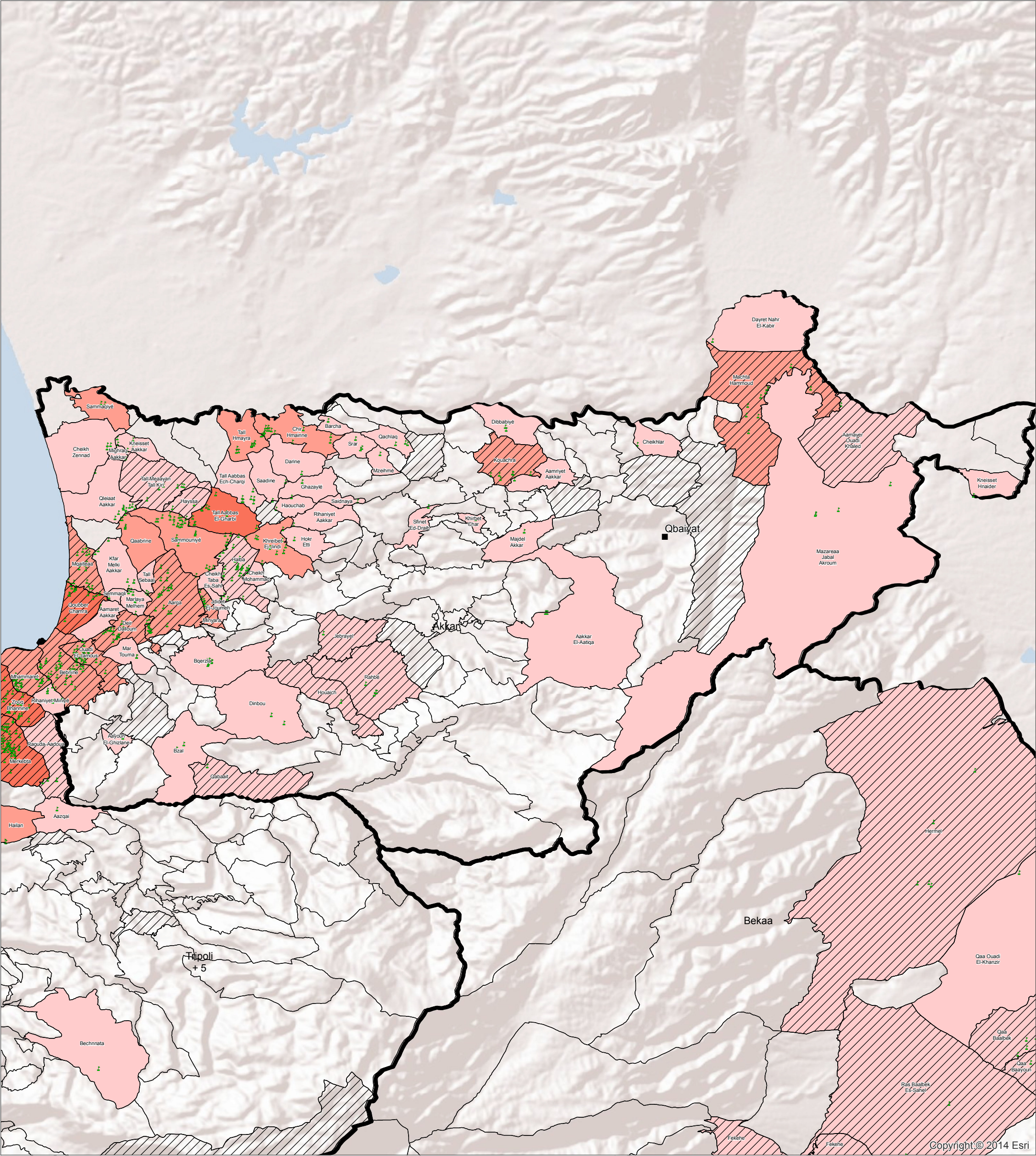
SYRIA REFUGEE RESPONSE

Akkar WASH Sector Working Group Implementation of WASH Activities and ITS Density and Location



WASH Sector Working Group
GIS and Mapping by UNHCR and UNICEF
For more information and updates contact
William Lavell wlavell@unicef.org

Date: 5/5/2014



Overview:
This map shows the locations of informal tent settlements and the # of persons in ITS per cadastral as well as WASH presence. Please see the legend for the symbology used.
Data Sources:
- The WASH Sector Data is based on Activity Info Reporting cumulative up to the end of March 2014.
- WASH presence is based on any WASH activity and not

-The boundaries, names, and designations used on this map do not imply official endorsement or acceptance by the United Nations, UNICEF or UNHCR.
WASH Activities:
Activities shown are based on the indicators from ActivityInfo

Copyright© 2014 Esri

ITSDensity_Akaar

Unicef_Div	District	Cadastarl	Local_Name	Nbr_Indiv	Nbr_Tents	Partners
	Akkar	Akkar	Tall Aabbas El-Gharbi	Hissa	1833.0	207.0
	Akkar	Akkar	Qoubber Chamra	qobet chamra 1	1386.0	201.0
	Akkar	Akkar	Mhammaret	El Mahmra 2	1171.0	198.0
	Akkar	Akkar	Mqaiteaa	Mkaytaa - Tal Hayat	1155.0	164.0
	Akkar	Akkar	Bebnine	El Mahmra 1	1068.0	208.0
	Akkar	Akkar	Khreibet Ej-Jindi	Kouikhat	962.0	199.0
	Akkar	Akkar	Deir Dalloum	Borj el Arab	910.0	170.0
	Akkar	Akkar	Chir Hmairine	checikh ayyach	908.0	134.0
	Akkar	Akkar	Tall Hmayra	Tal Hmayra	896.0	136.0
	Akkar	Akkar	Aarqa	Arka1	797.0	159.0
	Akkar	Akkar	Sammouniye	cheikh mohamad	778.0	118.0
	Akkar	Akkar	Minyara	Arka 2	735.0	121.0
	Akkar	Akkar	Ouadi El-Jamous	Ouadi Ej jamous 1	692.0	128.0
	Akkar	Akkar	Qaabrine	qlayaat	550.0	50.0
	Akkar	Akkar	Kouachra	kwechra	479.0	95.0
	Akkar	Akkar	Sammaqiye	Semmakiyeh	460.0	86.0
	Akkar	Akkar	Machta Hammoud	Machta Hamoud	448.0	70.0
	Akkar	Akkar	Saadine	hoker houchab	404.0	68.0
	Akkar	Akkar	Tall Meaayan Tall Kiri	Tal Maayan	288.0	40.0
	Akkar	Akkar	Aamaret Aakkar	wadi jamous	274.0	29.0
	Akkar	Akkar	Kfar Melki Aakkar	kafar MALKI	274.0	51.0
	Akkar	Akkar	Hokr Etti	tal hayat	210.0	35.0
	Akkar	Akkar	Cheikh Mohammad		206.0	41.0

Unicef_Div	District	Cadastarl	Local_Name	Nbr_Indiv	Nbr_Tents	Partners
	Akkar	Akkar Halba	cheikh mohamad	182.0	33.0	CARE,PU-AMI
	Akkar	Akkar Mazareaa Jabal Akroum	Qinye	172.0	29.0	
	Akkar	Akkar Qleiaat Aakkar	qlayaat	168.0	31.0	
	Akkar	Akkar Rahbe	rahbe (deir aouza)	132.0	26.0	CONCERN
	Akkar	Akkar Kneisset Aakkar	knayse	131.0	19.0	
	Akkar	Akkar Semmaqli	kobbeit sleiman-Addeh 3	125.0	35.0	
	Akkar	Akkar Jdidet Ej-Joumeh	cheik taba	121.0	22.0	
	Akkar	Akkar Aamriyet Aakkar	kwechra	108.0	18.0	
	Akkar	Akkar Barcha		107.0	19.0	
	Akkar	Akkar Aamayer	El Hichi 1	103.0	15.0	NRC
	Akkar	Akkar Houaich	Hwaysh	102.0	21.0	CONCERN,URDA
	Akkar	Akkar Cheikh Zennad	tall bibi	96.0	13.0	
	Akkar	Akkar Bzal		94.0	15.0	
	Akkar	Akkar Hayssa	balanet l hissa	94.0	20.0	PU-AMI
	Akkar	Akkar Cheikh Taba Es-Sahl	cheik taba	82.0	12.0	
	Akkar	Akkar Ghazayle	ghzayle	76.0	13.0	
	Akkar	Akkar Mighraq Aakkar	knayse	73.0	12.0	
	Akkar	Akkar Jebrayel	ilat	70.0	10.0	CONCERN
	Akkar	Akkar Aakkar El-Aatiqa	l koss	70.0	15.0	
	Akkar	Akkar Tall Aabbas Ech-Charqi	talaabas l charki	53.0	9.0	
	Akkar	Akkar Mar Touma	Martouma 1	49.0	8.0	
	Akkar	Akkar Marlaya Melhem	merlayet melhem	48.0	13.0	
	Akkar	Akkar Qabaaait	kabiit	46.0	8.0	CONCERN
	Akkar	Akkar Haouchab	Hawshab	42.0	8.0	
	Akkar	Akkar Darine	darine	36.0	8.0	

Unicef_Div	District	Cadastarl	Local_Name	Nbr_Indiv	Nbr_Tents	Partners
	Akkar	Akkar	Rihaniyet Aakkar	al jaar	26.0	6.0
	Akkar	Akkar	Qachlaq		16.0	3.0
	Akkar	Akkar	Bqerzla	bqerzla	14.0	7.0
	Akkar	Akkar	Tall Sebaal		0.0	3.0
	Akkar	Akkar	Dibbabiye		0.0	0.0
	Akkar	Akkar	Aayoun El-Ghizlane		0.0	0.0
	Akkar	Akkar	Majdel Akkar		0.0	0.0
	Akkar	Akkar	Cheikhlar		0.0	0.0
	Akkar	Akkar	Kneisset Hnaider		0.0	0.0
	Akkar	Akkar	Srar		0.0	0.0
	Akkar	Akkar	Dinbou		0.0	2.0
	Akkar	Akkar	Mzeihme		0.0	0.0
	Akkar	Akkar	Dayret Nahr El-Kabir	Arida	0.0	0.0
	Akkar	Akkar	Saidnaya		0.0	0.0
	Akkar	Akkar	Sfinet Ed-Draib	less than 4	0.0	0.0
	Akkar	Akkar	Khirbet Char		0.0	0.0