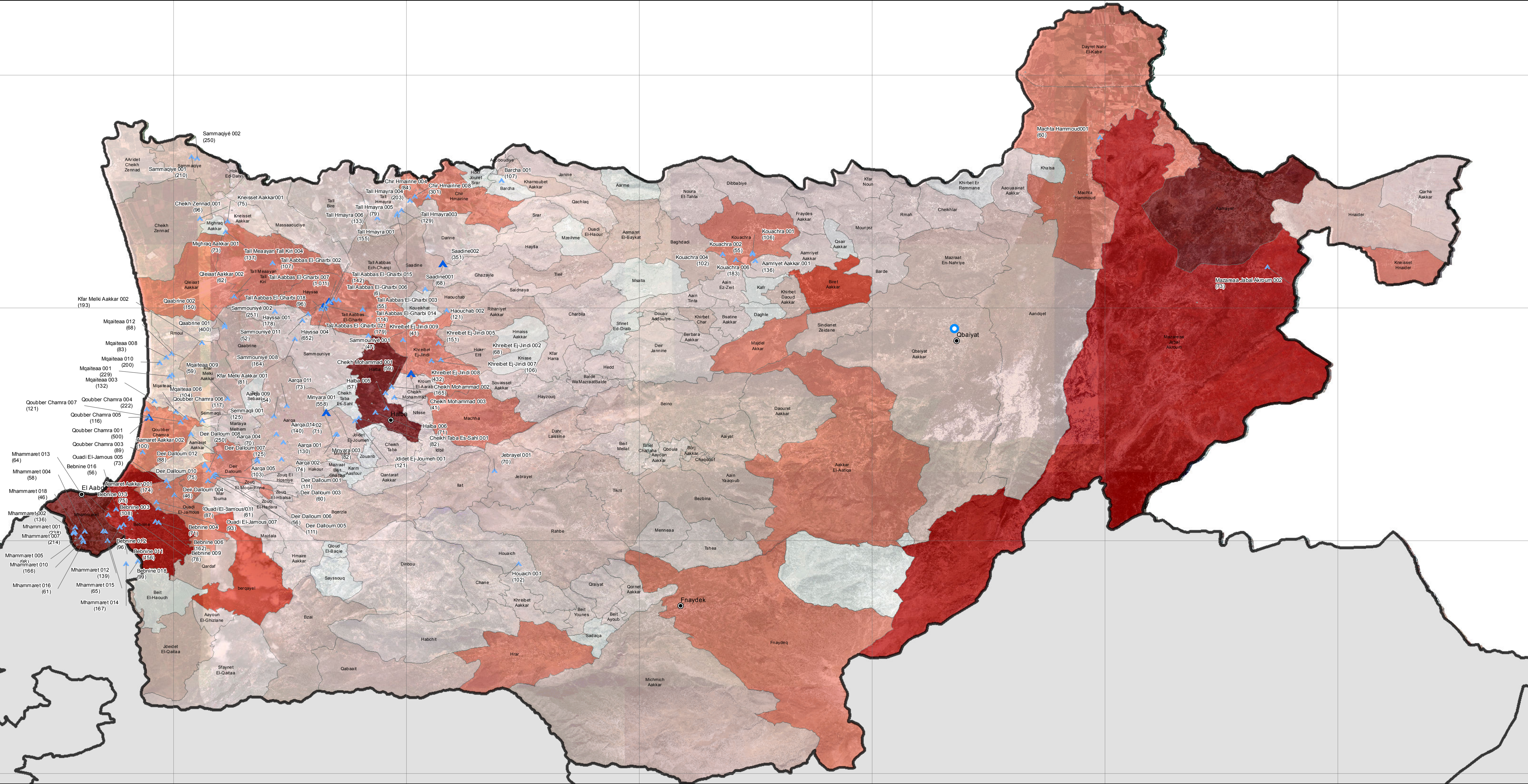


SYRIA REFUGEE RESPONSE

LEBANON, North Governorate, Akkar District

Informal Settlements (IS) Locations and Number of Persons per IS

As of 11 April 2014



**Notes**

The boundaries, names and designations used on this map do not imply official endorsement of the United Nations. All data used are the best available at the time of map production.

Data Sources:

- UNHCR
- Lebanese Border, Caza and Cadastral Boundaries: NPMPLT 2005.
- IS Mapping by MEDAIR - 11 April 2014
- Geographic Projection WGS 1984

Registered Refugees Figures by UNHCR as of 31 March 2014.

For more information contact Rana G. Ksaifi at [ksaifi@unhcr.org](mailto:ksaifi@unhcr.org)

GIS and Mapping by UNHCR. For information and updates contact: Jad Ghosn: [ghosn@unhcr.org](mailto:ghosn@unhcr.org)

Maroun Sader: [sader@unhcr.org](mailto:sader@unhcr.org)

NPMPLT: National Physical Master Plan for the Lebanese Territory

**Legend**

● UNHCR Field Office

● Main Towns

**No. of Refugees per Cadastral**

0
1 - 100
101 - 1,000
1,001 - 3,000
3,001 - 5,000
5,001 - 7,500
7,501 - 15,000

**Tents**

< 10
10 - 50
50 - 100
> 100

Minyara 001: Pcode\_Name (558) : Number of Persons per IS

Location Diagram

