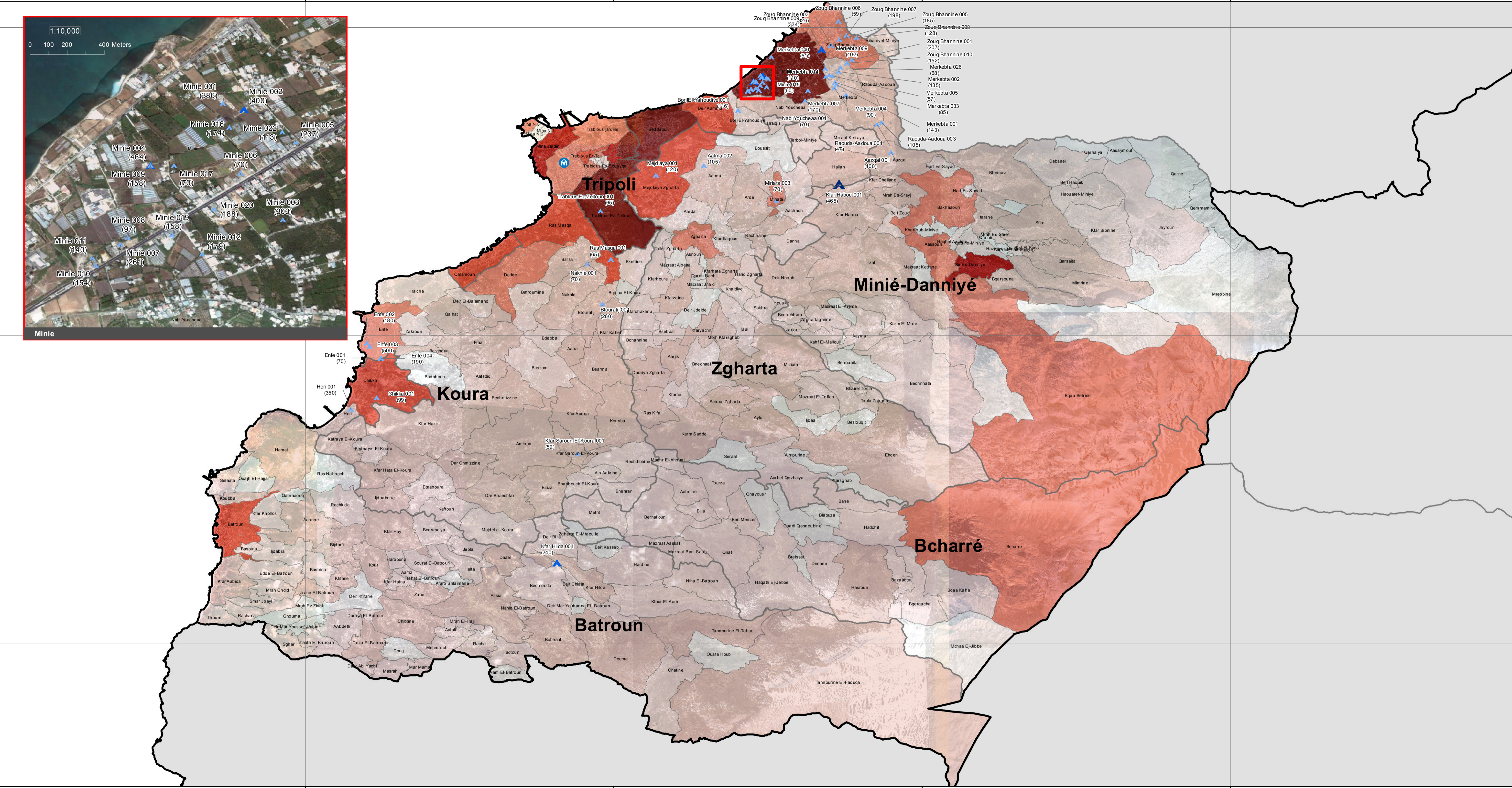


SYRIA REFUGEE RESPONSE

LEBANON North Governorate, Tripoli, Batroun, Bcharreh, El Koura, El Minieh-Dennieh, Zgharta Districts (T+5)

Informal Settlements (IS) Locations and Number of Persons per IS

As of 11 April 2014



**Legend**

UNHCR Sub Office

**Tents**

- < 10
- 10 - 50
- 50 - 100
- > 100

Minie 002: Pcode\_Name  
(400): Number of Persons per IS

**No. of Refugees per Cadastral**

- 0
- 1 - 100
- 100 - 1000
- 1000 - 3000
- 3000 - 5000
- 5000 - 10000
- 10000 - 18200

Governorate

Caza

**Notes**

The boundaries, names and designations used on this map do not imply official endorsement of the United Nations. All data used are the best available at the time of map production.

**Data Sources:**

- UNHCR
- Lebanese Border, Caza and Cadastral Boundaries: NPMPLT 2005.
- IS Mapping by MEDAIR - 11 April 2014
- Geographic Projection WGS 1984

Registered Refugees Figures by UNHCR as of 31 March 2014.  
For more information contact Rana G. Ksafi at ksafi@unhcr.org

GIS and Mapping by UNHCR. For Information and updates  
contact: Jad Ghosn: ghosn@unhcr.org  
Maroun Sader: sader@unhcr.org

*NPMPLT: National Physical Master Plan for the Lebanese Territory*

