

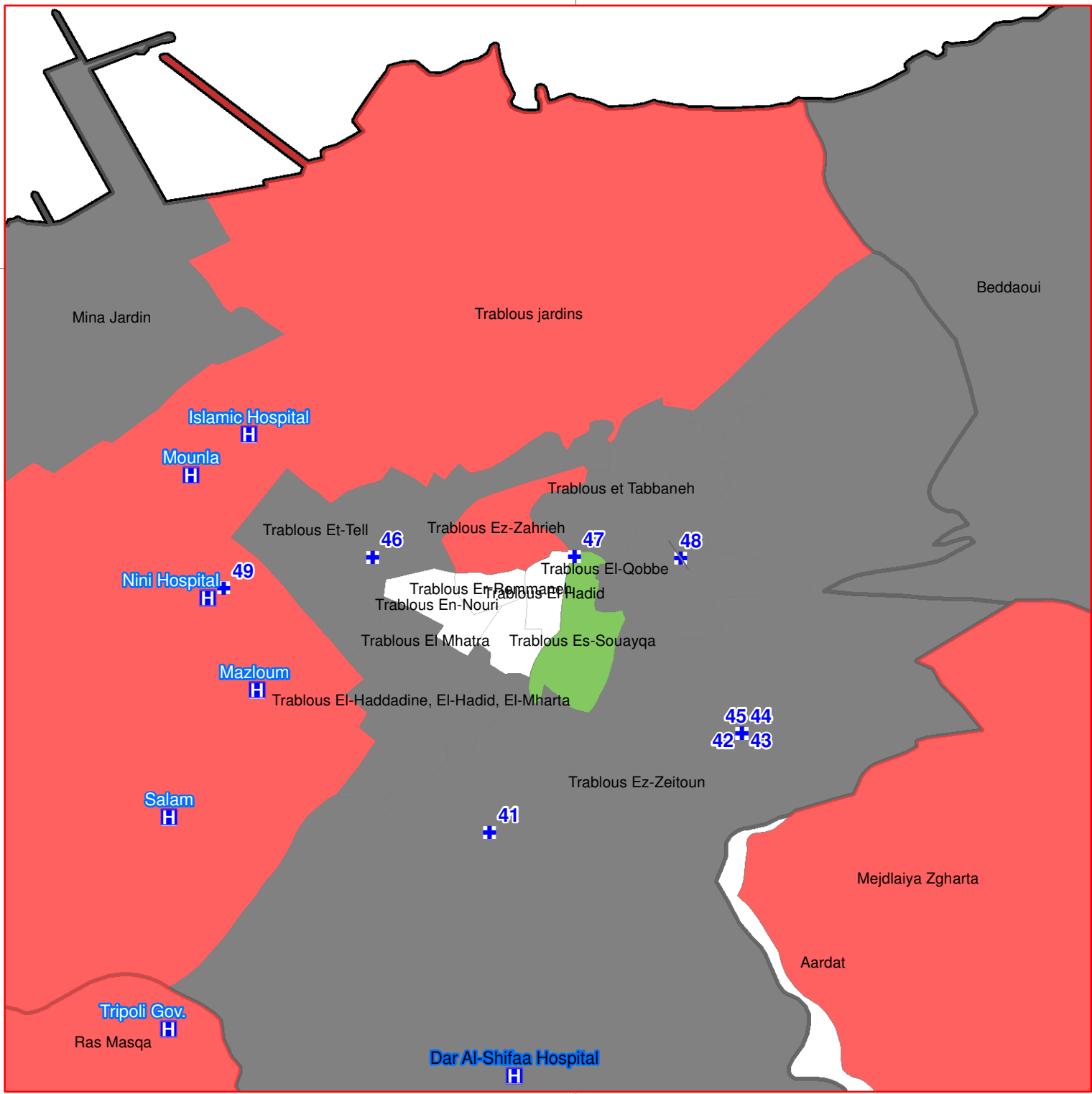
SYRIA REFUGEE RESPONSE

LEBANON North Governorate, Tripoli, Batroun, Bcharreh, El Koura, El Minieh-Dennieh, Zgharta Districts (T+5)

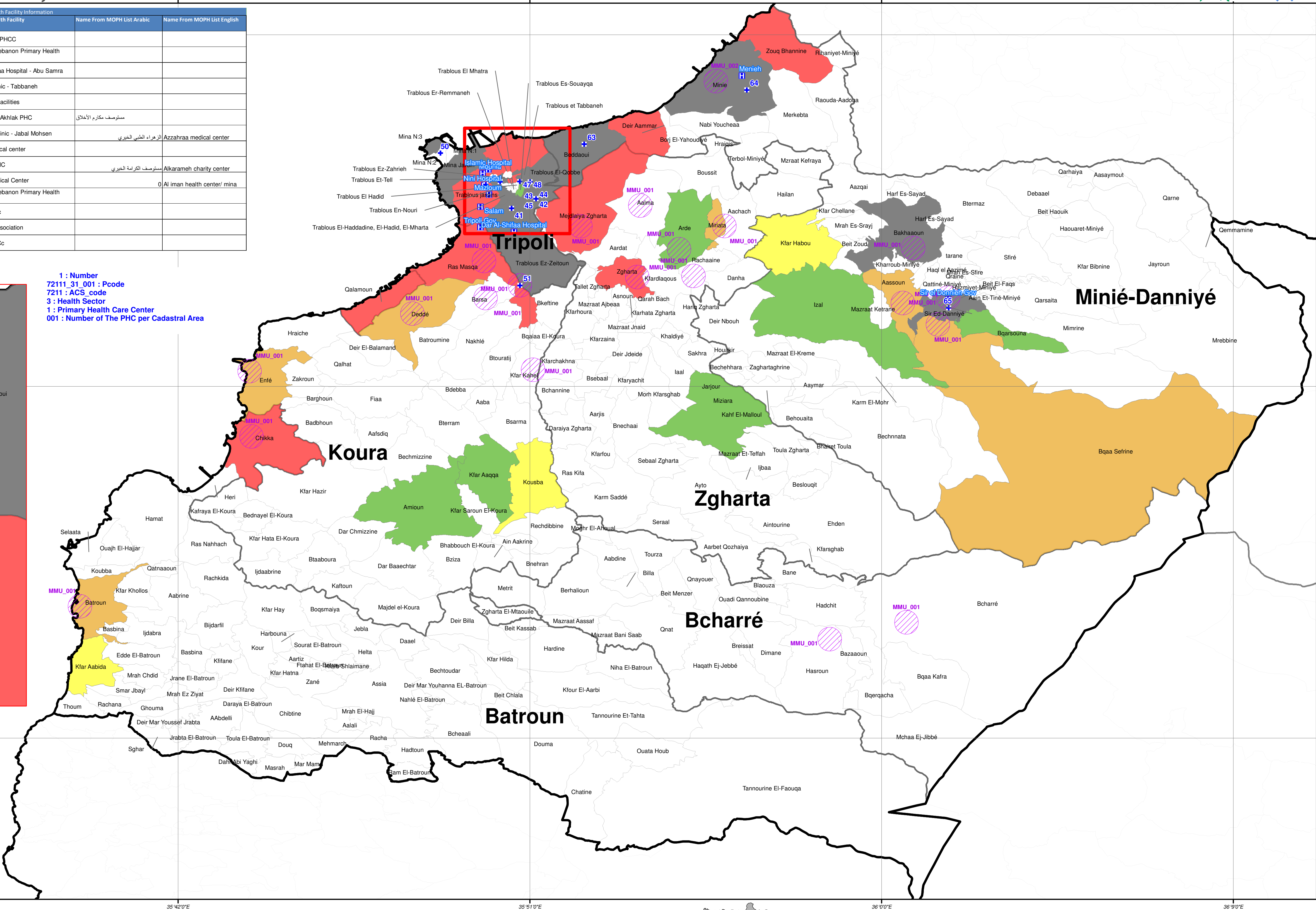
Distribution of Health Centers PHC,SHC and MMU in the Most Vulnerable Localities in Lebanon



Number		P_Code	Longitud_E	Latitude_N	ACS_CODE	Location	District	Cadastral Name	Village	Health Facility Information		
						Governorate				Name of Health Facility	Name From MOPH List Arabic	Name From MOPH List English
41	31111	31_001	35.84219	34.426014	31111	North	Tripoli	Trablous Ez-Zeitoun	Abou Samra	Al Bachaer PHCC		
42	31111	31_003	35.85263	34.4301188	31111	North	Tripoli	Trablous Ez-Zeitoun	Tripoli	CARITAS Lebanon Primary Health Care Center		
43	31111	31_004	35.85263	34.4301188	31111	North	Tripoli	Trablous Ez-Zeitoun	Tripoli	Dar El Zahraa Hospital - Abu Samra		
44	31111	31_005	35.85263	34.4301188	31111	North	Tripoli	Trablous Ez-Zeitoun	Tripoli	Al Dawa Clinic - Tabbaneh		
45	31111	31_006	35.85263	34.4301188	31111	North	Tripoli	Trablous Ez-Zeitoun	Trablous Ez-Zeitoun	Diagnostic Facilities		
46	31121	31_001	35.83735	34.437405	31121	North	Tripoli	Trablous Et-Tell	Trablous Et-Tell	Makarem Al Akhlaq PHC	مستوصف مكارم الاخلاق	
47	31141	31_001	35.8457	34.4374186	31141	North	Tripoli	Trablous Es-Souayqa	Tripoli	Al Zahraa Clinic - Jabal Mohsen	الزهراء الطبي الجوري	Azzahraa medical center
48	31151	31_001	35.8501	34.437361	31151	North	Tripoli	Trablous El-Qobbe	Qoubbe	Qobbe Medical center		
49	31166	31_001	35.83119	34.4361329	31166	North	Tripoli	Trablous jardins	Tripoli	Karameh PHC	مستوصف الكرامة العربي	Alkarameh charity center
50	31176	31_001	35.81185	34.4495586	31176	North	Tripoli	Mina N 2	El Mina	Al Iman Medical Center		Al Iman health center/ mina
51	32185	31_001	35.84579	34.39315	32185	North	El Koura	Ras Masqa	Dahr el Ain - Koura	CARITAS Lebanon Primary Health Care Center		
63	37231	31_001	35.87314	34.4533639	37231	North	El Minieh-Dennieh	Beddaoui	El Beddaoui	Nahda Clinic		
64	37271	31_001	35.94251	34.4764694	37271	North	El Minieh-Dennieh	Minie	El Minie	Al Nahda Association		
65	37311	31_001	36.02861	34.3836111	37311	North	El Minieh-Dennieh	Sir El-Danniyeh	Sir El-Danniyeh	Al Iman PHCc		



1 : Number
72111_31_001 : Pcode
7211 : ACS_code
3 : Health Sector
1 : Primary Health Care Center
001 : Number of The PHC per Cadastral Area



Legend

- Humanitarian Primary Health Care Centers (PHC)
- Secondary Health Care Centers
- One MMU per Town
- Two MMU per Town
- Three MMU per Town
- MMU_code, Organisation
 - MMU_001, IMC + Renee Mouawad Foundation
 - MMU_002, IMC + AL Nahda Association

36 / 242 Most Vulnerable Localities in Lebanon

- Most Vulnerable (48% SYR Refugees / 39% Leb Por)
- 2nd Most Vulnerable (18% SYR Refugees / 11% Leb Por)
- 3rd Most Vulnerable (9% SYR Refugees / 6% Leb Por)
- 4th Most Vulnerable (6% SYR Refugees / 5% Leb Por)
- 5th Most Vulnerable (4% SYR Refugees / 5% Leb Por)
- Governorate
- Caza

Notes
The boundaries, names and designations used on this map do not imply official endorsement of the United Nations. All data used are the best available at the time of map production.

Data Sources:
- Lebanese Border, Caza and Cadastral Boundaries: NPMPLT 2005.
- Geographic Projection WGS 1984

Calculation of the Most Vulnerable Localities was based on the following data sources:
1-Cadastral Boundary Shapefile which includes the 3rd admin level population distribution. The source of the shapefile is the CDR (Council for Development and reconstruction)
2-UNDP study of 2008. It states that 28.55% of the Lebanese population is estimated to be living under 4USD/capita/day based on data collected in 2004.
The poverty estimates from this study gives break down on "combined Caza" level (admin level 2), this is assumed to be same for all the municipalities under the caza boundaries.
3- The refugee population distribution. This data is frequently by UNHCR registration unit. The top quintile of the vulnerability mapping includes 36 from 242 localities
4- Health data: Ministry of Public Health-Lebanon, Health 3w Matrix

GIS and Mapping by UNHCR. For Information and updates contact Jad Ghosn: ghosn@unhcr.org
Maroun Sader: sader@unhcr.org
Map Production Date: 29 May 2014

