

SYRIA REFUGEE RESPONSE

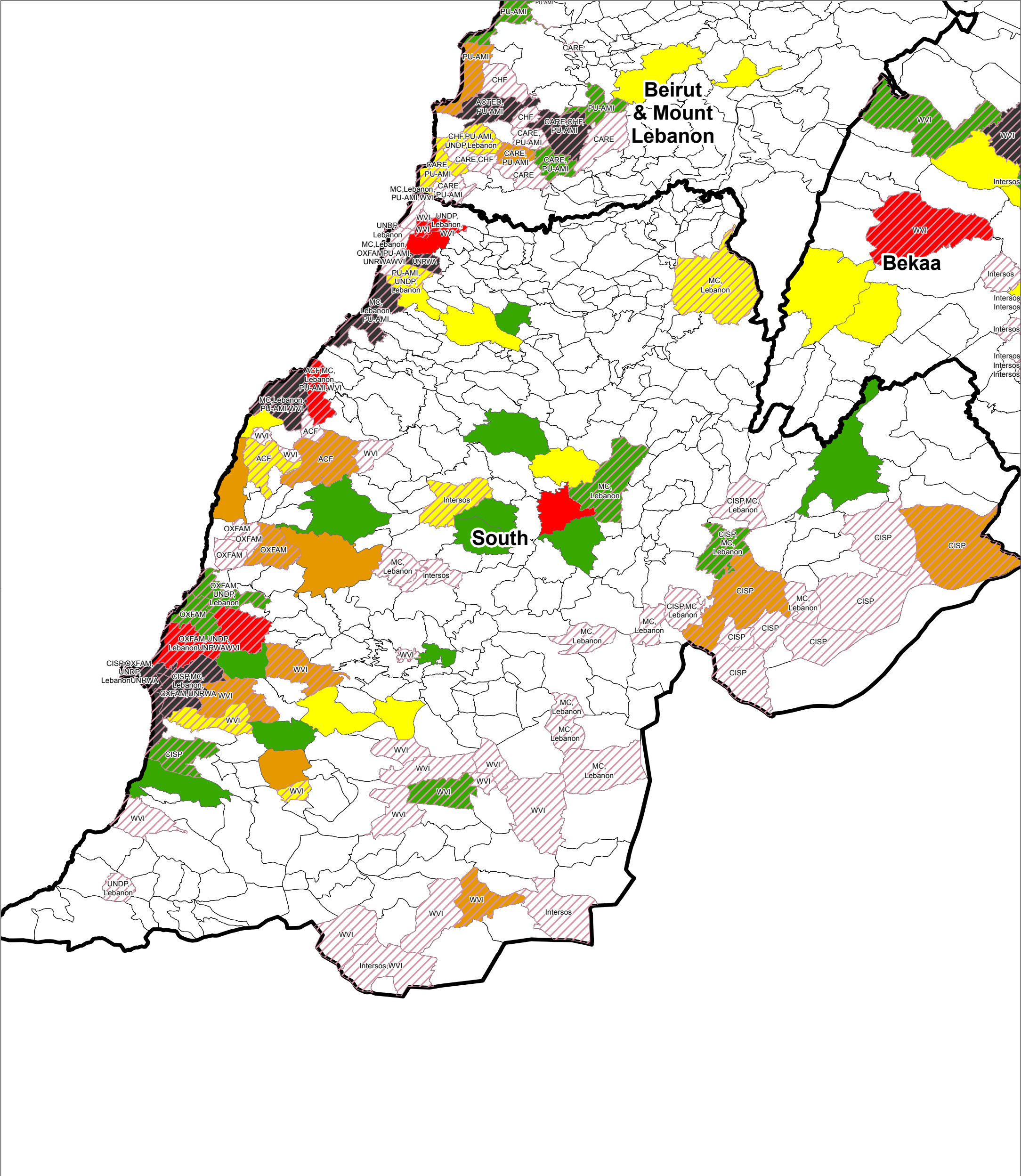
South

WASH Sector Working Group  
WASH Implementation Lebanon



WASH Sector Working Group  
GIS and Mapping by UNHCR and UNICEF  
For more information and updates contact  
William Lavell wlavell@unicef.org

Date: 5/28/2014



Hygiene

**Most Vulnerable**

**225 Most Vulnerable Localities**

- Most Vulnerable (50% Syr / 39% Leb)
- 2nd Most Vulnerable (17% Syr / 11% Leb)
- 3rd Most Vulnerable (9% Syr / 6% Leb)
- 4th Most Vulnerable (6% Syr / 5% Leb)
- 5th Most Vulnerable (4% Syr / 5% Leb)

N

0 1.5 3 6 9 12 Kilometers

Overview:  
This map shows WASH Activities based on reporting from ActivityInfo April data  
Data Sources:  
- The WASH Sector Data is based on Activity Info Reporting.  
All data used were the best available at the time of map production.  
The boundaries, names, and designations used on this map do not imply official endorsement or acceptance by the United Nations, UNICEF or UNHCR.  
WASH Activities:  
Activities shown are based on the indicators from ActivityInfo

For more information please contact  
William Lavell  
Wlavell@unicef.org