

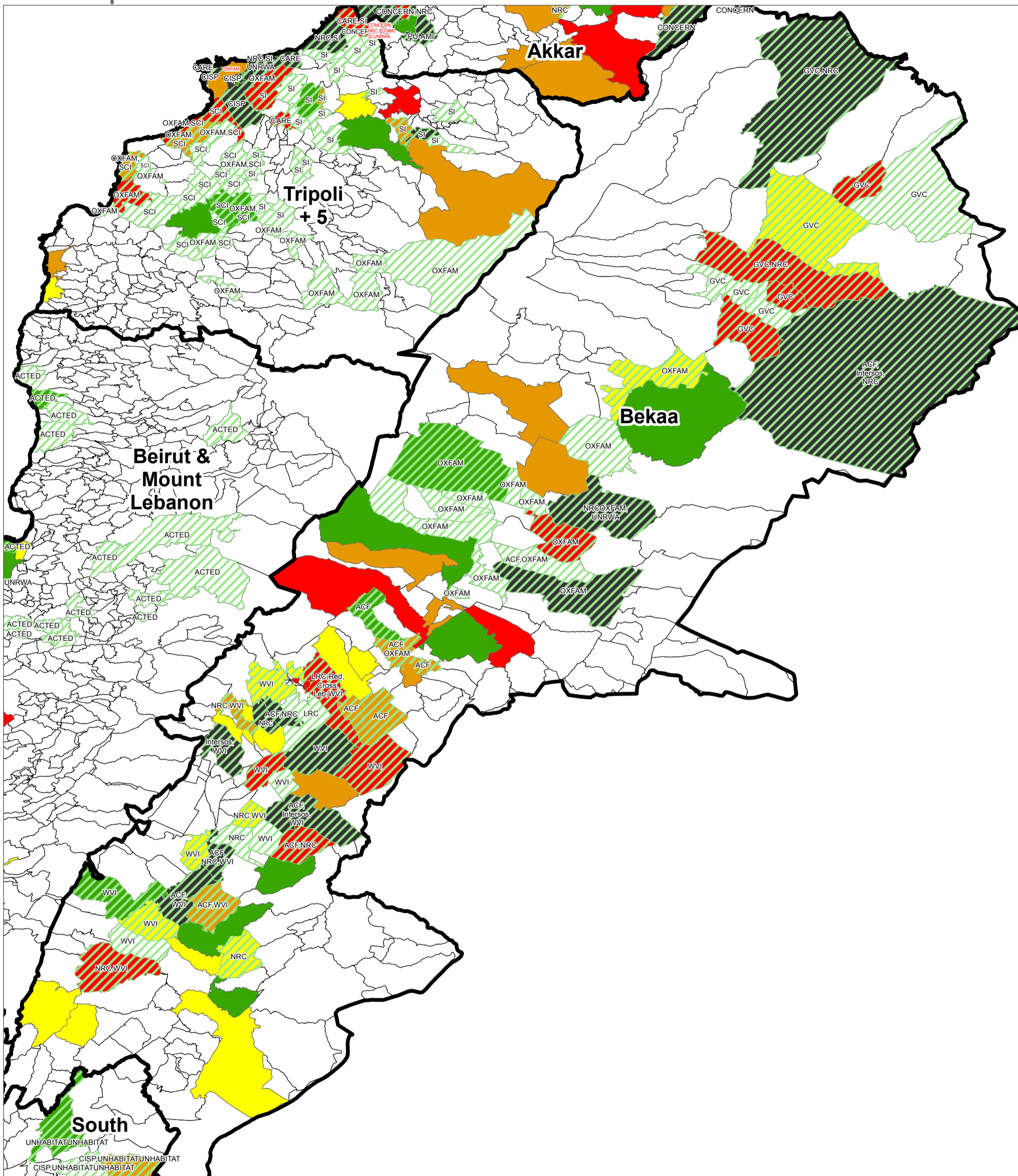
WASH Sector Working Group

WASH Implementation Lebanon



WASH Sector Working Group
GIS and Mapping by UNHCR and UNICEF
For more information and updates contact
William Lavell wlavell@unicef.org

Date: 5/28/2014



5th Most Vulnerable (4% Syr / 5% Leb)



A scale bar labeled "Kilometers" with markings at 0, 2.25, 4.5, 9, 13.5, and 18.

Activities shown are based on the indicators from ActivityInfo

For more information please contact
William Lavell
Wlavell@unicef.org